



# 050-708<sup>Q&As</sup>

SUSE Linux Enterprise Desktop 10 Administration

## Pass Novell 050-708 Exam with 100% Guarantee

Free Download Real Questions & Answers **PDF** and **VCE** file from:

<https://www.geekcert.com/050-708.html>

100% Passing Guarantee  
100% Money Back Assurance

Following Questions and Answers are all new published by Novell  
Official Exam Center

-  **Instant Download** After Purchase
-  **100% Money Back** Guarantee
-  **365 Days** Free Update
-  **800,000+** Satisfied Customers





### QUESTION 1

Shown below is results from the ls -l progress command:

```
-rw-rw-r-- 1 rtracy users 0 2007-02-07 15:30 progress
```

- Which statement is true?
- A. The group has read only rights to this file.
  - B. User rtracy has read only rights to this file.
  - C. User rtracy has read and write rights to this file.
  - D. All other users have read and write rights to this file.
  - E. All other users have read only rights to this directory
  - F. The group has read and write rights to this directory.

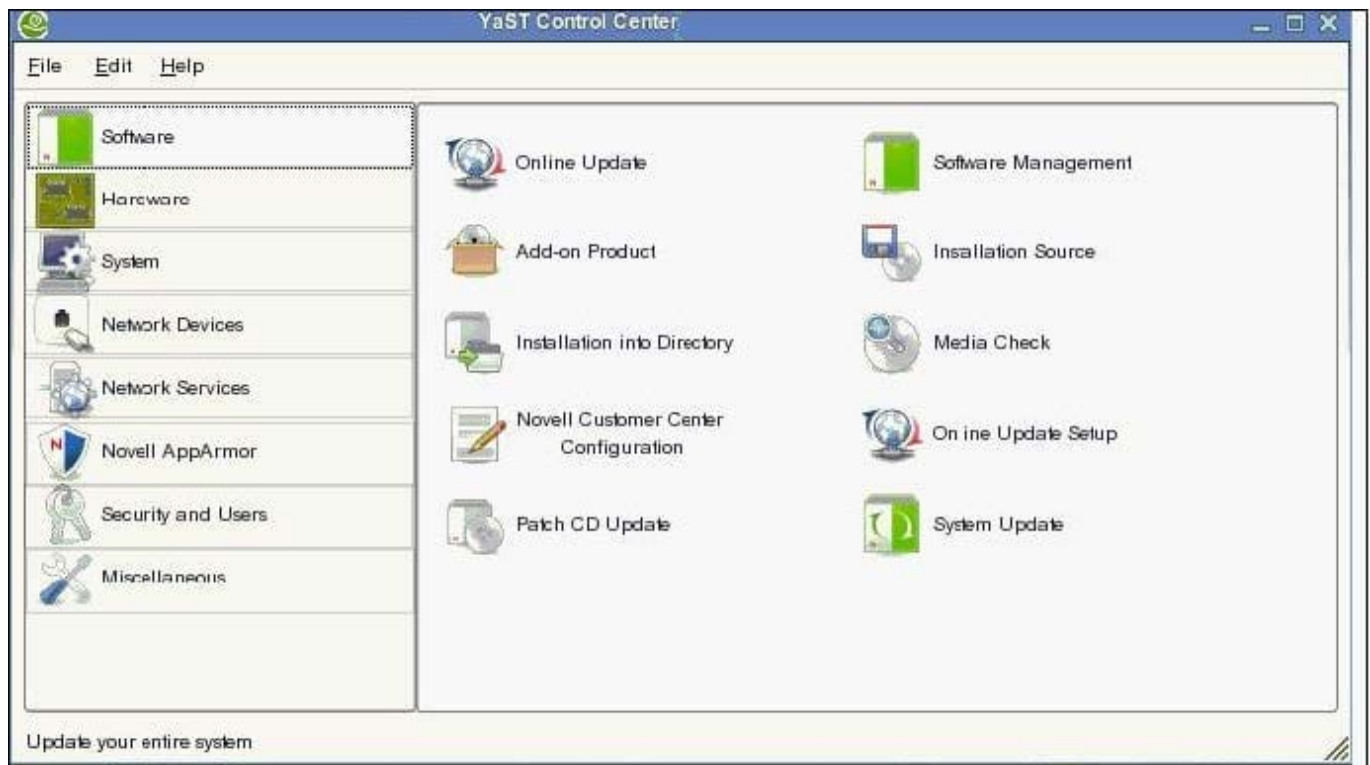
Correct Answer: C

### QUESTION 2

Click on the Point-and-Click button to begin.

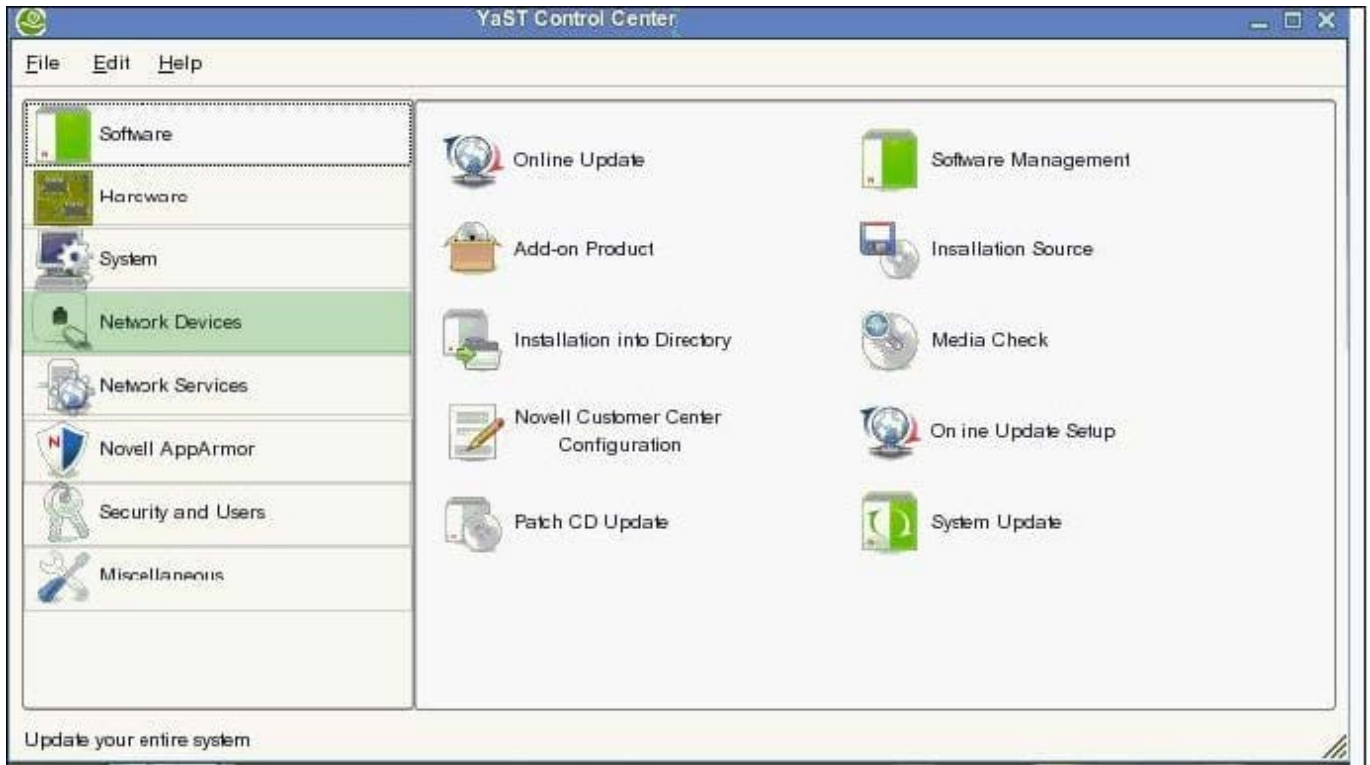
Click on the option or Icon that will allow you to gain access to NetworkManager.

Hot Area:





Correct Answer:



### QUESTION 3

In which directory are man pages located?

- A. /lib/share/man
- B. /bin/share/man
- C. /etc/share/man
- D. /usr/share/man
- E. /sys/share/man

Correct Answer: D

### QUESTION 4

Which command shows all processes on the system including username?

- A. ps afx
- B. ps alx



C. ps aux

D. ps ulx

E. ps ufx

Correct Answer: C

---

#### QUESTION 5

What is the syntax to uninstall a software package?

A. rpm -a package\_name

B. rpm -d package\_name

C. rpm -e package\_name

D. rpm -r package\_name

E. rpm -u package\_name

Correct Answer: C

[050-708 PDF Dumps](#)

[050-708 Study Guide](#)

[050-708 Exam Questions](#)