



# 100-101<sup>Q&As</sup>

CCNA Interconnecting Cisco Networking Devices 1 (ICND1)

## Pass Cisco 100-101 Exam with 100% Guarantee

Free Download Real Questions & Answers **PDF** and **VCE** file from:

<https://www.geekcert.com/100-101.html>

100% Passing Guarantee  
100% Money Back Assurance

Following Questions and Answers are all new published by Cisco  
Official Exam Center

-  **Instant Download** After Purchase
-  **100% Money Back** Guarantee
-  **365 Days** Free Update
-  **800,000+** Satisfied Customers





### QUESTION 1

Why do large OSPF networks use a hierarchical design? (Choose three.)

- A. to decrease latency by increasing bandwidth
- B. to reduce routing overhead
- C. to speed up convergence
- D. to confine network instability to single areas of the network
- E. to reduce the complexity of router configuration
- F. to lower costs by replacing routers with distribution layer switches

Correct Answer: BCD

OSPF implements a two-tier hierarchical routing model that uses a core or backbone tier known as area zero (0). Attached to that backbone via area border routers (ABRs) are a number of secondary tier areas.

The hierarchical approach is used to achieve the following:

Rapid convergence because of link and/or switch failures

Deterministic traffic recovery

Scalable and manageable routing hierarchy, reduced routing overhead.

---

### QUESTION 2



### Instructions



For both the Router and the Switch the simulated console mode needs to start and remain in enabled mode.

RouterA and SwitchA have been configured to operate in a private network which will connect to the Internet. You have been asked to review the configuration prior to cabling and implementation.

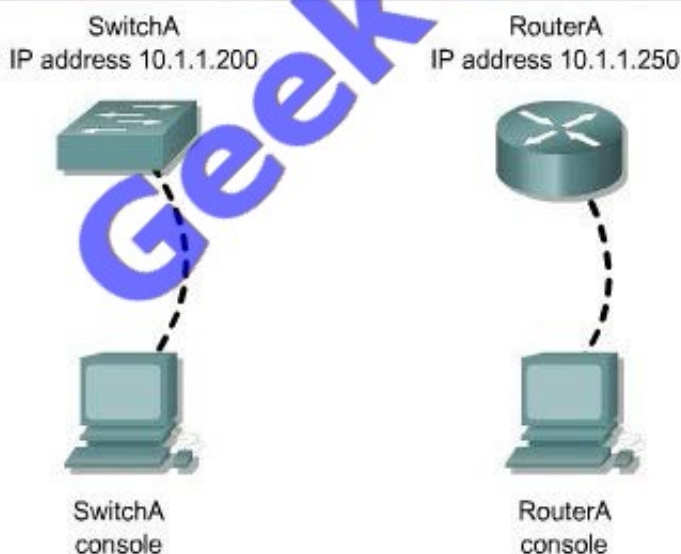
This task requires the use of various IOS commands to access and inspect the running configuration of RouterA and SwitchA. No configuration changes are necessary.

You will connect to RouterA and SwitchA via the console devices that are attached to each.

There are 4 multiple-choice questions with this task. Be sure to answer all of them before leaving this item. In order to score the maximum points you will need to have accessed both SwitchA and RouterA.

NOTE: The configuration command has been disabled for both the router and switch in this simulation.

### Topology



Select three options which are security issues with the current configuration of SwitchA. (Choose three.)

- A. Privilege mode is protected with an unencrypted password
- B. Inappropriate wording in banner message
- C. Virtual terminal lines are protected only by a password requirement
- D. Both the username and password are weak



- E. Telnet connections can be used to remotely manage the switch
- F. Cisco user will be granted privilege level 15 by default

Correct Answer: ABD

This answer can be done by simulation only, don't know user name password and banner message etc

---

### QUESTION 3

At which layer of the OSI model does the protocol that provides the information that is displayed by the show cdp neighbors command operate?

- A. application
- B. transport
- C. network
- D. physical
- E. data link

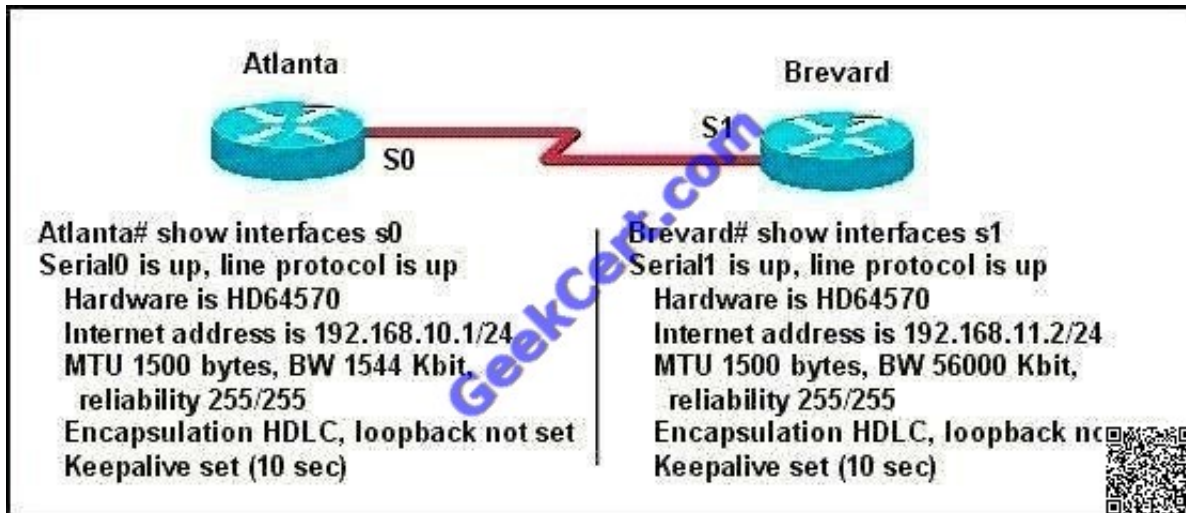
Correct Answer: E

<http://computernetworkingnotes.com/cisco-devices-administration-and-configuration/cisco-discoveryprotocol.html> CDP is a device discovery protocol that runs over Layer 2 (the data link layer) on all Cisco-manufactured devices (routers, bridges, access servers, and switches) and allows network management applications to discover Cisco devices that are neighbors of already known devices. With CDP, network management applications can learn the device type and the Simple Network Management Protocol (SNMP) agent address of neighboring devices running lower-layer, transparent protocols. CDP allows devices to share basic configuration information without even configuring any protocol-specific information and is enabled by default on all interfaces. CDP is a Datalink Protocol occurring at Layer 2 of the OSI model. CDP is not routable and can only go over to directly connected devices. CDP is enabled, by default, on all Cisco devices. CDP updates are generated as multicasts every 60 seconds with a hold-down period of 180 seconds for a missing neighbor. The no cdp run command globally disables CDP, while the no cdp enable command disables CDP on an interface. Use show cdp neighbors to list out your directly connected Cisco neighboring devices. Adding the detail parameter will display the layer-3 addressing configured on the neighbor.

---

### QUESTION 4

Two routers named Atlanta and Brevard are connected by their serial interfaces as shown in the exhibit, but there is no data connectivity between them. The Atlanta router is known to have a correct configuration.



Given the partial configurations shown in the exhibit, what is the problem on the Brevard router that is causing the lack of connectivity?

- A. A loopback is not set.
- B. The IP address is incorrect.
- C. The subnet mask is incorrect.
- D. The serial line encapsulations are incompatible.
- E. The maximum transmission unit (MTU) size is too large.
- F. The bandwidth setting is incompatible with the connected interface.

Correct Answer: B

#### QUESTION 5

**Instructions**

For both the Router and the Switch the simulated console mode needs to start and remain in enabled mode.

RouterA and SwitchA have been configured to operate in a private network which will connect to the Internet. You have been asked to review the configuration prior to cabling and implementation.

This task requires the use of various IOS commands to access and inspect the running configuration of RouterA and SwitchA. No configuration changes are necessary.

You will connect to RouterA and SwitchA via the console devices that are attached to each.

There are 4 multiple-choice questions with this task. Be sure to answer all of them before leaving this item. In order to score the maximum points you will need to have accessed both SwitchA and RouterA.

NOTE: The configuration command has been disabled for both the router and switch in this simulation.

**Topology**

SwitchA  
IP address 10.1.1.200



SwitchA  
console

RouterA  
IP address 10.1.1.250



RouterA  
console



Select two options which are security issues which need to be modified before RouterA is used? (Choose two.)

- A. unencrypted weak password is configured to protect privilege mode
- B. inappropriate wording in banner message
- C. the virtual terminal lines have a weak password configured
- D. virtual terminal lines have a password, but it will not be used



E. configuration supports un-secure web server access

Correct Answer: BD

This answer can be done by simulation only, don't know user name password and banner message etc

[Latest 100-101 Dumps](#)

[100-101 Study Guide](#)

[100-101 Exam Questions](#)



To Read the [Whole Q&As](#), please purchase the [Complete Version](#) from [Our website](#).

## Try our product !

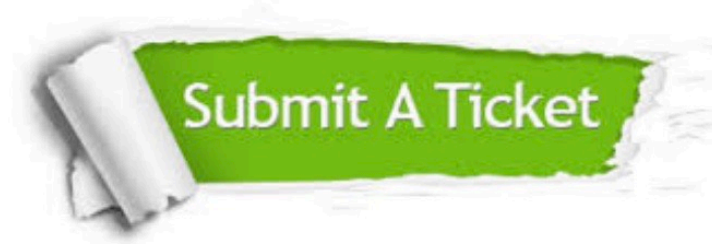
- 100% Guaranteed Success
- 100% Money Back Guarantee
- 365 Days Free Update
- Instant Download After Purchase
- 24x7 Customer Support
- Average 99.9% Success Rate
- More than 800,000 Satisfied Customers Worldwide
- Multi-Platform capabilities - [Windows](#), [Mac](#), [Android](#), [iPhone](#), [iPod](#), [iPad](#), [Kindle](#)

We provide exam PDF and VCE of Cisco, Microsoft, IBM, CompTIA, Oracle and other IT Certifications. You can view Vendor list of All Certification Exams offered:

<https://www.geekcert.com/allproducts>

## Need Help

Please provide as much detail as possible so we can best assist you.  
To update a previously submitted ticket:



 <p><b>One Year Free Update</b> Free update is available within One Year after your purchase. After One Year, you will get 50% discounts for updating. And we are proud to boast a 24/7 efficient Customer Support system via Email.</p>	 <p><b>Money Back Guarantee</b> To ensure that you are spending on quality products, we provide 100% money back guarantee for 30 days from the date of purchase.</p>	 <p><b>Security &amp; Privacy</b> We respect customer privacy. We use McAfee's security service to provide you with utmost security for your personal information &amp; peace of mind.</p>
---	---	--

Any charges made through this site will appear as Global Simulators Limited.  
All trademarks are the property of their respective owners.  
Copyright © geekcert, All Rights Reserved.