



100-101^{Q&As}

CCNA Interconnecting Cisco Networking Devices 1 (ICND1)

Pass Cisco 100-101 Exam with 100% Guarantee

Free Download Real Questions & Answers **PDF** and **VCE** file from:

<https://www.geekcert.com/100-101.html>

100% Passing Guarantee
100% Money Back Assurance

Following Questions and Answers are all new published by Cisco
Official Exam Center

-  **Instant Download** After Purchase
-  **100% Money Back** Guarantee
-  **365 Days** Free Update
-  **800,000+** Satisfied Customers





QUESTION 1

How can you ensure that only the MAC address of a server is allowed by switch port Fa0/1?

- A. Configure port Fa0/1 to accept connections only from the static IP address of the server.
- B. Configure the server MAC address as a static entry of port security.
- C. Use a proprietary connector type on Fa0/1 that is incompatible with other host connectors.
- D. Bind the IP address of the server to its MAC address on the switch to prevent other hosts from spoofing the server IP address.

Correct Answer: B

When the MAC address is configured as static entry, no other address is allowed.

QUESTION 2

The following commands are entered on the router:

```
Burbank(config)# enable secret fortress Burbank(config)# line con 0 Burbank(config-line)# login Burbank(config-line)# password n0way1n Burbank(config-line)# exit Burbank(config)# service password-encryption
```

What is the purpose of the last command entered?

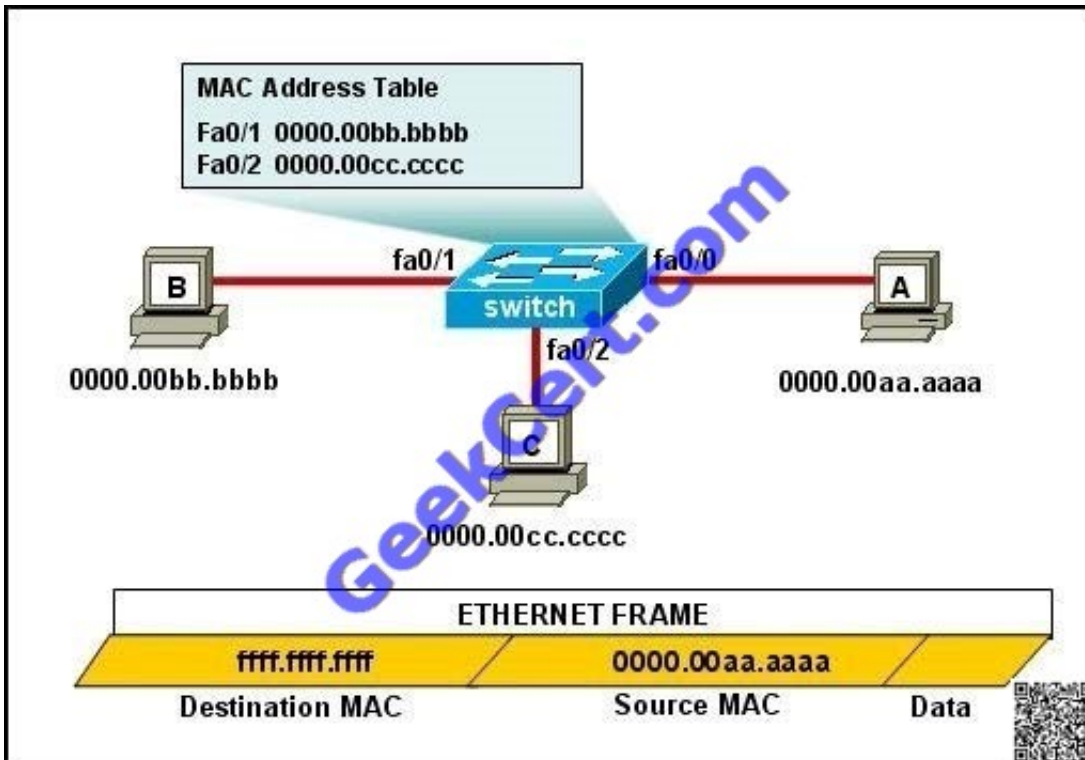
- A. to require the user to enter an encrypted password during the login process
- B. to prevent the vty, console, and enable passwords from being displayed in plain text in the configuration files
- C. to encrypt the enable secret password
- D. to provide login encryption services between hosts attached to the router

Correct Answer: B

Certain types of passwords, such as Line passwords, by default appear in clear text in the configuration file. You can use the service password-encryption command to make them more secure. Once this command is entered, each password configured is automatically encrypted and thus rendered illegible inside the configuration file (much as the Enable/Enable Secret passwords are). Securing Line passwords is doubly important in networks on which TFTP servers are used, because TFTP backup entails routinely moving config files across networks--and config files, of course, contain Line passwords.

QUESTION 3

Refer to the exhibit.



The MAC address table is shown in its entirety. The Ethernet frame that is shown arrives at the switch. What two operations will the switch perform when it receives this frame? (Choose two.)

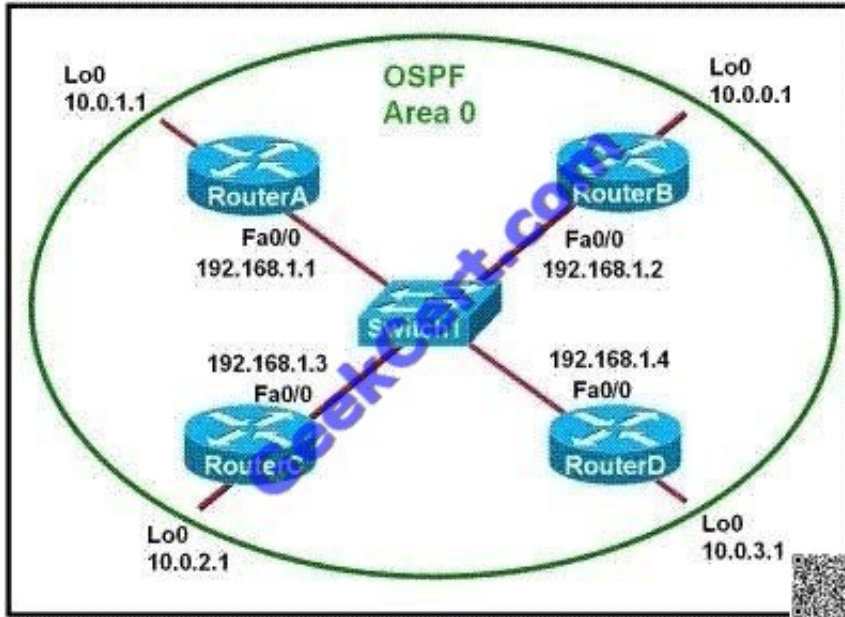
- A. The switch will not forward a frame with this destination MAC address.
- B. The MAC address of 0000.00aa.aaaa will be added to the MAC Address Table.
- C. The MAC address of fff.fff.fff will be added to the MAC address table.
- D. The frame will be forwarded out all active switch ports except for port fa0/0.
- E. The frame will be forwarded out fa0/0 and fa0/1 only.
- F. The frame will be forwarded out all the ports on the switch.

Correct Answer: BD

If the switch already has the MAC address in its table for the destination, it will forward the frame directly to the destination port. If it was not already in its MAC table, then they frame would have been flooded out all ports except for the port that it came from.

QUESTION 4

Refer to the exhibit.



Which two statements are true about the loopback address that is configured on RouterB? (Choose two.)

- A. It ensures that data will be forwarded by RouterB.
- B. It provides stability for the OSPF process on RouterB.
- C. It specifies that the router ID for RouterB should be 10.0.0.1.
- D. It decreases the metric for routes that are advertised from RouterB.
- E. It indicates that RouterB should be elected the DR for the LAN.

Correct Answer: BC

A loopback interface never comes down even if the link is broken so it provides stability for the OSPF process (for example we use that loopback interface as the router-id) - The router-ID is chosen in the order below:

+ The highest IP address assigned to a loopback (logical) interface. + If a loopback interface is not defined, the highest IP address of all active router's physical interfaces will be chosen. -> The loopback interface will be chosen as the router ID of RouterB

QUESTION 5



Instructions



For both the Router and the Switch the simulated console mode needs to start and remain in enabled mode.

RouterA and SwitchA have been configured to operate in a private network which will connect to the Internet. You have been asked to review the configuration prior to cabling and implementation.

This task requires the use of various IOS commands to access and inspect the running configuration of RouterA and SwitchA. No configuration changes are necessary.

You will connect to RouterA and SwitchA via the console devices that are attached to each.

There are 4 multiple-choice questions with this task. Be sure to answer all of them before leaving this item. In order to score the maximum points you will need to have accessed both SwitchA and RouterA.

NOTE: The configuration command has been disabled for both the router and switch in this simulation.

Topology



Select two options which are security issues which need to be modified before RouterA is used? (Choose two.)

- A. unencrypted weak password is configured to protect privilege mode
- B. inappropriate wording in banner message
- C. the virtual terminal lines have a weak password configured
- D. virtual terminal lines have a password, but it will not be used



E. configuration supports un-secure web server access

Correct Answer: BD

This answer can be done by simulation only, don't know user name password and banner message etc

[100-101 Practice Test](#)

[100-101 Study Guide](#)

[100-101 Braindumps](#)



To Read the [Whole Q&As](#), please purchase the [Complete Version](#) from [Our website](#).

Try our product !

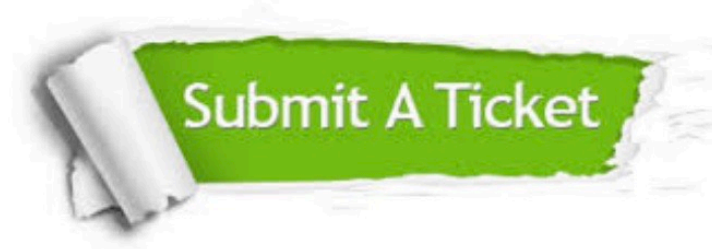
- 100% Guaranteed Success
- 100% Money Back Guarantee
- 365 Days Free Update
- Instant Download After Purchase
- 24x7 Customer Support
- Average 99.9% Success Rate
- More than 800,000 Satisfied Customers Worldwide
- Multi-Platform capabilities - [Windows](#), [Mac](#), [Android](#), [iPhone](#), [iPod](#), [iPad](#), [Kindle](#)

We provide exam PDF and VCE of Cisco, Microsoft, IBM, CompTIA, Oracle and other IT Certifications. You can view Vendor list of All Certification Exams offered:

<https://www.geekcert.com/allproducts>

Need Help

Please provide as much detail as possible so we can best assist you.
To update a previously submitted ticket:



 <p>One Year Free Update Free update is available within One Year after your purchase. After One Year, you will get 50% discounts for updating. And we are proud to boast a 24/7 efficient Customer Support system via Email.</p>	 <p>Money Back Guarantee To ensure that you are spending on quality products, we provide 100% money back guarantee for 30 days from the date of purchase.</p>	 <p>Security & Privacy We respect customer privacy. We use McAfee's security service to provide you with utmost security for your personal information & peace of mind.</p>
---	---	--

Any charges made through this site will appear as Global Simulators Limited.
All trademarks are the property of their respective owners.
Copyright © geekcert, All Rights Reserved.