



# 100-105<sup>Q&As</sup>

Interconnecting Cisco Networking Devices Part 1 (ICND1)

## Pass Cisco 100-105 Exam with 100% Guarantee

Free Download Real Questions & Answers **PDF** and **VCE** file from:

<https://www.geekcert.com/100-105.html>

100% Passing Guarantee  
100% Money Back Assurance

Following Questions and Answers are all new published by Cisco  
Official Exam Center

-  **Instant Download** After Purchase
-  **100% Money Back** Guarantee
-  **365 Days** Free Update
-  **800,000+** Satisfied Customers





### QUESTION 1

Click on the correct location or locations in the exhibit.

This task requires the use of various **show** commands from the CLI of Router1 to answer 5 multiple-choice questions. This does **not** require any configuration.

**NOTE: The show running-configuration and the show startup-configuration commands have been disabled in this simulation.**

To access the multiple-choice questions, click on the numbered boxes on the right of the top panel.

There are 5 multiple-choice questions with this task. Be sure to answer all 5 questions before leaving this item.

eSim Professional v1.0.1.9

00:00:58



What is the subnet broadcast address of the LAN connected to Router1?

- A. 192.168.200.15
- B. 192.168.200.31
- C. 192.168.200.63



D. 192.168.200.127

E. 255.255.255.255

Correct Answer: B

User the "show ip interface brief" command User the "show interface fa0/1" command

```
CiscoTerminal

Press RETURN to get started.

Router1>en
Router1#show ip int brief
Interface          IP-Address      OK? Method Status        Protocol
FastEthernet0/0    unassigned      YES unset    administratively down  down
FastEthernet0/1    192.168.200.23 YES manual    up            up
Serial0/0          10.11.12.13    YES manual    administratively down  down
Serial0/1          unassigned      YES unset    administratively down  down
Router1#_
```



```
CiscoTerminal
Router1#show int fa0/1
FastEthernet0/1 is Up, line protocol is Up
  Hardware is Lance, address is 0010.7b81.4e2d(bia 0010.7b81.4e2d)
  Internet address is 192.168.200.23/28
  MTU 1500 bytes, BW 100000 Kbit, DLY 100 usec,
    reliability 255/255, txload 1/255, rxload 1/255
  Encapsulation ARPA, loopback not set
  Keepalive set (10 sec)
  Full-duplex, 100Mb/s, 100BaseTX/FX
  ARP type: ARPA, ARP Timeout 04:00:00
  Last input 00:00:27, output 00:00:02, output hang never
  Last clearing of "show interface" counters never
  Queueing strategy: fifo
  output queue 0/40, 0 drops : input queue 0/75, 0 drops
  5 minute input rate 0 bits/sec, 0 packets/sec
  5 minute output rate 0 bits/sec, 0 packets/sec
    3581 packets input, 120219 bytes, 0 no buffer
    Received 3581 broadcasts, 0 runts, 0 giants, 0 throttles
    0 input errors, 0 CRC, 0 frame, 0 overrun, 0 ignored, 0 abort
    0 input packets with dribble condition detected
    24213 packets output, 2101260 bytes, 0 underruns
    0 output errors, 0 collisions, 12 interface resets
    0 babbles, 0 late collision, 0 deferred
--More--
```

From the output we learn that the ip address of the FastEthernet0/1 interface of Router1 is 192.168.200.23 and the subnet mask is /28. -> The broadcast address of this subnetwork is 192.168.200.31

## QUESTION 2



**Instructions**

You can click on the grey buttons below to view the different windows.

Each of the windows can be minimized by clicking on the [-]. You can also reposition a window by dragging it by the title bar.

The "Tab" key and most commands that use the "Control" or "Escape" keys are not supported and are not necessary to complete this simulation.

---

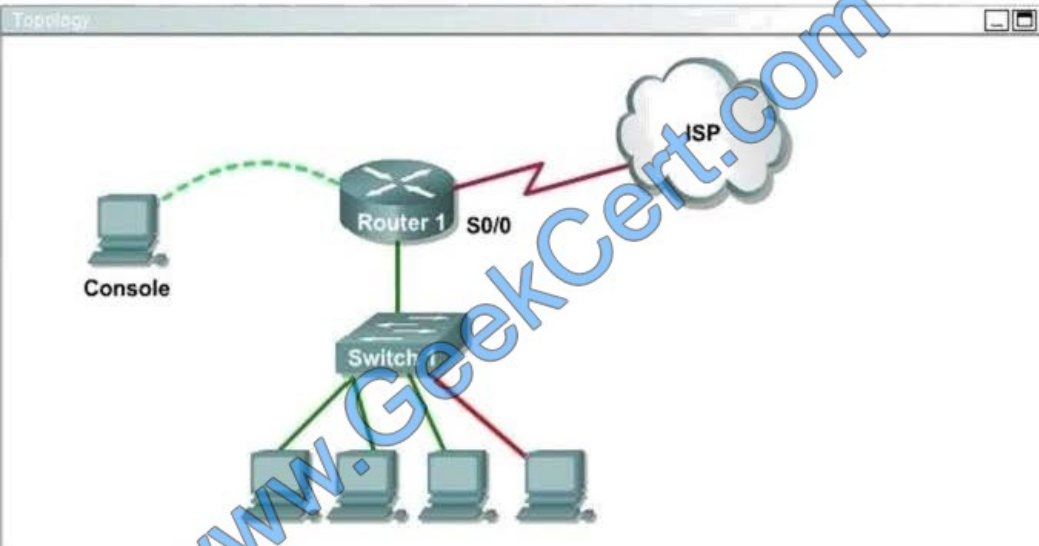
**Scenario**

This task requires the use of various **show** commands from the CLI of Router1 to answer four multiple-choice questions. This task does **not** require any configuration.

**NOTE:** The show running-configuration and the show startup-configuration commands have been disabled in this simulation.

To access the multiple-choice questions, click on the numbered boxes on the right of the top panel.

There are 4 multiple-choice questions with this task. Be sure to answer all 4 questions before leaving this item.



**R1**

```
Press RETURN to get started!  
Router1>
```





What is the subnet broadcast address of the LAN connected to Router1?

- A. 192.168.8.15
- B. 192.168.8.31
- C. 192.168.8.63
- D. 192.168.8.127

Correct Answer: A

```
CiscoTerminal
Press RETURN to get started.

Router1>en
Router1#show ip int brief
Interface          IP-Address      OK? Method Status        Protocol
FastEthernet0/0    unassigned      YES unset      administratively down down
FastEthernet0/1    192.168.200.23 YES manual    up            up
Serial0/0          10.11.12.13     YES manual    administratively down down
Serial0/1          unassigned      YES unset      administratively down down
Router1#_
```

User the "show interface fa0/1" command



```
CiscoTerminal
Router1#show int fa0/1
FastEthernet0/1 is Up, line protocol is Up
  Hardware is Lance, address is 0010.7b81.4e2d(bia 0010.7b81.4e2d)
  Internet address is 192.168.200.23/28
  MTU 1500 bytes, BW 100000 Kbit, DLY 100 usec,
    reliability 255/255, txload 1/255, rxload 1/255
  Encapsulation ARPA, loopback not set
  Keepalive set (10 sec)
  Full-duplex, 100Mb/s, 100BaseTX/FX
  ARP type: ARPA, ARP Timeout 04:00:00
  Last input 00:00:27, output 00:00:02, output hang never
  Last clearing of "show interface" counters never
  Queuing strategy: fifo
  output queue 0/40, 0 drops : input queue 0/75, 0 drops
  5 minute input rate 0 bits/sec, 0 packets/sec
  5 minute output rate 0 bits/sec, 0 packets/sec
  3581 packets input, 120219 bytes, 0 no buffer
  Received 3581 broadcasts, 0 runts, 0 giants, 0 throttles
  0 input errors, 0 CRC, 0 frame, 0 overrun, 0 ignored, 0 abort
  0 input packets with dribble condition detected
  24213 packets output, 2101260 bytes, 0 underruns
  0 output errors, 0 collisions, 12 interface resets
  0 babbles, 0 late collision, 0 deferred
--More--
```

### QUESTION 3

Drag and Drop Question

Drag and drop the MAC address types from the left onto the correct descriptions on the right?

Select and Place:

#### Answer Area

dynamic secure MAC address	cleared from the CAM table when the switch reboots
nonsecure MAC address	configured with the switchport port-secure mac-address command
static secure MAC address	dynamically learned addresses that can be retained permanently
sticky MAC address	requires access VLAN configuration only

Correct Answer:



**Answer Area**

	<b>nonsecure MAC address</b>
	<b>sticky MAC address</b>
	<b>dynamic secure MAC address</b>
	<b>static secure MAC address</b>

**QUESTION 4**

Which type of network topology requires each network node to be connected to one another?

- A. Ring
- B. Star
- C. Mesh
- D. Bus

Correct Answer: C

**QUESTION 5**

Refer to the exhibit. A network technician is unable to ping from R1 to R2. Using the output of the show interfaces serial0/1 command, what should the administrator do to correct the problem?





```
R1#show interfaces serial0/1
Serial0/1 is down, line protocol is down
Hardware is HD64570
Internet address is 192.1.1.5/30
<output omitted>

R2#show interfaces serial0/1
Serial0/1 is administratively down, line protocol is down
Hardware is HD64570
Internet address is 192.1.1.6/30
<output omitted>
```

The diagram illustrates a network setup with two routers, R1 and R2, connected via their Serial0/1 interfaces. R1 is labeled as DCE (Data Communications Equipment) and R2 is labeled as DTE (Data Terminal Equipment). The connection is shown as a vertical line between the two routers, with the labels 'S0/1 DCE' on the R1 side and 'DTE S0/1' on the R2 side.

- A. Replace the serial cable between R1 and R2.
- B. Reseat the serial connectors on the R1 and R2 routers.
- C. Configure the serial0/1 interface on R2 with the no shutdown command.
- D. Configure the serial0/1 interface on R1 with the clock rate 56000 command.
- E. Configure the serial0/1 interface on R1 with the ip address 192.1.1.7 255.255.255.252 command.

Correct Answer: C

[Latest 100-105 Dumps](#)

[100-105 PDF Dumps](#)

[100-105 Study Guide](#)



To Read the [Whole Q&As](#), please purchase the [Complete Version](#) from [Our website](#).

## Try our product !

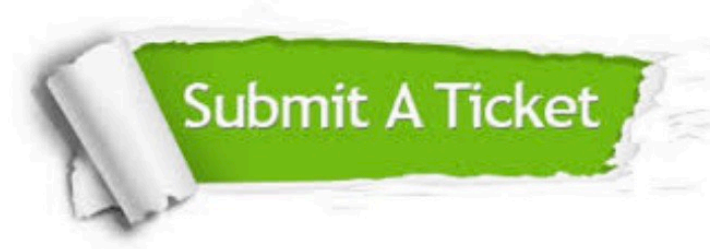
- 100% Guaranteed Success
- 100% Money Back Guarantee
- 365 Days Free Update
- Instant Download After Purchase
- 24x7 Customer Support
- Average 99.9% Success Rate
- More than 800,000 Satisfied Customers Worldwide
- Multi-Platform capabilities - [Windows](#), [Mac](#), [Android](#), [iPhone](#), [iPod](#), [iPad](#), [Kindle](#)

We provide exam PDF and VCE of Cisco, Microsoft, IBM, CompTIA, Oracle and other IT Certifications. You can view Vendor list of All Certification Exams offered:

<https://www.geekcert.com/allproducts>

## Need Help

Please provide as much detail as possible so we can best assist you.  
To update a previously submitted ticket:



 <p><b>One Year Free Update</b> Free update is available within One Year after your purchase. After One Year, you will get 50% discounts for updating. And we are proud to boast a 24/7 efficient Customer Support system via Email.</p>	 <p><b>Money Back Guarantee</b> To ensure that you are spending on quality products, we provide 100% money back guarantee for 30 days from the date of purchase.</p>	 <p><b>Security &amp; Privacy</b> We respect customer privacy. We use McAfee's security service to provide you with utmost security for your personal information &amp; peace of mind.</p>
---	---	--

Any charges made through this site will appear as Global Simulators Limited.  
All trademarks are the property of their respective owners.  
Copyright © geekcert, All Rights Reserved.