



101-01^{Q&As}

Riverbed Certified Solutions Associate

Pass Riverbed 101-01 Exam with 100% Guarantee

Free Download Real Questions & Answers **PDF** and **VCE** file from:

<https://www.geekcert.com/101-01.html>

100% Passing Guarantee
100% Money Back Assurance

Following Questions and Answers are all new published by Riverbed
Official Exam Center

-  **Instant Download** After Purchase
-  **100% Money Back** Guarantee
-  **365 Days** Free Update
-  **800,000+** Satisfied Customers





QUESTION 1

What licenses are installed with a Steelhead appliance when purchased? (Select 3)

- A. Scalable Data Referencing (SDR)
- B. Windows File Servers
- C. SSL
- D. Sybase database applications
- E. Microsoft Exchange

Correct Answer: ABE

QUESTION 2

A Steelhead appliance can continue to optimize traffic in which of the following status states? (Select 2)

- A. Healthy
- B. Normal
- C. Critical
- D. Degraded
- E. Failed

Correct Answer: AD

QUESTION 3

Which of the following correctly describe the two topology deployment modes of SteelHead SaaS? (Select two.)

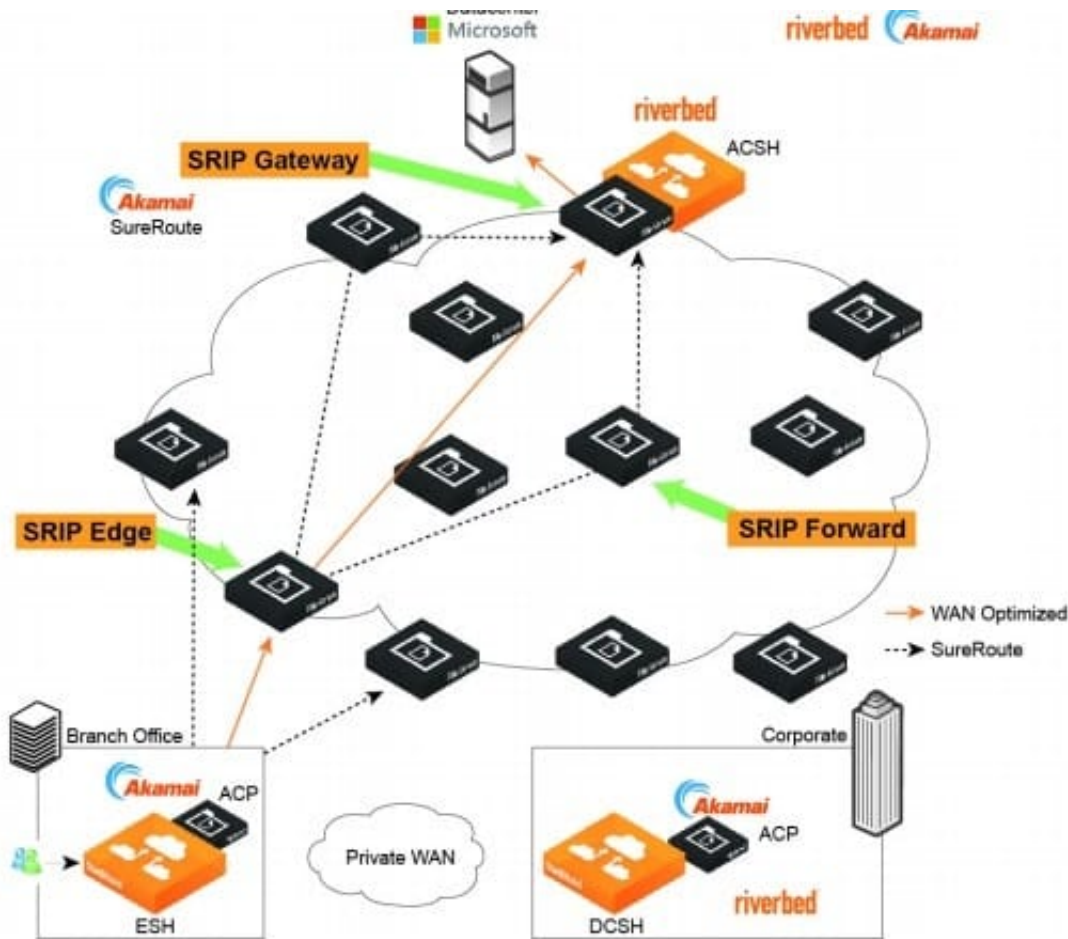
- A. In direct mode, the cloud optimized traffic is encapsulated at the branch-side SteelHead appliance.
- B. Direct mode cannot be used if the internet traffic exit points is centralized at the customer data center and not available from the branch.
- C. In backhaul mode the cloud-optimized traffic is encapsulated at the data center but the SSL optimization starts at the branch.
- D. Backhaul mode allows to optimize traffic to the cloud from the data center without the need of a branch SteelHead.

Correct Answer: AC

A: In direct mode, the ESH appliance encapsulates the traffic and sends it directly to a server in the Akamai (Branch Office xample) network. Akamai SureRoute optimization technology ensures that the traffic is forwarded through the Akamai network along the fastest path toward its destination at the data center hosting the SaaS application.

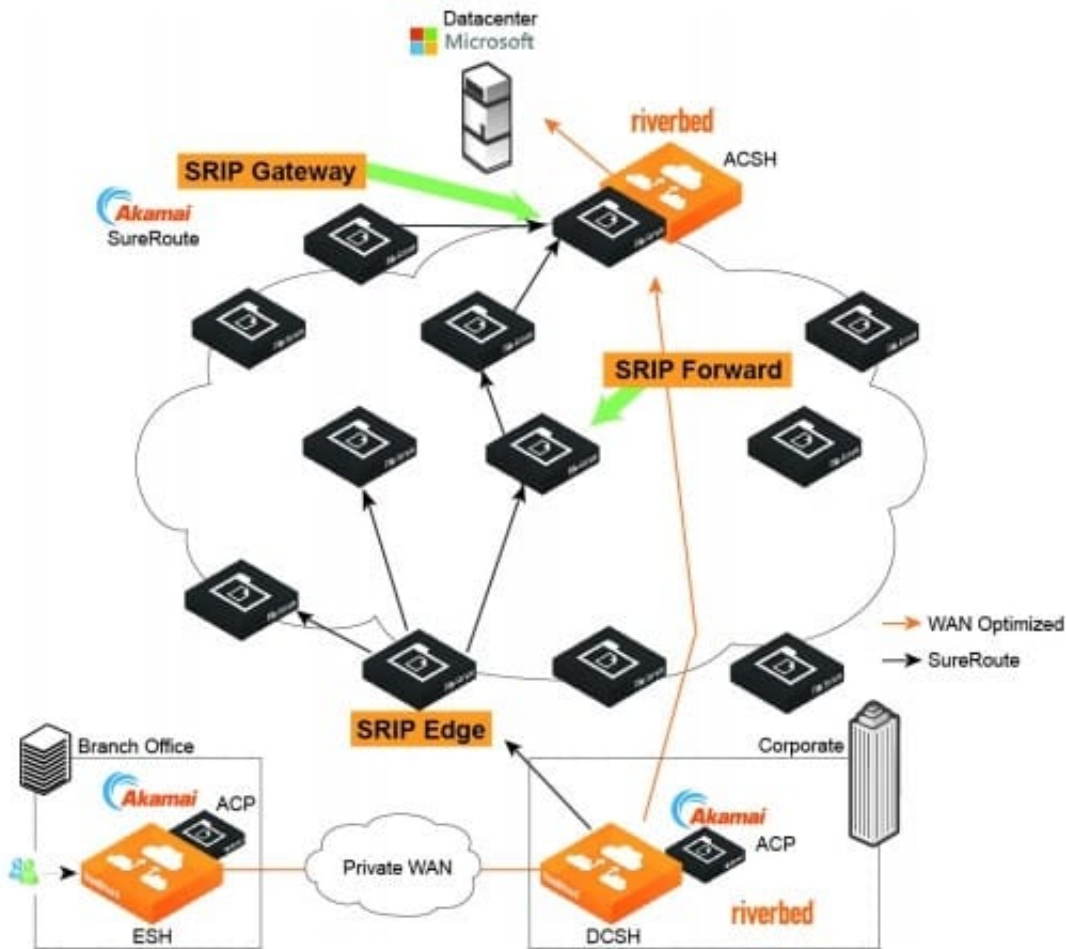


Figure: Example of Direct Branch Internet Deployment C: Back-hauled Internet Deployment In this topology, the branch does not have its own connection to the Internet. All traffic directed to the Internet is back-hauled over a private WAN or VPN to the organization's data center.



Although the DCSH encapsulates the traffic, it plays no role in the SSL optimization process. SSL optimization still takes place between the ESH appliance and the ACSH. Ensure that you establish the SSL peering trust between them.

Figure: Example of Back-hauled Internet Deployment References: SteelHeadSaaS User's Guide, RiOS Version 9.1, July 2015, pages 8-9



QUESTION 4

The Steelhead Mobile client software builds an optimized connection to what end device?

- A. The nearest SMC
- B. A Steelhead appliance
- C. A Central Management Console (CMC)
- D. The VPN concentrator
- E. Another Steelhead Mobile client

Correct Answer: B

QUESTION 5

With RiOS v9.0 and later, what does a topology consist of? (Choose three.)

- A. Uplinks



B. Networks

C. Services

D. Applications

E. Sites

Correct Answer: ABE

The topology consists of the network, the sites, and the uplinks to the network for the sites.

References: Riverbed Command-Line Interface, Reference Manual, April 2015 (page 453) <https://support.riverbed.com/bin/support/download?did=okk799647eeafskshi2utcul45>

[101-01 VCE Dumps](#)

[101-01 Practice Test](#)

[101-01 Study Guide](#)