



# 156-115.77<sup>Q&As</sup>

Check Point Certified Security Master

## Pass CheckPoint 156-115.77 Exam with 100% Guarantee

Free Download Real Questions & Answers **PDF** and **VCE** file from:

<https://www.geekcert.com/156-115-77.html>

100% Passing Guarantee  
100% Money Back Assurance

Following Questions and Answers are all new published by CheckPoint Official Exam Center

- ⚙️ **Instant Download** After Purchase
- ⚙️ **100% Money Back** Guarantee
- ⚙️ **365 Days** Free Update
- ⚙️ **800,000+** Satisfied Customers





## QUESTION 1

Your company has recently decided to allow remote access for clients. You find that no one is able to connect, although you are confident that your rule set and remote access community has been defined correctly. What is the most likely cause, based on the options below? You have the following debug file: A. RDP is being blocked upstream.



```
[vpnd 3885 1982683808]@FW_1[17 Nov 15:07:09] TCPProto(601)::NewIncomingConnection  
: New incoming connection: 60, tunnel: 92 peer: 172.26.247.20  
[vpnd 3885 1982683808]@FW_1[17 Nov 15:07:09] IkeTcptDataHandler: Received 320 by  
tes on tunnel 92 for connection 60 (peer: 172.26.247.20)  
[vpnd 3885 1982683808]@FW_1[17 Nov 15:07:09] TCPTConnection::HandleIncomingData:  
Received 320 bytes on TCPT Connection 60 (peer: 172.26.247.20, tunnel: 92)  
[vpnd 3885 1982683808]@FW_1[17 Nov 15:07:09] fwisakmpd_process_incoming_data: Re  
ceived TCPT packet from 172.26.247.20 (port: 0) len: 320  
[vpnd 3885 1982683808]@FW_1[17 Nov 15:07:09] GetEntryIsakmpObjectsHash: received  
ipaddr: 14f71aac as key, found fwobj: NULL  
[vpnd 3885 1982683808]@FW_1[17 Nov 15:07:09] getConfiguredIkeVersion: RA configu  
red to use ikev2 only (peer: 172.26.247.20).  
[vpnd 3885 1982683808]@FW_1[17 Nov 15:07:09] Message::Message: New incoming requ  
est from original responder with message id 0  
[vpnd 3885 1982683808]@FW_1[17 Nov 15:07:09] Message::Message: i-spi: 20ae2ef1dd  
98272e, r-spi: 0000000000000000, next: 1, version: 16, ex type: 2, flags: 0 (enc  
[vpnd 3885 1982683808]@FW_1[17 Nov 15:07:09] fwisakmpd_process_incoming_data: re  
ceived a packet of an unsupported ike version for peer 172.26.247.20 (packet ver  
sion: ikev1, configured version: ikev2)
```

©2014 Check Point Software Technologies Ltd.

11

- B. You have selected IKEv2 only in Global Properties > Remote Access > VPN Authentication and Encryption.
- C. Remote access clients are all behind NAT devices.
- D. Implied rule is not set to accept control connections.

Correct Answer: B

## QUESTION 2

When you have edited the local.arp configuration, to support a manual NAT, what must be done to ensure proxy arps for both manual and automatic NAT rules function?

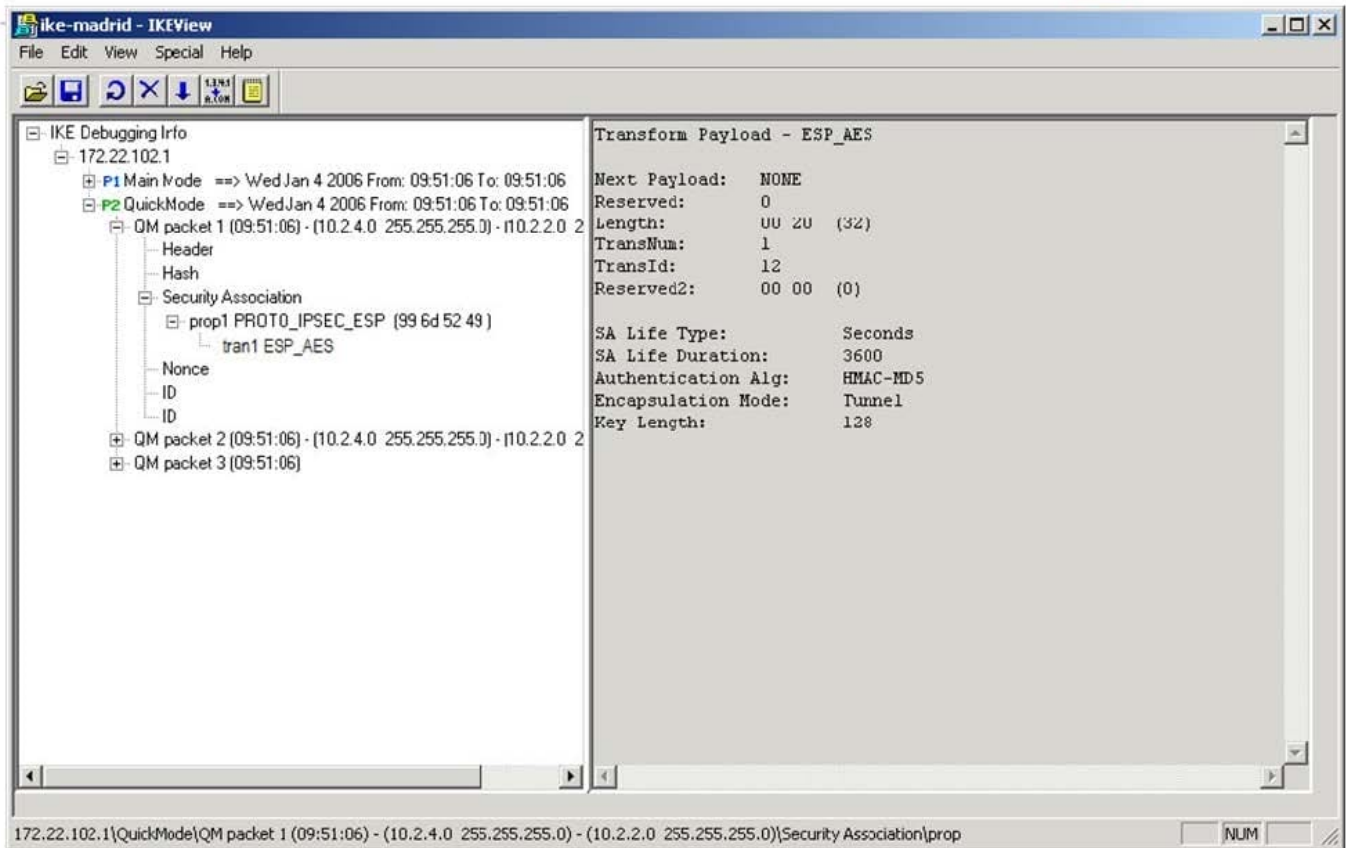
- A. In Global Properties > NAT tree select Merge manual proxy ARP configuration check box
- B. Run the command fw ctl ARP a on the gateway
- C. In Global Properties > NAT tree select Translate on client side check box
- D. Create and run a script to forward changes to the local.arp tables of your gateway

Correct Answer: A



### QUESTION 3

Given the screen configuration shown, the failure's probable cause is: A. Packet 1 Proposes SA life Type, Sa Life Duration, Authentication and Encapsulation Algorithm.



©2014 Check Point Software Technologies Ltd.

5

- B. Packet 1 proposes a symmetrical key.
- C. Packet 1 proposes a subnet and host ID, an encryption and hash algorithm.
- D. Packet 1 proposes either a subnet or host ID, an encryption and hash algorithm, and ID data.

Correct Answer: D

### QUESTION 4

What is the limit to the number of VPN directions that can be configured in a single rule?

- A. There is no limit.
- B. It is limited to the number of communities that exist in your dashboard.
- C. You may only configure one direction per rule.
- D. After configuring ten you must use a standard bi-directional condition.



Correct Answer: A

---

#### QUESTION 5

Your customer has an R77 Multi-domain Management Server managing a mix of firewalls of R70 and R77 versions. A change was made to the file \$FWDIR/lib/tables.def on one of the domains. However, it was found that the change was not applied to the R70 firewalls. What could be the problem?

- A. Changes to the table.def can only be applied to firewalls matching the Management Server version. The customer needs to upgrade the firewalls to the same version as the firewall.
- B. R70 is end of life and is not supported. Most functions will work, but modifying the table.def will not.
- C. In order to make changes on R70 machines you need work within GuiDBedit
- D. To support R70, the file in the compatibility directory should have been modified.

Correct Answer: D

[156-115.77 Practice Test](#)

[156-115.77 Exam Questions](#)

[156-115.77 Braindumps](#)