



# 156-215.77<sup>Q&As</sup>

Check Point Certified Security Administrator

## Pass CheckPoint 156-215.77 Exam with 100% Guarantee

Free Download Real Questions & Answers **PDF** and **VCE** file from:

<https://www.geekcert.com/156-215-77.html>

100% Passing Guarantee  
100% Money Back Assurance

Following Questions and Answers are all new published by CheckPoint Official Exam Center

- ⚙️ **Instant Download** After Purchase
- ⚙️ **100% Money Back** Guarantee
- ⚙️ **365 Days** Free Update
- ⚙️ **800,000+** Satisfied Customers





#### QUESTION 1

What is the Manual Client Authentication TELNET port?

- A. 23
- B. 264
- C. 900
- D. 259

Correct Answer: D

---

#### QUESTION 2

Which of the following methods will provide the most complete backup of an R77 configuration?

- A. Policy Package Management
- B. Copying the directories \$FWDIR\conf and \$CPDIR\conf to another server
- C. Execute command upgrade\_export
- D. Database Revision Control

Correct Answer: C

---

#### QUESTION 3

The fw monitor utility is used to troubleshoot which of the following problems?

- A. Phase two key negotiation
- B. Address translation
- C. Log Consolidation Engine
- D. User data base corruption

Correct Answer: B

---

#### QUESTION 4

Because of pre-existing design constraints, you set up manual NAT rules for your HTTP server. However, your FTP server and SMTP server are both using automatic NAT rules. All traffic from your FTP and SMTP servers are passing through the Security Gateway without a problem, but traffic from the Web server is dropped on rule 0 because of anti-spoofing settings. What is causing this?

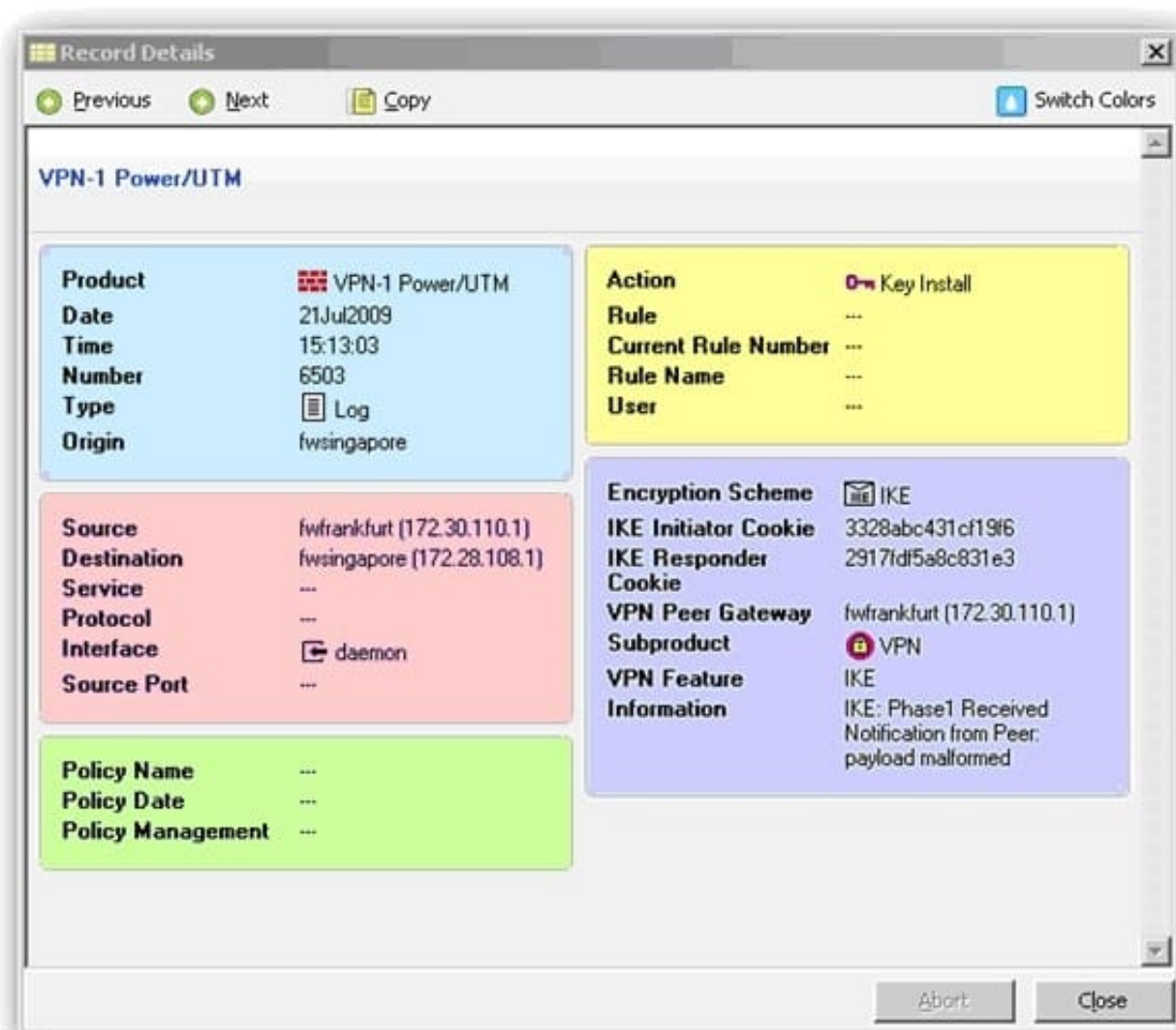


- A. Manual NAT rules are not configured correctly.
- B. Allow bi-directional NAT is not checked in Global Properties.
- C. Routing is not configured correctly.
- D. Translate destination on client side is not checked in Global Properties under Manual NAT Rules.

Correct Answer: D

## QUESTION 5

What is a possible reason for the IKE failure shown in this screenshot?



- A. Mismatch in VPN Domains.
- B. Mismatch in preshared secrets.
- C. Mismatch in Diffie-Hellman group.



D. Mismatch in encryption schemes.

Correct Answer: B

[156-215.77 VCE Dumps](#)

[156-215.77 Study Guide](#)

[156-215.77 Braindumps](#)