



# 156-315.77<sup>Q&As</sup>

Check Point Certified Security Expert

## Pass CheckPoint 156-315.77 Exam with 100% Guarantee

Free Download Real Questions & Answers **PDF** and **VCE** file from:

<https://www.geekcert.com/156-315-77.html>

100% Passing Guarantee  
100% Money Back Assurance

Following Questions and Answers are all new published by CheckPoint Official Exam Center

-  **Instant Download** After Purchase
-  **100% Money Back** Guarantee
-  **365 Days** Free Update
-  **800,000+** Satisfied Customers





### QUESTION 1

TheSmart EventCorrelation Unit:

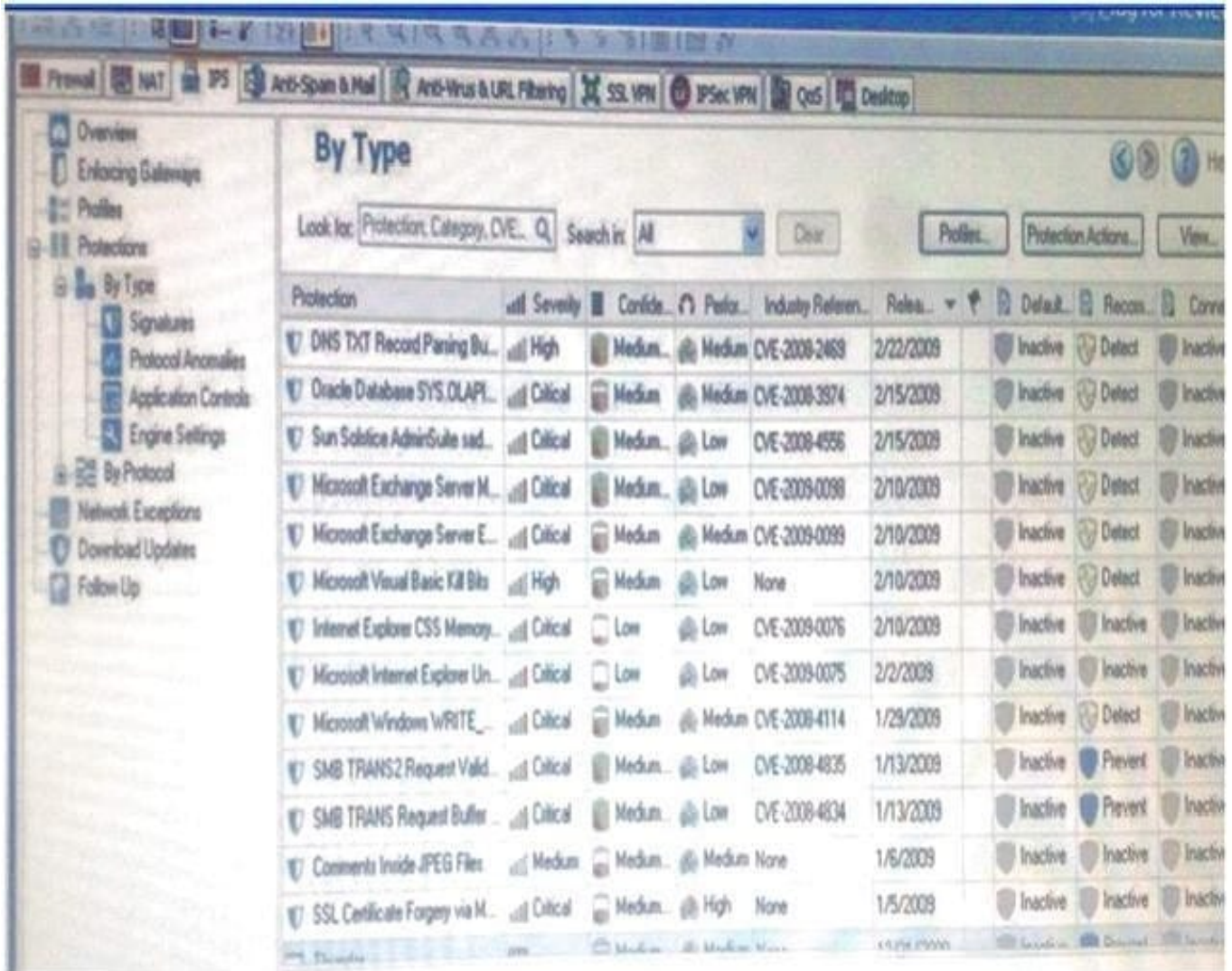
- A. adds events to the events database.
- B. assigns a severity level to an event.
- C. analyzes each IPS log entry as it enters the Log server.
- D. displays the received events.

Correct Answer: C

---

### QUESTION 2

Laura notices the Microsoft Visual Basic Bits Protection is set to inactive. She wants to set the Microsoft Visual Basic Kill Bits Protection and all other Low Performance Impact Protections to Prevent. She asks her manager for approval and stated she can turn theses on. But he wants Laura to make sure no high Performance Impacted Protections are turned on while changing this setting.



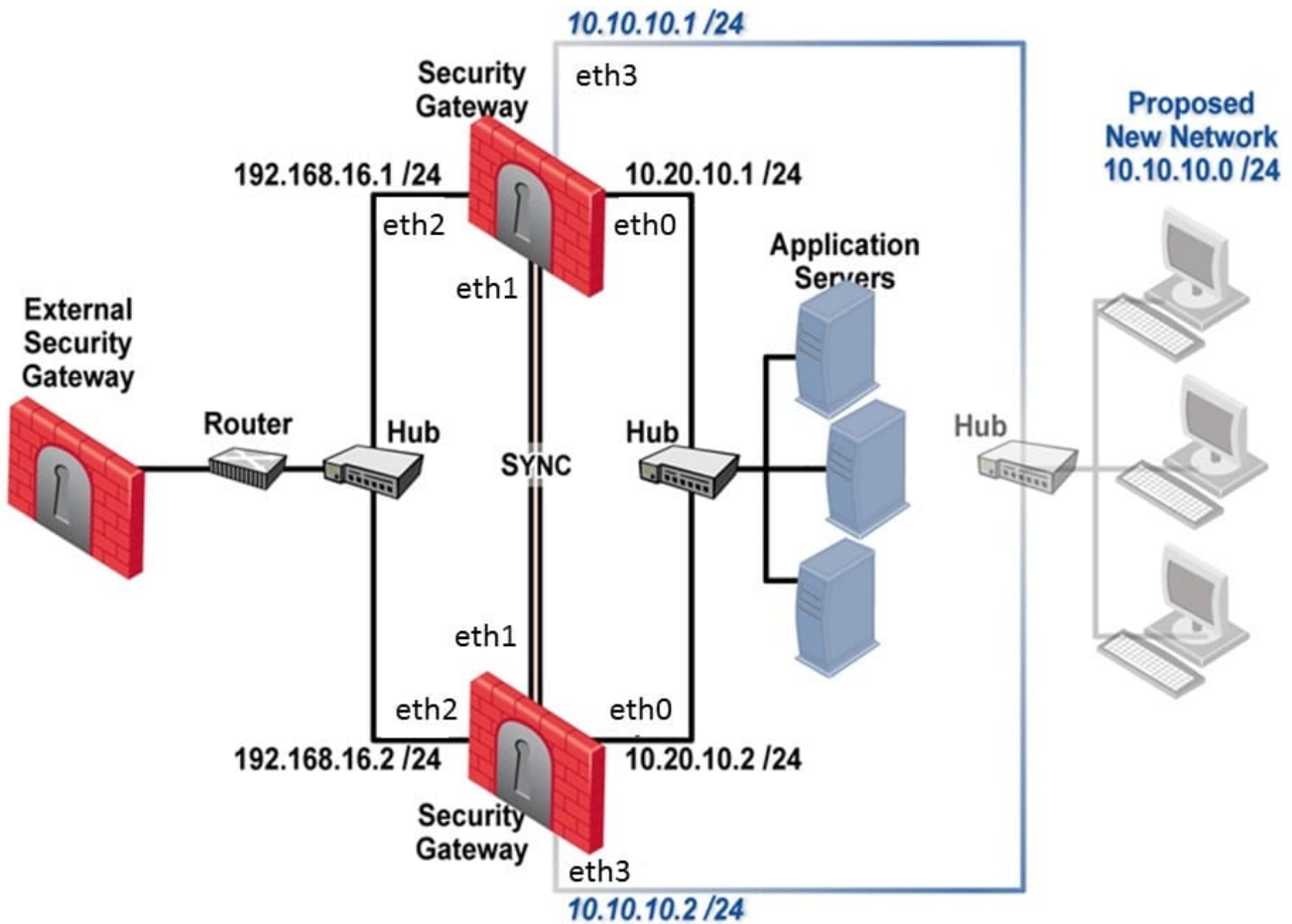
Using the out below, how would Laura change the Default\_Protection on Performance Impact Protections classified as low from inactive to prevent until meeting her other criteria?

- A. Go to Profiles / Default\_Protection and uncheck Do not activate protections with performance impact to medium or above
- B. Go to Profiles / Default\_Protection and select Do not activate protections with performance impact to low or above
- C. Go to Profiles / Default\_Protection and select Do not activate protections with performance impact to medium or above
- D. Go to Profiles / Default\_Protection and uncheck Do not activate protections with performance impact to high or above

Correct Answer: C

**QUESTION 3**

Your expanding network currently includes ClusterXL running Multicast mode on two members, as shown in this topology:



- A. You need to add interfaces: 10.10.10.1/24 on Member A, and 10.10.10.2/24 on Member
- B. The virtual IP address for these interfaces is 10.10.10.3/24. Both cluster gateways have a Quad card with an available eth3 interface. What is the correct procedure to add these interfaces?
  - C. 1. Disable "Cluster membership" from one Gateway via cpconfig.
  2.  
Configure the new interface via sysconfig from the "non-member" Gateway.
  3.  
Re-enable "Cluster membership" on the Gateway.
  4.  
Perform the same steps on the other Gateway.
  5.  
Update the topology in the cluster object.
  - 6.



Install the Security Policy.

D. 1. Configure the new interface on both members using WebUI.

2.

Update the new topology in the cluster object from SmartDashboard.

3.

Define virtual IP in the Dashboard

4.

Install the Security Policy.

E. 1. Use WebUI to configure the new interfaces on both member.

2.

Update the topology in the cluster object.

3.

Reboot both gateways.

4.

Install the Security Policy.

F. 1. Use the command ifconfig to configure and enable the new interface on both members.

2.

Update the topology in the cluster object for the cluster and both members.

3.

Install the Security Policy.

4.

Reboot the gateway.

Correct Answer: B

---

#### QUESTION 4

What is a task of the SmartEvent Client?

A. Add events to the events database.

B. Display the received events.

C. Assign a severity level to an event.



D. Analyze each IPS log entry as it enters the Log server.

Correct Answer: B

---

#### QUESTION 5

If Victor wanted to edit new Signature Protections, what tab would he need to access in SmartDashboard?

- A. QoS Tab
- B. SmartDefense Tab
- C. IPSec VPN Tab
- D. IPS Tab

Correct Answer: D

[156-315.77 PDF Dumps](#)

[156-315.77 Study Guide](#)

[156-315.77 Braindumps](#)