



156-915.77^{Q&As}

Check Point Certified Security Expert Update

Pass CheckPoint 156-915.77 Exam with 100% Guarantee

Free Download Real Questions & Answers **PDF** and **VCE** file from:

<https://www.geekcert.com/156-915-77.html>

100% Passing Guarantee
100% Money Back Assurance

Following Questions and Answers are all new published by CheckPoint Official Exam Center

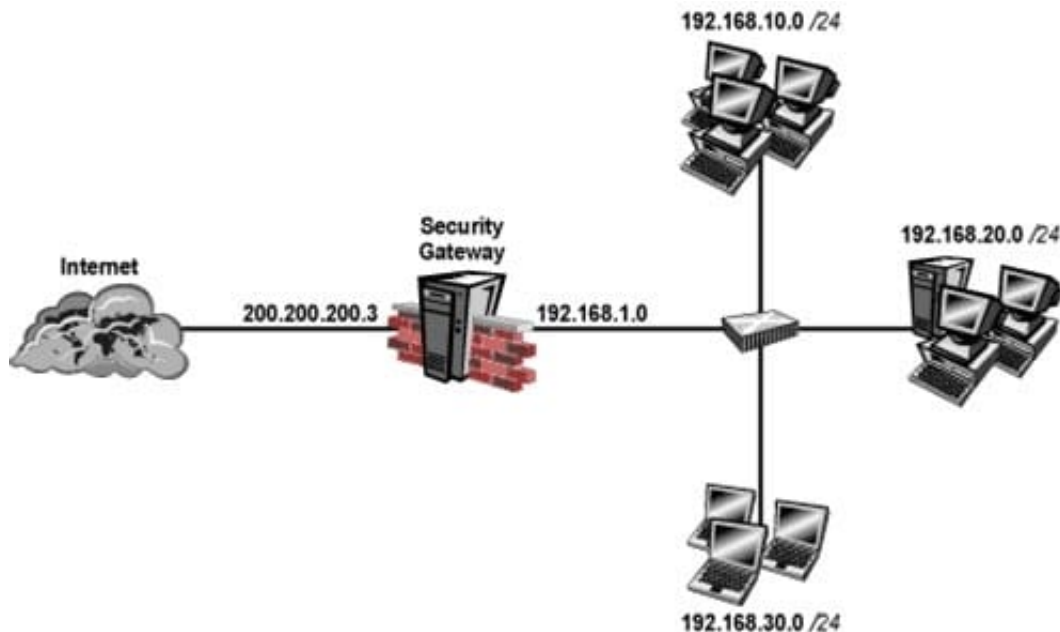
- ⚙️ **Instant Download** After Purchase
- ⚙️ **100% Money Back** Guarantee
- ⚙️ **365 Days** Free Update
- ⚙️ **800,000+** Satisfied Customers





QUESTION 1

Your perimeter Security Gateway's external IP is 200.200.200.3. Your network diagram shows:



Required: Allow only network 192.168.10.0 and 192.168.20.0 to go out to the Internet, using 200.200.200.5.

The local network 192.168.1.0/24 needs to use 200.200.200.3 to go out to the Internet.

Assuming you enable all the settings in the NAT page of Global Properties, how could you achieve these requirements?

- A. Create network objects for 192.168.10.0/24 and 192.168.20.0/24. Enable Hide NAT on both network objects, using 200.200.200.5 as hiding IP address. Add an ARP entry for 200.200.200.3 for the MAC address of 200.200.200.5.
- B. Create an Address Range object, starting from 192.168.10.1 to 192.168.20.254. Enable Hide NAT on the NAT page of the address range object. Enter Hiding IP address 200.200.200.5. Add an ARP entry for 200.200.200.5 for the MAC address of 200.200.200.3.
- C. Create a network object 192.168.0.0/16. Enable Hide NAT on the NAT page. Enter 200.200.200.5 as the hiding IP address. Add an ARP entry for 200.200.200.5 for the MAC address of 200.200.200.3.
- D. Create two network objects: 192.168.10.0/24 and 192.168.20.0/24. Add the two network objects to a group object. Create a manual NAT rule like the following: Original source - group object; Destination any; Service - any; Translated source - 200.200.200.5; Destination - original; Service - original.

Correct Answer: B

QUESTION 2

SmartReporter reports can be used to analyze data from a penetration-testing regimen in all of the following examples,



EXCEPT:

- A. Analyzing traffic patterns against public resources.
- B. Possible worm/malware activity.
- C. Analyzing access attempts via social-engineering.
- D. Tracking attempted port scans.

Correct Answer: C

QUESTION 3

Assume you are a Security Administrator for ABCTech. You have allowed authenticated access to users from Mktng_net to Finance_net. But in the user's properties, connections are only permitted within Mktng_net. What is the BEST way to resolve this conflict?

- A. Select Ignore Database in the Action Properties window.
- B. Permit access to Finance_net.
- C. Select Intersect with user database in the Action Properties window.
- D. Select Intersect with user database or Ignore Database in the Action Properties window.

Correct Answer: D

QUESTION 4

Fill in the blank. What is the correct command and syntax used to view a connection table summary on a Check Point Firewall?

- A. fw tab -t connections -s

Correct Answer: A

QUESTION 5

Which Security Gateway R77 configuration setting forces the Client Authentication authorization time-out to refresh, each time a new user is authenticated? The:

- A. Time properties, adjusted on the user objects for each user, in the Client Authentication rule Source.
- B. IPS > Application Intelligence > Client Authentication > Refresh User Timeout option enabled.
- C. Refreshable Timeout setting, in Client Authentication Action Properties > Limits.
- D. Global Properties > Authentication parameters, adjusted to allow for Regular Client Refreshment.

Correct Answer: C



VCE & PDF

GeekCert.com

<https://www.geekcert.com/156-915-77.html>

2024 Latest geekcert 156-915.77 PDF and VCE dumps Download

[156-915.77 VCE Dumps](#)

[156-915.77 Exam Questions](#)

[156-915.77 Braindumps](#)