



199-01^{Q&As}

Riverbed Certified Solutions Professional

Pass Riverbed 199-01 Exam with 100% Guarantee

Free Download Real Questions & Answers **PDF** and **VCE** file from:

<https://www.geekcert.com/199-01.html>

100% Passing Guarantee
100% Money Back Assurance

Following Questions and Answers are all new published by Riverbed
Official Exam Center

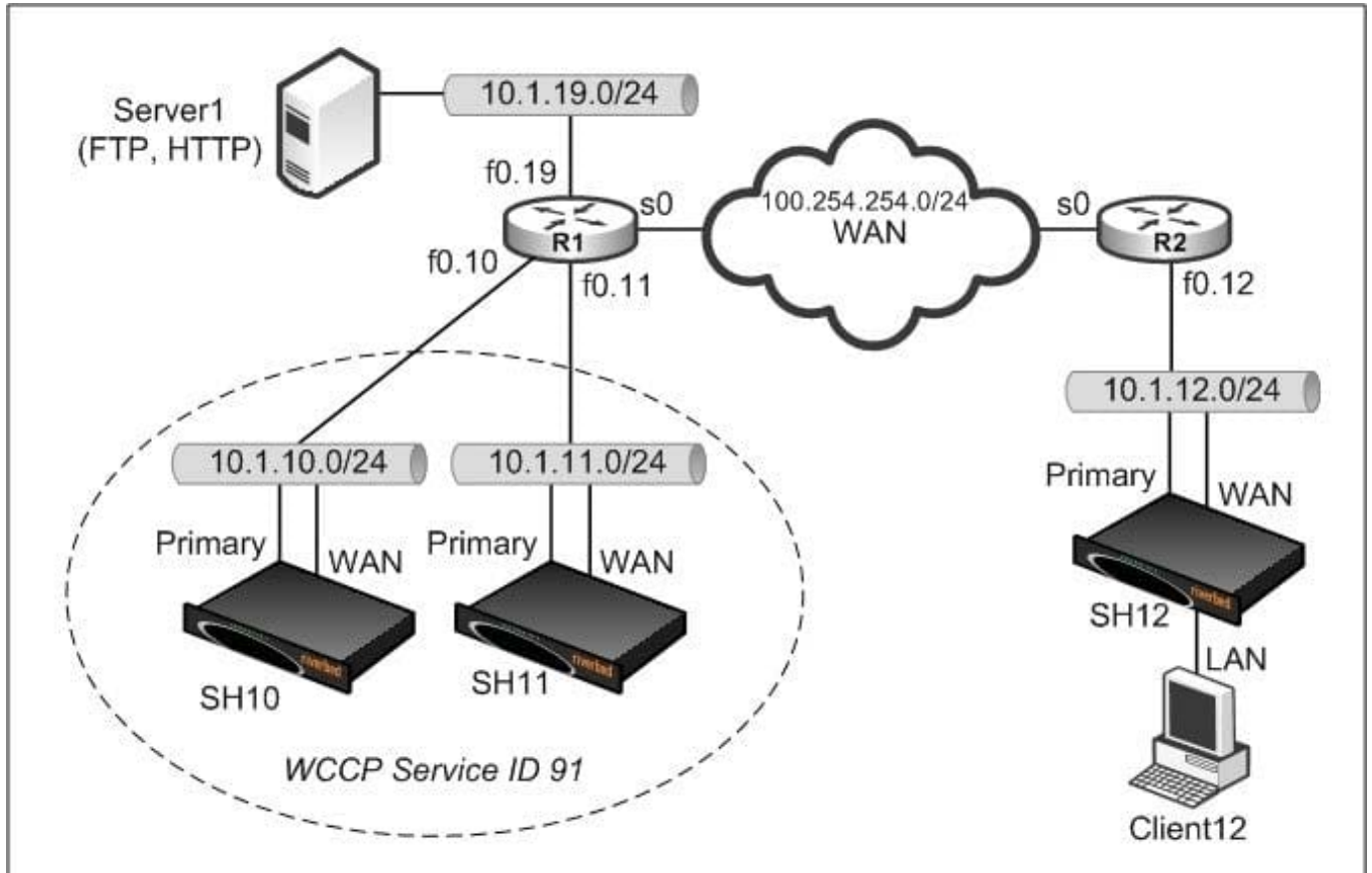
-  **Instant Download** After Purchase
-  **100% Money Back** Guarantee
-  **365 Days** Free Update
-  **800,000+** Satisfied Customers





QUESTION 1

Refer to the exhibit.



Assume that a packet being optimized by SH10 incorrectly ends up on SH11 (due to load balancing error, or similar). How can you ensure that this packet is correctly returned to SH10?

- A. Set the WCCP weight of SH10 to be higher than that of SH11
- B. Use fixed-target rules explicitly at SH12 to peer to SH10
- C. Enable destination IP hash and destination port hash
- D. Enable destination IP hash and source port hash
- E. Enable destination IP hash and source IP hash
- F. Enable Connection Forwarding

Correct Answer: F

QUESTION 2

Which TCP port will two Interceptor appliances communicate across in a parallel deployment?



- A. 7800
- B. 7810
- C. 7840
- D. 7850
- E. 7860

Correct Answer: E

QUESTION 3

Place the following commands to upgrade a Steelhead appliance from the CLI in the correct order. (Note. include only the necessary steps) 1) SH (config) image install image.img 2) SH (config) image fetch http://server/path/image.img 3) SH (config) boot system 2 4) SH (config) restart clean 5) SH (config) reload 6) SH (config) write memory

- A. 1, 2, 3, 4, 5, 6
- B. 2, 3, 5, 1, 6
- C. 1, 2, 5, 4
- D. 2, 1, 3, 6, 5
- E. 1, 2, 3, 6, 5

Correct Answer: D

QUESTION 4

In configuring failover settings, which of the following interfaces is used for communicating with the backup Steelhead appliance?

- A. inpath0_0
- B. inpath0_1
- C. Primary
- D. AUX
- E. None of the above

Correct Answer: A

QUESTION 5

You need to perform a tcpdump of traffic entering the Steelhead appliance's lan0_0 interface. Which of the following demonstrate the proper command format to perform the tcpdump and capture to a file?



A. tcpdump -p lan0_0 -S 300 -w lancap.cap

B. tcpdump -i lan0_0 -s 300 -w lancap.cap

C. tcpdump -i lan0_0

D. tcpdump -l lan0_0 -s 300

E. tcpdump -i lan0_0 -3 300 -r lancap.cap

Correct Answer: B

[Latest 199-01 Dumps](#)

[199-01 Study Guide](#)

[199-01 Braindumps](#)