



1Y0-201^{Q&As}

Managing Citrix XenDesktop 7.6 Solutions exam

Pass Citrix 1Y0-201 Exam with 100% Guarantee

Free Download Real Questions & Answers **PDF** and **VCE** file from:

<https://www.geekcert.com/1y0-201.html>

100% Passing Guarantee
100% Money Back Assurance

Following Questions and Answers are all new published by Citrix
Official Exam Center

- ⚙️ **Instant Download** After Purchase
- ⚙️ **100% Money Back** Guarantee
- ⚙️ **365 Days** Free Update
- ⚙️ **800,000+** Satisfied Customers





QUESTION 1

Scenario: Users are unable to log on to the Citrix StoreFront store. When users attempt to log in, they are presented with the following error:

\\'Cannot complete your request. You can log on and try again, or contact your help desk for assistance.\\' Which service on the StoreFront server should a Citrix Administrator ensure is running in order to resolve this issue?

- A. Citrix Licensing
- B. Citrix Configuration
- C. Citrix ICA File Signing
- D. Citrix Credential Wallet

Correct Answer: D

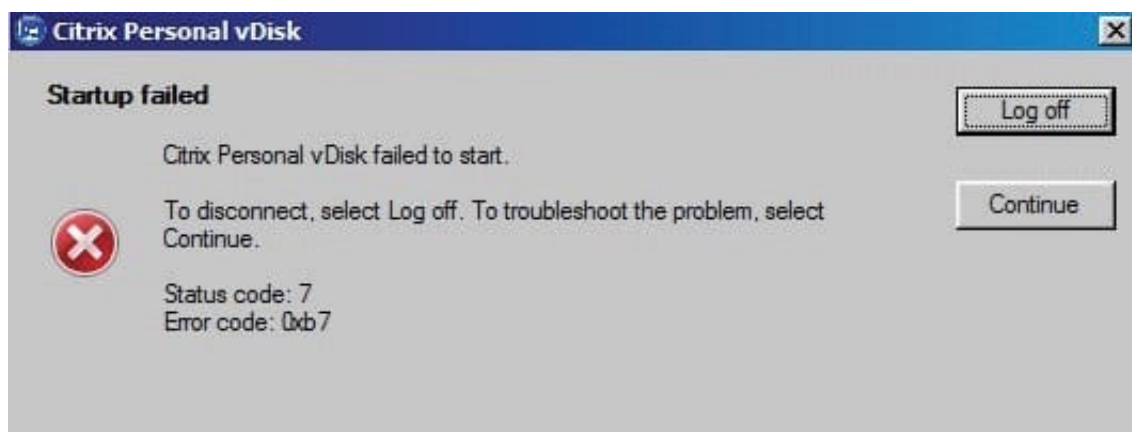
QUESTION 2

Scenario: A Citrix Administrator created a Device Collection and a Delivery Group for the Human Resources (HR) and Accounting user groups. The administrator used the XenDesktop Setup Wizard to create the Desktop OS machines and

assigned the V: drive as their personal drives. While testing all the new configurations prior to rolling out the Desktop OS machines to the HR user group, the administrator receives an error when attempting to access the V: drive. Users from

the Accounting user group do NOT receive the error.

Click on the Exhibit button to view the error.



How could the administrator resolve this issue?

- A. Change the V: drive to another drive letter.
- B. Run the inventory update on the master image and release the image to the HR user group.



- C. Recreate the master image with Personal vDisk and release that image to the HR user group.
- D. Delete all of the Desktop OS machines and rerun the Streamed VM Setup Wizard to recreate the Desktop OS machines.

Correct Answer: A

QUESTION 3

A user is unable to log on to the StoreFront store through Citrix Receiver. Where should a Citrix Administrator go to enable logging to troubleshoot this issue?

- A. Citrix Studio
- B. Citrix Director
- C. StoreFront Management Console
- D. Registry Editor on the StoreFront server

Correct Answer: D

QUESTION 4

SIMULATION

Scenario: A Citrix Administrator must use the Provisioning Services Console to add three additional server OS machines to CCH\\s environment. The administrator must add the machines to an existing machine catalog named Server 2012

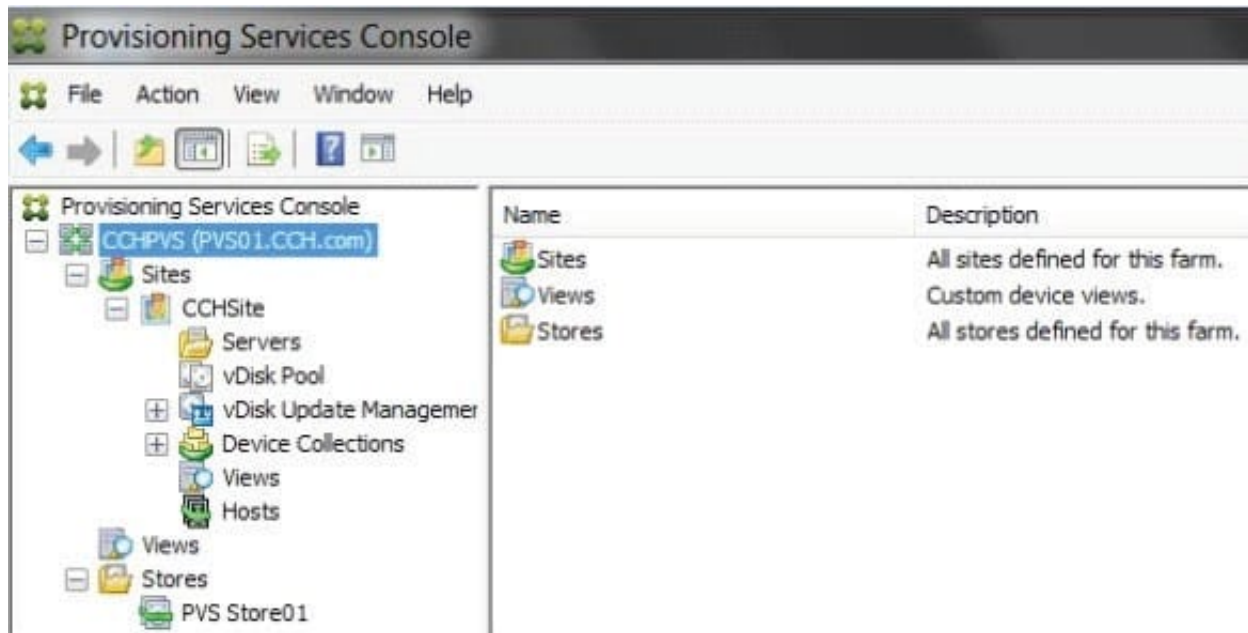
and the machines should be assigned the ServerOS2012 vDisk. The administrator must name the machines AppServer04, AppServer05 and AppServer06, respectively, and the machines should be added to the Server OS Machines OU, with

plans to add 20 more server OS machines in the future. Provisioning Services is configured to use Network0 as a streaming network interface card.

There is currently one Delivery Controller in the environment named Controller-1. This Delivery Controller is a member of the CCH.com domain.

The username for the hypervisor is root, and the password is Password 1. Tasks:

1. Create three target devices named AppServer04, AppServer05 and AppServer06, respectively.



2. Ensure the target devices are configured according to the requirements outlined in the scenario.

Correct Answer:

- 1) Right click on "CCHSite" and click on XenDesktop Setup Wizard.
- 2) From the "Welcome to XenDesktop" dialog window click on Next.
- 3) From the "XenDesktop Controller" dialog window type in Controller-1 in the "XenDesktop Controller address:" field then click on Next.
- 4) From the "XenDesktop Host Resources" dialog windows click on Next.
- 5) From the "XenDesktop Host Resources Credentials" popup window type in the password of Password1 for the username "Root" then click on OK.
- 6) From the "Template" dialog window select the Server 2012 template then click on Next.
- 7) From the "vDisk" dialog window select ServerOS2012 vdisk then click no Next.
- 8) From the "Catalog" dialog window select Create a new catalog, type in a "Catalog name:" of Server 2012 then click on Next.
- 9) From the "Operating System" select Windows Server Operating System then click on Next.
- 10) From the "Virtual machines" dialog windows increase the number of "Virtual machines to create:" 3 then click on Next.
- 11) From the "Active Directory" dialog window verify "Create new accounts" is selected then click on Next.
- 12) From the "Active Directory accounts and location" dialog window Server OS Machines OU, in the "Account naming scheme" field type in AppServer##, select 0-9 from the drop down to the right, then click on Next.
- 13) From the "Summary" dialog window click on Finish.
- 14) When the devices are finished creating click on Done.



QUESTION 5

What should a Citrix Administrator do to ensure that a vDisk is properly load balanced across multiple Provisioning Services servers in an environment where the Streaming Service is working properly?

- A. Go to the vDisk properties to ensure that load balancing is set.
- B. Rebalance the target devices across the Provisioning Services servers.
- C. Create a separate store and assign servers from different sites to load balance the vDisk.
- D. Check the association of the servers to a site to ensure all servers are configured to separate sites.

Correct Answer: B

[Latest 1Y0-201 Dumps](#)

[1Y0-201 VCE Dumps](#)

[1Y0-201 Braindumps](#)