



1Y0-301^{Q&As}

Deploying Citrix XenDesktop 7.6 Solutions

Pass home 1Y0-301 Exam with 100% Guarantee

Free Download Real Questions & Answers **PDF** and **VCE** file from:

<https://www.geekcert.com/1y0-301.html>

100% Passing Guarantee
100% Money Back Assurance

Following Questions and Answers are all new published by home
Official Exam Center

-  **Instant Download** After Purchase
-  **100% Money Back** Guarantee
-  **365 Days** Free Update
-  **800,000+** Satisfied Customers





QUESTION 1

Which switch is required to install Citrix Receiver with pass-through authentication?

- A. includeSSON
- B. enable_SSON
- C. enable_Kerberos
- D. ALLOWSAFEPWD=S

Correct Answer: A Section: (none)

QUESTION 2

How should a Citrix Engineer configure a hosted application so that only a subset of users within an existing Delivery Group are able to access the hosted application?

- A. Configure the '\\Prefer\\' keyword.
- B. Configure Limit Visibility to the target users.
- C. Create an HDX policy based on the user group.
- D. Publish the application to only the subset of users.

Correct Answer: B Section: (none)

QUESTION 3

Which keyword should a Citrix Engineer use to launch the locally installed version of a hosted application when it is available?

- A. Auto
- B. Prefer
- C. Primary
- D. Featured

Correct Answer: B Section: (none)

QUESTION 4

Scenario: Users of a corporate StoreFront deployment subscribe to their commonly used applications. A Citrix Engineer creates a second StoreFront deployment group; however when users connect to this deployment their subscribed application preferences are NOT retained.



How could the engineer ensure that the subscriptions are visible in the second deployment?

- A. Configure subscription synchronization using PowerShell.
- B. Edit the web.config file and include the other StoreFront deployment.
- C. Ensure that the second StoreFront server group is in the trusted site zone.
- D. Use a script to copy the c:\inetpub folders between all the StoreFront servers.

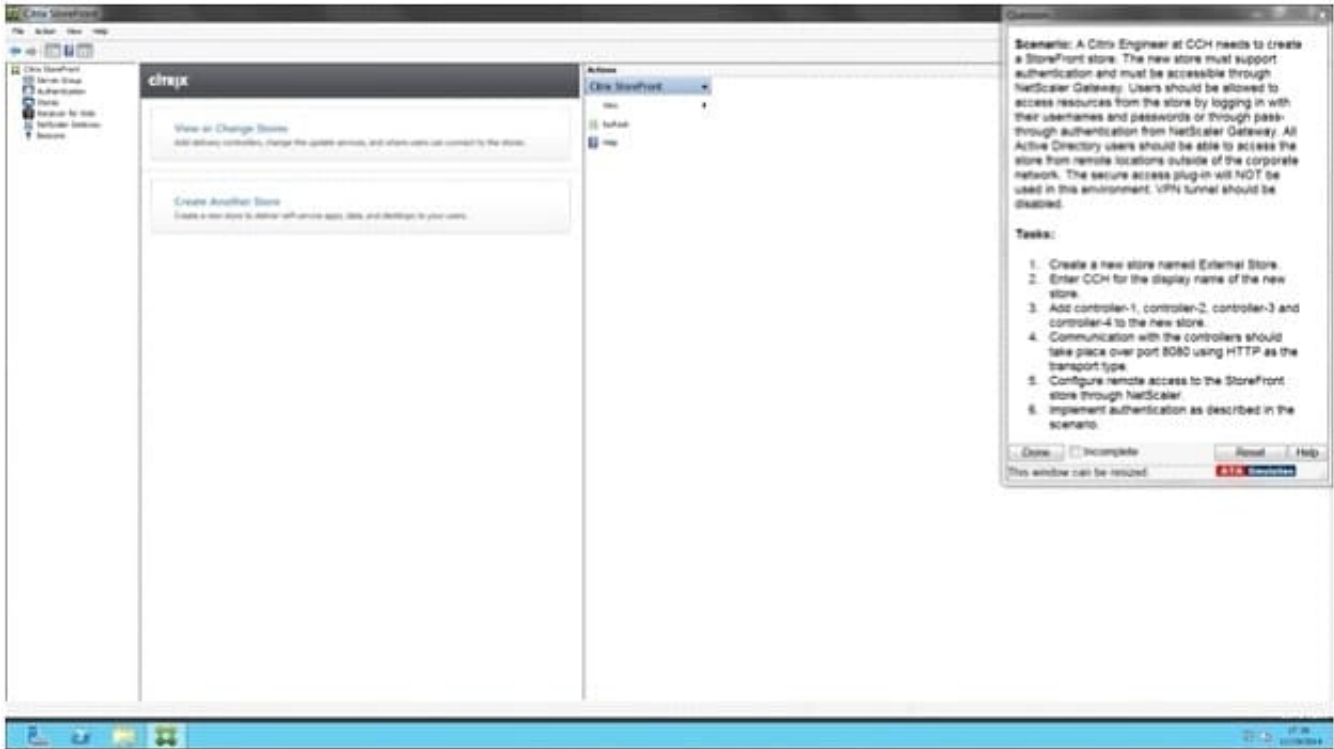
Correct Answer: A Section: (none)

QUESTION 5

CORRECT TEXT Scenario: A Citrix Engineer at CCH needs to create a StoreFront store. The new store must support authentication and must be accessible through NetScaler Gateway. Users should be allowed to access resources from the store by logging in with their usernames and passwords or through pass-through authentication from NetScaler Gateway. All Active Directory users should be able to access the store from remote locations outside of the corporate network. The secure access plug-in will NOT be used in this environment. VPN tunnel should be disabled.

Tasks:

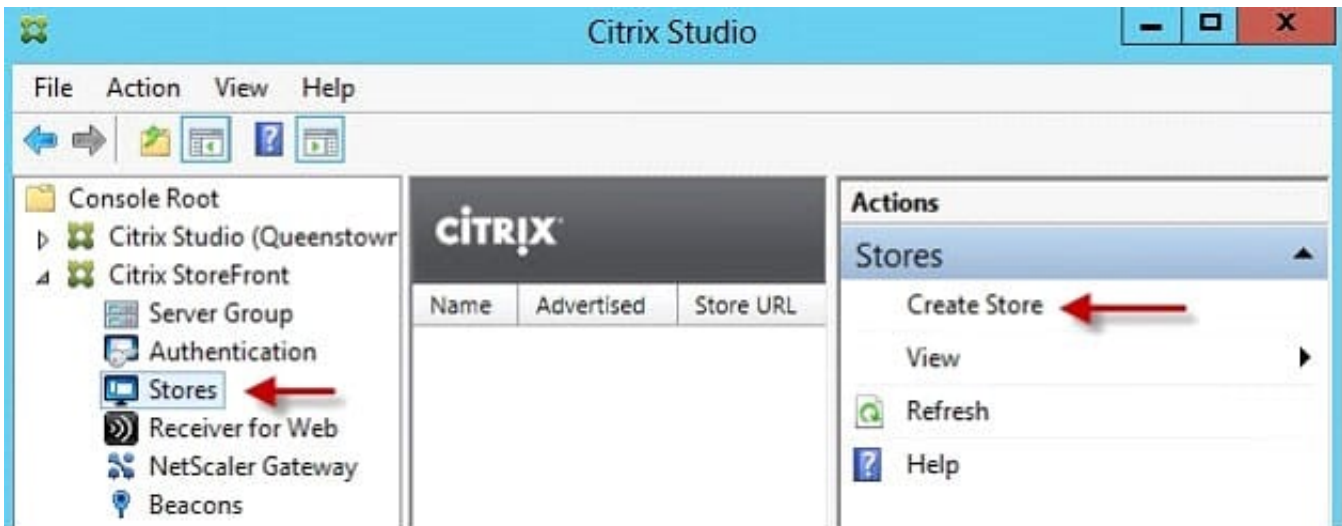
1.
Create a new store named External Store.
2.
Enter CCH for the display name of the new store.
3.
Add controller-1, controller-2, controller-3 and controller-4 to the new store.
4.
Communication with the controllers should take place over port 8080 using HTTP as the transport type.
5.
Configure remote access to the StoreFront store through NetScaler.
6.
Implement authentication as described in the scenario.



A.

Correct Answer: A Section: (none)

Answer: Find the solution with all steps below. Citrix StoreFront Configuration



1. When the wizard starts enter a store name.



Store Name

Choose a name that helps users identify the store. The store name is visible to all users of the user's account.

Store name:

External Store

2. Now we need to add the delivery controllers (Controller1) that StoreFront will interface with

Add Delivery Controller

Display name:

Type:

- XenDesktop
- XenApp
- AppController
- VDI-in-a-Box

Servers (in failover order):

Transport type:

Port:

CCH

Add Controller1, 2,3 and 4 here

Use Port 8080

Use HTTP

Remote Access

Add NetScaler Gateway appliances to provide user access from external networks.

Remote access:

- None
- No VPN tunnel ⓘ
- Full VPN tunnel ⓘ

NetScaler Gateway appliances:

Default appliance:

Use this option

Use this to select the already configured default appliance in the simulation or add using the add button above



6.

Once the store is created it will give you the web browser URL that you can use to access it. Also take note that to access StoreFront from a web browser you must append "Web" to the store URL, as the URL shows below. Don't try going to /Citrix/Store as that won't work.

7.

To change the StoreFront base URL you can go to the Server Group node and in the right pane select Change Base URL. Change URL to use HTTPS and port 8080

8.

Back in the StoreFront console, after refreshing, you can see that the service is using HTTP.

9.

One quick tweak to make authentication easier is to set a default domain. This way the user doesn't have to enter a domain when authenticating to the StoreFront web site. Locate the Authentication node, then in the right pane click on Configure Trusted Domains.

"Store" Created Successfully

Store available

Use email addresses for account discovery. [Learn more](#)

Website created

Try out the store at <http://d001xd01.contoso.net/Citrix/StoreWeb>.

Citrix Receiver updates

Choose how Citrix Receiver can install updates. [Edit Settings](#)

Change Base URL

Change Base URL

Modify the base URL for services hosted on this deployment. For multiple server deployments, specify the load-balanced URL for the server group.

Base URL:



Name	Advertised	Store URL
Store	Yes	https://d001xd01.contoso.net/Citrix/Store

Store

Overview

Advertised: Yes
URL: https://d001xd01.contoso.net/Citrix/Store

Status

✔ Service using HTTPS. ←

Configure Trusted Domains

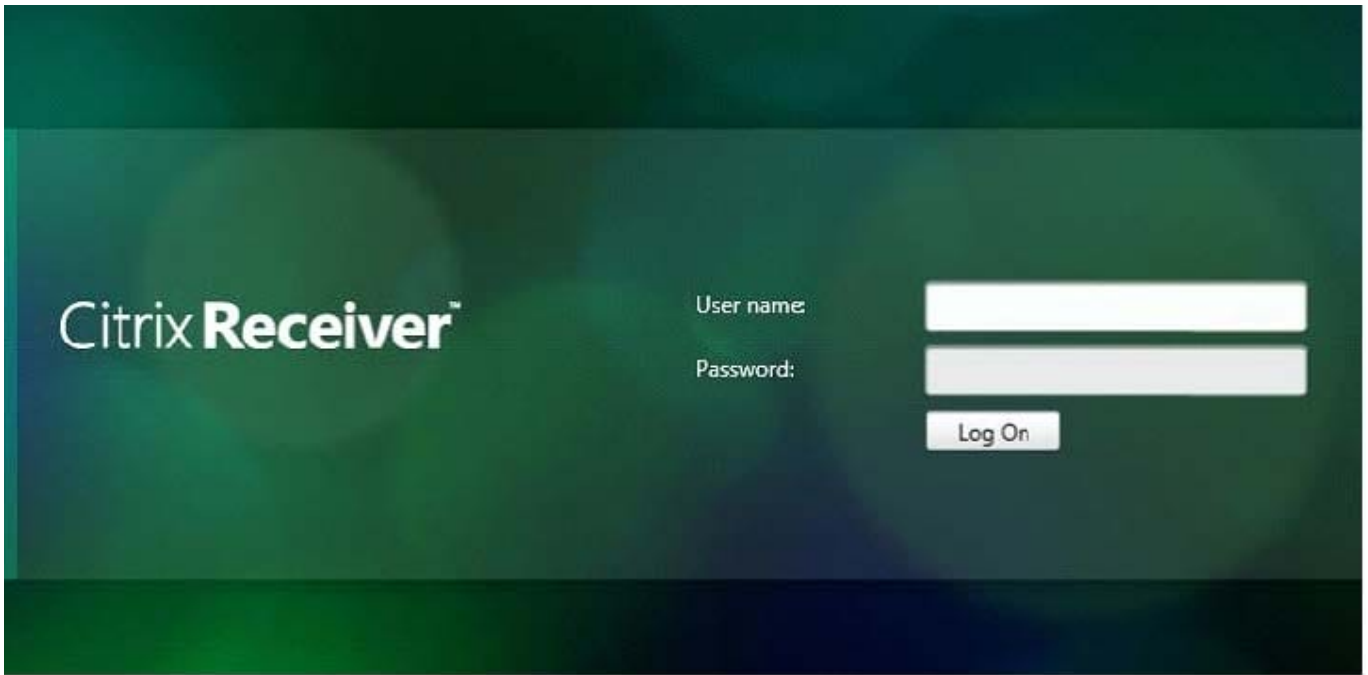
Allow users to log on from: Any domain
 Trusted domains only

Trusted domains: contoso

Add... Edit... Remove

Default domain: contoso

And that's pretty much it to get an operational StoreFront. If you open your browser and go to the full web store URL you should get a green bubbly Citrix receiver page.



[1Y0-301 PDF Dumps](#)

[1Y0-301 VCE Dumps](#)

[1Y0-301 Study Guide](#)