



1Y0-301^{Q&As}

Deploying Citrix XenDesktop 7.6 Solutions

Pass home 1Y0-301 Exam with 100% Guarantee

Free Download Real Questions & Answers **PDF** and **VCE** file from:

<https://www.geekcert.com/1y0-301.html>

100% Passing Guarantee
100% Money Back Assurance

Following Questions and Answers are all new published by home
Official Exam Center

-  **Instant Download** After Purchase
-  **100% Money Back** Guarantee
-  **365 Days** Free Update
-  **800,000+** Satisfied Customers





QUESTION 1

CORRECT TEXT

Scenario: A Citrix Engineer at CCH needs to provide owners of a specific application with delegated administrative rights to perform specific tasks on their application and the servers hosting their application. The application owners need permissions to do the following: Add and remove the application from a Delivery Group Create and delete applications Edit application properties Add and remove the application from Maintenance Mode Perform power operations on Windows Server machines

Permissions should be specifically granted to the CCH\MedAppAdmins group and assigned to a custom scope.

Tasks:

1.

Create a custom role named MedAppAdmins.

2.

Assign only the required permissions to the newly created role.

3.

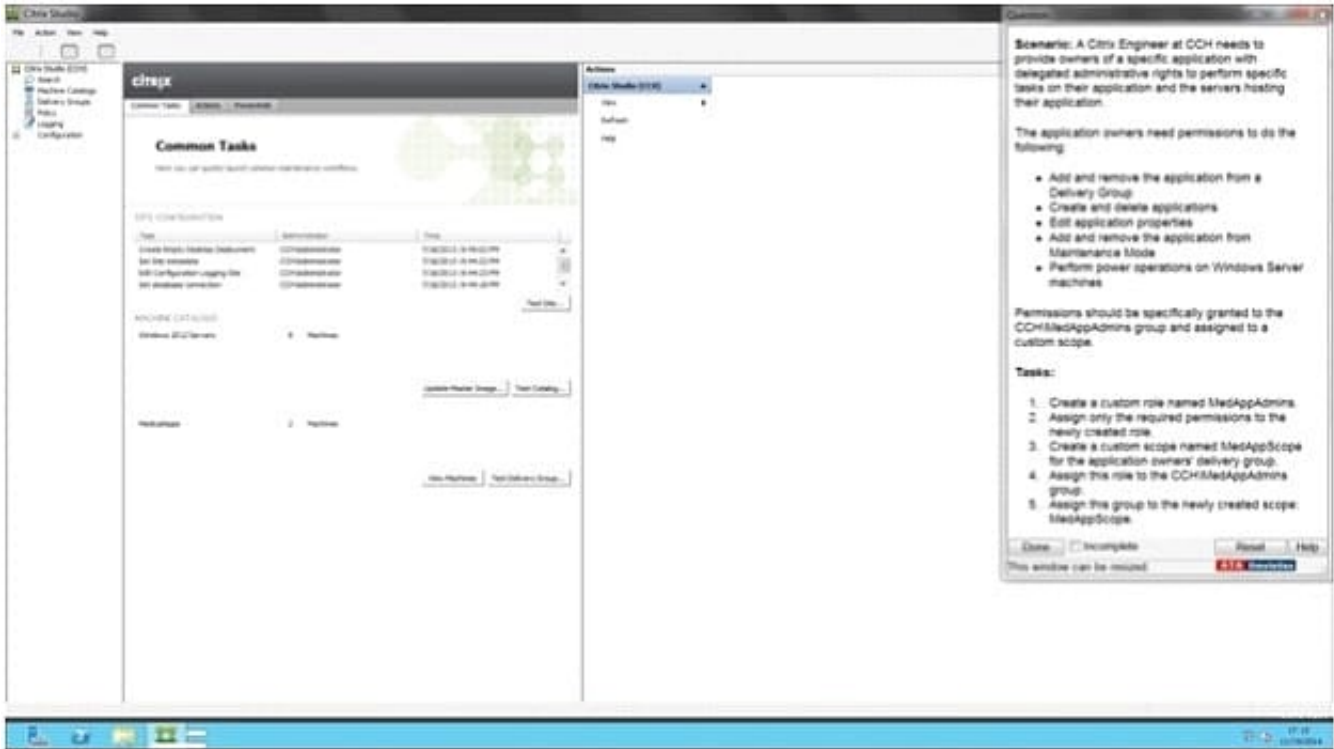
Create a custom scope named MedAppScope for the application owners\' delivery group.

4.

Assign this role to the CCH\MedAppAdmins group.

5.

Assign this group to the newly created scope: MedAppScope.



A.

Correct Answer: A Section: (none)

Answer: Find the solution with all steps below. To create a custom role

1.

In Studio, click Configuration > Administrators in the left pane, then click the Roles tab in the middle pane. A list of existing roles appears.

2.

In the Actions pane, click Create new Role.

3.

Type a name and description for the role.

4.

For each object type that you want this role to have permissions for, select the object type, then select the permissions.

- Add and remove the application from a Delivery Group
- Create and delete applications
- Edit application properties
- Add and remove the application from Maintenance Mode
- Perform power operations on Windows Server machines



1. Click Save. To create a scope

1.

In Studio, click Configuration > Administrators in the left pane, then click the Scopes tab in the middle pane. A list of existing scopes appears.

2.

In the Actions pane, click Create new Scope.

3.

Type a name (for example, '\\Sales\\') and a description (for example, '\\Delivery Groups used by Sales\\') for the scope.

4.

Select object types or specific objects:

a.

To select all objects of a particular type (for example, Delivery Groups), select the object type.

b.

To select specific objects, expand the type, then select the individual objects (for example, individual Delivery Groups used by the Sales team).

5. Click Save.

QUESTION 2

Scenario: Users at a healthcare organization experience delays when accessing a critical application because they have to log on to StoreFront first and then the application.

A Citrix Engineer needs to configure access so that users are automatically presented with the logon prompt for the application so that they are NOT required to log on to the StoreFront site.

Which two steps should the engineer take to configure access? (Choose two.)

- A. Configure Legacy Support for the store.
- B. Create a store for unauthenticated users.
- C. Configure the application for anonymous user.
- D. Configure anonymous access for the Default Web Site in IIS.
- E. Set UseLocalUserandPassword=on in default.ica file in the StoreFront site.

Correct Answer: BC Section: (none)



QUESTION 3

CORRECT TEXT

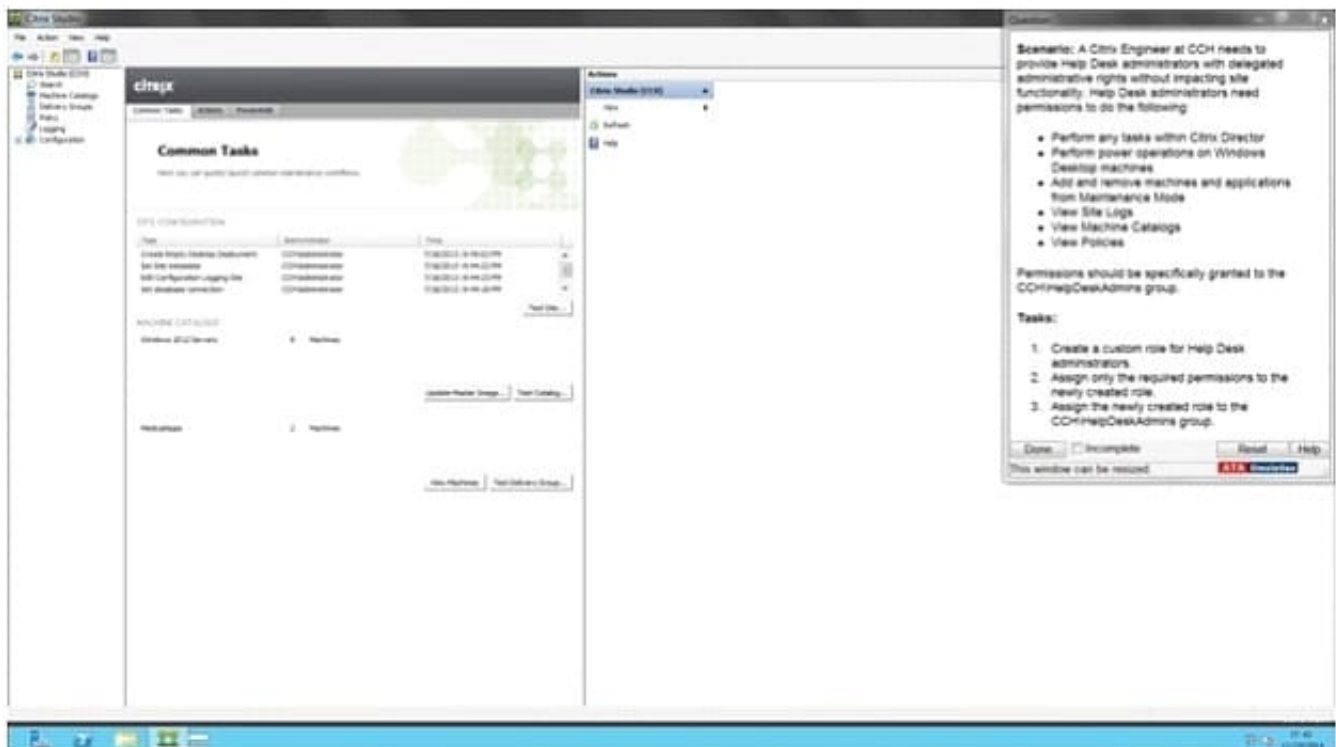
Scenario: A Citrix Engineer at CCH needs to provide Help Desk administrators with delegated administrative rights without impacting site functionality.

Help Desk administrators need permissions to do the following:

Perform any tasks within Citrix Director Perform power operations on Windows Desktop machines Add and remove machines and applications from Maintenance Mode View Site Logs View Machine Catalogs View Policies

Permissions should be specifically granted to the CCH\HelpDeskAdmins group. Tasks:

1.
Create a custom role for Help Desk administrators.
2.
Assign only the required permissions to the newly created role.
3.
Assign the newly created role to the CCH\HelpDeskAdmins group.



A.

Correct Answer: A Section: (none)

Answer: Find the solution with all steps below.



To create a custom role

In Studio, click Configuration > Administrators in the left pane, then click the Roles tab in the middle pane.

A list of existing roles appears.

In the Actions pane, click Create new Role.

Type a name and description for the role.

HelpDeskAdmins

For each object type that you want this role to have permissions for, select the object type, then select the permissions.

- Perform any tasks within Citrix Director
- Perform power operations on Windows Desktop machines
- Add and remove machines and applications from Maintenance Mode
- View Site Logs
- View Machine Catalogs
- View Policies

Click Save.

To create a scope

In Studio, click Configuration > Administrators in the left pane, then click the Scopes tab in the middle pane. A list of existing scopes appears.

In the Actions pane, click Create new Scope.

Type a name (for example, \\Sales\\) and a description (for example, \\Delivery Groups used by Sales\\) for the scope.

HelpDeskAdmins

Select object types or specific objects:

Click Save.

QUESTION 4

Which policy option allows for advanced printer options for large industrial printers while keeping drivers to a minimum and accounting for multiple printer models in use?

- A. Use only printer model specific drivers.
- B. Use automatic installation of in-box printer drivers.



C. Use universal printing only if requested driver is unavailable.

D. Change the universal driver preference to PCL5c, EMF, XPS.

Correct Answer: C Section: (none)

QUESTION 5

Which switch is required to install Citrix Receiver with pass-through authentication?

A. includeSSON

B. enable_SSON

C. enable_Kerberos

D. ALLOWSAFEPWD=S

Correct Answer: A Section: (none)

[1Y0-301 Practice Test](#)

[1Y0-301 Exam Questions](#)

[1Y0-301 Braindumps](#)