



# 1Y0-301<sup>Q&As</sup>

Deploying Citrix XenDesktop 7.6 Solutions

## Pass Citrix 1Y0-301 Exam with 100% Guarantee

Free Download Real Questions & Answers **PDF** and **VCE** file from:

<https://www.geekcert.com/1y0-301.html>

100% Passing Guarantee  
100% Money Back Assurance

Following Questions and Answers are all new published by Citrix  
Official Exam Center

- ⚙ **Instant Download** After Purchase
- ⚙ **100% Money Back** Guarantee
- ⚙ **365 Days** Free Update
- ⚙ **800,000+** Satisfied Customers





### QUESTION 1

Which two items are required when creating a machine catalog for Desktop OS machines using Machine Creation Services? (Choose two.)

- A. Bootstrap file
- B. Master image
- C. Target device
- D. Remote access policy
- E. Account naming convention

Correct Answer: BE Section: (none)

---

### QUESTION 2

#### CORRECT TEXT

Scenario: Provisioning Services has been installed to facilitate the deployment of Windows 8 desktops and web servers. A Citrix Engineer is instructed to provision web servers using the Web\_Server vDisk. The engineer needs to create a target device and add the device to Active Directory.

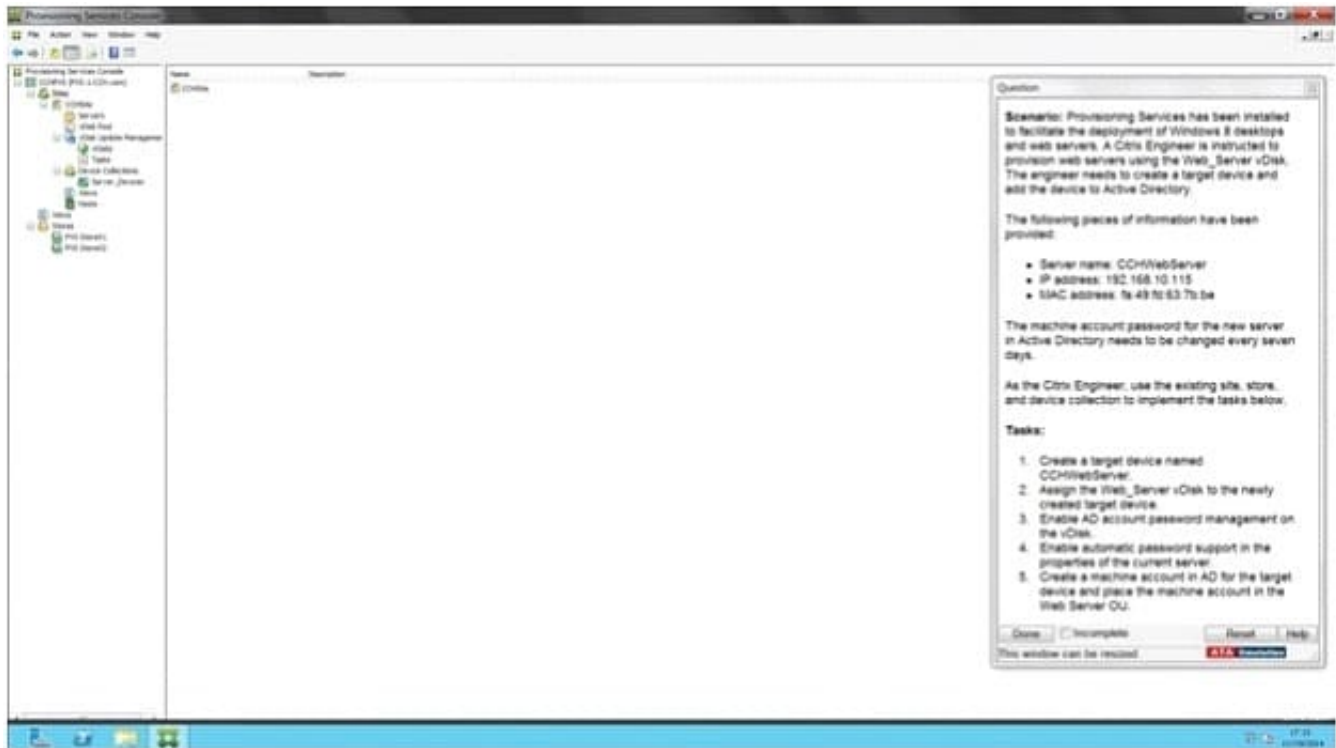
The following pieces of information have been provided:

Server name: CCHWebServer IP address: 192.168.10.115 MAC address: fa:49:fd:63:7b:be

The machine account password for the new server in Active Directory needs to be changed every seven days. As the Citrix Engineer, use the existing site, store, and device collection to implement the tasks below.

Tasks:

1.  
Create a target device named CCHWebServer.
2.  
Assign the Web\_Server vDisk to the newly created target device.
3.  
Enable AD account password management on the vDisk.
4.  
Enable automatic password support in the properties of the current server.
5.  
Create a machine account in AD for the target device and place the machine account in the Web Server OU.



A.

Correct Answer: A Section: (none)

Answer: Find the solution with all steps below.

The wizard is run directly from a Provisioning Services Console. Right-click on the Site icon in the Console tree panel, then select the Streamed VM Setup Wizard... menu option. The Welcome to the Streamed VM Setup Wizard appears.



Click Next to begin the setup.

Select the type of hypervisor (Xenserver per the Simulation) to connect to, then enter the required connection credentials.



The hypervisor information for the environment is:

- XenServer IP Address: 192.168.10.5
- Username: root
- Password: Password1

Click Next to verify the connection. Note: For convenient reuse, the most recently used hypervisor and username will be cached in the registry of the local machine running this instance of the Console. Note: XenServer 5.5 Update 2 hypervisors are not supported in the 5.6.1 Streamed VM Setup Wizard. System Center Virtual Machine Management (SCVMM) servers require PowerShell 2.0 to be installed. Optional. On the Hypervisor cluster screen, select the hypervisor host or cluster to host the VMs, then click Next. Select one VM template from the specified host, then click Next. On the Collection and vDisk page, select the collection in which to add VMs. Select a single shared vDisk within to assign to VMs within that collection, then click Next. Web\_Server vDisk  
uk.co.certification.simulator.questionpool.PList@1669be70

Set the number of VMs to create, the number of vCPUs, and the amount of Memory each new virtual machine will use. 1 VM per the Simulation- CCHWebServer Enable the radio button next to one of the following methods used for adding Active Directory computer accounts, then click Next: Note: An Active Directory administrator will need to delegate rights to the Provisioning Services Console user to allow Active Directory account creation. Note: The domain and OU default to those of the current user. Note: New computer names to be created are first validated that they do not already exist as computers in Active Directory, VMs, or target devices. If the Create new accounts method is selected: Use ?Web Server OU uk.co.certification.simulator.questionpool.PList@16970c10 Review all configuration settings, and then click Next to confirm and finish configurations. Note: Clicking Cancel cancels the configuration of any additional machines, and the quantity of successfully configured machines displays under the Progress bar. If the wizard fails or is cancelled in the middle of an operation, any progress made is retained. If cleanup of existing progress is required, it must be done manually, which includes removing the following: uk.co.certification.simulator.questionpool.PList@16970da0

---

### QUESTION 3

#### CORRECT TEXT

Scenario: A Citrix Engineer must provide users at CCH headquarters with Windows 8 virtual desktops.

These users will access hosted applications through Receiver. Personalization of the Windows 8 virtual desktops is required.

Note: The registry settings on the master image and the Virtual Delivery Agent have already been configured to allow the simultaneous use of profile management and Personal vDisk.

Tasks:

1.

Create the appropriate machine catalog and name it XD\_PVDISK1.

2.

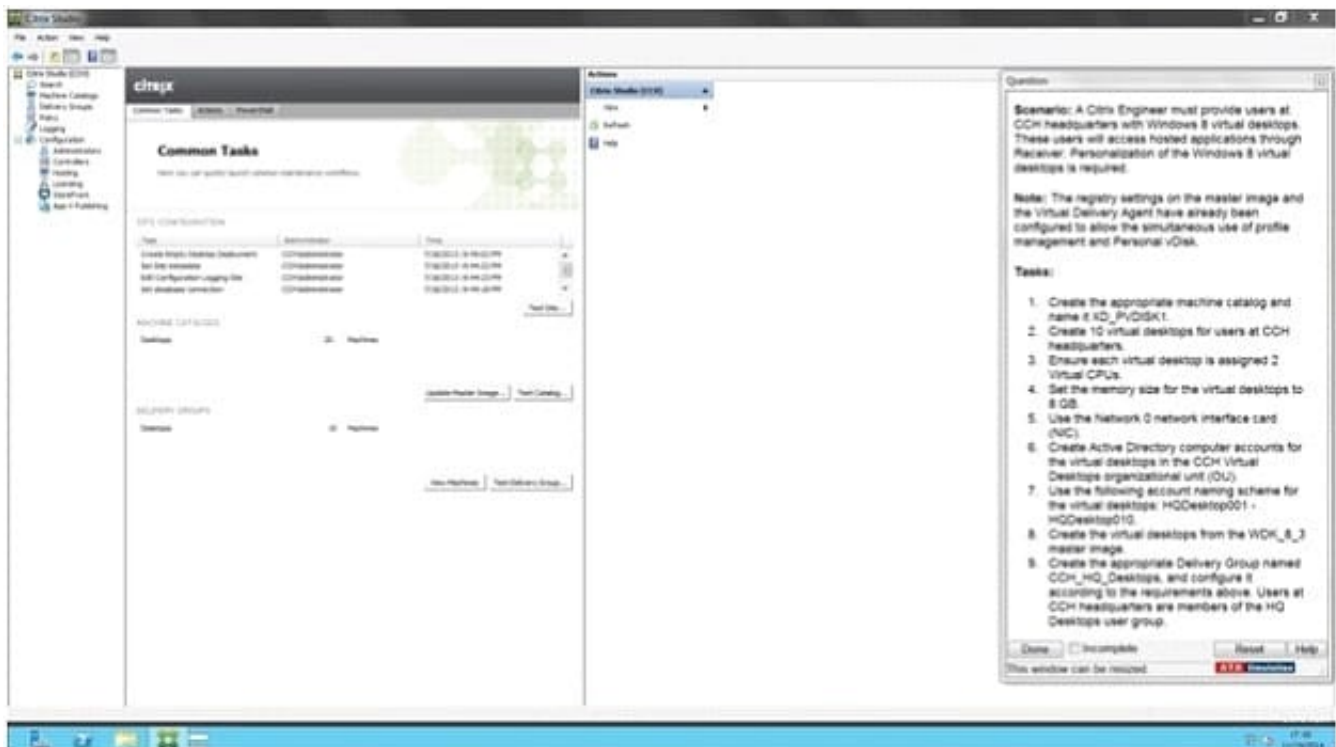
Create 10 virtual desktops for users at CCH headquarters.

3.

Ensure each virtual desktop is assigned 2 Virtual CPUs.



4.  
Set the memory size for the virtual desktops to 8 GB.
5.  
Use the Network 0 network interface card (NIC).
6.  
Create Active Directory computer accounts for the virtual desktops in the CCH Virtual Desktops organizational unit(OU).
7.  
Use the following account naming scheme for the virtual desktops: HQDesktop001 ?HQDesktop010.
8.  
Create the virtual desktops from the WDK\_8\_3 master image.
9.  
Create the appropriate Delivery Group named CCH\_HQ\_Desktops, and configure it according to the requirements above. Users at CCH headquarters are members of the HQ Desktops user group.

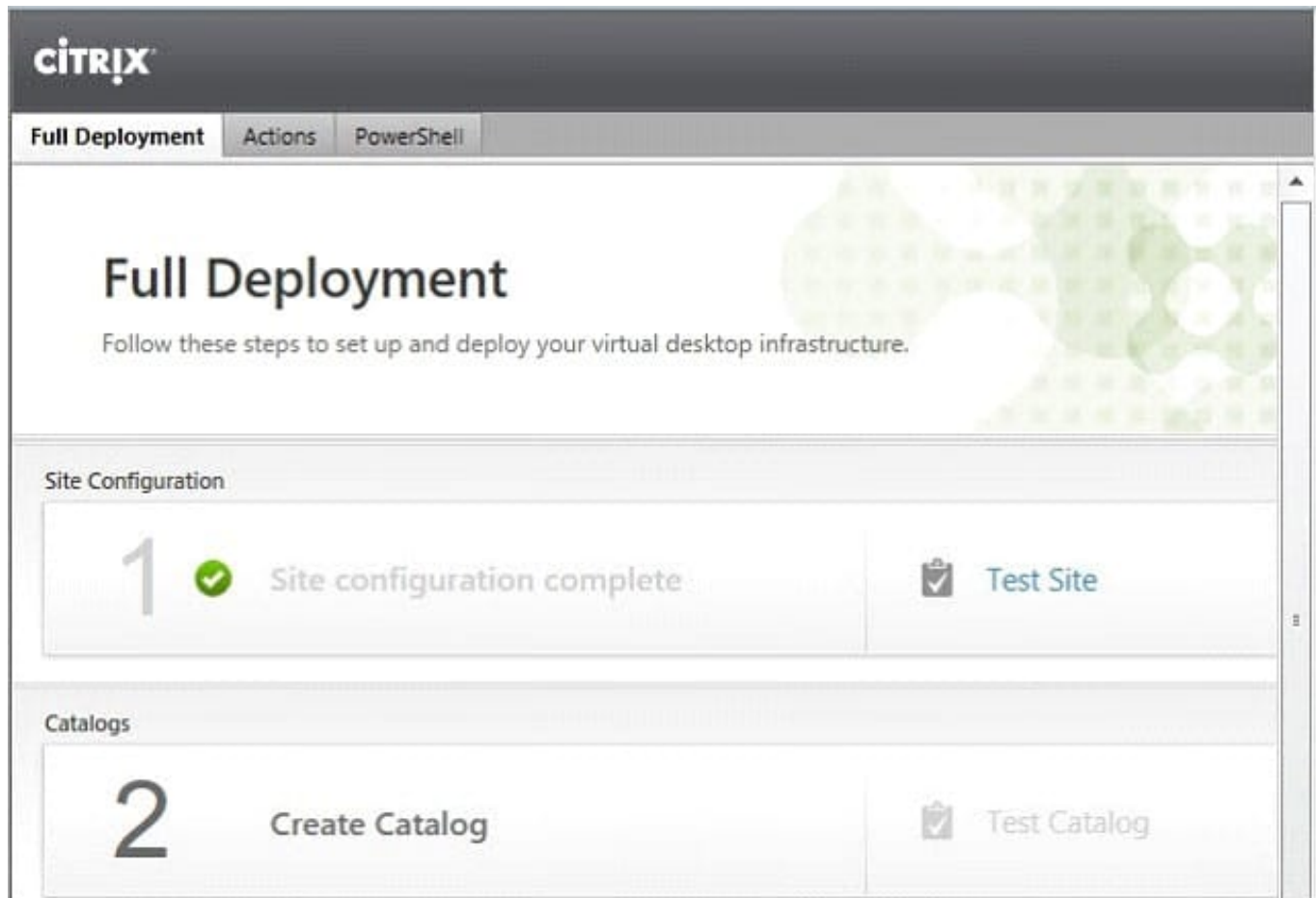


A.  
Correct Answer: A Section: (none)

Answer: Find the solution with all steps below. XenDesktop 7 Machine Catalog



1. In Desktop Studio we want to create a VM catalog,



2. Choose the OS type

### Operating System and Hardware

We want to help you create the correct type of Machine Catalog by asking a few questions to provide a recommendation

[Learn more](#)

Select an operating system and machine type for this Machine Catalog.

- ☒ Windows Desktop OS  
The Desktop OS Machine Catalog provides VDI desktops ideal for a variety of different users.
- ☐ Windows Server OS  
The Server OS Machine Catalog provides hosted shared desktops for a large-scale deployment of standardized machines.
- ☐ Remote PC Access  
The Remote PC Access Machine Catalog provides users with remote access to their physical office desktops, allowing them to work at any time.

3. We will be using VMs and Citrix Machine Creation Services, so the defaults are fine. 4. Use the default





## Machine Management

As part of creating a Machine Catalog, the way you plan to provision machines influences the recommended Machine Catalog type.

[Learn more](#)

This infrastructure will be built using:

- ☒ Virtual machines
- ☐ Physical hardware

Desktop images are managed using:

- ☒ Machine Creation Services (MCS)
- ☐ Provisioning Services (PVS)
- ☐ Another service or technology  
I will manage my desktop images with something other than Citrix technology. I have existing Master Images already prepared.

## Desktop Experience

Consider the tasks your users perform and then decide which desktop experience would be best.

Which desktop experience do you want users to have?

- ☒ I want users to connect to a new (random) desktop each time they log on.
- ☐ I want users to connect to the same (static) desktop each time they log on.

Do you want to save any changes that the user makes to the desktop?

- ☒ Yes, save changes on a separate Personal vDisk.
- ☐ Yes, create a dedicated virtual machine and save changes on the local disk.
- ☐ No, discard all changes and clear virtual desktops when the user logs off.  
If configured, folder redirection will not be affected.

5.

Choose the master image

6.

A great feature of XenDesktop is the ability to customize the catalog hardware at provisioning time, so you can offer different tiers of VMs from the exact same master image. No need to build up templates with the same OS and software stack, just to customize the vCPUs and memory specs.

7.

OU ?

C:\Users\Chaudhry\Desktop\1.jpg



8.

On the summary screen you need to give the catalog a name and a description.

9.

After you kick off the provisioning process you get a nice status. MCS first makes a copy of your master VM, then does its magic to create copies

10.

When the provisioning is completed you now have one machine catalog entry

11.

If you double click on the machine catalog it will bring up a search window with the individual VMs listed. You can now power them on and wait for them to show a "registered" status. If you click on an individual VM it will pull up even more details. If a user had an active session to the VM then you get a plethora more data.

WDK\_8\_3 master image.

### Master Image

Select a Host and corresponding Virtual Machine or snapshot from the list to create a Master Image.

Select a Resource:

VDI

Select a snapshot (or a Virtual Machine):



☐ The Master Image is built using Windows XP or Windows Vista

You should also select this option if the snapshot or Master Image is running Windows 7 with VDA 5.6





**Virtual Machines**

Number of virtual machines:  - +

**Configure your machines:**

Name:	D001-Win702
Virtual CPUs:	<input type="text" value="1"/> - +
Memory (MB):	<input type="text" value="2048"/> - +
Hard disk (GB):	<input type="text" value="26"/> - +

Annotations:

- Make this 10 (points to Number of virtual machines)
- Make this 2 (points to Virtual CPUs)
- Make this 8192 MB to allot 8 GB Memory (points to Memory)

## CCH Virtual Desktops

Machine Names –

HQDesktop001 - HQDesktop010

### Active Directory Computer Accounts

Each machine in a Machine Catalog needs a corresponding Active Directory computer account.

[Learn more](#)

Select an Active Directory account option:

- ☒ Create new Active Directory accounts
- ☐ Use existing Active Directory accounts

Active Directory location for computer accounts:

Domain:

Selected location:

Account naming scheme:

VDI-NS-W7-01



## Summary

Machine type:	Windows Desktop OS
Machine management:	Virtual
Provisioning method:	Machine creation services (MCS)
Desktop experience:	Users connect to a new desktop each time they log on
Resources:	VDI
Master Image name:	D001-Win702 <small>A snapshot of the Master Image VM will be created</small>
Number of VMs to create:	2
Virtual CPUs:	1

Change this per the  
Simulation to XD\_PVDISK1

Machine Catalog name:

Windows 7 x64 - 1 vCPU 2GB

Machine Catalog description for administrators: (Optional)

General purpose Windows 7 x64 VMs

**Note:** To complete the deployment, assign this machine catalog to a Delivery Group by selecting Delivery Groups and then Create or Edit a Delivery Group.

## Studio

Creating Catalog Windows 7 x64 - vCPU 2GB...



Copying the master image.

Hide progress



**CITRIX**

Machine Catalog	Machine type	No. of machines	Allocated machines
Windows 7 x64 - vCPU 2GB	Windows Desktop OS (Virtual)	2	0
Allocation Type: Random      User data: Discard      Provisioning method: Machine creation services			

Details - Windows 7 x64 - vCPU 2GB

Details   Machines   Administrators

Machine Catalog		Machine	
Name:	Windows 7 x64 - vCPU 2GB	Disk Image:	Citrix_XD_Windows 7 x64 - vCPU 2GB
Machine Type:	Windows Desktop OS (Virtual)	Virtual CPUs:	1
Provisioning Method:	Machine creation services	Memory:	2048 MB
Allocation Type:	Random	Hard disk:	26 GB
Resources:	VDI	VDA version:	7.0.0.3018
Scopes:	All	Operating System:	Windows 7 Service Pack 1

**CITRIX**      <Unsaved>      Saved searches

Search results for '(Machine Catalog Is "Windows 7 x64 - vCPU 2GB")'

Name	Machine Catalog	Delivery Gro...	User	Maintenanc...	Persist User...	Power State	Registration...
VDI-NS-W7-01.contoso.net	Windows 7 x6...	-	-	Off	Discard	On	Registered
VDI-NS-W7-02.contoso.net	Windows 7 x6...	-	-	Off	Discard	On	Registered

Details - VDI-NS-W7-01.contoso.net

Details   Administrators

Machine		Session	
Machine:	VDI-NS-W7-01.contoso.net	Current User:	-
Power State:	On	Protocol:	-
Registration:	Registered	Session type:	Desktop
Delivery Group:	-	Time in State:	-
Machine Catalog:	Windows 7 x64 - vCPU 2GB	Client Name:	-
Connection:	vSphere51	Client Address:	-
IP Address:	-	Launched Via IP:	-
Agent Version:	7.0.0.3018	Connected Via:	-
Profile Definition:	-		
StoreFronts:	-		

As you can see, creating a machine catalog from a master template is quick and easy. Within Desktop Studio you can view a tremendous amount of detail about the catalog and individual VMs.

#### QUESTION 4

Scenario: A Citrix Engineer is in the process of deploying load balancing for StoreFront servers using NetScaler. The DNS names of the servers are sf1.mydomain.com and sf2.mydomain.com. The StoreFront URL will be <https://citrix.mydomain.com>.



Which two steps should the engineer take when configuring StoreFront load balancing using NetScaler? (Choose two.)

- A. Create a DNS A record for citrix.mydomain.com for the load balancing VIP.
- B. Configure a NetScaler VIP for SSL and bind a certificate for citrix.mydomain.com to the VIP.
- C. Create a DNS CNAME record for citrix.mydomain.com resolvable to sf1.mydomain.com and sf2.mydomain.com.
- D. Configure a NetScaler VIP for SSL, enable the SNI feature and bind certificates for sf1.mydomain.com and sf2.mydomain.com to the VIP.

Correct Answer: AB Section: (none)

---

#### QUESTION 5

A Citrix Engineer needs to configure a XenDesktop site; however, the engineer does NOT have permissions to access the SQL Server or the SQL database.

What should the engineer do to configure the new XenDesktop site?

- A. Use an Access database instead of a SQL database.
- B. Use the local administrator account for the Delivery Controller.
- C. Ask a database administrator to enable mixed-mode authentication on the SQL database server and relaunch the site configuration wizard.
- D. Generate a SQL database script during the creation of the site and ask a database administrator to run the script directly on the database designated for the new site.

Correct Answer: B Section: (none)

[1Y0-301 Practice Test](#)

[1Y0-301 Study Guide](#)

[1Y0-301 Braindumps](#)