



1Z0-068^{Q&As}

Oracle Database 12c: RAC and Grid Infrastructure Administration

Pass Oracle 1Z0-068 Exam with 100% Guarantee

Free Download Real Questions & Answers **PDF** and **VCE** file from:

<https://www.geekcert.com/1z0-068.html>

100% Passing Guarantee
100% Money Back Assurance

Following Questions and Answers are all new published by Oracle
Official Exam Center

-  **Instant Download** After Purchase
-  **100% Money Back** Guarantee
-  **365 Days** Free Update
-  **800,000+** Satisfied Customers





QUESTION 1

Which statement is true concerning the installation of an Oracle Grid Infrastructure 12c patchset and its status during the installation?

- A. Some grid infrastructure patchsets may not be installed in a rolling fashion.
- B. They can be applied in-place.
- C. When performing rolling patches, crsctl query crs softwareversion always displays the lowest version of the software running anywhere in the cluster
- D. When performing rolling patches, the VIPs for the node being patched are relocated to another node.

Correct Answer: C

Section: (none)

To check the software versions on a single node or if the software version is the latest version installed in on a cluster.

You would use this option when you do the rolling upgrade.

```
$ crsctl query crs softwareversion [hostname]
```

References: https://blogs.oracle.com/myoraclediary/entry/how_to_check_clusterware_version

QUESTION 2

Which three statements are true about Oracle Clusterware components, architecture, and behavior?

- A. The Cluster Ready Services Daemon (CRSD) is responsible for monitoring and maintaining the availability of cluster resources defined in the Oracle Local Repository file (OLR).
- B. All cluster nodes can write or read from the Oracle Clusterware Repository (OCR) file at the same time.
- C. The Oracle High Availability Services Daemon (OHASD) is responsible for monitoring and maintaining the availability of the Clusterware stack on a cluster node.
- D. Voting disks stored in Automatic Storage Management (ASM) can be discovered or used even if the ASM instance on a cluster node is down.
- E. The Cluster Synchronization Services Daemon (CSSD) must connect to the cluster by accessing the Oracle Clusterware Repository (OCR) file before the Oracle High Availability Services Daemon (OHASD) is started.
- F. Time synchronization in an Oracle Cluster is possible without using network Time Protocol (NTP).

Correct Answer: CDF

Section: (none)

F: To activate CTSS in your cluster, you must stop and deconfigure the vendor time synchronization service on all nodes in the cluster. CTSS detects when this happens and assumes time management for the cluster.



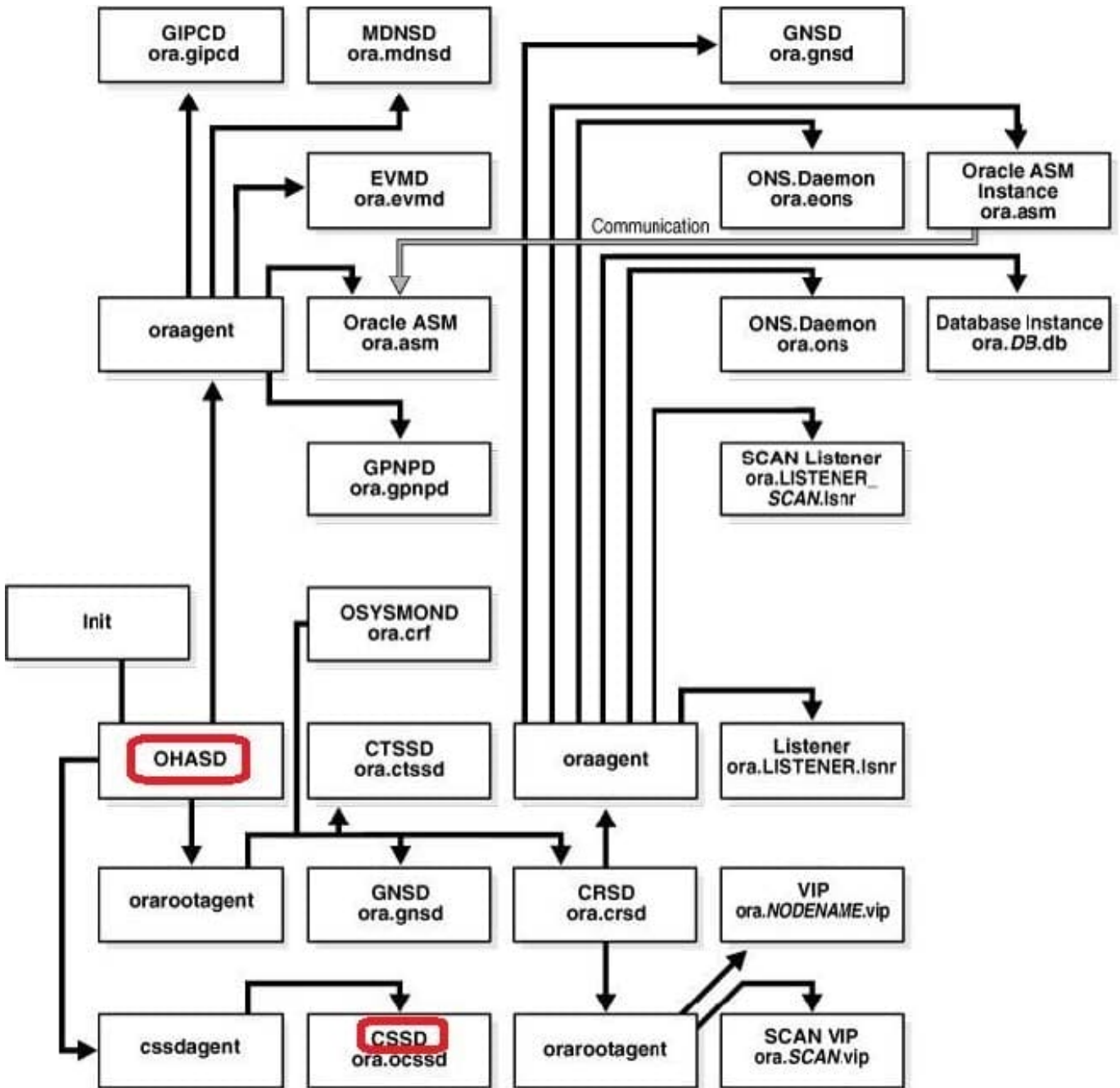
For example, to deconfigure NTP, you must remove or rename the ntp.conf file.

Incorrect Answers:

A: The CRS daemon (crsd) manages cluster resources based on the configuration information that is stored in OCR, not the OLR, for each resource.

B: You must update OCR through supported utilities such as Oracle Enterprise Manager, the Oracle Clusterware Control Utility (CRSCTL), the Server Control Utility (SRVCTL), the OCR configuration utility (OCRCONFIG), or the Database Configuration Assistant (DBCA)

E: Please refer to the cluster startup picture below.



References: https://docs.oracle.com/cd/E11882_01/rac.112/e41959/intro.htm#CWADD90955



QUESTION 3

Which three statements are true concerning the Automatic Workload Repository (AWR) in a RAC environment?

- A. Taking an AWR snapshot in a RAC database captures data from all instances that have the database opened.
- B. Taking an AWR snapshot in a RAC database captures data from the local instance only.
- C. Data captured by an AWR is aggregated across all instances before being stored in the database.
- D. The `awr_snapshot_time_offset` parameter specifies the number of seconds each instance waits after the top of the hour before taking its AWR snapshot.
- E. AWR snapshots are created when `control_management_pack_access` is set to "none"

Correct Answer: ACD

Section: (none)

AWR snapshots are collect at database level.

Oracle extends the AWR tool for RAC databases by adding the possibility to generate snapshots reports against the whole cluster database, some database instances of the cluster database, a specific database instance of the cluster database, statistics for a specific select query.

D: `AWR_SNAPSHOT_TIME_OFFSET` specifies an offset for the AWR snapshot start time. AWR snapshots normally start at the top of the hour (12:00, 1:00, 2:00, and so on). This parameter allows DBAs to specify an offset for the AWR snapshot start time.

Incorrect Answers:

E: `CONTROL_MANAGEMENT_PACK_ACCESS` specifies which of the Server Manageability Packs should be active. The following packs are available: The `DIAGNOSTIC` pack includes AWR, ADDM, and so on.

The `TUNING` pack includes SQL Tuning Advisor, SQLAccess Advisor, and so on.

The `NONE` value means that both packs are not available.

References: <https://docs.oracle.com/cloud/latest/db112/REFRN/initparams018.htm#REFRN10325> <http://www.oracle-class.com/?p=2409>

QUESTION 4

Which two statements are true regarding ASM Dynamic Volume manager (ADVM)?

- A. To create an ADVM volume, disk group attributes `COMAPTIBLE.ASM` and `COMPATIBLE.ADVM` must be minimally set to 12.1.
- B. An ADVM volume is individually named and can contain only one file system.
- C. Only one ADVM volume can be created in an ASM disk group.



- D. ADVM extends ASM by providing a device driver interface to storage backed by an ASM disk group.
- E. File systems contained in ADVM volumes may only contain database files.

Correct Answer: BD

Section: (none)

B: Each volume is individually named and may be configured for a single file system.

D: Oracle ADVM extends Oracle ASM by providing a disk driver interface to Oracle ASM storage allocated as Oracle ADVM volume files.

Reference: <https://docs.oracle.com/database/121/OSTMG/GUID-B7A61F3B-C22A-4021-A846-F5EA749E79FF.htm#OSTMG32000> (See Note and the third para from the top.)

QUESTION 5

Which task must be performed before running the OPatch utility to patch Oracle Grid Infrastructure 12c?

- A. Update the PATH environment variable on each cluster node to point to the \$ORACLE_HOME/OPatch directory.
- B. Stage the patch on the cluster node where the OPatch utility will be executed.
- C. Update the PATH environment variable on the node where will run the OPatch utility to point to the directory. \$ORACLE_HOME/OPatch
- D. Stage the patch on the cluster nodes.

Correct Answer: C

Section: (none)

[1Z0-068 PDF Dumps](#)

[1Z0-068 VCE Dumps](#)

[1Z0-068 Braindumps](#)