



1Z0-068^{Q&As}

Oracle Database 12c: RAC and Grid Infrastructure Administration

Pass Oracle 1Z0-068 Exam with 100% Guarantee

Free Download Real Questions & Answers **PDF** and **VCE** file from:

<https://www.geekcert.com/1z0-068.html>

100% Passing Guarantee
100% Money Back Assurance

Following Questions and Answers are all new published by Oracle
Official Exam Center

-  **Instant Download** After Purchase
-  **100% Money Back** Guarantee
-  **365 Days** Free Update
-  **800,000+** Satisfied Customers





QUESTION 1

PROD1, PROD2, and PROD3 are three Instance that have the PROD database open.

The OLTP service was created using:

```
$ srvctl add service -db prod -service OLTP -preferred PROD1, PROD2 -available PROD3
```

After starting the OLTP service, you execute this command:

```
$ srvctl stop instance -db prod -instance " PROD1, PROD2 " -stopoption immediate -f
```

Which statement is true about the outcome of this command?

- A. It shuts down PROD1 and PROD2; OLTP will be started automatically on PROD3.
- B. It shuts down PROD1 and PROD2; OLTP will not be started on PROD3.
- C. PROD1and PROD2 are not shut down because OLTP must first be stopped.
- D. PROD1and PROD2 are not shut down because OLTP must first be manually relocated to PROD3.
- E. It shuts down either PROD1or PROD2 but not both, so that OLTP remains available on a preferred instance.

Correct Answer: AD

Section: (none)

QUESTION 2

Which two statements are true regarding ASM Dynamic Volume manager (ADVM)?

- A. To create an ADVM volume, disk group attributes COMAPTIBLE.ASM and COMPATIBLE.ADVM must be minimally set to 12.1.
- B. An ADVM volume is individually named and can contain only one file system.
- C. Only one ADVM volume can be created in an ASM disk group.
- D. ADVM extends ASM by providing a device driver interface to storage backed by an ASM disk group.
- E. File systems contained in ADVM volumes may only contain database files.

Correct Answer: BD

Section: (none)

B: Each volume is individually named and may be configured for a single file system.

D: Oracle ADVM extends Oracle ASM by providing a disk driver interface to Oracle ASM storage allocated as Oracle ADVM volume files.

Reference: <https://docs.oracle.com/database/121/OSTMG/GUID-B7A61F3B-C22A-4021-A846-F5EA749E79FF.htm#OSTMG32000> (See Note and the third para from the top.)



QUESTION 3

Which two statements are true about the UNDROP clause of the ALTER DISKGROUP statement?

- A. It cancels pending drops of disks dropped using the DROP DISKGROUP command.
- B. A disk cannot be undropped as a result of a drop diskgroup.
- C. It automatically unmounts the disks after successfully undropping them.
- D. It is not possible to cancel pending drops of disks dropped using the force option.

Correct Answer: BD

Section: (none)

The UNDROP DISKS clause of the ALTER DISKGROUP statement cannot be used to restore disks that are being dropped as the result of a DROP DISKGROUP statement, or for disks that are being dropped using the FORCE clause.

Reference: https://docs.oracle.com/cd/B28359_01/server.111/b31107/asmdiskgrps.htm

QUESTION 4

Which three are characteristics of leaf nodes in an Oracle Clusterware 12c Flex Cluster? (Choose three.)

- A. They can be on a different subnet to the hub nodes.
- B. Grid Naming Service (GNS) must exist on one of the leaf nodes.
- C. They discover hub nodes automatically at startup.
- D. They require direct access to shared storage.
- E. They may discover hub nodes without having the DNS delegation configured by network.
- F. Oracle database 12c RAC instances may not run on leaf nodes.

Correct Answer: DEF

Section: (none)

QUESTION 5

Which three statements are true about Oracle Clusterware components, architecture, and behavior?

- A. The Cluster Ready Services Daemon (CRSD) is responsible for monitoring and maintaining the availability of cluster resources defined in the Oracle Local Repository file (OLR).
- B. All cluster nodes can write or read from the Oracle Clusterware Repository (OCR) file at the same time.
- C. The Oracle High Availability Services Daemon (OHASD) is responsible for monitoring and maintaining the availability



of the Clusterware stack on a cluster node.

D. Voting disks stored in Automatic Storage Management (ASM) can be discovered or used even if the ASM instance on a cluster node is down.

E. The Cluster Synchronization Services Daemon (CSSD) must connect to the cluster by accessing the Oracle Clusterware Repository (OCR) file before the Oracle High Availability Services Daemon (OHASD) is started.

F. Time synchronization in an Oracle Cluster is possible without using network Time Protocol (NTP).

Correct Answer: CDF

Section: (none)

F: To activate CTSS in your cluster, you must stop and deconfigure the vendor time synchronization service on all nodes in the cluster. CTSS detects when this happens and assumes time management for the cluster.

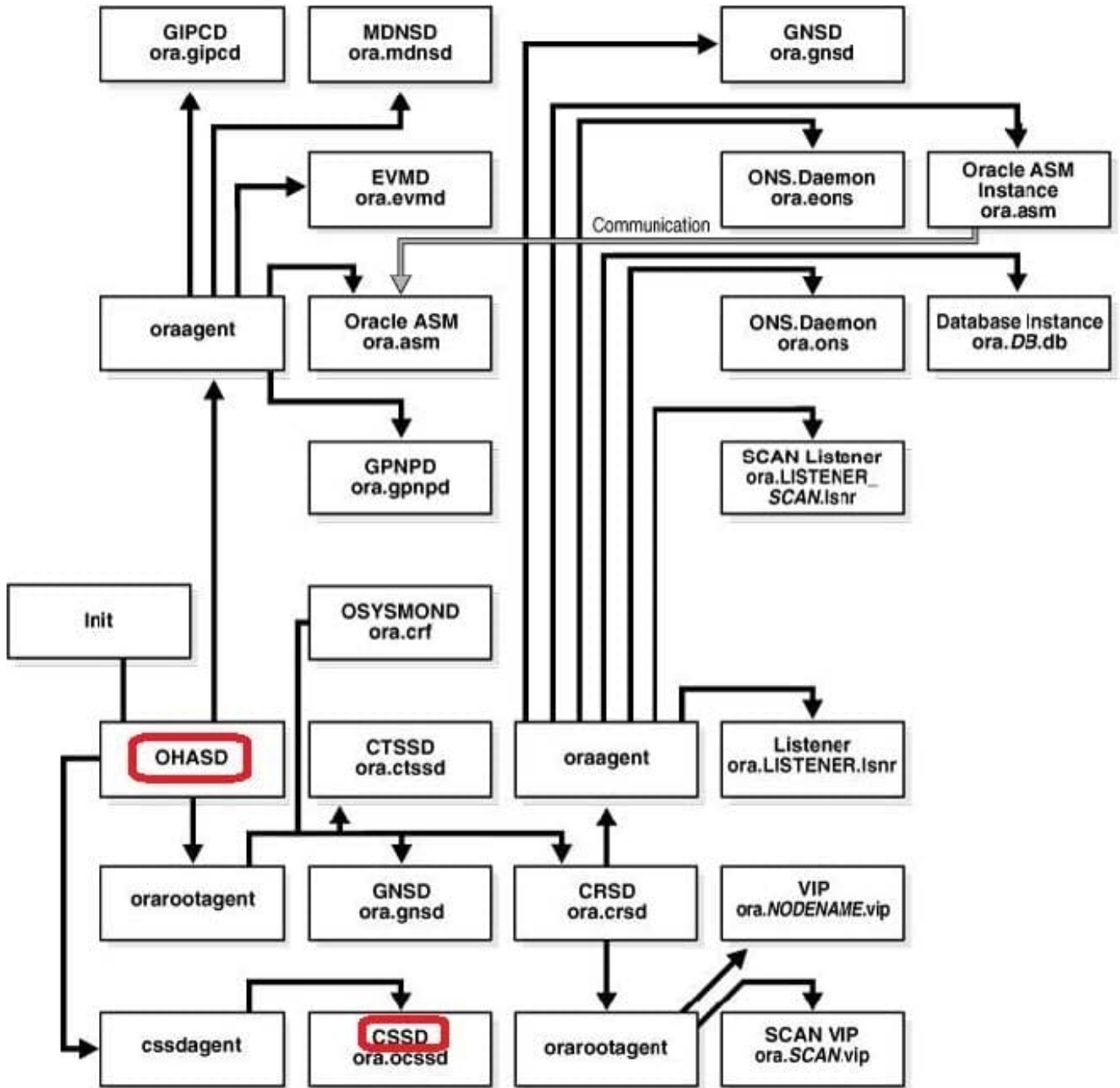
For example, to deconfigure NTP, you must remove or rename the ntp.conf file.

Incorrect Answers:

A: The CRS daemon (crsd) manages cluster resources based on the configuration information that is stored in OCR, not the OLR, for each resource.

B: You must update OCR through supported utilities such as Oracle Enterprise Manager, the Oracle Clusterware Control Utility (CRSCTL), the Server Control Utility (SRVCTL), the OCR configuration utility (OCRCONFIG), or the Database Configuration Assistant (DBCA)

E: Please refer to the cluster startup picture below.



References: https://docs.oracle.com/cd/E11882_01/rac.112/e41959/intro.htm#CWADD90955

[Latest 1Z0-068 Dumps](#)

[1Z0-068 Practice Test](#)

[1Z0-068 Study Guide](#)