



1Z0-141^{Q&As}

Oracle9i forma Developer:build internet applications

Pass Oracle 1Z0-141 Exam with 100% Guarantee

Free Download Real Questions & Answers **PDF** and **VCE** file from:

<https://www.geekcert.com/1Z0-141.html>

100% Passing Guarantee
100% Money Back Assurance

Following Questions and Answers are all new published by Oracle
Official Exam Center

-  **Instant Download** After Purchase
-  **100% Money Back** Guarantee
-  **365 Days** Free Update
-  **800,000+** Satisfied Customers





QUESTION 1

An application is accessed through the Summit form, which can open the Customers form and the Orders form. The Customers form can also open the Orders form, and the Orders form can open the Customers form. What should you do to ensure that forms are closed in the proper order so that the session closes down when the last form is exited?

- A. You should keep track of the order of the opening of forms in a global record group. Then in the Key-Exit trigger for each form, you should allow only the last form that was opened to be closed.
- B. You should make sure that the Summit form that started the session is the last one closed by coding its Key-Exit trigger to exit only if no other forms are open.
- C. You do not need to do anything because Forms keeps track of the forms that are opened internally and does not allow the user to close them in the wrong order.
- D. You do not need to do anything. No matter which form is closed last, the session will close properly.

Correct Answer: D

QUESTION 2

You should enable the user to add additional values to a list item at run time. You must also ensure that the Record Group LOCATIONS, which is used to populate the list item, can be updated with any user-supplied value.

What two actions could you take to accomplish this? (Choose two.)

- A. Add a new value to the list item by calling the POPULATE_LIST built-in.
- B. Add a new value to LOCATIONS by calling the POPULATE_GROUP built-in.
- C. Add a new value to the list item by calling the ADD_LIST_ELEMENT built-in.
- D. Remove duplicate values in LOCATIONS by calling the DELETE_LIST_ELEMENT built-in.
- E. Add a new value to LOCATIONS by calling the ADD_GROUP_ROW and SET_GROUP_CHAR_CELL built-ins.
- F. Add a new value to LOCATIONS by calling the ADD_GROUP_ROW and SET_GROUP_NUMBER_CELL built-ins.

Correct Answer: CE

QUESTION 3

View the Exhibit to examine the form.

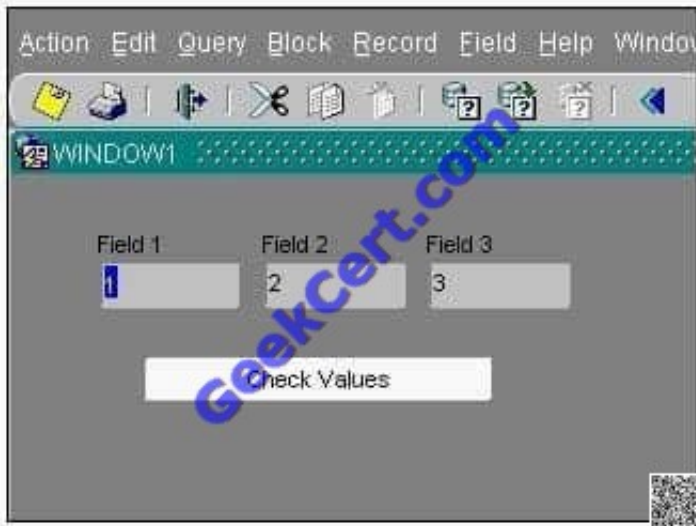
The text items (Field1, Field2, and Field3) and the button (Check_Values) are in the CONTROL block. The Mouse Navigate property of the button has been set to No.



The following code has been written in a When-Button-Pressed trigger on the Check_Values button:

```
MESSAGE(:field1||\ - \\\:SYSTEM.cursor_item||  
\ - \\\:SYSTEM.trigger_item);
```

With the focus in Field1, and the values 1, 2 and 3 in the text items, what message will be displayed when the button is pressed?



- A. -4
- B. 1 - 2 - 3
- C. 1 - field1 - Check Values
- D. field1 - 1 - Check Values
- E. 1 - CONTROL.FIELD1 - CONTROL.FIELD1
- F. 1 - CONTROL.FIELD1 - CONTROL.CHECK_VALUES
- G. :field1 - :SYSTEM.cursor_item - :SYSTEM.trigger_item

Correct Answer: F

QUESTION 4

View the Exhibit.

The Credit_Rating item in the Customers block of an Order Entry form must be restricted to three possible values: Good, Poor, or Null (the latter value indicates that the credit rating has not been determined). Order entry clerks must be able to update this item to any of these three values.

You want to change the item to a check box labeled "Credit Risk" that should be selected if the customer has poor credit. The check box should not be selected if the customer's credit rating is good or undetermined.



You change the item type to Check Box and set other properties as shown in the exhibit, then run your form and insert three records: two with good credit and the check box clear, and one with poor credit and the check box selected. You commit the data and query the records, with the following result set:

CUST_ID LAST_NAME FIRST_NAME CREDIT_RATING -----
1001 Gamer Pam 1002 Wallace Sheila 1003 Maslen Glenn Poor

The first two records show an undetermined credit rating, although your intention was to set the value to Good for those customers. What change must you make in the properties of the Credit_Rating item to enable values of Good, Poor, and Null to be entered?

Label	Credit Risk
Access Key	
Implementation Class	
Value when Checked	Bad
Value when Unchecked	Good
Check Box Mapping of Other Values	Unchecked
Popup Menu	<Null>
Navigation	
Keyboard Navigable	Yes
Mouse Navigate	Yes
Previous Navigation Item	<Null>
Next Navigation Item	<Null>
Data	
Data Type	Char
Data Length Semantics	BYTE
Maximum Length	4
Initial Value	

- A. Change the Initial Value property to Good.
- B. Change the Check Box Mapping of Other Values property to Not Allowed.
- C. Change the Initial Value property to Good and the Value When Unchecked property to Null.
- D. Change the Initial Value property to Good and the Check Box Mapping of Other Values property to Null.
- E. Change the Initial Value property to Good and the Check Box Mapping of Other Values property to Checked.
- F. Change the item type. It is not appropriate to use a check box to enable entry and update of more than two values in an item.

Correct Answer: F

QUESTION 5

You are developing a Human Resources form for HR clerks to insert, update, and delete records from the EMPLOYEES



table. You are also maintaining an audit table with the following table description:

```
SQL> desc audit_changes
```

Name Null? Type

----- TABLE_NAME VARCHAR2 (30)

ID NUMBER

TIMESTAMP DATE

CHANGE_BY VARCHAR2 (30)

CHANGE_TYPE VARCHAR2 (6)

Valid values for the CHANGE_TYPE column are INSERT, UPDATE, and DELETE.

Which trigger(s) must you create or modify in the Human Resources form to track all the information in the audit table?

- A. Post-Commit
- B. Post-Database-Commit
- C. When-Validate-Record
- D. Post-Insert, Post-Update and Post-Delete
- E. You cannot accomplish this using Forms triggers; you must use a database trigger.

Correct Answer: D

[1Z0-141 PDF Dumps](#)

[1Z0-141 Practice Test](#)

[1Z0-141 Study Guide](#)



To Read the [Whole Q&As](#), please purchase the [Complete Version](#) from [Our website](#).

Try our product !

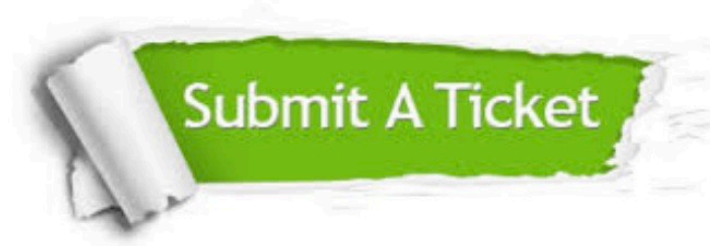
- 100% Guaranteed Success
- 100% Money Back Guarantee
- 365 Days Free Update
- Instant Download After Purchase
- 24x7 Customer Support
- Average 99.9% Success Rate
- More than 800,000 Satisfied Customers Worldwide
- Multi-Platform capabilities - [Windows](#), [Mac](#), [Android](#), [iPhone](#), [iPod](#), [iPad](#), [Kindle](#)

We provide exam PDF and VCE of Cisco, Microsoft, IBM, CompTIA, Oracle and other IT Certifications. You can view Vendor list of All Certification Exams offered:

<https://www.geekcert.com/allproducts>

Need Help

Please provide as much detail as possible so we can best assist you.
To update a previously submitted ticket:



 <p>One Year Free Update Free update is available within One Year after your purchase. After One Year, you will get 50% discounts for updating. And we are proud to boast a 24/7 efficient Customer Support system via Email.</p>	 <p>Money Back Guarantee To ensure that you are spending on quality products, we provide 100% money back guarantee for 30 days from the date of purchase.</p>	 <p>Security & Privacy We respect customer privacy. We use McAfee's security service to provide you with utmost security for your personal information & peace of mind.</p>
---	---	--

Any charges made through this site will appear as Global Simulators Limited.
All trademarks are the property of their respective owners.
Copyright © geekcert, All Rights Reserved.