



1Z0-478^{Q&As}

Oracle SOA Suite

Pass Oracle 1Z0-478 Exam with 100% Guarantee

Free Download Real Questions & Answers **PDF** and **VCE** file from:

<https://www.geekcert.com/1Z0-478.html>

100% Passing Guarantee
100% Money Back Assurance

Following Questions and Answers are all new published by Oracle
Official Exam Center

-  **Instant Download** After Purchase
-  **100% Money Back** Guarantee
-  **365 Days** Free Update
-  **800,000+** Satisfied Customers





QUESTION 1

Identify two service components that can be added to the components section of the SOA Composite Editor.

- A. Database adapter
- B. BPEL process
- C. File adapter
- D. Business rule
- E. ADF-BC service

Correct Answer: BD

QUESTION 2

What element first executes the iterative activity and then checks the validity of the condition?

- A. Switch
- B. While
- C. Repeat Until
- D. For Each

Correct Answer: C

If the body of an activity must be performed at least once, use a repeatUntil activity instead of a while activity. The XPath expression condition in the repeatUntil activity is evaluated after the body of the activity completes. The condition is evaluated repeatedly (and the body of the activity processed) until the provided boolean condition is true.

QUESTION 3

Consider a scenario where Oracle B2B receives messages from different trading partners that need to be placed in separate folders after processing. For example, messages received from trading partner Marketing need to be processed and placed in a file folder called "Marketing" after processing. Messages received from trading partner GlobalChips need to be processed and placed in a file Folder named "GlobalChips" after processing.

Which approach enables this to work?

- A. There should be two different trading partner agreements, with each agreement using a different host channel depending on which folder the processed file needs to be placed in.
- B. There should be two different trading partner agreements, with each agreement using a different partner channel depending on which folder the processed file needs to be placed in.
- C. There should be one trading partner agreement, but there should be two different listening channels depending on which folder the file needs to be placed in.



D. This functionality cannot be achieved In Oracle B2B natively and needs to be implemented using a Java callout.

Correct Answer: B

Note:

*

Agreements that include document definitions for restricted document types cannot be modified or exported.

*

Listening channels are used globally. You do not need to select a listening delivery channel in an agreement. Listening channels are used for any trading partner to send inbound messages to Oracle B2B or for any back-end business application to send outbound messages to Oracle B2B.

*

Oracle B2B is an e-commerce gateway that enables the secure and reliable exchange of business documents between an enterprise and its trading partners. Oracle B2B supports business-to-business document standards, security, transports, messaging services, and trading partner management. With Oracle B2B used as a binding component within an Oracle SOA Suite composite application, end-to-end business processes can be implemented.

QUESTION 4

Which statement best describes deploying your SOA application to a cluster?

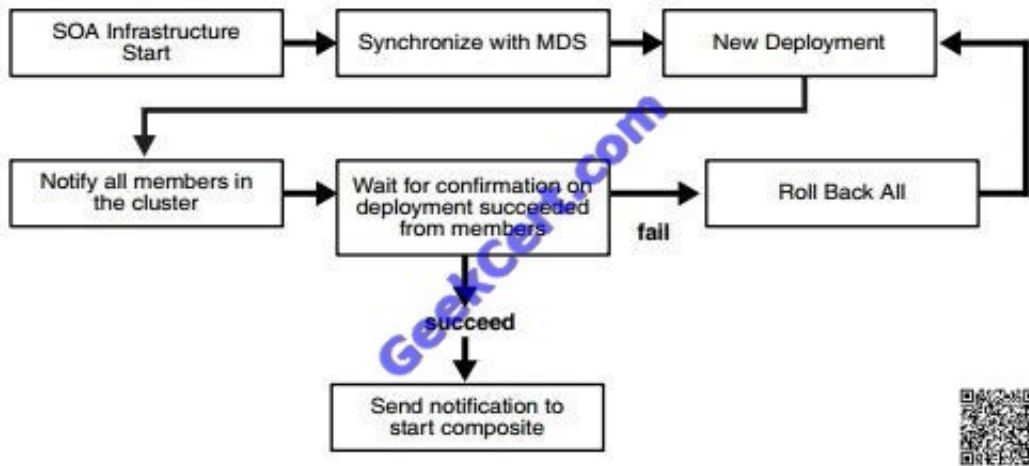
- A. Manually deploy the application to each managed server in the cluster.
- B. After deployment, restart each managed server in the cluster before the application is available for service.
- C. Use WebLogit Server Administration Console for deployment because you cannot deploy to a cluster from JDeveloper.
- D. Treat your cluster as a single deployment target and let the administration server automatically deploy the application to all managed servers in the cluster.

Correct Answer: D

Note:

* Oracle SOA Service Infrastructure Cluster-Wide Deployment Composite deployments are stored centrally by the SOA Service Infrastructure in the MDS repository. Each time the SOA Service Infrastructure is started, it synchronizes itself with the MDS repository and SOA store to get the deployment and process state. The deployment coordinator infrastructure orchestrates the notifications for composites deployments and updates. When a new deployment or update takes place, deployment coordinator notifies all members in the cluster. When all members in the cluster confirm that the deployment has succeeded, the master sends a notification to start the composite. If a deployment fails on any one of the nodes, it is rolled back to the rest of the cluster

* Figure: Cluster-Wide Deployment of Oracle SOA Composites



QUESTION 5

When more than one policy is attached to a policy subject, the combination of policies needs to be valid. Which statement is true about the valid combination of policies for a policy subject?

- A. Only one MTOM policy can be attached to a policy subject.
- B. More than one Reliable Messaging policy can be attached to a policy subject.
- C. Both a Reliable Messaging policy and a WS-Addressing policy cannot be attached to the same policy subject.
- D. Only one security policy can be attached to a policy subject.

Correct Answer: A

Note:

*

Within a SOA composite application, you must attach the Oracle WS-MTOM policy to service and reference binding components to receive and send MTOM (MIME binary) attachments within Oracle SOA Suite.

*

Message Transmission Optimization Mechanism (MTOM)

Ensures that attachments are in MTOM format. This format enables binary data to be sent to and from web services. This reduces the transmission size on the wire.

*

Reliability Policy

Supports the WS-Reliable Messaging protocol. This guarantees the end-to-end delivery of messages.

*

Addressing Policy



Verifies that simple object access protocol (SOAP) messages include WS-Addressing headers in conformance with the WS-Addressing specification. Transport-level data is included in the XML message rather than relying on the network-level transport to convey this information.

[1Z0-478 PDF Dumps](#)

[1Z0-478 Study Guide](#)

[1Z0-478 Braindumps](#)



To Read the [Whole Q&As](#), please purchase the [Complete Version](#) from [Our website](#).

Try our product !

100% Guaranteed Success

100% Money Back Guarantee

365 Days Free Update

Instant Download After Purchase

24x7 Customer Support

Average 99.9% Success Rate

More than 800,000 Satisfied Customers Worldwide

Multi-Platform capabilities - [Windows](#), [Mac](#), [Android](#), [iPhone](#), [iPod](#), [iPad](#), [Kindle](#)

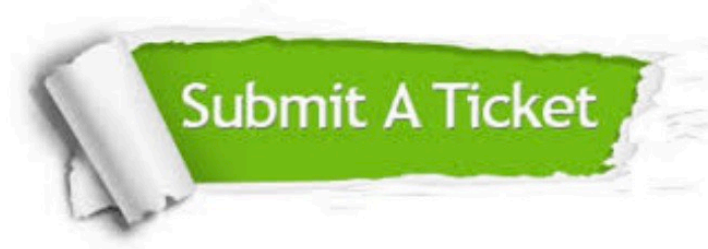
We provide exam PDF and VCE of Cisco, Microsoft, IBM, CompTIA, Oracle and other IT Certifications. You can view Vendor list of All Certification Exams offered:

<https://www.geekcert.com/allproducts>

Need Help

Please provide as much detail as possible so we can best assist you.

To update a previously submitted ticket:



 <p>One Year Free Update Free update is available within One Year after your purchase. After One Year, you will get 50% discounts for updating. And we are proud to boast a 24/7 efficient Customer Support system via Email.</p>	 <p>Money Back Guarantee To ensure that you are spending on quality products, we provide 100% money back guarantee for 30 days from the date of purchase.</p>	 <p>Security & Privacy We respect customer privacy. We use McAfee's security service to provide you with utmost security for your personal information & peace of mind.</p>
---	---	--

Any charges made through this site will appear as Global Simulators Limited.

All trademarks are the property of their respective owners.

Copyright © geekcert, All Rights Reserved.