



1Z0-478^{Q&As}

Oracle SOA Suite

Pass Oracle 1Z0-478 Exam with 100% Guarantee

Free Download Real Questions & Answers **PDF** and **VCE** file from:

<https://www.geekcert.com/1Z0-478.html>

100% Passing Guarantee
100% Money Back Assurance

Following Questions and Answers are all new published by Oracle
Official Exam Center

-  **Instant Download** After Purchase
-  **100% Money Back** Guarantee
-  **365 Days** Free Update
-  **800,000+** Satisfied Customers





QUESTION 1

Each JCA adapter has a single deployment listed in the WLS Console. Identify two accurate descriptions about managing multiple instances of each adapter in the runtime.

- A. Instance configuration in the SOA Suite deployment plan
- B. JCA tiles for each adapter instance
- C. Adapter connection factories specified in the WLS Console
- D. One entry per adapter instance in the adapters_config.xml file

Correct Answer: AD

* The Oracle Database Adapter is a JCA 1.5 connector, which is deployed to the application server during installation.

The Oracle Database Adapter consists of multiple instances; each instance represents a connection to a database end point. Different SOA processes may point to the same adapter instance (database), while different service endpoints in a

SOA process may point to different adapter instances (databases). Because each adapter instance points to a single database, there is a one-to-one correspondence from adapter instances to application server data sources. Out of the box

there is a single Oracle Database Adapter instance named eis/DB/SOADemo, which points to the data source jdbc/SOADDataSource.

The list of adapter instances is stored in a deployment descriptor file, weblogic-ra.xml on Oracle WebLogic Server. (It is inside of DbAdapter.rar, which contains also the Java class files in DBAdapter.jar). Configuring an Oracle Database

Adapter instance is more about creating the underlying data source:

getting the correct JDBC driver and connection URL.

QUESTION 2

In your solution, a web service client needs to invoke a series of three web services in support of a single transaction. The third web service needs the identity of the original web service client.

Which statement describes how the identity is made available by Oracle Web Services Manager (OWSM)?

- A. The transaction manager accesses an internal table that maintains credentials used to invoke each individual web service in the chain.
- B. Each web service in the chain does its own authentication so the third web service handles its own identity checking.
- C. OWSM sets the user in the Java Authentication and Authorization (JAAS) Subject when the first web service successfully authenticates, and the Java Subject is used by subsequent web services to access the identity.
- D. OWSM stores a SAML token from the first web service invocation in a database table, and that table is accessed by subsequent web services in the chain to retrieve identity.



Correct Answer: C

Propagating Identities through a Chain of Web Services

A web service may invoke another web service which in turn may invoke yet another web service to complete a single transaction (this pattern is known as "chained web services"). Each of the services in the chain may be protected. Instead of checking which service is calling which other service, Oracle WSM allows you to check who the original user invoking the chain of Web services is. Oracle WSM policies can be used to propagate the original user's identity across the chained web services. Following successful authentication to the first web service in the chain, Oracle WSM sets the user as a Java Subject used throughout the transaction. When invoking another service, the Oracle WSM client policy picks up the user identity from the Java Subject, generates a SAML token based on the Subject's information, and inserts the SAML token in the WS-Security header of the request message to be sent to the service provider. This allows all the web services in a chain to track the identity of the actual user calling a web service endpoint instead of having the identity of the prior service in the chain calling the first web service to get that information.

Reference: Securing Web Services and Service-Oriented Architectures with Oracle Web Services Manager 11g, Oracle White Paper

QUESTION 3

Which activity is used to invoke a human task from a BPEL process?

- A. Invoke
- B. Human task
- C. Task
- D. Invoke human task
- E. Start human task

Correct Answer: A

Note:

*

Activities are the building blocks of a BPEL process service component. Oracle BPEL Designer includes a set of activities that you drag into a BPEL process service component. You then double-click an activity to define its attributes

(property values). Activities enable you to perform specific tasks within a BPEL process service component. For example, here are several key activities:

/ An assign activity enables you to manipulate data, such as copying the contents of one variable to another.

/ An invoke activity enables you to invoke a service (identified by its partner link) and specify an operation for this service to perform.

/ A receive activity waits for an asynchronous callback response message from a service.

*

Invoking a human task from a BPEL process is a two-step process:



1.
Creating a human task.
2.
Wiring and invoking the human task from BPEL.

QUESTION 4

Which statement best describes deploying your SOA application to a cluster?

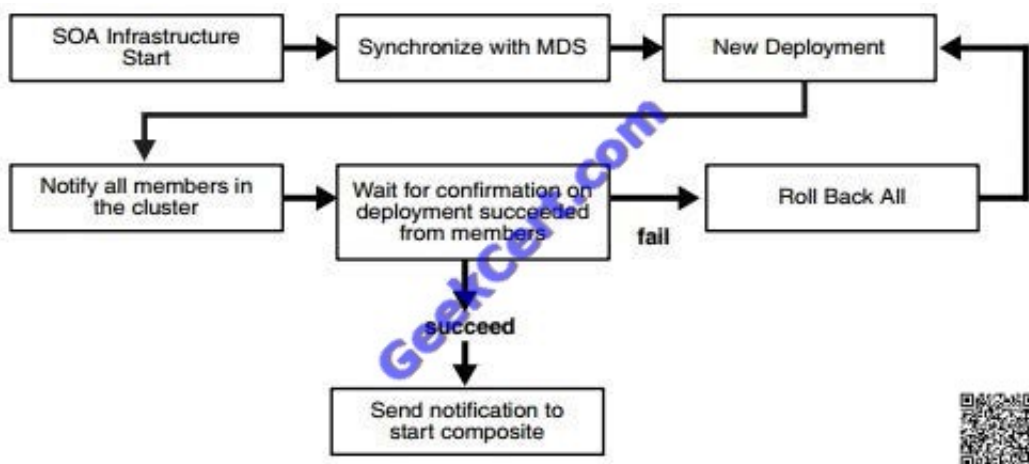
- A. Manually deploy the application to each managed server in the cluster.
- B. After deployment, restart each managed server in the cluster before the application is available for service.
- C. Use WebLogit Server Administration Console for deployment because you cannot deploy to a cluster from JDeveloper.
- D. Treat your cluster as a single deployment target and let the administration server automatically deploy the application to all managed servers in the cluster.

Correct Answer: D

Note:

* Oracle SOA Service Infrastructure Cluster-Wide Deployment Composite deployments are stored centrally by the SOA Service Infrastructure in the MDS repository. Each time the SOA Service Infrastructure is started, it synchronizes itself with the MDS repository and SOA store to get the deployment and process state. The deployment coordinator infrastructure orchestrates the notifications for composites deployments and updates. When a new deployment or update takes place, deployment coordinator notifies all members in the cluster. When all members in the cluster confirm that the deployment has succeeded, the master sends a notification to start the composite. If a deployment fails on any one of the nodes, it is rolled back to the rest of the cluster

* Figure: Cluster-Wide Deployment of Oracle SOA Composites



QUESTION 5



Which statement best describes deploying your SOA application to a cluster?

- A. Manually deploy the application to each managed server in the cluster.
- B. After deployment, restart each managed server in the cluster before the application is available for service.
- C. Use WebLogit Server Administration Console for deployment because you cannot deploy to a cluster from JDeveloper.
- D. Treat your cluster as a single deployment target and let the administration server automatically deploy the application to all managed servers in the cluster.

Correct Answer: D

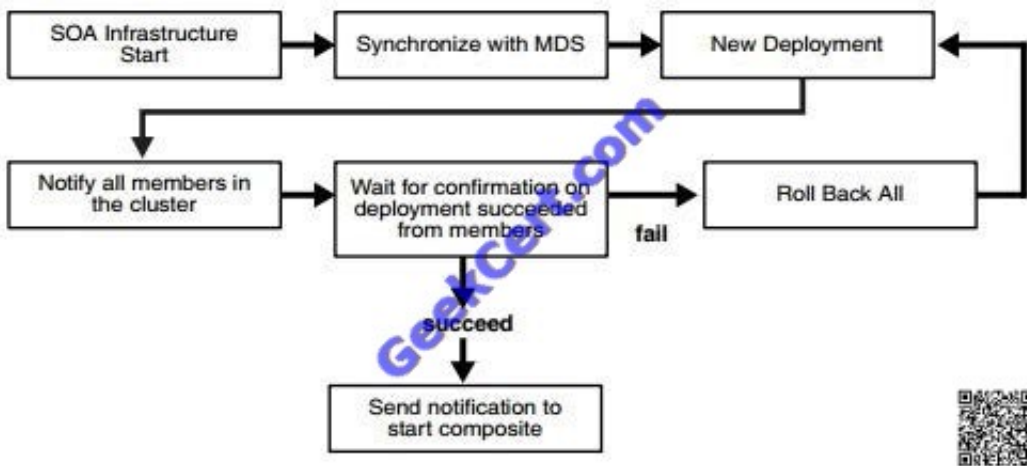
Note:

*

Oracle SOA Service Infrastructure Cluster-Wide Deployment Composite deployments are stored centrally by the SOA Service Infrastructure in the MDS repository. Each time the SOA Service Infrastructure is started, it synchronizes itself with the MDS repository and SOA store to get the deployment and process state. The deployment coordinator infrastructure orchestrates the notifications for composites deployments and updates. When a new deployment or update takes place, deployment coordinator notifies all members in the cluster. When all members in the cluster confirm that the deployment has succeeded, the master sends a notification to start the composite. If a deployment fails on any one of the nodes, it is rolled back to the rest of the cluster

*

Figure: Cluster-Wide Deployment of Oracle SOA Composites



[1Z0-478 PDF Dumps](#)

[1Z0-478 Study Guide](#)

[1Z0-478 Braindumps](#)



To Read the [Whole Q&As](#), please purchase the [Complete Version](#) from [Our website](#).

Try our product !

- 100% Guaranteed Success
- 100% Money Back Guarantee
- 365 Days Free Update
- Instant Download After Purchase
- 24x7 Customer Support
- Average 99.9% Success Rate
- More than 800,000 Satisfied Customers Worldwide
- Multi-Platform capabilities - [Windows](#), [Mac](#), [Android](#), [iPhone](#), [iPod](#), [iPad](#), [Kindle](#)

We provide exam PDF and VCE of Cisco, Microsoft, IBM, CompTIA, Oracle and other IT Certifications. You can view Vendor list of All Certification Exams offered:

<https://www.geekcert.com/allproducts>

Need Help

Please provide as much detail as possible so we can best assist you.
To update a previously submitted ticket:



 <p>One Year Free Update Free update is available within One Year after your purchase. After One Year, you will get 50% discounts for updating. And we are proud to boast a 24/7 efficient Customer Support system via Email.</p>	 <p>Money Back Guarantee To ensure that you are spending on quality products, we provide 100% money back guarantee for 30 days from the date of purchase.</p>	 <p>Security & Privacy We respect customer privacy. We use McAfee's security service to provide you with utmost security for your personal information & peace of mind.</p>
---	---	--

Any charges made through this site will appear as Global Simulators Limited.
All trademarks are the property of their respective owners.
Copyright © geekcert, All Rights Reserved.