



1Z0-533^{Q&As}

Oracle Hyperion Planning 11 Essentials

Pass Oracle 1Z0-533 Exam with 100% Guarantee

Free Download Real Questions & Answers **PDF** and **VCE** file from:

<https://www.geekcert.com/1z0-533.html>

100% Passing Guarantee
100% Money Back Assurance

Following Questions and Answers are all new published by Oracle
Official Exam Center

-  **Instant Download** After Purchase
-  **100% Money Back** Guarantee
-  **365 Days** Free Update
-  **800,000+** Satisfied Customers





QUESTION 1

Identify the true statements regarding Supporting Detail. Select all that apply.

- A. Importing Supporting Detail from Excel is supported.
- B. Supporting Detail must be entered cell by cell; entry for multiple columns at once is not possible
- C. Supporting Detail can contain a hierarchy with an aggregation of values for that hierarchy.
- D. Supporting Detail can be viewed using the Smart View Add-in Essbase Provider.
- E. Supporting Detail is stored in Essbase.

Correct Answer: ACDE

A: To add supporting detail that calculates values in a data form:

- 1 Open a data form in Excel,
- 2 In the data form, select the data cells for which you want to add detail.
- 3 Select Hyperion > Supporting Detail. For Office 2007, click Supporting Detail in the Task section of the Hyperion ribbon.
- 4 Etc.
7. Enter data for the items for which you want to set or calculate values.

When you enter numbers into the Supporting Detail window, use the scaling that was set up for the data values in the data form.

- 8 Click OK.

Values are dynamically calculated and aggregated before the data is saved.

C: Supporting detail can include text, values, and operators that define how data aggregates.

Supporting detail also provides a way to drill down into data to better understand its basis. For example, if the bottom-level member in your outline is pens, you can add line items in supporting detail for ballpoint, fountain, marker, and so on. Then you can aggregate the detail values to the pen member in the outline.

D: Oracle Hyperion Smart View for Office (Excel, PowerPoint, Word, and Outlook), are some of the various Oracle tools that enable users to interact with an Oracle Essbase application.

Oracle Hyperion Smart View for Office (Smart View) is a component of Hyperion Foundation Services. Smart View provides a common Microsoft Office interface designed specifically for Oracle's Enterprise Performance Management (EPM) and Business Intelligence (BI). Using Smart View, you can view, import, manipulate, distribute and share data in Microsoft Excel, Word and PowerPoint interfaces. It is a comprehensive tool for accessing and integrating EPM and BI content from Microsoft Office products.

E: In Planning applications, when you delete supporting detail for a cell, you affect the associated value in the relational database. You specify how to handle the stored Essbase value.

Note (on A and E): To synchronize supporting detail with Essbase:



- 1 Open a data form in Excel
 - 2 In the data form, click the cell that has the supporting detail you want to remove.
 - 3 Select Hyperion > Supporting Detail. For Office 2007, click Supporting Detail in the Task section of the Hyperion ribbon.
 - 4 In the Supporting Detail window, delete the information, then click OK.
 - 5 Select an option from the displayed message to specify how to handle the aggregate value of the deleted supporting detail stored in Essbase:

To delete the value from Essbase, click Yes, set the value(s) to #Missing.

To leave the data value in Essbase as is, click No, leave the value(s) as is.
-

QUESTION 2

Planning utilizes which type of database to store data (for example, "the numbers")?

- A. Block Storage Option Essbase database
- B. Aggregate Storage Option Essbase database
- C. Relational database
- D. XOLAP database
- E. Proprietary database

Correct Answer: A

Since version 7, Essbase has supported two "storage options" (BSO and ASO) which take advantage of sparsity to minimize the amount of physical memory and disk space required to represent large multidimensional spaces. The Essbase

patent describes the original method, which aimed to reduce the amount of physical memory required without increasing the time required to look up closely-related values. With the introduction of alternative storage options, marketing

materials called this the Block Storage Option (Essbase BSO), later referred to as

Essbase Analytics.

(BSO) enables driver-based scenario modeling, forecasting, and predictive analytic applications.

Note: To give you our idea of the ideal application of ASO and BSO,;

ASO Database: The ASO database is ideal for dynamically built Essbase cubes that are usually Read Only and used for reporting, presentation, and analysis. This type of database would also tend to have a rather large outline where at least

one dimension has a significant amount of members. A parts dimension or product dimension comes to mind. Behind this ASO database would be a large BSO parent Essbase database, from which the dynamic ASO databases are built on



the fly.

BSO Database: The BSO database is ideal for virtually any size cube, but where performance is not necessarily the number one priority. Accuracy and completeness of data would be the main consideration. The BSO database is ideal as the

large parent database where users from many different departments can trigger jobs which will dynamically build ASO reporting cubes on an as needed basis. The typical BSO database is ideally suited for financial analysis applications.

QUESTION 3

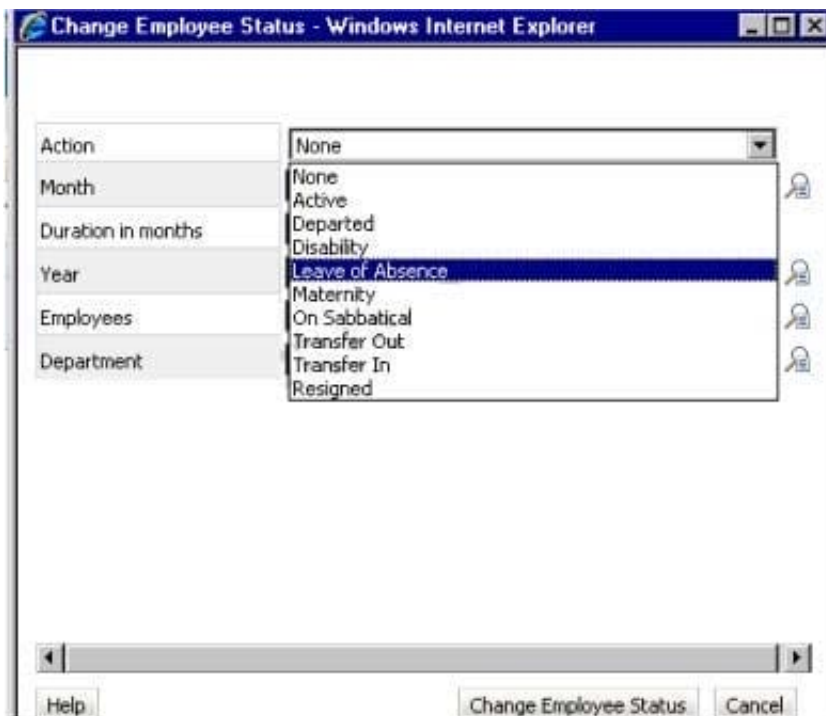
In the Workforce Planning module, an employee is terminated.

What two activities do you perform in WFP, so that total salary numbers are correctly calculated?

- A. Run a business rule to change the employee's status.
- B. Change the employee's status on a data form using the Smart List drop down.
- C. Change the employee's status on a data form using the free form text measure.
- D. Change the employee status attribute association in the Employee dimension.
- E. Delete the employee from Workforce Planning.

Correct Answer: AB

You can change the status of the Employee through options from a Drop down/Smart List on a data form by running a Business Rule.



Incorrect answer:



Deleting the employee is a bad praxis. It would remove old salary entries.

You do not access the attributes directly on the Employee dimension.

Note: The Workforce Planning Module for Hyperion Planning provides a robust set of calculations and pre-defined web-forms that allows organizations to track and budget down to the benefit-level for each employee.

QUESTION 4

Identify two true statements about the DATAEXPORT calc script command.

- A. Using DATAEXPORT within the FIX statement of a calc script allows you to export specific data sets from an Essbase database.
- B. DATAEXPORT only exports level zero data.
- C. DATAEXPORT only exports to flat files.
- D. DATAEXPORT only exports entire data blocks.
- E. DATAEXPORT is faster than Essbase Report.

Correct Answer: AE

A: To develop a calculation script that exports a subset of data, you first specify the SET DATAEXPORTOPTIONS command to define options for export content, format, and process Use FIX...ENDFIX or EXCLUDE...ENDEXCLUDE calculations to select a slice of the database and use a DATAEXPORTCOND command to select data based on data values.

Note: The DATAEXPORT command enables calculation scripts to export data in binary or text, or directly to a relational database. A set of data-export-related calculation commands qualify what data to export and provide various output and

formatting options.

Compared to using other methods to export data, using a calculation script has the following advantages and disadvantages:

Advantages:

Enables exporting a subset of data.

*

Supports multiple targets: flat files, relational databases, and binary files (not B, C, D)

*

Provides many flexible options for type and format or data.

*

As part of a calculation script, can be easily deployed in a batch process.

*



Can be very fast when the dynamic calculation export option is not used because DATAEXPORT directly accesses Kernel storage blocks in memory. (E)

*

Provides, through binary export-import, a faster way to back up and restore data because the compressed format used by binary export requires less storage for the export files.

*

Can be used as a debug tool to trace batch calculation results by using the DATAEXPORT command before and after other calculation commands to track data changes.

Disadvantages

Contains limited data formatting options compared to Report Writer formatting.

QUESTION 5

You need to calculate benefit expense in your Planning application using the following logic:

Benefit expense is equal to the Total Salary of the Organization multiplied by a factor data loaded to each cost center.

Given the following components, what is the correct order of calculation:

1-Custom calculation (Total Salary * Factor)

2-Aggregate benefits

3-Aggregate salaries

A. 1, 2, 3

B. 3, 2, 1

C. 2, 3, 1

D. 3, 1, 2

Correct Answer: D

First calculate the aggregated salaries.

Then make the custom calculation on the salaries.

Finally use the result of the custom calculation to product the benefits.

[1Z0-533 Practice Test](#)

[1Z0-533 Exam Questions](#)

[1Z0-533 Braindumps](#)