



1Z0-567^{Q&As}

Primavera P6 Enterprise Project Portfolio Management 8 Essentials

Pass Oracle 1Z0-567 Exam with 100% Guarantee

Free Download Real Questions & Answers **PDF** and **VCE** file from:

<https://www.geekcert.com/1z0-567.html>

100% Passing Guarantee
100% Money Back Assurance

Following Questions and Answers are all new published by Oracle
Official Exam Center

-  **Instant Download** After Purchase
-  **100% Money Back** Guarantee
-  **365 Days** Free Update
-  **800,000+** Satisfied Customers





QUESTION 1

Identify the true statement regarding the EPS page in P6 R8.

- A. You can copy a project on the EPS page and paste it into another EPS node.
- B. You cannot copy projects on the EPS page - this must still be done in the Client.
- C. Any user can now copy projects on the EPS page regardless of the user's Security profile.
- D. Only application administrators have the privilege to copy/paste projects.

Correct Answer: A

Explanation:

Note:

*

Enterprise Project Structure (EPS)

The EPS is the outsider's view of your company, showing your lines of business. The EPS is laid out in a tree structure.

*

Simply put, "enterprise" means information that is shared across all projects.

EPS / Project Name	EPS ID	Responsible Manager	Original Budget	
EPS: All Initiatives	Enterprise	Enterprise	1,175,000	EPS
EPS: Engineering & Construction	E&C	E&C		EPS
EPS: Energy Services	Energy	Energy		EPS
EPS: Manufacturing	Manufacturing	Manufacturing		EPS
EPS: Product Development	ProdDev	ProdDev		EPS
EPS: Product Program 1	ProdProg1	ProdProg1		EPS
EPS: Product Program 2	ProdProg2	ProdProg2		EPS
EPS: Corporate Programs	Corporate	Corporate		EPS
EPS: In-flight Projects	In-flight	Corporate		EPS
EPS: Proposed Opportunities	Pipeline	IT	1,000,000	EPS
EPS: Information Technology	IT	IT		EPS
EPS: Line of Business 1	LOB 1	LOB 1	10,000,000	EPS
EPS: Line of Business 2	LOB 2	LOB 2	100,000	EPS
EPS: Project Templates	Templates	Enterprise		EPS



QUESTION 2

You are a program manager reviewing portfolio performance data. You see that many issues are assigned to a "responsible manager." What does "responsible manager" mean with Primavera P6 EPPM?

- A. The person responsible for resolving the issue
- B. The person who identified the issue
- C. The element from the OBS associated with the issue
- D. the manager to which the issue has been assigned

Correct Answer: C

Explanation:

Your organization, from top-level personnel down through all levels. You can associate the responsible managers with their areas of the EPS-- either nodes or

individual projects. When you associate a responsible manager with an EPS node, any projects you add to that branch of the EPS are assigned that manager

element by default.

Note: Note: When you associate a responsible manager with an EPS Node, any projects you add to that branch of the EPS are assigned that manager element by

default. When you create a user, you have to give them Responsible Manager assignments in order for them to see projects. Your EPS and your OBS need to have a one-to-one relationship. If you give a user a Responsible Manager assignment (OBS) that is not tied to an EPS, Project or WBS level, they will not see any projects when they log into the Primavera Client application or the Web Application.

QUESTION 3

Identify the true statement regarding project templates.

- A. They are managed using Methodology Manager.
- B. They are managed in the web in the same database.
- C. They are created in the client and managed in the web.
- D. They are created using Project Architect.

Correct Answer: B

Explanation:

Oracle Primavera EPPM 8.0 (also known as P6 Release 8.0 or P6R8) introduces users to Project Templates. In previous versions, Oracle Primavera had

Methodology Manager and Project Manager. Now with P6 R8 (P6R8, P6R8.2) Templates can be easily identify and stored within the Project Management



database. This new feature enables the Project Controls/Project Management Office (PMO) having one single global dictionary for project codes, activity codes,

roles, administration preferences and security profiles.

Note 1: Project templates help you create new projects by providing a common set of project properties and items that can be used to create new projects quickly.

This will allow you to get right to implementing your project plan.

Note 2: Templates Features

Same Graphical User Interface (GUI) Single Application One Global Dictionary Templates within the EPS Hierarchy Re-use existing project data Project setting for Templates Apply partial Template information Template Description Project Codes Same GUI

There is a new Enterprise Project Structure (EPS) view that easily allows the addition of Project Templates.

QUESTION 4

All commands executed by toolbar icons can be accessed from three menus. Select the three menus.

- A. Action
- B. Copy
- C. Edit
- D. Paste
- E. View
- F. Remove
- G. Modify

Correct Answer: ACE

Explanation:

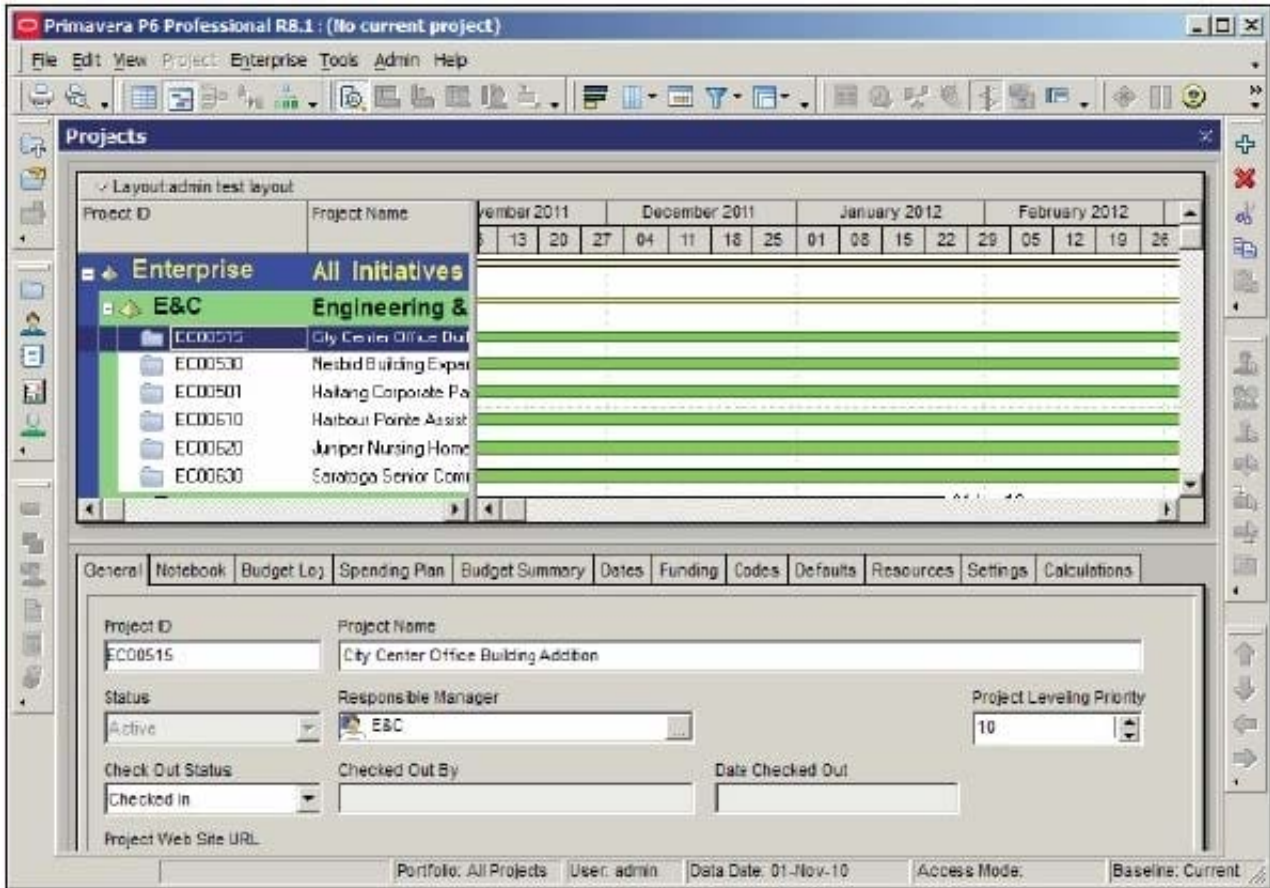
A: Note: To facilitate a streamlined, role-specific configuration of P6 Web Access, your administrator can assign you to a user interface view that corresponds to your role and work processes in your organization. The tabs, tab icons, and action menu items that you can access in each section of P6 Web Access, and the order in which they appear, depend on your user interface view settings

C: The Edit menu is a standard Windows menu that lets you do common actions such as cut, copy, and paste.

E: The View menu is quite extensive, and the items available vary as you view different modules.

Note:

When you log into P6 the first time, you should be presented with a screen similar to the following screenshot:



QUESTION 5

When assigning a user to a user-interface view, deselecting the Allow Editing check box restricts the user's ability to_____.

- A. edit project data in the view
- B. edit the user Interface view
- C. edit his or her password
- D. edit his or her resource profile

Correct Answer: B

Explanation: Creating User Interface Views On the Create User Interface View page, click the Users tab: Select a user from the Available Users window to assign the user to that view. Click Select to move the user to the Selected Users column. Select the Allow Editing option to enable the user to edit the contents of their interface view. Reference; P6 EPPM Administrator's Guide, Creating User Interface Views