



1Z0-567^{Q&As}

Primavera P6 Enterprise Project Portfolio Management 8 Essentials

Pass Oracle 1Z0-567 Exam with 100% Guarantee

Free Download Real Questions & Answers **PDF** and **VCE** file from:

<https://www.geekcert.com/1z0-567.html>

100% Passing Guarantee
100% Money Back Assurance

Following Questions and Answers are all new published by Oracle
Official Exam Center

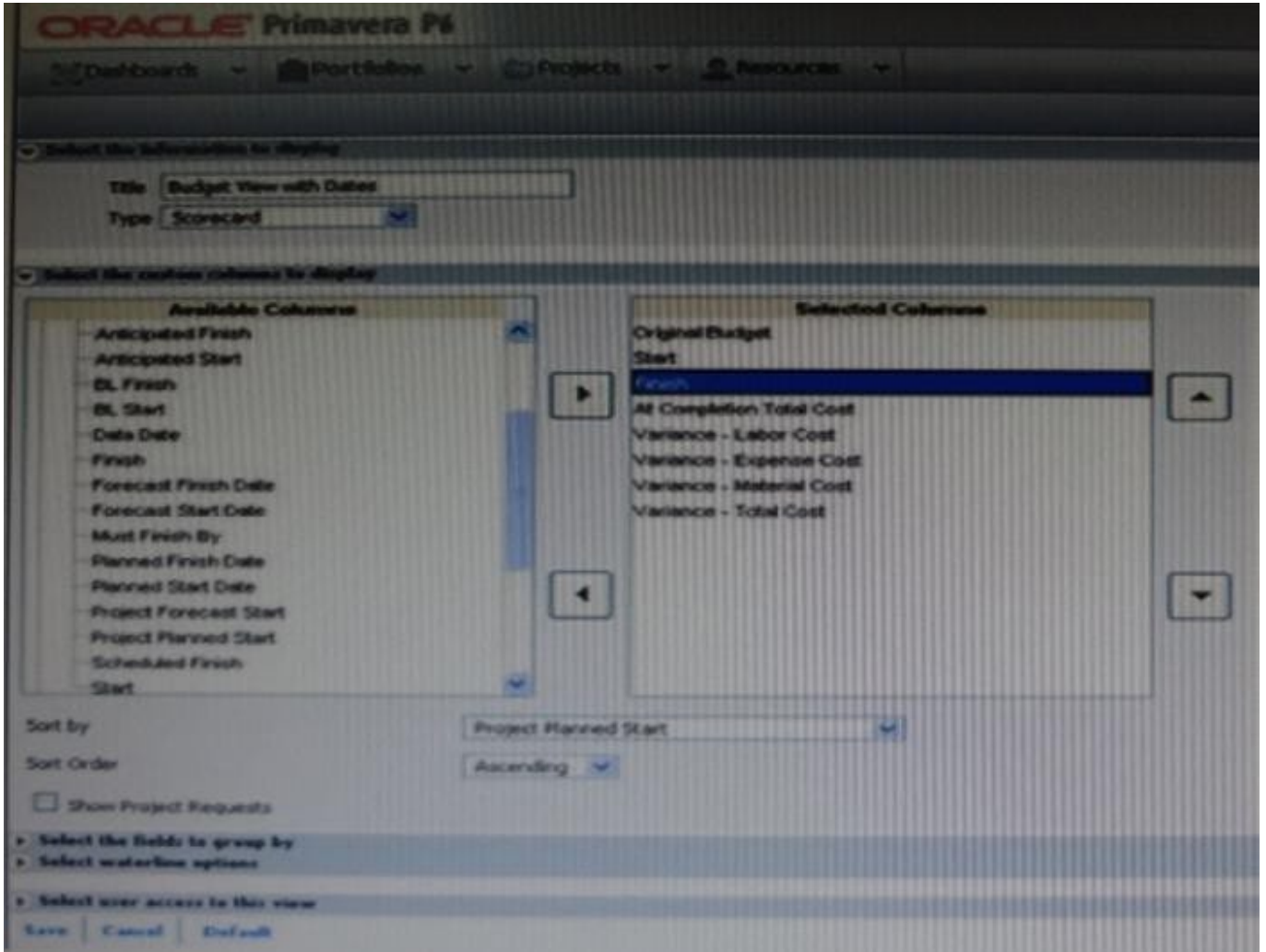
-  **Instant Download** After Purchase
-  **100% Money Back** Guarantee
-  **365 Days** Free Update
-  **800,000+** Satisfied Customers





QUESTION 1

Identify this window.



- A. Create Dashboard
- B. Create Portfolio
- C. Create Portfolio view
- D. Group and Sort

Correct Answer: C

Explanation:

One idea behind Portfolio Analysis in P6 is that it gives you the ability to quickly make ad-hoc reports. You can quickly change the view and alter what data is

displayed and in what form. There are two main kinds of views -- scorecards and graphs.

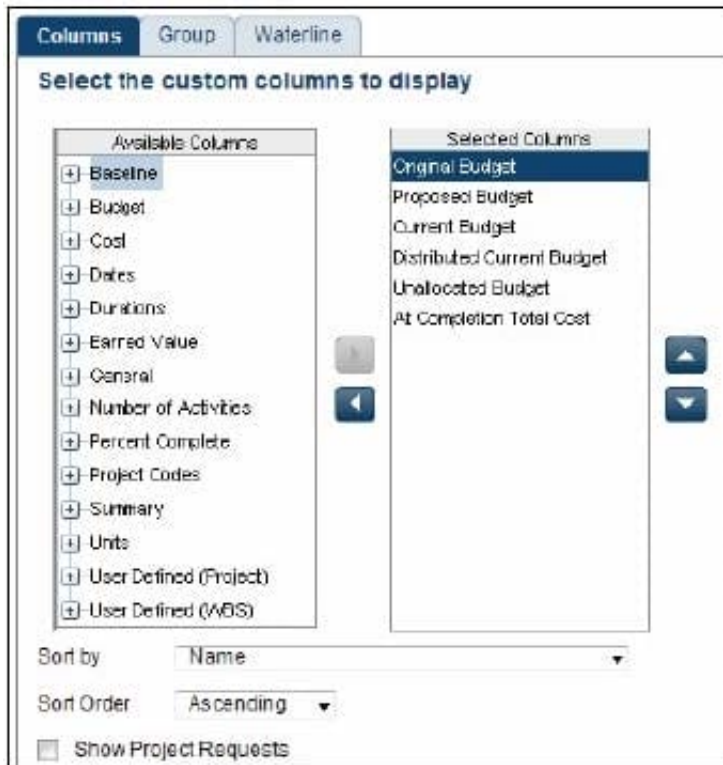


Note: In the context of creating a scorecard:

Choosing data to display

There are three areas that you can customize on a scorecard: Columns, Group, and Waterline.

Screenshot (compare to screenshot in the question):



Columns The columns available are a mixture of Project-level data as well as WBS-level data. You can choose any of these columns on the left-hand side and press the right-arrow to move them to the Selected Columns. On the right-hand side you may re-order the columns by selecting them and using the up and down arrows. You can choose the default sorting of the data as well. Once on the scorecard screen, you can change the order by simply clicking on the column headers. The option Show Project Requests determines whether potential projects should also be included in the scorecard.

QUESTION 2

Identify the true statement regarding currency preferences for viewing currency.

- A. They are globally set and controlled by administrators.
- B. They are managed by an interface to a financial system (FMS).
- C. They are set by individuals in user preferences.
- D. They are permanently set during installation.

Correct Answer: C



Explanation:

*

User Preferences | Currency sets the currency to display in P6, as well as the type of currency symbol and whether to show decimal places.

*

My Preferences offers options for you to customize the data display format across all sections of P6. The options you customize are exclusively yours. You can alter global preferences, including formats for time units, dates, and currencies.

QUESTION 3

Identify two ways of quickly creating templates.

- A. Create a template from an existing project.
- B. Copy/paste existing project into templates node.
- C. User Project Architect to modify templates.
- D. Create complexity formulas to modify templates.
- E. Base a new template on an existing template.

Correct Answer: AE

Explanation:

You can create a template from an existing project, create it from scratch, or create it from another template.

Note: Creating a new project template

As mentioned, you can either create a template from an existing project. From the main menu, choose the Projects tab and click on the Add Project Template icon.

You get the following page:



Primavera P6 - Add Project Template - Mozilla Firefox

http://localhost:7003/p6/action/pm/createproject?type=template&ParentWbsId=3063&ParentWb

General | Advanced

Enter or select values in the required fields (*) below. Optionally choose a project or template to use as the basis for the new template, then click the Advanced tab to choose data types to copy.

Template ID *

Template Name *

Description

EPS *

Responsible Manager *

Copy from existing project or template

Use Actual Costs and Units
 Use Planned Costs and Units

* required fields

Help Create Cancel

Where, Copy from existing project or template: Allows you to create a template based on an existing project or template.

QUESTION 4

What are two benefits of designating a resource as inactive?

- A. All project history and costs are retained.
- B. Budgets from past projects will remain intact.
- C. The associated user's information will be automatically deleted.
- D. Actual costs for past projects will be positively affected.
- E. The resource is identified as unable to perform future work.

Correct Answer: AE



Explanation: Non-active resources may have left the organization but are not deleted from the system since they may have actual hours. Reference: Field Map for Oracle Primavera P6 Reporting Database

QUESTION 5

You received an e-mail from a portfolio manager asking you to check performance metrics for the past months on each of the projects filtered for that portfolio.

You cannot locate the portfolio that the email references.

What is the probable cause?

- A. It is a user portfolio created by the portfolio manager.
- B. It is a user-filtered portfolio that has not been refreshed.
- C. You do not have the appropriate license for the web interface.
- D. You have not been assigned as a resource to the projects.

Correct Answer: B

Explanation:

[1Z0-567 PDF Dumps](#)

[1Z0-567 Exam Questions](#)

[1Z0-567 Braindumps](#)