



1Z0-567^{Q&As}

Primavera P6 Enterprise Project Portfolio Management 8 Essentials

Pass Oracle 1Z0-567 Exam with 100% Guarantee

Free Download Real Questions & Answers **PDF** and **VCE** file from:

<https://www.geekcert.com/1z0-567.html>

100% Passing Guarantee
100% Money Back Assurance

Following Questions and Answers are all new published by Oracle
Official Exam Center

-  **Instant Download** After Purchase
-  **100% Money Back** Guarantee
-  **365 Days** Free Update
-  **800,000+** Satisfied Customers





QUESTION 1

Identify the true statement regarding project templates.

- A. They are managed using Methodology Manager.
- B. They are managed in the web in the same database.
- C. They are created in the client and managed in the web.
- D. They are created using Project Architect.

Correct Answer: B

Explanation:

Oracle Primavera EPPM 8.0 (also known as P6 Release 8.0 or P6R8) introduces users to Project Templates. In previous versions, Oracle Primavera had

Methodology Manager and Project Manager. Now with P6 R8 (P6R8, P6R8.2) Templates can be easily identify and stored within the Project Management

database. This new feature enables the Project Controls/Project Management Office (PMO) having one single global dictionary for project codes, activity codes,

roles, administration preferences and security profiles.

Note 1: Project templates help you create new projects by providing a common set of project properties and items that can be used to create new projects quickly.

This will allow you to get right to implementing your project plan.

Note 2: Templates Features

Same Graphical User Interface (GUI) Single Application One Global Dictionary Templates within the EPS Hierarchy Re-use existing project data Project setting for Templates Apply partial Template information Template Description Project Codes Same GUI

There is a new Enterprise Project Structure (EPS) view that easily allows the addition of Project Templates.

QUESTION 2

You are in a governance organization that has established a project management methodology with work product and document requirements that must be included in every project. You are doing an audit prior to a gate review for a specific project. You are fairly certain that the project manager and project are in compliance with these requirements, but you cannot see the required work products and documents in the project workspace. How can you solve this problem?

- A. Go to Activities and search for the Work Products and Documents by using an Activity view.
- B. Go to a dashboard and look for the Work Products and Documents in a portlet.
- C. Create a global activity code for required Work Products and Documents to call out activities.



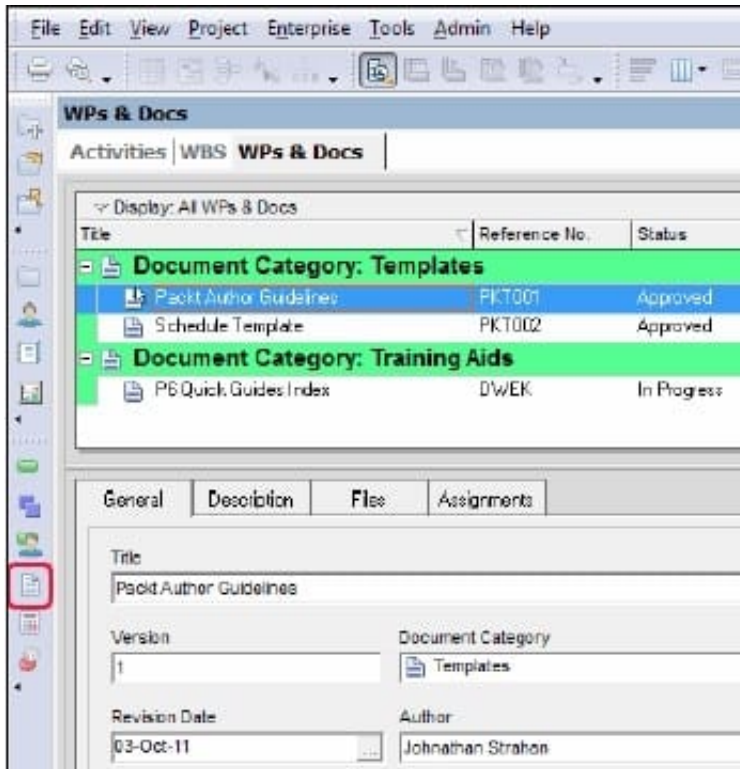
D. Go to the Project section and click Work Products and Documents to view the portlet.

Correct Answer: D

Explanation:

Before you can assign WPs and Docs, you must create them at the project level. On the left-hand toolbar, click on the icon to open up the WPs and Docs window

The WPs and Docs window is shown in the following screenshot:



Here you can add new documents to your project and categorize them. Note: Work Products and Documents (WPs and Docs) allows you to provide documentation for the project. Examples include material safety data sheets, punch lists, specifications, project manager notes and reports, product guides, and more. To add a document, choose Assign, and select the appropriate document. You may

QUESTION 3

Identify three best practice uses of Notebook topics.

- A. To document processes
- B. To explain a constraint
- C. To send out an email alert
- D. To explain baseline update
- E. To change user access



F. To update actual costs

G. To provide status information

Correct Answer: ABG

Explanation:

A, G: The Project Notebooks portlet is where all the project level notebook topics are shown in one location. This is especially helpful if your business process is

consistently used to show reasons for delays, reasons for change orders, or other significant project communications.

B: Primavera has functions, including Notebook, that enables you to note information associated with an activity, including the reasons associated for establishing

a constraint.

Note:

*

Notebook topics are predefined categories in P6 that help to organize your project notes.

*

The notebook topics in Primavera P6 provide team members with a history of all that happened in the project, whether it was a schedule delay due to rain or the

breakdown of equipment.

*

Notebooks exist not only for Projects, but also can be added to any EPS, WBS, or activity. So, for example, you could create a notebook that describes the

purposes and objectives of each WBS element. These notebooks could then be gathered together in a report, which outlines the project by WBS, using the

notebooks as summary paragraphs.

QUESTION 4

Identify two ways of quickly creating templates.

- A. Create a template from an existing project.
- B. Copy/paste existing project into templates node.
- C. User Project Architect to modify templates.
- D. Create complexity formulas to modify templates.
- E. Base a new template on an existing template.



Correct Answer: AE

Explanation:

You can create a template from an existing project, create it from scratch, or create it from another template.

Note: Creating a new project template

As mentioned, you can either create a template from an existing project. From the main menu, choose the Projects tab and click on the Add Project Template icon.

You get the following page:

The screenshot shows a web browser window titled "Primavera P6 - Add Project Template - Mozilla Firefox". The address bar shows the URL: <http://localhost:7003/p6/action/pm/createproject?type=template&ParentWbsId=3063&ParentWb>. The form has two tabs: "General" (selected) and "Advanced".

Instructions: Enter or select values in the required fields (*) below. Optionally choose a project or template to use as the basis for the new template, then click the Advanced tab to choose data types to copy.

Fields and values:

- Template ID *: TEMPLATE001
- Template Name *: City Center Template
- Description: Template Project based on the City Center Office Building Addition
- EPS *: Enterprise
- Responsible Manager *: Enterprise
- Copy from existing project or template: City Center Office Building Addition

Options:

- Use Actual Costs and Units
- Use Planned Costs and Units

* required fields

Buttons: Help, Create, Cancel

Where, Copy from existing project or template: Allows you to create a template based on an existing project or template.

QUESTION 5



Identify the true statement regarding user security profiles.

- A. Only one project security profile can be assigned to each user.
- B. Only one global security profile can be assigned to each user.
- C. A user's web security profile overrides global or project security profiles.
- D. User security profiles are maintained in the client.

Correct Answer: B

Explanation:

To ensure security at various levels of data, the Project Management module provides two sets of security profiles:

*

Global profiles

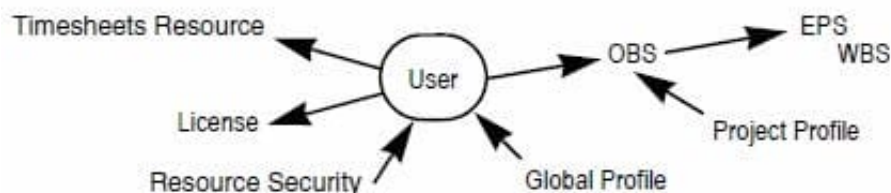
Define a user's access to application-wide

information and settings, such as the enterprise project structure (EPS), resources, roles, and cost accounts. Each user must be assigned a global profile. (B)

*

Project profiles Define a user's access to project-specific information. The Project Management module does not require that each user be assigned a project profile (not A); however, users cannot access projects unless they are assigned a project profile or the global profile, Admin Superuser.

Note 1: The following diagram illustrates the relationships between a user, the OBS, EPS, and WBS.



Note 2: Users in Primavera P6 require two different profiles to control what they can do in the system; a Global Security Profile and a Project Security Profile.

[1Z0-567 PDF Dumps](#)

[1Z0-567 Study Guide](#)

[1Z0-567 Exam Questions](#)