



1Z0-997^{Q&As}

Oracle Cloud Infrastructure 2019 Architect Professional

Pass Oracle 1Z0-997 Exam with 100% Guarantee

Free Download Real Questions & Answers **PDF** and **VCE** file from:

<https://www.geekcert.com/1z0-997.html>

100% Passing Guarantee
100% Money Back Assurance

Following Questions and Answers are all new published by Oracle
Official Exam Center

-  **Instant Download** After Purchase
-  **100% Money Back** Guarantee
-  **365 Days** Free Update
-  **800,000+** Satisfied Customers



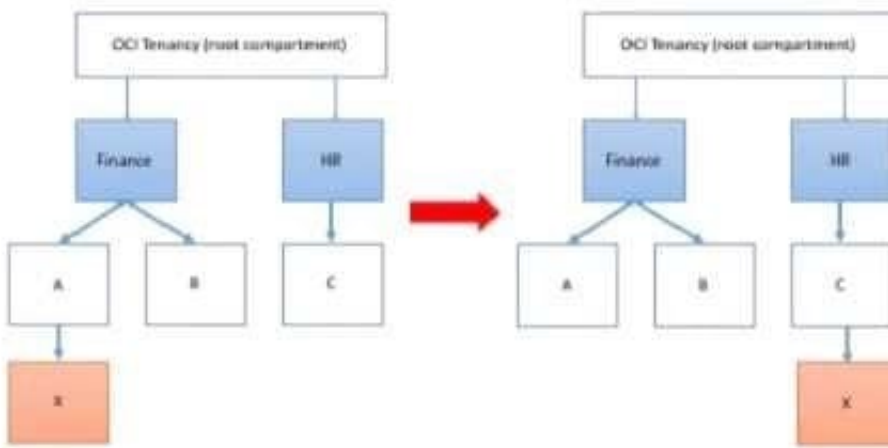


QUESTION 1

Your customer has gone through a recent departmental re structure. As part of this change, they are organizing their Oracle Cloud Infrastructure (OCI) compartment structure to align with the company's new organizational structure.

They have made the following change:

Compartment x is moved, and its parent compartment is now compartment c.



Policy defined in compartment A: Allow group networkadmins to manage subnets in compartment X
Policy defined in root compartment: Allow group admins to read subnets in compartment Finance:A:X
After the compartment move, which action will provide users of group networkadmins and admins with similar privileges as before the move?

- A. Define a policy in Compartment C as follows: Allow group network admins to manage subnets in compartment X.
- B. No change in any policy statement is required as compartments move automatically moves all the policy statements associated with compartments as well.
- C. Define a policy in compartment C as follows: Allow group admins to read subnets in compartment HR:C:X
- D. Define a policy in compartment HR as follows: Allow group network admins to manage subnets in compartment X.
- E. Define a policy in compartment C as follows Allow group admins to read subnets in compartment HR:C:X

Correct Answer: A

You can move a compartment to a different parent compartment within the same tenancy. When you move a compartment, all its contents (subcom partments and resources) are moved with it. After you move a compartment to a new parent compartment, the access policies of the new parent take effect and the policies of the previous parent no longer apply. Before you move a compartment, ensure that:

- You are aware of the policies that govern access to the compartment in its current position.



You are aware of the policies in the new parent compartment that will take effect when you move the compartment. 1- Policy that defined in root compartment: Allow group admins to read subnets in compartment Finance:A:X

you move compartment X from Finance:A to HR:C. The policy that governs compartment X is attached to the shared parent, root compartment. When the compartment X is moved, the policy statement is automatically updated by the IAM service to specify the new compartment location. The policy Allow group admins to read subnets in compartment Finance:A:X

QUESTION 2

You are trying to delete a compartment. The delete operation is failing and you need to troubleshoot the problem.

Which step should NOT be considered when troubleshooting this issue?

- A. Verify that there are no policies in the root compartment that reference the compartment you are trying to delete.
- B. Verify that you have removed all resources from the compartment.
- C. Make sure you have at least one more compartment in your tenancy other than the root compartment.
- D. Search for resources in the compartment for each region that your tenancy is subscribed to.

Correct Answer: A

QUESTION 3

Which three scenarios are suitable for the Oracle Infrastructure (OCI) Autonomous transaction Processing Server less (ATP-S) deployment?

- A. well established, online auction marketplace is running an application where there is database usage 24/7 but also has peaks of activity that are hard to predict when the peaks happen, the total activities may reach 3 times the normal activity level
- B. A small startup is deploying a new application for eCommerce and it requires database to store customers' transactions. The team is unsure of what the load will look like since it is a new application.
- C. A midsize company is considering migrating its legacy on-premises MongoDB database to Oracle Cloud Infrastructure (OCI). The database has significantly higher workloads on weekends than weekdays
- D. A developer working on an internal project needs to use a database during work hours but doesn't need it during nights or weekends. The project budget requires her to keep costs low.
- E. A manufacturing company is running Oracle E-Business Suite application on-premises. They are looking to move this application to OCI and they want to use a managed database offering for their database tier.

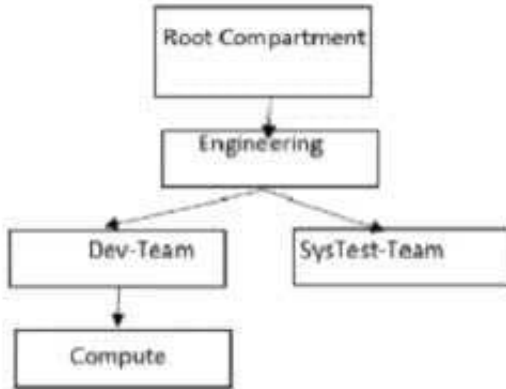
Correct Answer: ABD

MongoDB is a cross-platform document-oriented database program. Classified as a NoSQL database



QUESTION 4

Give this compartment structure:



You want to move a compute instance that is in `\\Compute\\` compartment to `\\SysTes-Team\\`. You login to your Oracle Cloud Infrastructure (OCI) account and use the `\\Move Resource\\` option. What will happen when you attempt moving the compute resource?

- A. The move will be successful though Compute Instance and its Public and Private IP address will stay the same. The Compute instance VNIC will need to be moved separately. The Compute instance will still be associated with the original VCN.
- B. The move will fail and you will be prompted to move the VCN first. Once VCN is moved to the target compartment, the Compute instance can be moved.
- C. The move will be successful though Compute Instance Public and Private IP address changed, and it will be associated to the VCN in target compartment.
- D. The move will be successful though Compute Instance and its Public and Private IP address will stay the same. The Compute instance VNIC will still be associated with the original VCN.

Correct Answer: D

Moving Resources to a Different Compartment Most resources can be moved after they are created. There are a few resources that you can't move from one compartment to another. Some resources have attached resource dependencies and some don't. Not all attached dependencies behave the same way when the parent resource moves. For some resources, the attached dependencies move with the parent resource to the new compartment immediately, but in some cases attached dependencies move asynchronously and are not visible in the new compartment until the move is complete. For other resources, the attached resource dependencies do not move to the new compartment. You can move these attached resources independently. You can move Compute resources such as instances, instance pools, and custom images from one compartment to another. When you move a Compute resource to a new compartment, associated resources such as boot volumes and VNICs are not moved. You can move a VCN from one compartment to another. When you move a VCN, its associated VNICs, private IPs, and ephemeral IPs move with it to the new compartment.

QUESTION 5

A retail company has recently adopted a hybrid architecture. They have the following requirements for their end-to-end



Connectivity model between their on-premises data center and Oracle Cloud Infrastructure (OC1) region

*

Highly available connection with service level redundancy

*

Dedicated network bandwidth with low latency

Which connectivity setup is the most cost effective solution for this scenario?

A.

Setup IPsec VPN as your primary connection, and a FastConnect virtual circuit as a backup connection. Use separate edge devices in your on-premises data center for each connection from your edge devices, advertise more specific routes IPsec VPN, and specific routes through the backup FastConnect virtual circuit.

B.

Setup FastConnect virtual circuit as your primary connection, and a second FastConnect virtual circuit as a backup connection. Use separate edge devices in your FastConnect physical connectivity is redundant Use a single edge device in your on premises data center for each connection From yc device, advertise more specific routes via primary FastConnect virtual circuit, and less specific routes through t backup FastConnect circuit.

C.

Setup FastConnect virtual circuit as your primary connection, and an IPsec VPN as a backup connection. Use separate edge devices in your on-premises data center for each connection. From your edge devices, advertise more specific routes through FastConnect virtual circuit, and more specific routes through the backup IPsec VPN path.

D.

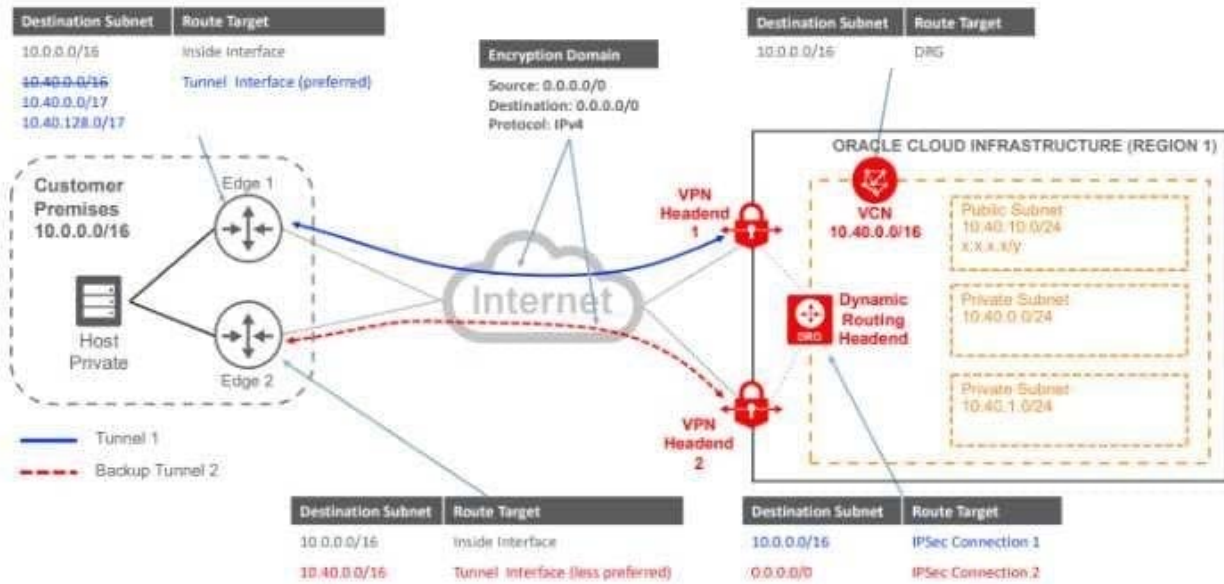
Setup IPsec VPN as your primary connection, and a second IPsec VPN as a backup connection. Use separate edge devices in your on p data center for each connection. From your edge devices, advertise more specific routes via primary IPsec VPN. and less specific rod the backup IPsec VPN.

Correct Answer: D

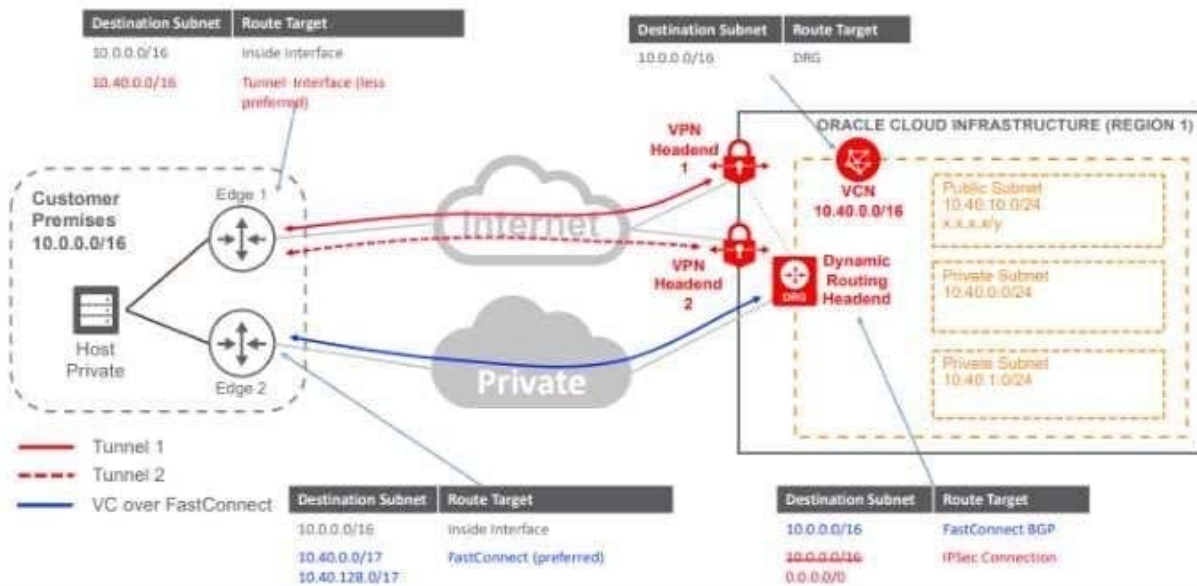
there are two main requirements for this Customer First Highly available connection with service level redundancy and that can achieve by



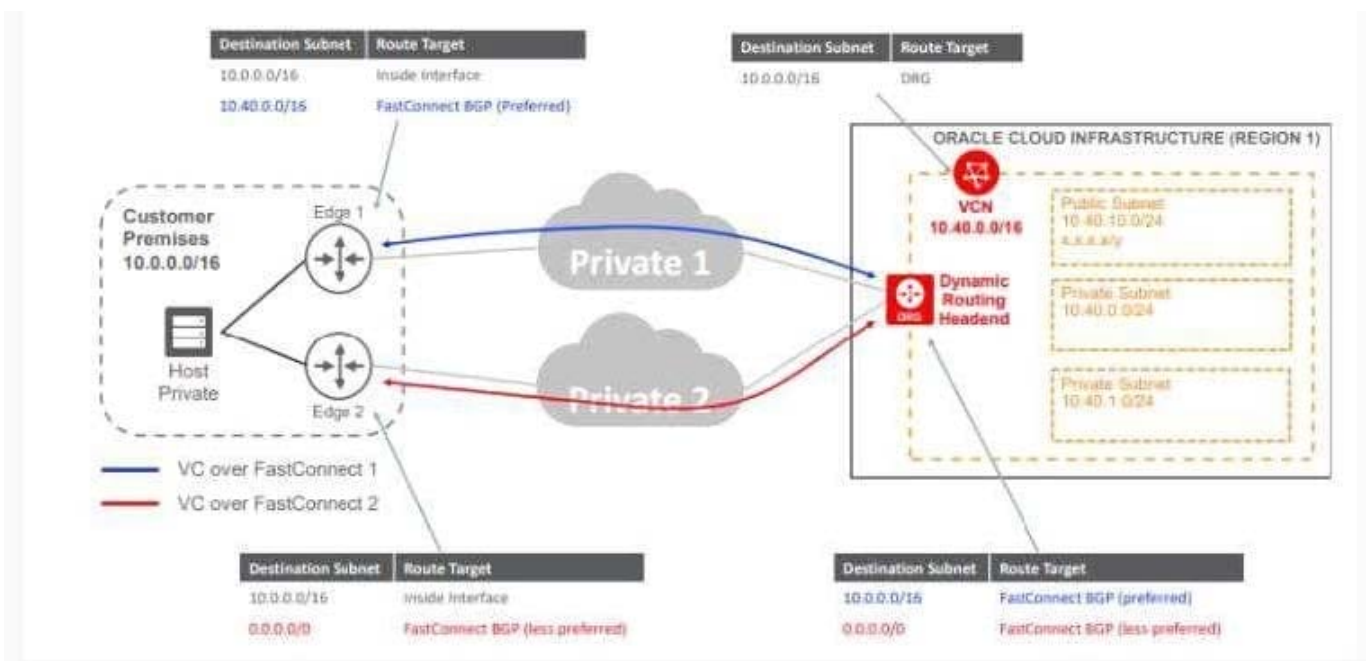
1- VPN Connect with a Redundant Customer Edge Device



2- FastConnect Plus a Single VPN Connect Connection



3- Redundant FastConnect



[Latest 1Z0-997 Dumps](#)

[1Z0-997 VCE Dumps](#)

[1Z0-997 Practice Test](#)