



# 200-301<sup>Q&As</sup>

Implementing and Administering Cisco Solutions (CCNA) (Include Newest Simulation Labs)

## Pass Cisco 200-301 Exam with 100% Guarantee

Free Download Real Questions & Answers **PDF** and **VCE** file from:

<https://www.geekcert.com/200-301.html>

100% Passing Guarantee  
100% Money Back Assurance

Following Questions and Answers are all new published by Cisco  
Official Exam Center

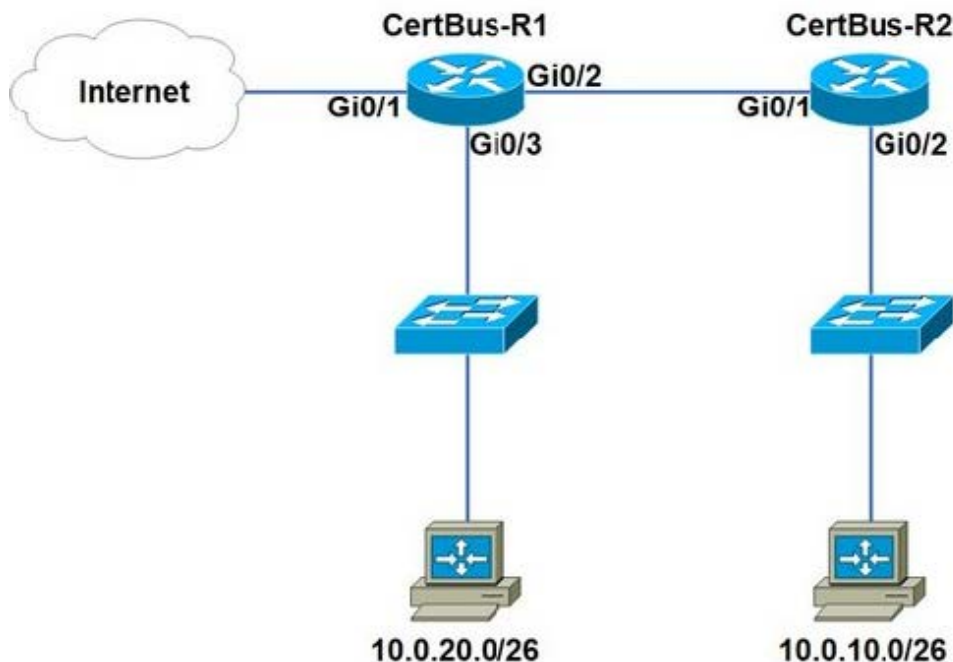
- ⚙️ **Instant Download** After Purchase
- ⚙️ **100% Money Back** Guarantee
- ⚙️ **365 Days** Free Update
- ⚙️ **800,000+** Satisfied Customers





## QUESTION 1

Refer to the exhibit.



```
CertBus-R2#config t
CertBus-R2(config)#access-list 101 deny tcp 10.0.20.0 0.0.0.63 10.0.10.0 0.0.0.63 eq smtp
CertBus-R2(config)#access-list 101 deny tcp 10.0.20.0 0.0.0.63 10.0.10.0 0.0.0.63 eq www
CertBus-R2(config)#int gi0/2
CertBus-R2(config-if)#ip access-group 101 in
```

An extended ACL has been configured and applied to router R2. The configuration failed to work as intended.

Which two changes stop outbound traffic on TCP ports 25 and 80 to 10.0.20.0/26 from the 10.0.10.0/26 subnet while still allowing all other traffic? (Choose two.)

- A. Add a "permit ip any any" statement at the end of ACL 101 for allowed traffic.
- B. Add a "permit ip any any" statement to the beginning of ACL 101 for allowed traffic.
- C. The ACL must be moved to the Gi0/1 interface outbound on R2.
- D. The source and destination IPs must be swapped in ACL 101.
- E. The ACL must be configured the Gi0/2 interface inbound on R1.

Correct Answer: AD

All ACLs have a implicit deny at the end which blocks all traffic so we need to add a permit to allow that traffic through



## QUESTION 2

DRAG DROP Drag and drop the SNMP manager and agent identifier commands from the left onto the functions on the right

Select and Place:

show snmp chassis	displays information about the SNMP recipient
show snmp community	displays the IP address of the remote SNMP device
show snmp engineID	displays the SNMP security model in use
show snmp group	displays the SNMP access string
show snmp host	displays the SNMP server serial number

Correct Answer:

show snmp host
show snmp engineID
show snmp group
show snmp community
show snmp chassis

[https://www.cisco.com/c/en/us/td/docs/ios-xml/ios/snmp/command/snmp-xe-3se-3850-cr-book/snmp-xe-3se-3850-cr-book\\_chapter\\_0110.html](https://www.cisco.com/c/en/us/td/docs/ios-xml/ios/snmp/command/snmp-xe-3se-3850-cr-book/snmp-xe-3se-3850-cr-book_chapter_0110.html)



---

**QUESTION 3**

An engineer is configuring NAT to translate the source subnet of 10.10.0.0/24 to any of three addresses 192.168.30.1, 192.168.3.2, 192.168.3.3 . Which configuration should be used?

- A. **enable**  
**configure terminal**  
**ip nat pool mypool 192.168.3.1 192.168.3.3 prefix-length 30**  
**access-list 1 permit 10.10.0.0 0.0.0.255**  
**ip nat outside destination list 1 pool mypool**  
**interface g1/1**  
**ip nat inside**  
**interface g1/2**  
**ip nat outside**
- B. **enable**  
**configure terminal**  
**ip nat pool mypool 192.168.3.1 192.168.3.3 prefix-length 30**  
**access-list 1 permit 10.10.0.0 0.0.0.254**  
**ip nat inside source list 1 pool mypool**  
**interface g1/1**  
**ip nat inside**  
**interface g1/2**  
**ip nat outside**
- C. **enable**  
**configure terminal**  
**ip nat pool mypool 192.168.3.1 192.168.3.3 prefix-length 30**  
**route-map permit 10.10.0.0 255.255.255.0**  
**ip nat outside destination list 1 pool mypool**  
**interface g1/1**  
**ip nat inside**  
**interface g1/2**  
**ip nat outside**
- D. **enable**  
**configure terminal**  
**ip nat pool mypool 192.168.3.1 192.168.3.3 prefix-length 30**  
**access-list 1 permit 10.10.0.0 0.0.0.255**  
**ip nat inside source list 1 pool mypool**  
**interface g1/1**  
**ip nat inside**  
**interface g1/2**  
**ip nat outside**

A. Option A

B. Option B



C. Option C

D. Option D

Correct Answer: D

#### QUESTION 4

##### DRAG DROP

An engineer must configure a core router with a floating static default route to the backup router at 10.200.0.2.

Select and Place:

DNS
HTTP
RTP
SMTP
SNMP
Telnet

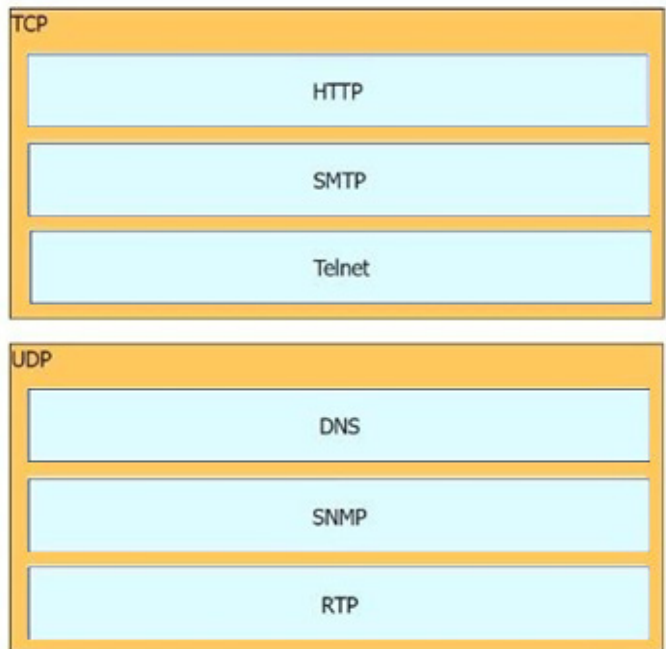
TCP

UDP

Correct Answer:






**QUESTION 5**

Refer to the exhibit.

Gateway of last resort is 172.16.2.2 to network 0.0.0.0

10.0.0.0/8 is variably subnetted, 2 subnets, 2 masks

C 10.10.10.0/24 is directly connected, GigabitEthernet0/0/0

L 10.10.10.3/32 is directly connected, GigabitEthernet0/0/0

172.16.0.0/16 is variably subnetted, 3 subnets, 2 masks

S 172.16.1.33/32 is directly connected, GigabitEthernet0/0/1

C 172.16.2.0/23 is directly connected, GigabitEthernet0/0/1

L 172.16.2.1/32 is directly connected, GigabitEthernet0/0/1

S\* 0.0.0.0/0 [1/0] via 172.16.2.2

A packet sourced from 10.10.10.1 is destined for 172.16.3.254. What is the subnet mask of the destination route?

A. 0.0.0.0

B. 255.255.254.0

C. 255.255.255.0

D. 255.255.255.255

Correct Answer: A



VCE & PDF

GeekCert.com

<https://www.geekcert.com/200-301.html>

2024 Latest geekcert 200-301 PDF and VCE dumps Download

---

[200-301 PDF Dumps](#)

[200-301 Study Guide](#)

[200-301 Exam Questions](#)