



200-401^{Q&As}

Managing Industrial Networks with Cisco Networking Technologies
(IMINS)

Pass Cisco 200-401 Exam with 100% Guarantee

Free Download Real Questions & Answers **PDF** and **VCE** file from:

<https://www.geekcert.com/200-401.html>

100% Passing Guarantee
100% Money Back Assurance

Following Questions and Answers are all new published by Cisco
Official Exam Center

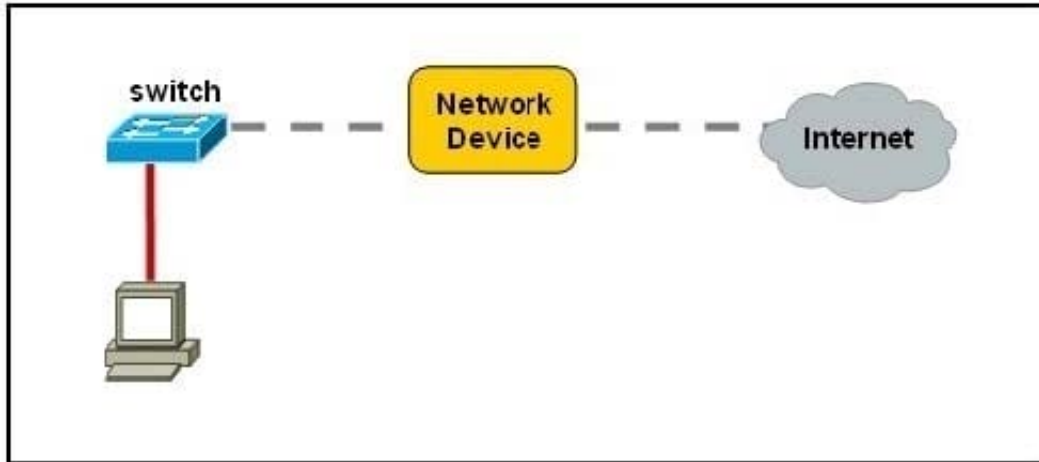
-  **Instant Download** After Purchase
-  **100% Money Back** Guarantee
-  **365 Days** Free Update
-  **800,000+** Satisfied Customers





QUESTION 1

Exhibit:



Refer to the exhibit. An industrial ruggedized network device needs to be installed in the place of the icon labeled Network Device to accommodate a leased line attachment to the Internet. Which network device and interface configuration meets the minimum requirements for this installation?

- A. a router with two Ethernet interfaces
- B. a switch with two Ethernet interfaces
- C. a router with one Ethernet and one serial interface
- D. a switch with one Ethernet and one serial interface
- E. a router with one Ethernet and one modem interface

Correct Answer: C

QUESTION 2

With a Cisco IE 2000 switch, what does a power status LED indicate when it is solid green?

- A. Power is present on the associated circuit and the system is operating normally.
- B. Power is present on the associated circuit, but there is no correlation to whether the system is operating normally.
- C. The system is operating normally, but power is not necessarily present on the associated circuit.
- D. Power is not present on the associated circuit and the power supply alarm is configured.
- E. The power status LED does not show solid green.

Correct Answer: A



QUESTION 3

How does the optical time domain reflectometer use "backscattered" light to make measurements?

- A. It uses pulses to locate and test for sheath faults, damaged conductors, loose connectors, splices, bridge taps, split pairs, and other problems.
- B. It performs wiremapping to measure that all pins are correctly connected.
- C. It correlates the returned light pulses with a location in the fiber.
- D. It measures light-pulse width to measure that all pins are correctly connected.

Correct Answer: C

QUESTION 4

Which option allows an EtherNet/IP I/O device to be safely installed where it is subject to water immersion?

- A. The device is rated IP20 and the power wiring is installed securely to the terminal block.
- B. The device is rated IP67 and a power cordset is used.
- C. The device is rated IP67 and immersed to 10 m.
- D. The device is rated IP20 and immersed to 10 m.

Correct Answer: B

QUESTION 5

What is the leading cause of fiber-optic link failure?

- A. contaminants
- B. crushed fiber
- C. poor testing practices
- D. bad connectors

Correct Answer: A

[Latest 200-401 Dumps](#)

[200-401 VCE Dumps](#)

[200-401 Exam Questions](#)