



201^{Q&As}

TMOS Administration

Pass F5 201 Exam with 100% Guarantee

Free Download Real Questions & Answers **PDF** and **VCE** file from:

<https://www.geekcert.com/201.html>

100% Passing Guarantee
100% Money Back Assurance

Following Questions and Answers are all new published by F5 Official Exam Center

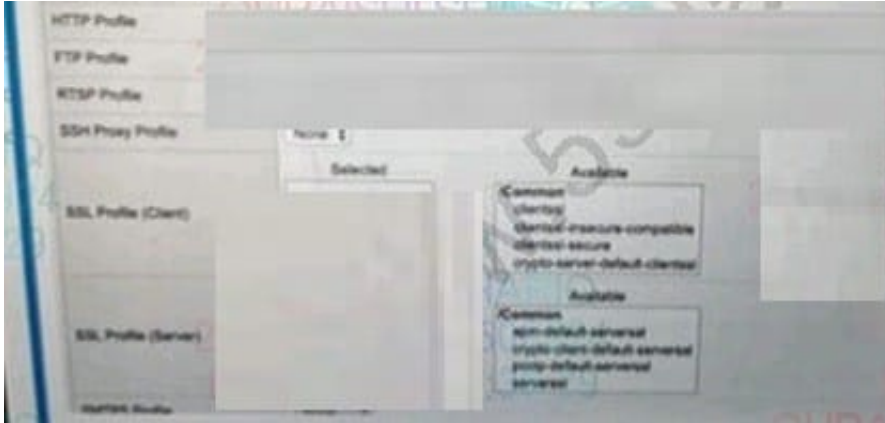
-  **Instant Download** After Purchase
-  **100% Money Back** Guarantee
-  **365 Days** Free Update
-  **800,000+** Satisfied Customers





QUESTION 1

Refer to the exhibit.



A BIG-IP Administrator configures a Virtual Server to handle HTTPS traffic. Users report that the application is NOT working. Which actional configuration is regard to resolve this issue?

- A. Configure SSL Profile (Client)
- B. Configure Protocol Profile (Server)
- C. Configure Service Profile HTTP
- D. Configure SSL Profile (Server)

Correct Answer: A

QUESTION 2

Which two can be a part of a virtual server's definition? (Choose two.)

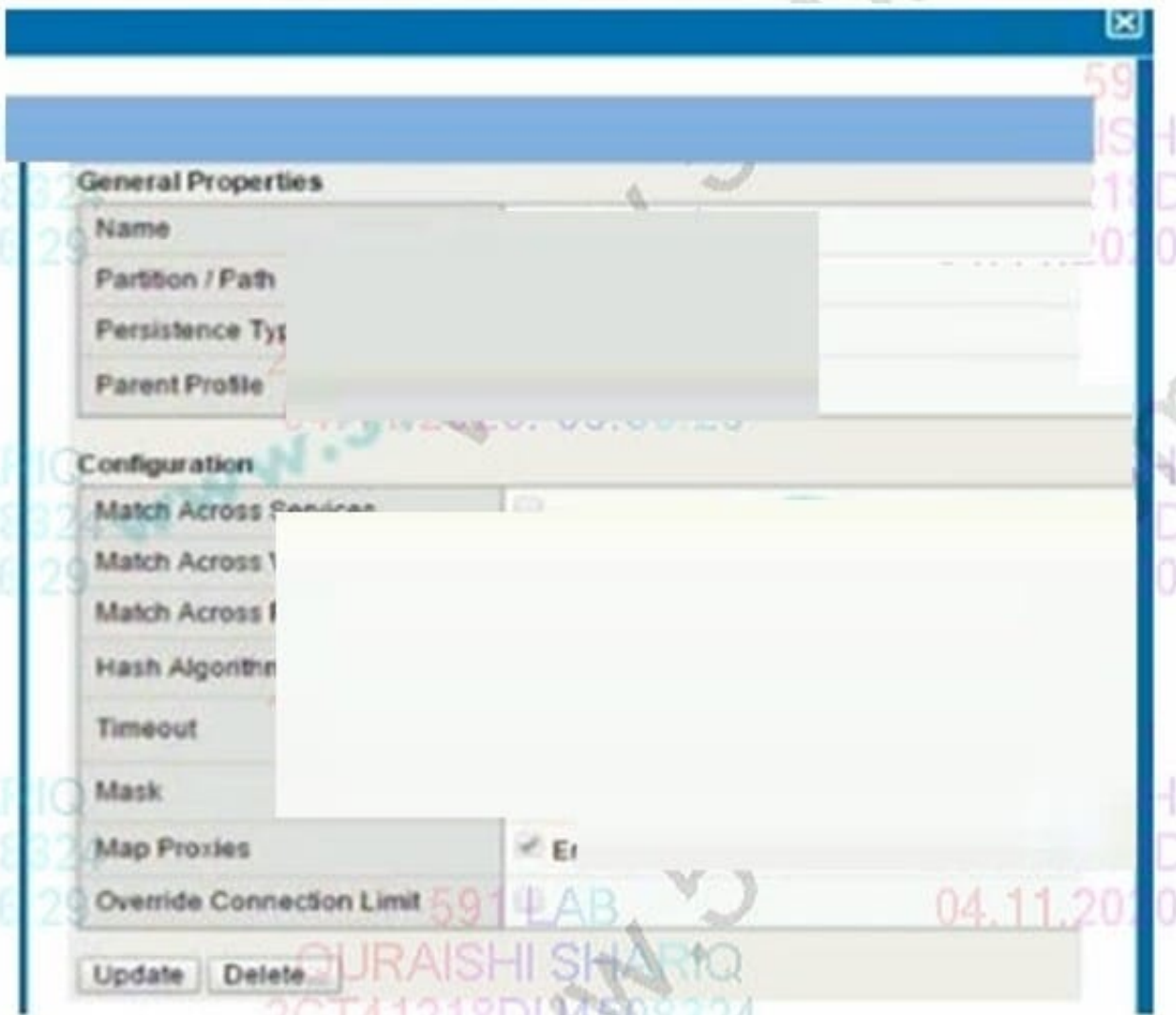
- A. rule(s)
- B. pool(s)
- C. monitor(s)
- D. node address(es)
- E. loadbalancing method(s)

Correct Answer: AB

QUESTION 3



Refer to the exhibit.



How long will the persistence record remain in the table?

- A. 180 seconds after the last packet
- B. 180 seconds after the initial table entry
- C. 300 seconds after the initial table entry
- D. 300 seconds after the last packet

Correct Answer: D

QUESTION 4

Which process or system can be monitored by the BIG-IP system and used as a failover trigger in a redundant pair configuration?

- A. bandwidth utilization



- B. duplicate IP address
- C. CPU utilization percentage
- D. VLAN communication ability

Correct Answer: D

QUESTION 5

A virtual server at 10.10.1.100:80 has the rule listed below applied.

```
when HTTP_REQUEST { if {[HTTP::uri] ends_with "htm" } { pool pool1 } else if {[HTTP::uri] ends_with "xt" } { pool pool2 } }
```

If a user connects to `http://10.10.1.100/foo.txt` which pool will receive the request?

- A. pool1
- B. pool2
- C. None. The request will be dropped.
- D. Unknown. The pool cannot be determined from the information provided.

Correct Answer: B

[201 Practice Test](#)

[201 Study Guide](#)

[201 Exam Questions](#)