



# 220-902<sup>Q&As</sup>

CompTIA A+ Certification Exam

## Pass CompTIA 220-902 Exam with 100% Guarantee

Free Download Real Questions & Answers **PDF** and **VCE** file from:

<https://www.geekcert.com/220-902.html>

100% Passing Guarantee  
100% Money Back Assurance

Following Questions and Answers are all new published by CompTIA  
Official Exam Center

- ⚙️ **Instant Download** After Purchase
- ⚙️ **100% Money Back** Guarantee
- ⚙️ **365 Days** Free Update
- ⚙️ **800,000+** Satisfied Customers





### QUESTION 1

When a folder is copied into a shared folder, the permissions on that folder:

- A. Change ownership to the domain administrator.
- B. Inherit from the shared folder.
- C. Need to be manually recreated.
- D. Retain their original permissions.

Correct Answer: B

---

### QUESTION 2

The IT department is implementing three-factor authentication for traveling users who connect to the network via VPN. Which of the following BEST addresses this request?

- A. PIN, username and password
- B. PIN, token fob, and fingerprint scan
- C. PIN, fingerprint scan and username
- D. Key fob, smart card and password

Correct Answer: A

---

### QUESTION 3

Recently, a user built a new gaming PC and is testing it out by running graphic intensive games. After a short time playing a game, the computer reboots with an error "a thermal event has occurred". Which of the following is the MOST likely cause of this issue?

- A. Processor is under-clocked
- B. Insufficient power to the motherboard
- C. Hard drive is overheating
- D. Video card is overheating

Correct Answer: D

---

### QUESTION 4

A technician must secure company documents from accidental disclosure. Which of the following should be implemented? (Select TWO).



- A. User training
- B. Anti-malware
- C. Paper shredding
- D. Time of day restrictions
- E. Employee badges
- F. Mantraps

Correct Answer: AC

---

### QUESTION 5

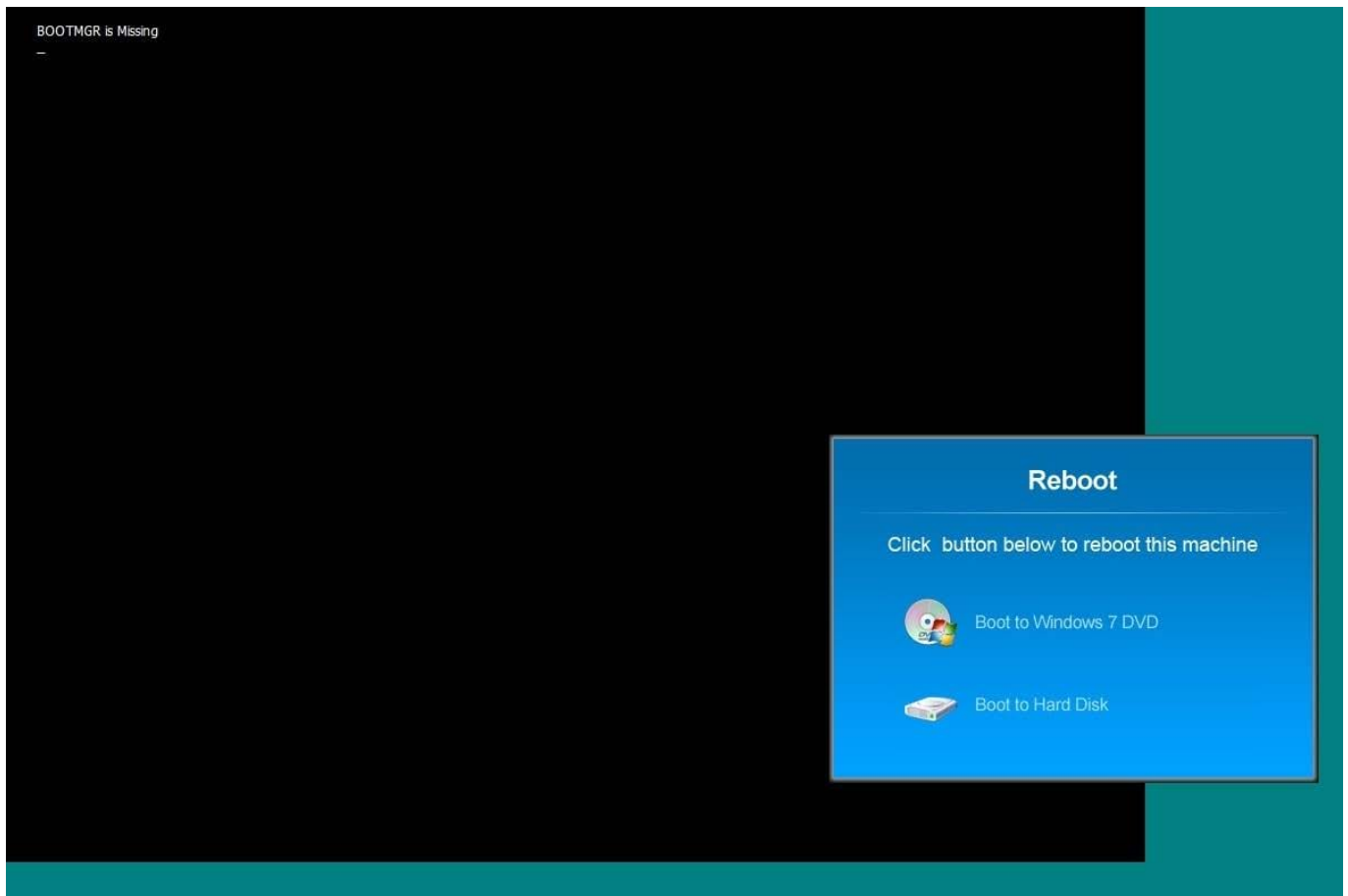
A Windows 7 machine appears to have a failure. Every time it is rebooted, the message "BOOTMGR is missing" appears. You have previously inserted a Windows 7 installation DVD into the DVD-ROM. Please repair this failure without overwriting the customers\\' local user profiles.

Instructions:

Launch the simulation to repair the failure

Type Help in command line to show list of available commands

When you have completed the simulation, please select the done button.

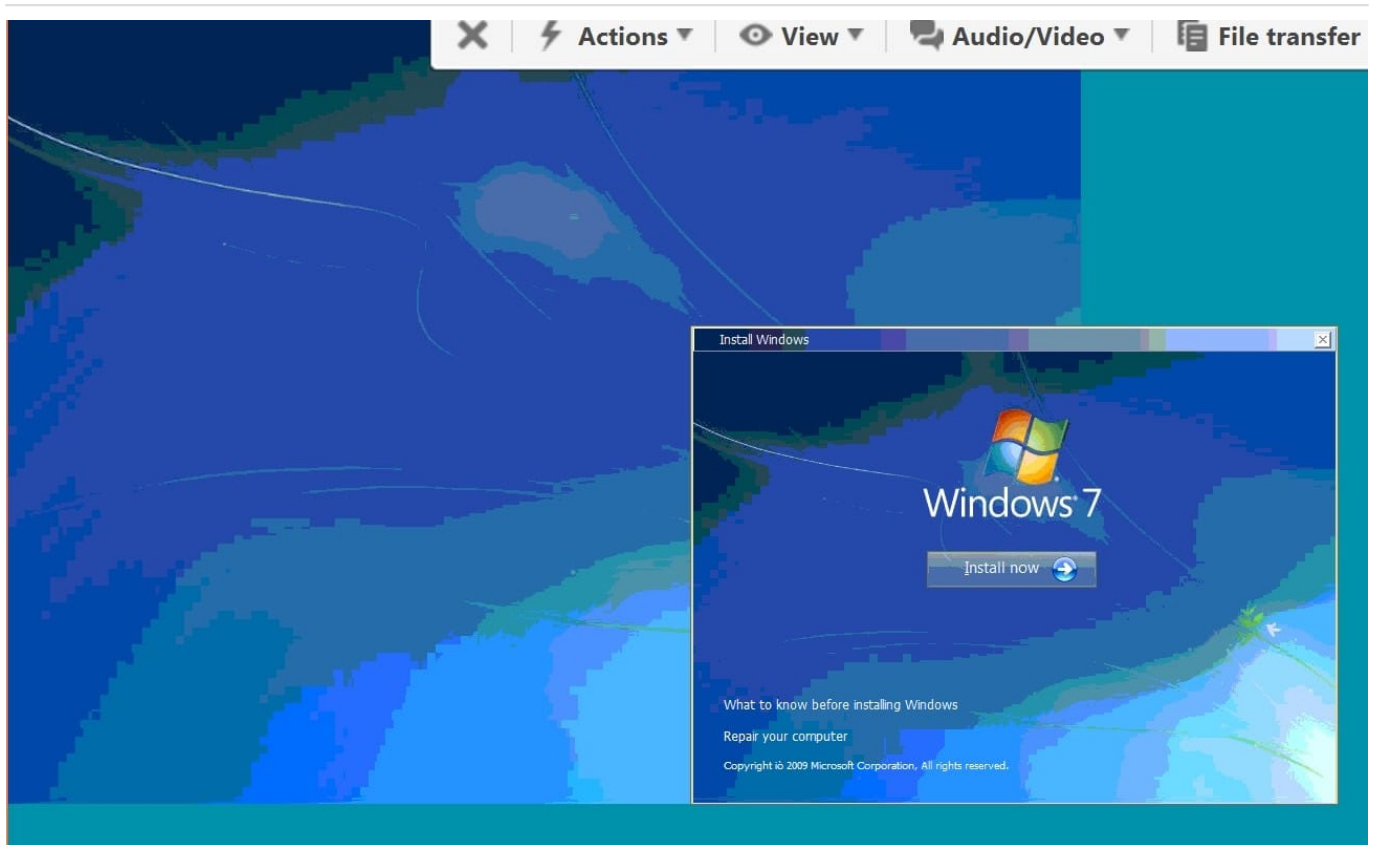


Correct Answer: Review the explanation for all details.

1. Boot using Windows 7 DVD:



Macintosh HD:Users:danielkeller:Desktop:Screen Shot 2015-07-31 at 6.37.10 AM.png



2.

Select "Repair your computer"

Macintosh HD:Users:danielkeller:Desktop:Screen Shot 2015-07-31 at 6.34.37 AM.png

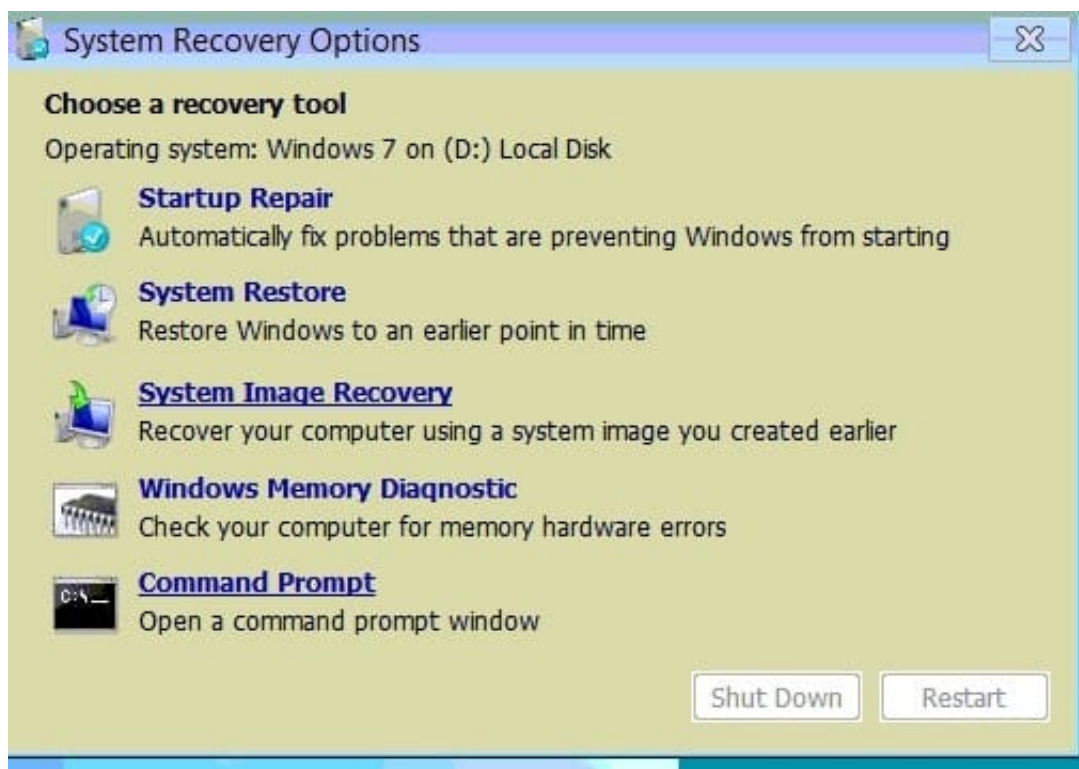
3.

Select recovery tools



Macintosh HD:Users:danielkeller:Desktop:Screen Shot 2015-07-31 at 6.46.03 AM.png

4. Chose command prompt



Macintosh HD:Users:danielkeller:Desktop:Screen Shot 2015-07-31 at 6.46.12 AM.png

5. Use the command bootrec/fixboot



```
Microsoft Windows [Version 6.1.7600]

X:\Sources>bootrec /fixboot
The operation completed successfully.

X:\Sources>
```

Macintosh HD:Users:danielkeller:Desktop:Screen Shot 2015-07-31 at 6.58.08 AM.png

[220-902 PDF Dumps](#)

[220-902 Practice Test](#)

[220-902 Exam Questions](#)