



250-439^{Q&As}

Administration of Symantec IT Management Suite 8.1

Pass Symantec 250-439 Exam with 100% Guarantee

Free Download Real Questions & Answers **PDF** and **VCE** file from:

<https://www.geekcert.com/250-439.html>

100% Passing Guarantee
100% Money Back Assurance

Following Questions and Answers are all new published by Symantec
Official Exam Center

-  **Instant Download** After Purchase
-  **100% Money Back** Guarantee
-  **365 Days** Free Update
-  **800,000+** Satisfied Customers





QUESTION 1

Which resource containers can an administrator arrange in a hierarchy so that one container may include other containers?

- A. Resource targets
- B. Organizational views and groups
- C. Resource filters
- D. Policies and tasks

Correct Answer: B

QUESTION 2

Which two (2) settings are available in the Import Patch Data for Windows task? (Choose two.)

- A. Replace all Superseded Software Updates
- B. Automatically revise Software Update policies after importing patch data
- C. Disable all Superseded Software Updates
- D. Automatically revise Software Update policies and enable distribution of newly added software updates after importing Patch data
- E. Override Maintenance Windows Settings

Correct Answer: BD

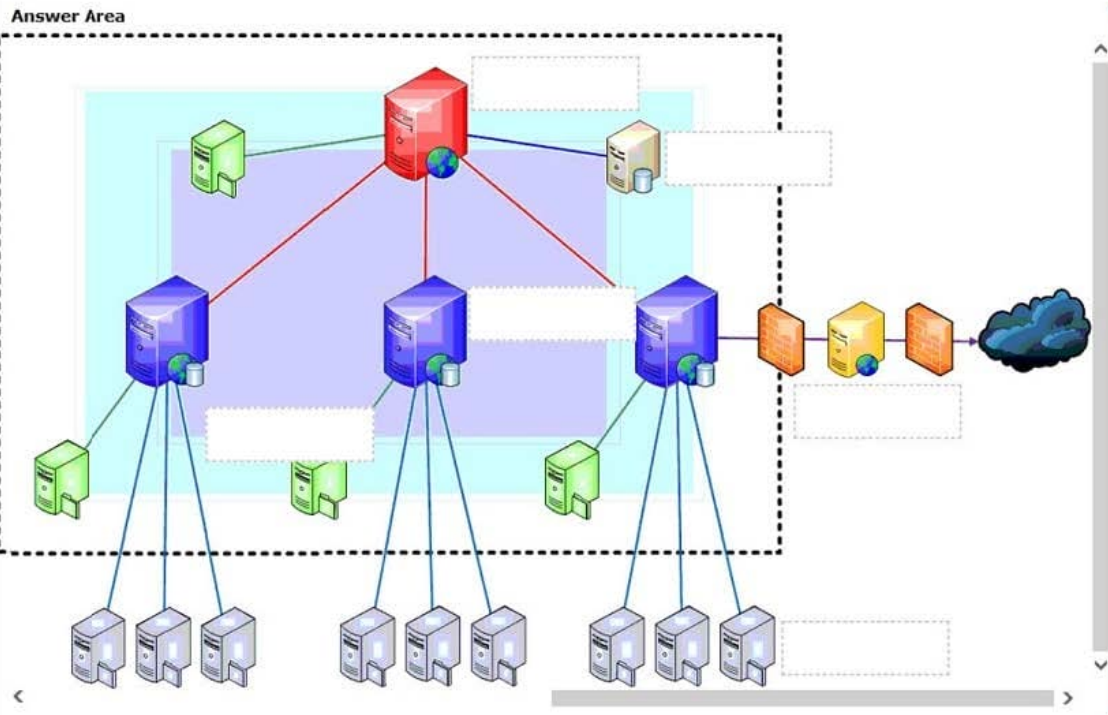
QUESTION 3

Where should an administrator place the IT Management Suite 8.1 solution components in this diagram? Drag and drop the component name to the appropriate component location in the diagram.

Select and Place:

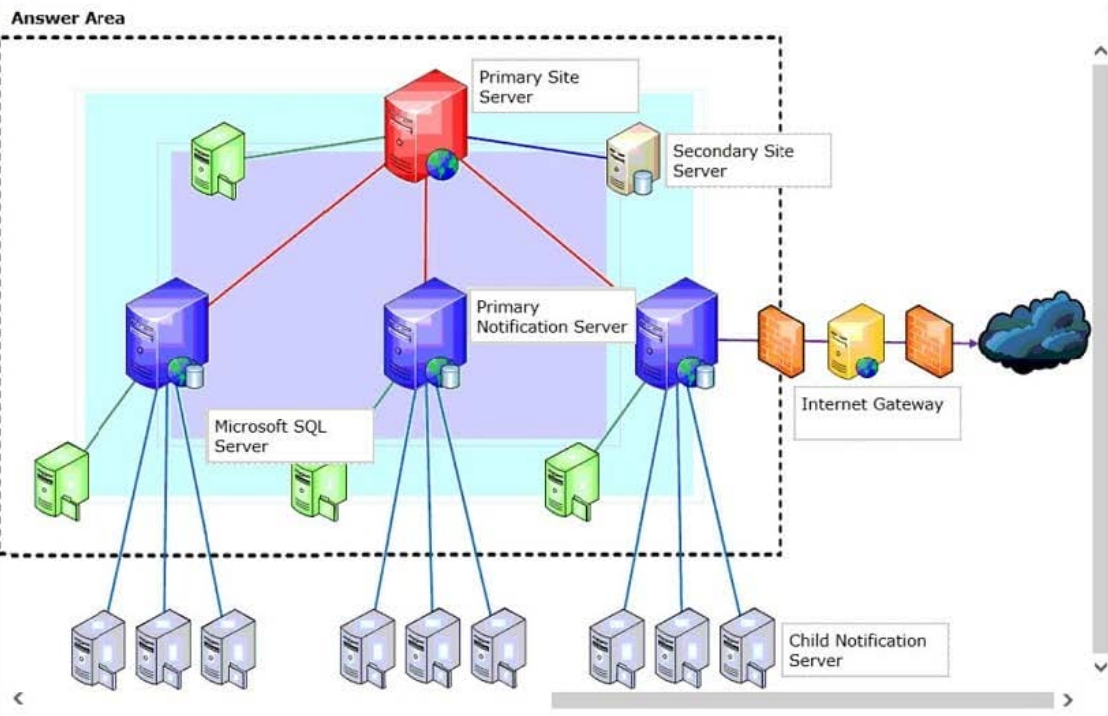


- Primary Notification Server
- Child Notification Server
- Primary Site Server
- Internet Gateway
- Microsoft SQL Server
- Secondary Site Server



Correct Answer:

- Primary Notification Server
- Child Notification Server
- Primary Site Server
- Internet Gateway
- Microsoft SQL Server
- Secondary Site Server



QUESTION 4



Which item, in addition to Product Name and Version, must be specified by an administrator to minimize duplication of data and minimize processing on the Notification Server when manually adding a software resource to the Software Catalog?

- A. Platform
- B. Software Product
- C. Manufacturer
- D. Language

Correct Answer: B

QUESTION 5

Which action does the Symantec Management Agent perform when it receives a tickle packet?

- A. It requests a policy update from the Notification Server.
- B. It sends its list of package download locations to the Package Server.
- C. It requests task information from a Task Server.
- D. It sends basic inventory information to the Notification Server.

Correct Answer: C

Tickle packet, it will request the task/job information from its registered Task Server.

Reference: <https://support.symantec.com/us/en/article.howto7351.html>

[Latest 250-439 Dumps](#)

[250-439 VCE Dumps](#)

[250-439 Exam Questions](#)