



2V0-620^{Q&As}

vSphere 6 Foundations Beta

Pass VMware 2V0-620 Exam with 100% Guarantee

Free Download Real Questions & Answers **PDF** and **VCE** file from:

<https://www.geekcert.com/2v0-620.html>

100% Passing Guarantee
100% Money Back Assurance

Following Questions and Answers are all new published by VMware
Official Exam Center

-  **Instant Download** After Purchase
-  **100% Money Back** Guarantee
-  **365 Days** Free Update
-  **800,000+** Satisfied Customers





QUESTION 1

An administrator creates a DRS cluster of eight ESXi 6.x hosts. There are 10 virtual machines balanced across the hosts. An attempt to place the first host into maintenance mode fails.

What are two reasons that the host failed to enter maintenance mode? (Choose two.)

- A. The DRS cluster Automation Level is set to Partially Automated mode.
- B. One of the virtual machines on the ESXi Host entering maintenance mode is configured with a DRS Host affinity rule Should run on hosts in group.
- C. One of the virtual machines on the ESXi Host entering maintenance mode is configured with a DRS Host affinity rule Must run on hosts in group.
- D. One of the virtual machines on the ESXi Host entering maintenance mode is configured with an individual Automation Level set to Partially Automated.

Correct Answer: AD

When considering an automation level, it is usually best to choose Fully Automated and let DRS handle everything. However, when first enabling DRS, you might want to set the automation level to Manual or Partially Automated so that you can observe its recommendations for a while before turning it loose on Fully Automated. Even when selecting Fully Automated, you can still configure individual VM automation levels, so you can specify certain VMs to not be migrated at all (disabled) or to be set to Manual or Partially Automated. To configure individual VM automation levels, click on Virtual Machine Options, located under DRS. Usually, the default three-star level is a good starting point and works well for most environments. You should be careful when choosing more aggressive levels, as you could have VMs moving very frequently between hosts (i.e., VM pong), which can create performance issues because of the constant VMotions which cause an entire LUN to be locked during the operation (i.e., SCSI reservations). Reference: <http://cdn.ttgmedia.com/searchSystemsChannel/downloads/AdvancedvSpherefeatures.pdf>

QUESTION 2

Which three actions can be taken as a result of executing the vSphere Update Manager 6.x scan and remediation wizards? (Choose three.)

- A. Install and upgrade software in virtual machines.
- B. Upgrade the firmware on ESXi host devices.
- C. Upgrade and Patch ESXi hosts.
- D. Install and update third-party software on hosts.
- E. Upgrade virtual machine hardware.

Correct Answer: CDE

vSphere Update Manager 6.x scan and remediation wizards offer upgrade and patch ESXi hosts, install and update third-party software and upgrade virtual machine hardware. Reference: http://www.vmware.com/pdf/vsp_vum_40_admin_guide.pdf



QUESTION 3

An organization has an ESXi 6.x host that contains two resource pools. The host is being relocated to a DRS cluster.

What two actions can be taken to integrate the host into the cluster, and what would happen to the existing ESXi resource pool hierarchy as a result? (Choose two.)

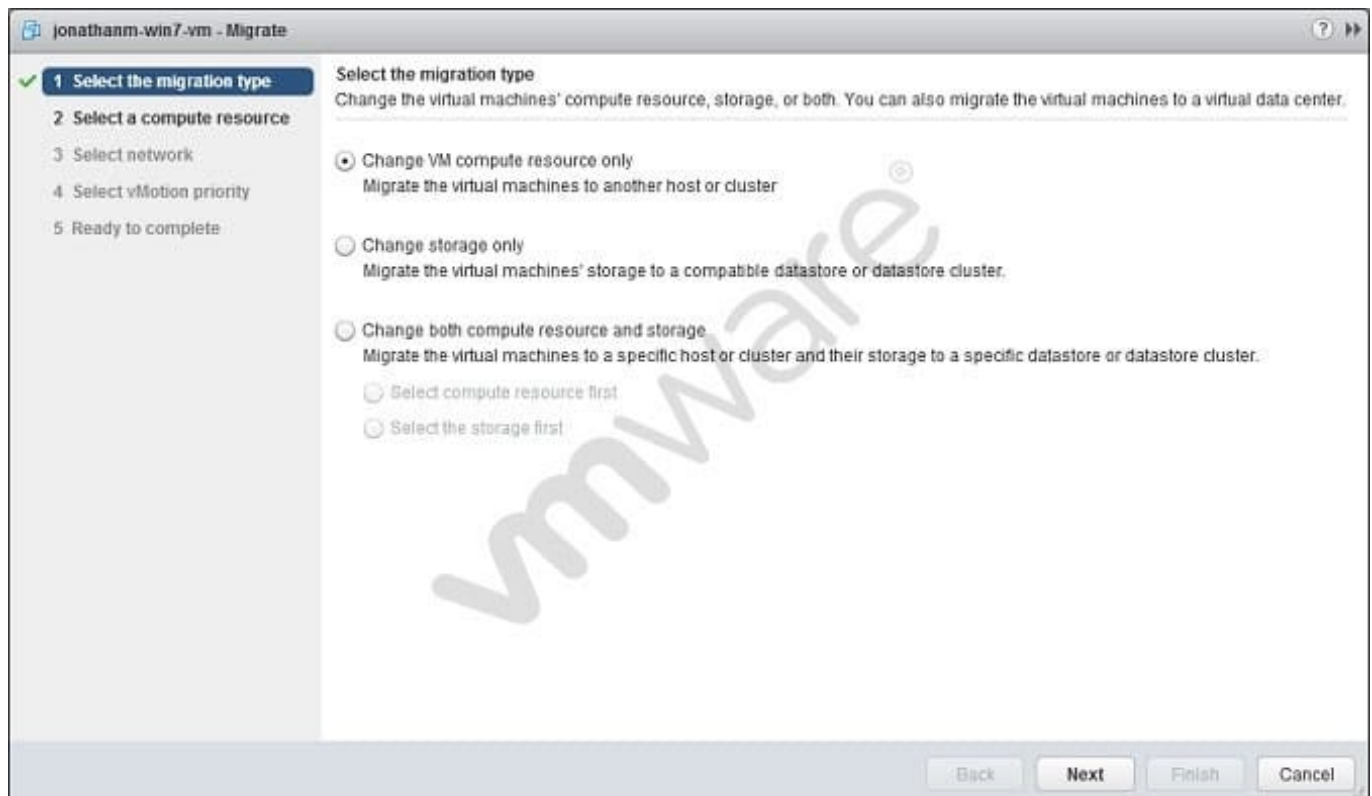
- A. Place all of the host's virtual machines into the DRS cluster root resource pool. The resource pools present on the host will be deleted.
- B. Create a resource pool for the ESXi host's virtual machines and resource pools. The resource pools present on the host will be deleted.
- C. Place all of the host's virtual machines into the DRS cluster root resource pool. The resource pools present on the host will be preserved.
- D. Create a resource pool for the ESXi host's virtual machines and resource pools. The resource pools present on the host will be preserved.

Correct Answer: AD

First, place all of the host's virtual machines into DRS cluster root resources pool. The resource pool present on the host will be deleted. Create a resource pool for the ESXi host's virtual machines and resource pools. It will be preserved. Reference: <https://communities.vmware.com/thread/473862?start=0andtstart=0>

QUESTION 4

Refer to the Exhibit.





An administrator is migrating a powered-on virtual machine, as shown in the exhibit. Which option should be selected to perform a Storage vMotion of the VM?

- A. Change storage only
- B. Change VM compute resource only
- C. Change both compute resource and storage, changing the compute resource first.
- D. Change both compute resource and storage, changing the storage resource first.

Correct Answer: A

QUESTION 5

Which two NFS Protocol versions does vSphere 6 support? (Choose two.)

- A. Version 3
- B. Version 3.1
- C. Version 4
- D. Version 4.1

Correct Answer: AD

ESXi supports NFS protocols version 3 and 4.1. To support both versions, ESXi uses two different NFS clients.

Reference: <https://pubs.vmware.com/vsphere-60/index.jsp?topic=%2Fcom.vmware.vsphere.storage.doc%2FGUID-8A929FE4-1207-4CC5-A086-7016D73C328F.html>

[Latest 2V0-620 Dumps](#)

[2V0-620 VCE Dumps](#)

[2V0-620 Practice Test](#)