



# 2V0-620<sup>Q&As</sup>

vSphere 6 Foundations Beta

## Pass VMware 2V0-620 Exam with 100% Guarantee

Free Download Real Questions & Answers **PDF** and **VCE** file from:

<https://www.geekcert.com/2v0-620.html>

100% Passing Guarantee  
100% Money Back Assurance

Following Questions and Answers are all new published by VMware  
Official Exam Center

-  **Instant Download** After Purchase
-  **100% Money Back** Guarantee
-  **365 Days** Free Update
-  **800,000+** Satisfied Customers





### QUESTION 1

An organization has an ESXi 6.x host that contains two resource pools. The host is being relocated to a DRS cluster.

What two actions can be taken to integrate the host into the cluster, and what would happen to the existing ESXi resource pool hierarchy as a result? (Choose two.)

- A. Place all of the host's virtual machines into the DRS cluster root resource pool. The resource pools present on the host will be deleted.
- B. Create a resource pool for the ESXi host's virtual machines and resource pools. The resource pools present on the host will be deleted.
- C. Place all of the host's virtual machines into the DRS cluster root resource pool. The resource pools present on the host will be preserved.
- D. Create a resource pool for the ESXi host's virtual machines and resource pools. The resource pools present on the host will be preserved.

Correct Answer: AD

First, place all of the host's virtual machines into DRS cluster root resources pool. The resource pool present on the host will be deleted. Create a resource pool for the ESXi host's virtual machines and resource pools. It will be preserved. Reference: <https://communities.vmware.com/thread/473862?start=0andtstart=0>

---

### QUESTION 2

An administrator is unable to remove an ESXi 6.x host from a vSphere Distributed Switch.

What are two likely reasons for this issue? (Choose two.)

- A. Vmkernel interfaces on the switch are still in use.
- B. VM Network port group adapters are connected to different switch.
- C. Physical NICs are migrated to different switch.
- D. VM Network adapters are connected to this switch.

Correct Answer: AD

You cannot remove the host from the distributed switch or delete the host proxy switch because of the following reasons.

There are VMkernel adapters on the switch that are in use.

There are virtual machine network adapters connected to the switch.

Reference: [https://pubs.vmware.com/vsphere-55/index.jsp?topic=%](https://pubs.vmware.com/vsphere-55/index.jsp?topic=%2Fcom.vmware.vsphere.troubleshooting.doc%2FGUID-038AC93F-D710-48ED-8E3B-258A23FB2930.html)

[2Fcom.vmware.vsphere.troubleshooting.doc%2FGUID-038AC93F-D710-48ED-8E3B-258A23FB2930.html](https://pubs.vmware.com/vsphere-55/index.jsp?topic=%2Fcom.vmware.vsphere.troubleshooting.doc%2FGUID-038AC93F-D710-48ED-8E3B-258A23FB2930.html)

---



### QUESTION 3

What is a requirement when enabling a Virtual SAN cluster in an existing High Availability (HA) and Distributed Resource Scheduler (DRS) Cluster?

- A. Disable DRS and HA before enabling Virtual SAN
- B. Enable DRS before enabling Virtual SAN
- C. Disable HA before enabling Virtual SAN
- D. Enable Storage DRS before enabling Virtual SAN

Correct Answer: C

One of the requirement is to disable HA before enabling Virtual SAN. Reference:

<https://pubs.vmware.com/vsphere-60/topic/com.vmware.ICbase/PDF/virtual-san-60administration-guide.pdf>

---

### QUESTION 4

Which three features are not supported when using Fault Tolerance in vSphere 6.x? (Choose three.)

- A. Virtual Volumes (VVOLS)
- B. Storage vMotion
- C. Virtual Machine Component Protection
- D. vMotion
- E. vSphere Distributed Switches

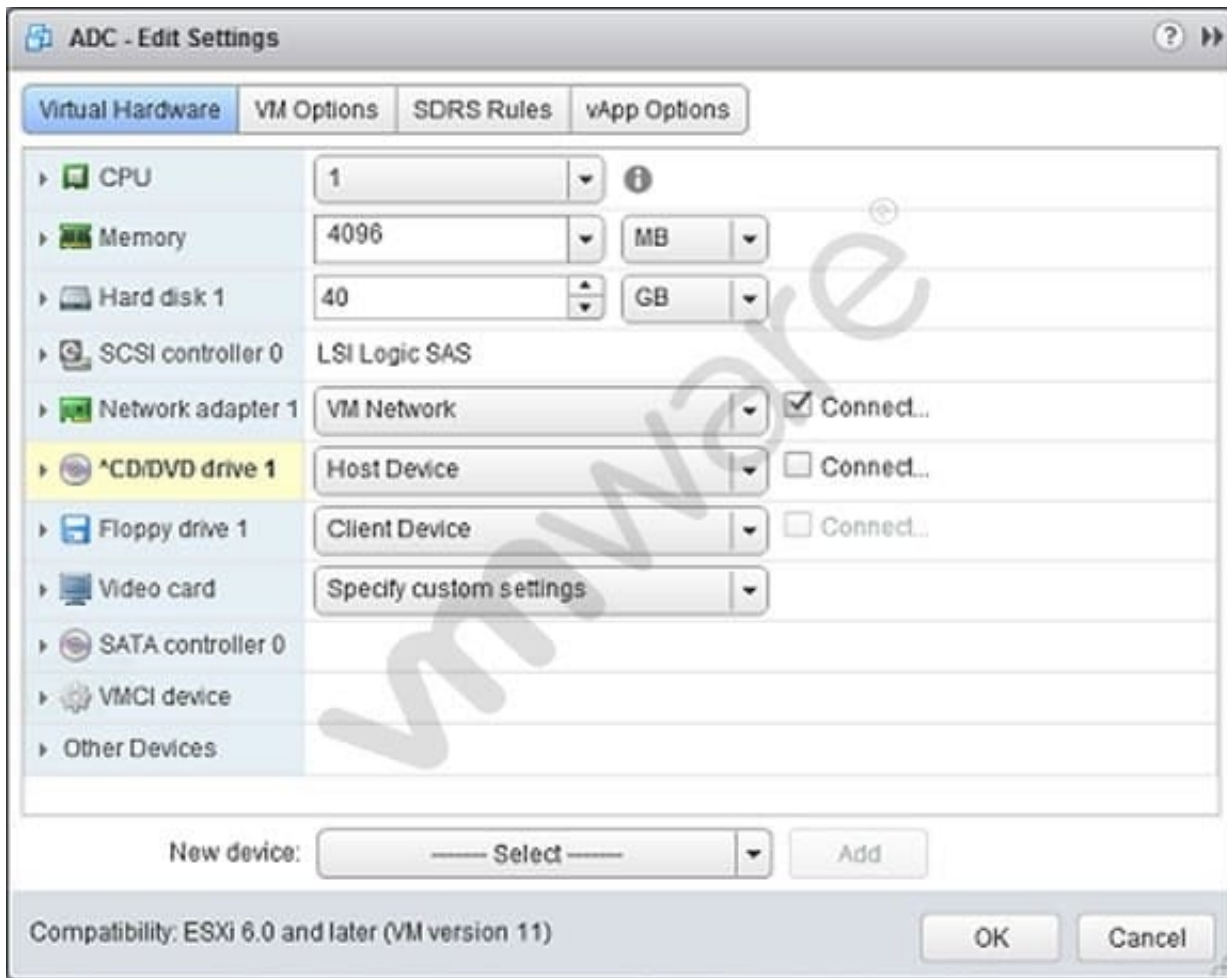
Correct Answer: ABC

Virtual volume, stage vmotion and virtual machine component protection are not support using FT in vSphere 6.x  
Reference: <https://pubs.vmware.com/vsphere-60/topic/com.vmware.ICbase/PDF/vsphere-esxi-vcenterserver-60-availability-guide.pdf> (47 and 48)

---

### QUESTION 5

Refer to the Exhibit.



An administrator is installing Windows into a virtual machine. The DVD has been mounted on the Host and configured for the virtual machine as shown in the Exhibit.

Based on the exhibit, when the virtual machine is booted, why would it attempt to search for a PXE server?

- A. The CD/DVD device is not connected.
- B. The ISO is in the incorrect storage location.
- C. The OS minimum requirements have not been met.
- D. The CD/DVD device is not set to Client Device.

Correct Answer: A

It looks like the CD/DVD device is not connected. Restart the machine and recheck again. When the system doesn't find CD/DVD drive, it looks for PXE server to boot.