



300-180^{Q&As}

Troubleshooting Cisco Data Center Infrastructure

Pass Cisco 300-180 Exam with 100% Guarantee

Free Download Real Questions & Answers **PDF** and **VCE** file from:

<https://www.geekcert.com/300-180.html>

100% Passing Guarantee
100% Money Back Assurance

Following Questions and Answers are all new published by Cisco
Official Exam Center

-  **Instant Download** After Purchase
-  **100% Money Back** Guarantee
-  **365 Days** Free Update
-  **800,000+** Satisfied Customers





QUESTION 1



Instructions

- THIS TASK DOES NOT REQUIRE DEVICE CONFIGURATION.
- Before beginning the questions, carefully read the information in the Scenario tab and familiarize yourself with the network topology.
- To access the multiple-choice questions, click on the numbered boxes on the left of the top panel.
- There are four multiple-choice questions with this task. Be sure to answer all four questions before clicking the Next button.
- Use the tabs at the bottom of the question to navigate between the Topology and question-specific Exhibits. Exhibit_1 maps to Question 1, et cetera.

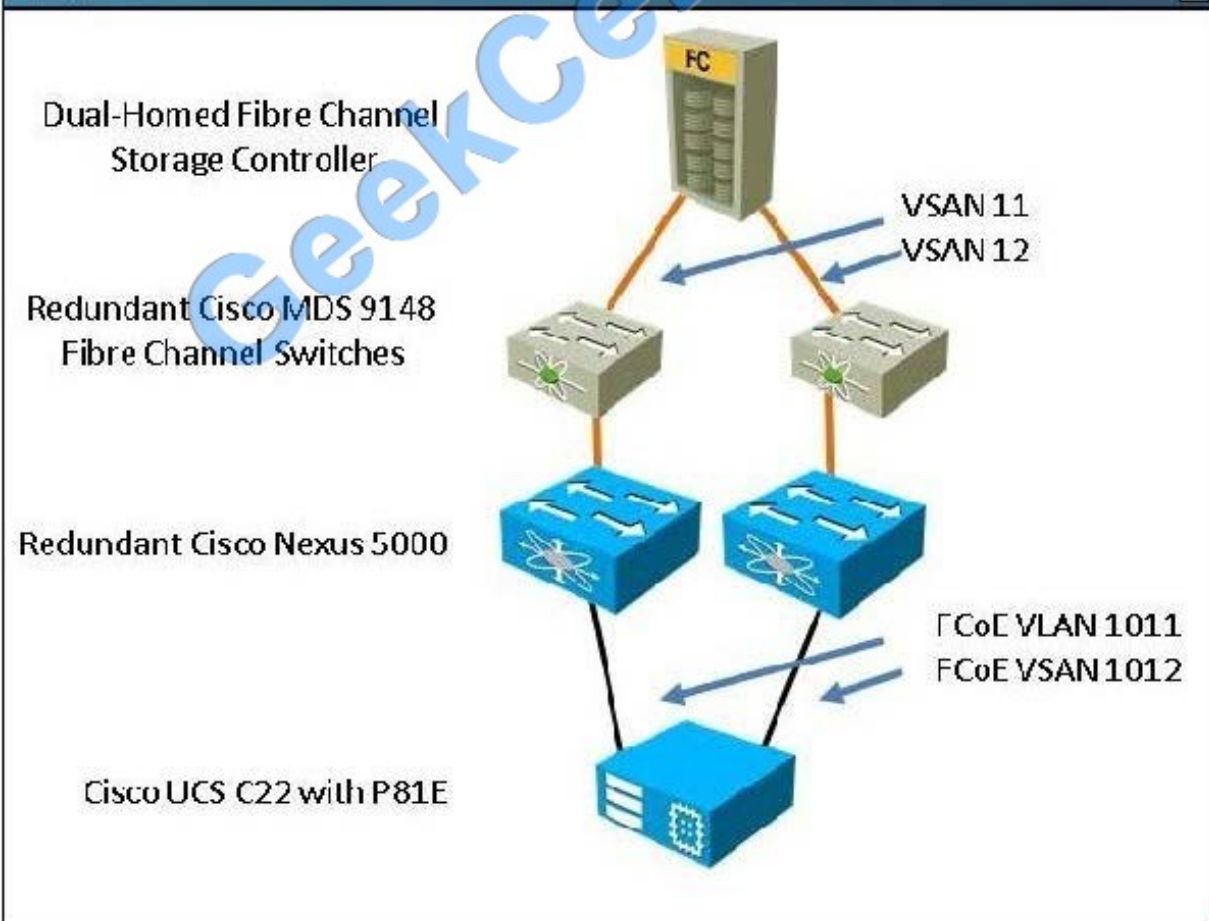
Scenario

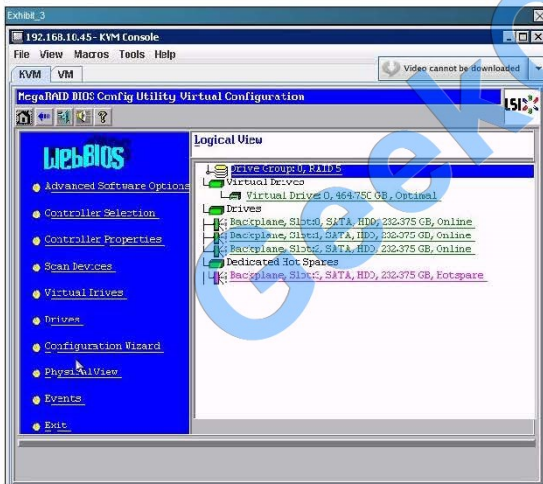
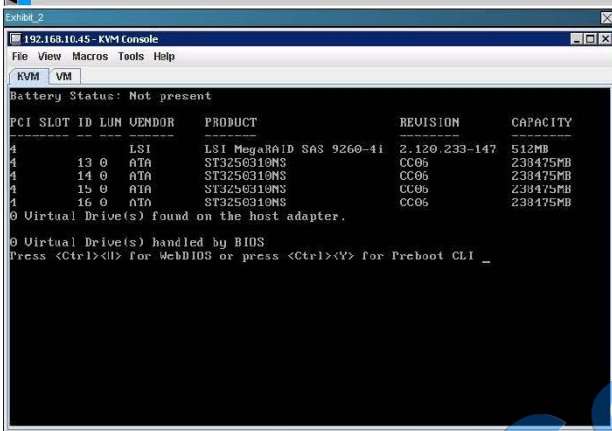
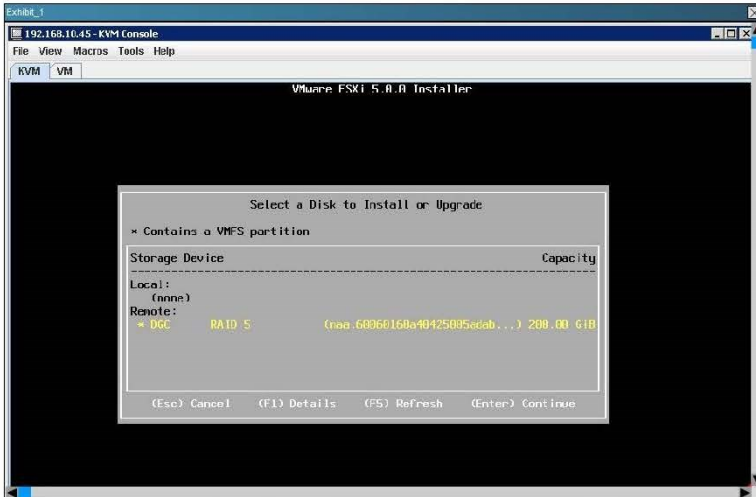
You have received a trouble ticket from a customer with multiple FCoE issues deploying a Cisco UCS C22 M2 server. The server includes a Cisco UCS P81E VIC that has redundant connections to Cisco Nexus 5548 switches.

When the customer loads the installer for VMware ESXi 5.0, it is unable to connect to its boot LUN over Fabric A or Fabric B. To begin, you will concentrate your efforts on achieving connectivity on Fabric A.

The customer is a government agency with an information security policy prohibiting remote access into its network. It has provided a topology, command output from the Nexus 5548, and screenshots from the Cisco Integrated Management Controller of symptoms for you to troubleshoot.

Topology







```
Exhibit_4
192.168.10.45 - KVM Console
File View Macros Tools Help
KVM VM
Battery Status: Not present
PCI SLOT ID LUN VENDOR PRODUCT REVISION CAPACITY
-----
4 LSI LSI MegaRAID SAS 9260-4i 2.120.233-147 512MB
4 13 0 ATA ST3250310NS CC06 238475MB
4 14 0 ATA ST3250310NS CC06 238475MB
4 15 0 ATA ST3250310NS CC06 238475MB
4 16 0 ATA ST3250310NS CC06 238475MB
4 0 LSI Virtual Drive RAID5 475904MB
1 Virtual Drive(s) found on the host adapter.
1 Virtual Drive(s) handled by BIOS
Press <Ctrl><H> for WebBIOS or press <Ctrl><Y> for Preboot CLI
```

Hot Area:

Questions

1 Refer to Exhibit_4. Given the information on this message you see during POST, what write cache policy would you recommend to your customer?

2

3 write-through

4 no write cache

write-back

write-forward

Correct Answer:

Questions

1 Refer to Exhibit_4. Given the information on this message you see during POST, what write cache policy would you recommend to your customer?

2

3 write-through

4 no write cache

write-back

write-forward



QUESTION 2



Instructions

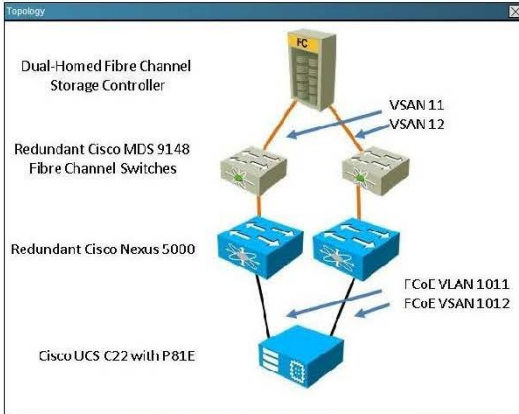
- THIS TASK DOES NOT REQUIRE DEVICE CONFIGURATION.
- Before beginning the questions, carefully read the information in the Scenario tab and familiarize yourself with the network topology.
- To access the multiple-choice questions, click on the numbered boxes on the left of the top panel.
- There are four multiple-choice questions with this task. Be sure to answer all four questions before clicking the Next button.
- Use the tabs at the bottom of the question to navigate between the Topology and question-specific Exhibits. Exhibit_1 maps to Question 1, et cetera.

Scenario

You have received a trouble ticket from a customer with multiple FCoE issues deploying a Cisco UCS C22 M2 server. The server includes a Cisco UCS P81E VIC that has redundant connectors to Cisco Nexus 5548 switches.

When the customer loads the installer for VMware ESXi 5.0, it is unable to connect to its boot LUN over Fabric A or Fabric B. To begin, you will concentrate your efforts on achieving connectivity on Fabric A.

The customer is a government agency with an information security policy prohibiting remote access into its network. It has provided a topology, command output from the Nexus 5548, and screenshots from the Cisco Integrated Management Controller of symptoms for you to troubleshoot.



Exhibit_1

```
192.168.10.45 - KVM Console
File View Macros Tools Help
KVM VM

Initializing Intel(R) Boot Agent GE v1.3.35
PXE 2.1 Build 007 (WfM 2.0)

Cisco VIC FC, Boot Driver Version 2.0(2i)
(C) 2010 Cisco Systems, Inc.

Cisco VIC FC, Boot Driver Version 2.0(2i)
(C) 2010 Cisco Systems, Inc.

LSI MegaRAID SAS-MFI BIOS
Version 3.24.00 (Build October 26, 2011)
Copyright(c) 2011 LSI Corporation
Ha -0 (Bus 18 Dev 0) LSI MegaRAID SAS 9260-41
FW package: 12.12.0-0087
```

Exhibit_2

VHBA Properties

General

Name: fc0

World Wide Node Name: AJFC 20:00:00:25:85:10:30:00

World Wide Port Name: AJFC 20:00:00:25:85:40:40:00

FC SAN Boot:

Enable Persistent LUN Binding:

Uplink Port: 0

MAC Address: AJFC 58:8D:09:0F:01:41

Default VLAN: NONE (1 - 4054)

Class of Service: 3

Rate Limit: OFF (1 - 10000 Mbps)

PCIe Device Order: ANY (0 - 17)

Save Changes Reset Values Cancel



```
Exhibit_3
show flogi database.rtf - WordPad
File Edit View Insert Format Help
Courier New 12 Western B U
N5K1# show flogi database
-----
INTERFACE          VSAN      FCID          PORT NAME          NODE NAME
-----
vfc5                11       0x3b0004     20:00:00:25:b5:40:40:08 20:00:00:25:b5:30:30:05
                  [p5-c-a-esx]

Total number of flogi = 1.

N5K1# show zone active vsan 11 | begin 'zone name p5-c-esx-dcuct'
zone name p5-c-esx-dcuct vsan 11
* fcid 0x3b0004 [pwwn 20:00:00:25:b5:40:40:08] [p5-c-a-esx]
  pwwn 50:06:01:60:3b:a0:08:ed [storage-controller]

For Help, press F1
```

```
Exhibit_4
Document - WordPad
File Edit View Insert Format Help
Courier New 12 Western B U
N5K1# show interface fc2/1
fc2/1 is down (Isolation due to zone merge failure)

N5K1# configure
Enter configuration commands, one per line. End with CNTL/Z.
N5K1(config)# interface fc2/1
N5K1(config-if)# shutdown
N5K1(config-if)# no shutdown
N5K1(config-if)#

2012 Sep 28 14:43:04 N5K1 %$ VDC-1 %$ %ZONE-2-ZS_MERGE_FULL_DATABASE_MISMATCH: %
$VSAN 11%$ Zone merge full database mismatch on interface fc2/1
2012 Sep 28 14:43:04 N5K1 %$ VDC-1 %$ %ZONE-2-ZS_MERGE_FAILED: %$VSAN 11%$ Zone
merge failure, isolating interface fc2/1 reason: Member mismatch:[reason:0]

For Help, press F1
```

Hot Area:



Questions

1 Review the screenshot that the customer emailed to you in the tab **Exhibit_1**.

2

3 You are gathering information to determine the cause of the inability to attach to the boot LLN over FCoE. During POST, two messages appear about the Cisco VIC FC, Boot Driver.

4

Which item is true regarding these messages? (Choose 1)

- They indicate that the Fibre Channel boot driver has failed during POST.
- They indicate that the Fibre Channel Boot Driver has logged into the Fabric A and Fabric B switches.
- They indicate that the Fibre Channel Boot Driver has loaded and there is an entry in the FCNS databases of the switches for Fabric A and Fabric B.
- They indicate that the Fibre Channel Boot Driver has loaded and failed to reach the storage controller on either Fabric A and Fabric B switches

Correct Answer:

Questions

1 Review the screenshot that the customer emailed to you in the tab **Exhibit_1**.

2

3 You are gathering information to determine the cause of the inability to attach to the boot LLN over FCoE. During POST, two messages appear about the Cisco VIC FC, Boot Driver.

4

Which item is true regarding these messages? (Choose 1)

- They indicate that the Fibre Channel boot driver has failed during POST.
- They indicate that the Fibre Channel Boot Driver has logged into the Fabric A and Fabric B switches.
- They indicate that the Fibre Channel Boot Driver has loaded and there is an entry in the FCNS databases of the switches for Fabric A and Fabric B.
- They indicate that the Fibre Channel Boot Driver has loaded and failed to reach the storage controller on either Fabric A and Fabric B switches

QUESTION 3

Which two maintenance policy options can you use to specify when the Cisco UCS Manager deploys a service profile change? (Choose two.)

- A. when acknowledged by any user
- B. immediately
- C. on the next reboot
- D. when acknowledged by a user with root privileges
- E. when acknowledged by a user with administrator privileges



Correct Answer: BE

QUESTION 4

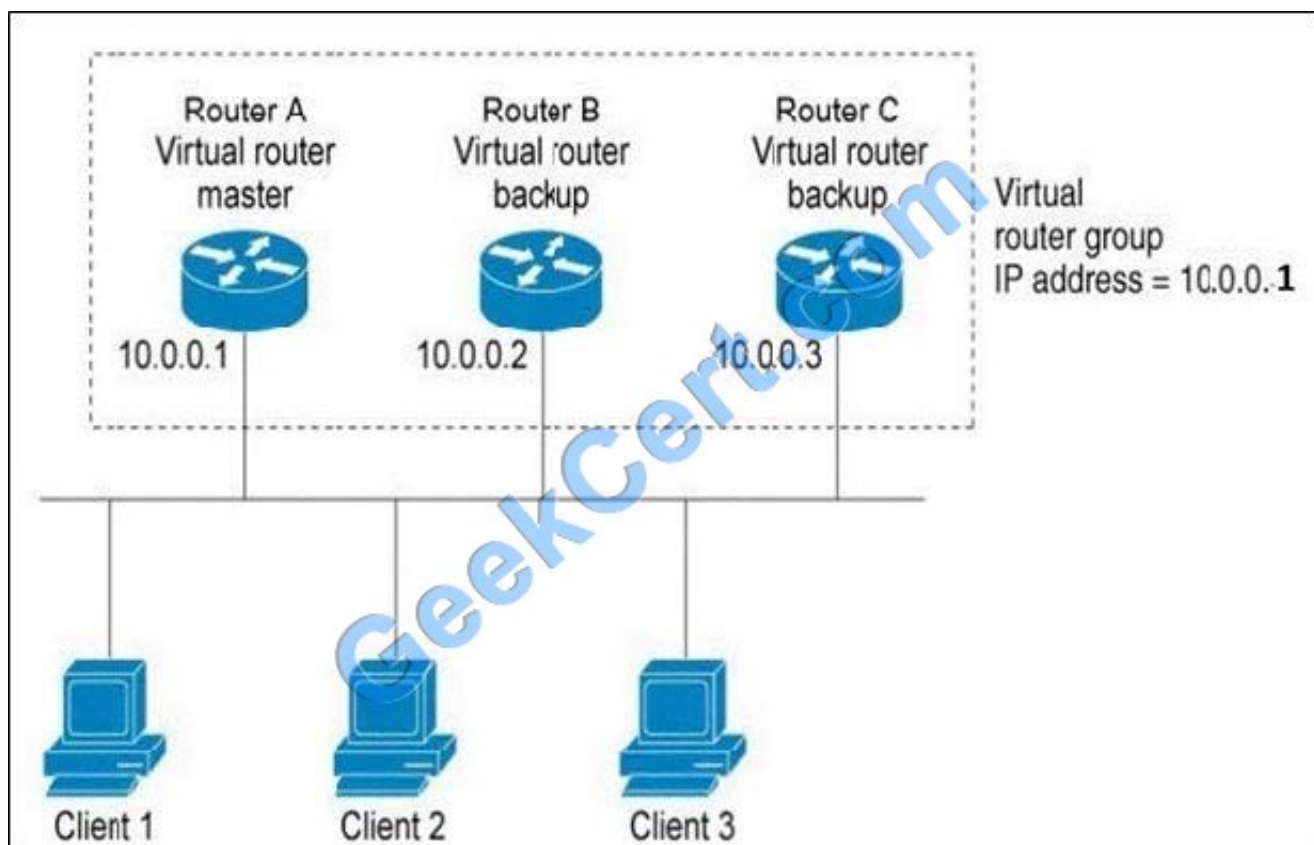
Which statement is true regarding LACP configuration?

- A. With LACP, you can bundle up to 16 interfaces in a channel group.
- B. LACP configuration is global and can be only configured by admin.
- C. After removing LACP configuration, you need to reboot the device.
- D. You can disable LACP while any LACP configurations are present.

Correct Answer: A

QUESTION 5

Refer to the exhibit.



Which statement about the topology is true?

- A. Traffic to and from LAN clients is sent through the master router only.
- B. Clients 1, Client 2, and Client 3 are configured to have the default gateway IP address of 10.0.0.1.



C. If Router A fails, the highest interface IP address backup router becomes the master.

D. Multiple VRRP groups are configured on each router.

Correct Answer: A

[Latest 300-180 Dumps](#)

[300-180 Study Guide](#)

[300-180 Exam Questions](#)



To Read the [Whole Q&As](#), please purchase the [Complete Version](#) from [Our website](#).

Try our product !

100% Guaranteed Success
100% Money Back Guarantee
365 Days Free Update
Instant Download After Purchase
24x7 Customer Support
Average 99.9% Success Rate
More than 800,000 Satisfied Customers Worldwide
Multi-Platform capabilities - [Windows](#), [Mac](#), [Android](#), [iPhone](#), [iPod](#), [iPad](#), [Kindle](#)

We provide exam PDF and VCE of Cisco, Microsoft, IBM, CompTIA, Oracle and other IT Certifications. You can view Vendor list of All Certification Exams offered:

<https://www.geekcert.com/allproducts>

Need Help

Please provide as much detail as possible so we can best assist you.
To update a previously submitted ticket:



 <p>One Year Free Update Free update is available within One Year after your purchase. After One Year, you will get 50% discounts for updating. And we are proud to boast a 24/7 efficient Customer Support system via Email.</p>	 <p>Money Back Guarantee To ensure that you are spending on quality products, we provide 100% money back guarantee for 30 days from the date of purchase.</p>	 <p>Security & Privacy We respect customer privacy. We use McAfee's security service to provide you with utmost security for your personal information & peace of mind.</p>
---	---	--

Any charges made through this site will appear as Global Simulators Limited.
All trademarks are the property of their respective owners.
Copyright © geekcert, All Rights Reserved.