



300-207^{Q&As}

Implementing Cisco Threat Control Solutions

Pass Cisco 300-207 Exam with 100% Guarantee

Free Download Real Questions & Answers **PDF** and **VCE** file from:

<https://www.geekcert.com/300-207.html>

100% Passing Guarantee
100% Money Back Assurance

Following Questions and Answers are all new published by Cisco
Official Exam Center

-  **Instant Download** After Purchase
-  **100% Money Back** Guarantee
-  **365 Days** Free Update
-  **800,000+** Satisfied Customers





QUESTION 1

The Web Cache Communication Protocol (WCCP) is a content-routing protocol that can facilitate the redirection of traffic flows in real time. Your organization has deployed WCCP to redirect web traffic that traverses their Cisco Adaptive Security Appliances (ASAs) to their Cisco Web Security Appliances (WSAs).

The simulator will provide access to the graphical user interfaces of one Cisco ASA and one Cisco WSA that are participating in a WCCP service. Not all aspects of the GUIs are implemented in the simulator. The options that have been implemented are sufficient to determine the best answer to each of the questions that are presented.

Your task is to examine the details available in the simulated graphical user interfaces and select the best answer.



Adaptive Security Appliance



Web Security Appliance



ASA-C-DeviceSetup-Interfaces

Cisco ASDM 7.1 for ASA 10.10.2.1

File View Tools Wizards Window Help

Home Configuration Monitoring Save Refresh Back Forward Help


Device Setup

- Startup Wizard
- Interfaces
- Routing
 - Static Routes
 - Route Maps
 - Prefix Rules
 - CSPF
 - CSPFv3
 - RIP
 - EIGRP
 - Multicast
 - Proxy ARP/Neighbor Discover
- Device Name/Password
- System Time
- EtherChannel

Configuration > Device Setup > Interfaces

Interface	Name	State	Security Level	IP Address	Subnet Mask Prefix Length	VLAN	Gr
GigabitEthernet0/0	outside	Enabled	0	192.0.2.1	255.255.255.0	native	
GigabitEthernet0/1		Enabled				native	
GigabitEthernet0/1:4	inside	Enabled	100	10.10.1.1	255.255.255.0	vlan4	
GigabitEthernet0/1:250	Guest	Enabled	30	10.10.250.1	255.255.255.0	vlan250	
GigabitEthernet0/2	DMZ	Enabled	50	172.16.1.1	255.255.255.0	native	
GigabitEthernet0/3	Site-To...	Enabled	50	172.16.2.1	255.255.255.0	native	
GigabitEthernet0/4		Disabled				native	
GigabitEthernet0/5		Disabled				native	
Management0/0	manage...	Enabled	30	10.10.2.1	255.255.255.0	nat	

GeekCert.com





Monitoring > Properties > WCCP > Service Groups

Service Group: 10

Display Mode: --None--

Hash Settings

Destination Ip Address: Destination Port:

Source Ip Address: Source Port:

Global WCCP information:

Router information:

Router Identifier: 102.0.2.1

Protocol Version: 2.0

Service Identifier: 10

Number of Cache Engines: 1

Number of routers: 1

Total Packages Redirected: 5137

Redirect access-list: WCCP-Redirection

Total Connections Denied Redirect: 0

Total Packages Unassigned: 0

Group access-list: -none-

Total Messages Denied to Group: 0

Total Authentication failures: 0

WSA-Network-interfaces

Cisco S100V
Web Security Virtual Appliance

Logged in as: admin on wsa.secure-x.local

Reporting Web Security Manager Security Services Network System Administration

Interfaces

Interfaces:	Ethernet Port	IP Address	Netmask	Hostname
M1		10.10.2.50	255.255.255.0	wsa-mgmt.secure-x.local
P1		10.10.1.50	255.255.255.0	wsa.secure-x.local

Separate Routing for Management Services: Separate routing (M1 port restricted to appliance management services only)

Appliance Management Services: HTTP on port 80, HTTPS on port 443, Redirect HTTP request to HTTPS

Traffic Monitor Wiring: Duplex: AR: T1 (In/Out)

Copyright © 2009-2012 Cisco Systems, Inc. All rights reserved.

Which of the following is true with respect to the version of WCCP configured on the Cisco ASA and the Cisco WSA?

- A. Both are configured for WCCP v1.
- B. Both are configured for WCCP v2.



C. Both are configured for WCCP v3.

D. There is a WCCP version mismatch between the Cisco WSA and the Cisco ASA.

Correct Answer: B

ASA version shows as version 2.0:

ASA-M-Prop-WCCP-ServGrp-None

```

Global WCCP information:
  Router information:
    Router Identifier:      192.0.2.1
    Protocol Version:      2.0

  Service Identifier: 10
    Number of Cache Engines: 1
    Number of Routers:     1
    Total Packets Redirected: 5137
    Redirect access-list:  WCCP-Redirection
    Total Connections Denied Redirect: 0
    Total Packets Unassigned: 0
    Group access-list:     -none-
    Total Messages Denied to Group: 0
    Total Authentication failures: 0
  
```

WSA also shows version 2 is being used:

WSA-Network-TransparentRedir

Cisco S100V Web Security Virtual Appliance

Reporting | Web Security Manager | Security Services | Network | System Administration

Transparent Redirection

Transparent Redirection Device

Type: WCCP v2 Router

WCCP v2 Services

Service Profile Name	Service ID	Router IP Addresses	Ports	Delete
WebTrafficFromASA	10	10.10.1.1	80,443	

QUESTION 2

Which technology is used to improve business-critical application performance?

A. Application Visibility and Control

B. Intrusion Prevention Services



- C. Advanced Malware Protection
- D. TrustSec

Correct Answer: A

QUESTION 3

An ASA with an IPS module must be configured to drop traffic matching IPS signatures and block all traffic if the module fails. Which describes the correct configuration?

- A. Inline Mode, Permit Traffic
- B. Inline Mode, Close Traffic
- C. Promiscuous Mode, Permit Traffic
- D. Promiscuous Mode, Close Traffic

Correct Answer: B

QUESTION 4

Instructions

You can click the grey buttons at the bottom of this frame to view the different windows.

To minimize the window, click the [-]. To move the window, click the title bar and drag the window.

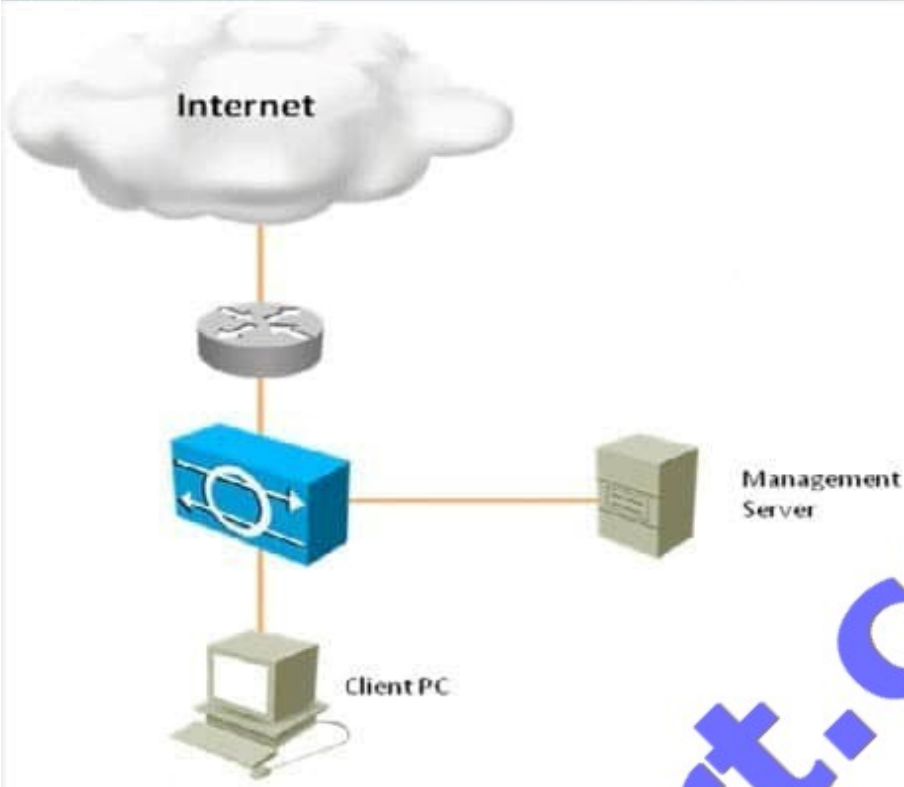
Scenario

Using Cisco IPS Device Manager (IDM), answer the multiple choice questions.





Topology



The screenshot shows the Cisco IDM 7.0 web interface. The main content area is divided into several sections:

- Sensor Information - sensor:** Updated 1:46:22 PM. Heat Name: ips, IP Address: 172.26.26.53, IPS Version: 7.0(2)E3, Device Type: IPS-4240-K9, In Bypass: No, Total Memory: 1984 MB, Total Sensing Interfaces: 4, Total Data Storage: 788 MB, Analysis Engine Status: Running Normally.
- Sensor Health - sensor:** Updated 1:46:22 PM. Contains two circular gauges: "Sensor Health" (Critical) and "Network Security Health" (Normal).
- License - sensor:** Updated 1:46:22 PM. License Status: Not expired until Aug 27, 2011 4:59:59 PM MST, Signature version: 425.0, Released On: Aug 16, 2009 5:03:00 PM MST, Applied On: Oct 15, 2009 12:43:54 PM MST, Released On: Oct 15, 2009 1:09:06 AM MST, Applied On: Jul 13, 2010 3:05:43 AM MST, Auto Update Status: Not Checked.
- CPU, Memory & Load - sensor:** Updated 1:46:22 PM. Includes a gauge for "Inspection Load" and bar charts for CPU Usage (1%), Memory Usage (System: 73%, Analysis Engine: 23%), and Disk Usage (boot: 51%, system: 44%, application log: 24%).
- Interface Status - sensor:** Updated 1:46:22 PM. Table showing interface details:

Interface	Link	Enabled	Speed (...	Mode	Received Packets	Transmitted Packets
GigabitEthernet0/0	up	yes	100	inline-V...	7,157,393	6,467,380
GigabitEthernet0/1	d...	yes	unpaired		0	0



Which three statements about the Cisco IPS appliance configurations are true? (Choose three.)

- A. The maximum number of denied attackers is set to 10000.
- B. The block action duration is set to 3600 seconds.
- C. The Meta Event Generator is globally enabled.
- D. Events Summarization is globally disabled.
- E. Threat Rating Adjustment is globally disabled.

Correct Answer: ABC

QUESTION 5

What can Cisco Prime Security Manager (PRSM) be used to achieve?

- A. Configure and Monitor Cisco CX Application Visibility and Control, web filtering, access and decryption policies
- B. Configure Cisco ASA connection limits
- C. Configure TCP state bypass in Cisco ASA and IOS
- D. Configure Cisco IPS signature and monitor signature alerts
- E. Cisco Cloud Security on Cisco ASA

Correct Answer: A

[300-207 PDF Dumps](#)

[300-207 VCE Dumps](#)

[300-207 Exam Questions](#)



To Read the [Whole Q&As](#), please purchase the [Complete Version](#) from [Our website](#).

Try our product !

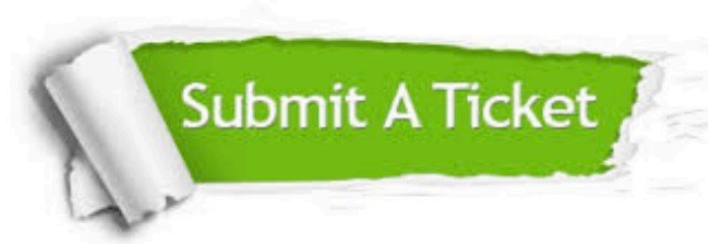
100% Guaranteed Success
100% Money Back Guarantee
365 Days Free Update
Instant Download After Purchase
24x7 Customer Support
Average 99.9% Success Rate
More than 800,000 Satisfied Customers Worldwide
Multi-Platform capabilities - [Windows](#), [Mac](#), [Android](#), [iPhone](#), [iPod](#), [iPad](#), [Kindle](#)

We provide exam PDF and VCE of Cisco, Microsoft, IBM, CompTIA, Oracle and other IT Certifications.
You can view Vendor list of All Certification Exams offered:

<https://www.geekcert.com/allproducts>

Need Help

Please provide as much detail as possible so we can best assist you.
To update a previously submitted ticket:



 <p>One Year Free Update Free update is available within One Year after your purchase. After One Year, you will get 50% discounts for updating. And we are proud to boast a 24/7 efficient Customer Support system via Email.</p>	 <p>Money Back Guarantee To ensure that you are spending on quality products, we provide 100% money back guarantee for 30 days from the date of purchase.</p>	 <p>Security & Privacy We respect customer privacy. We use McAfee's security service to provide you with utmost security for your personal information & peace of mind.</p>
---	---	--

Any charges made through this site will appear as Global Simulators Limited.
All trademarks are the property of their respective owners.
Copyright © geekcert, All Rights Reserved.