



# 300-208<sup>Q&As</sup>

Implementing Cisco Secure Access Solutions

**Pass Cisco 300-208 Exam with 100% Guarantee**

Free Download Real Questions & Answers **PDF** and **VCE** file from:

<https://www.geekcert.com/300-208.html>

100% Passing Guarantee  
100% Money Back Assurance

Following Questions and Answers are all new published by Cisco  
Official Exam Center

-  **Instant Download** After Purchase
-  **100% Money Back** Guarantee
-  **365 Days** Free Update
-  **800,000+** Satisfied Customers

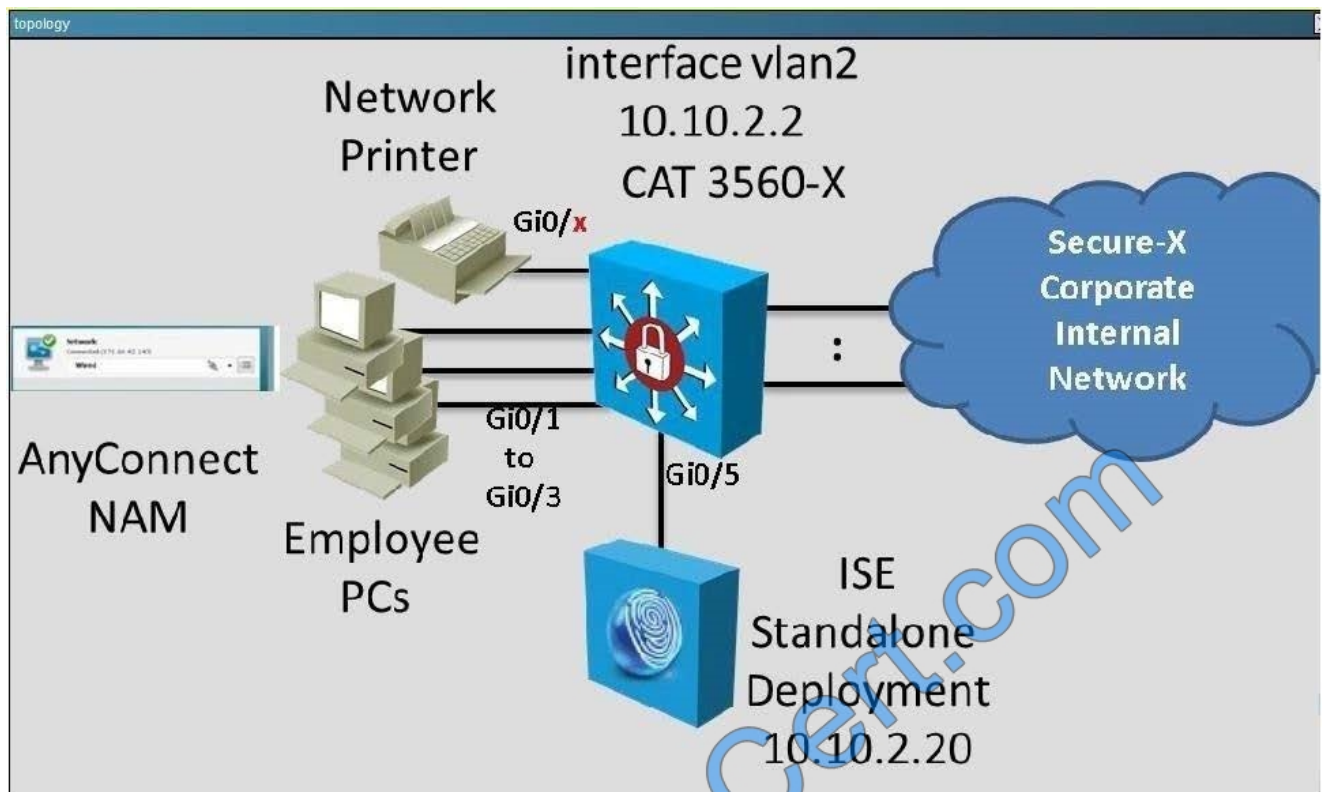




## QUESTION 1

### Hotspot Question

In this simulation, you are task to examine the various authentication events using the ISE GUI. For example, you should see events like Authentication succeeded. Authentication failed and etc...



home

Identity Services Engine

Metrics

Total Endpoints: 5  
Active Endpoints: 2  
Active Guests: 0  
Profiled Endpoints: 5

System Summary

| Name | Utilization and Latency 24h  |
|------|------------------------------|
| ise  | CPU Memory Authentication... |

Alarms

| Name                           | Occurrences | Last Occur   |
|--------------------------------|-------------|--------------|
| Configuration Changed          | 787 times   | 41 mins ...  |
| Authentication Inactivity      | 1042 times  | 2 hrs 15 ... |
| Insufficient Virtual Machin... | 527 times   | 2 hrs 25 ... |
| RADIUS Request Dropped         | 358 times   | 14 hrs 4 ... |
| No Accounting Start            | 237 times   | 14 hrs 4 ... |
| Supplicant stopped respo...    | 21 times    | 16 hrs 4 ... |
| No Configuration Backup ...    | 187 times   | 23 hrs 2 ... |

Authentications

Passed 12  
Failed 71

Profiler Activity

Total 9

Posture Compliance

Total 0

Which two statements are correct regarding the event that occurred at 2014-05-07 00:16:55.393? (Choose two.)

A. The failure reason was user entered the wrong username.



B. The supplicant used the PAP authentication method.

C. The username entered was it1.

D. The user was authenticated against the Active Directory then also against the ISE internal user database and both fails.

E. The NAS switch port where the user connected to has a MAC address of 44:03:A7:62:41:7F

F. The user is being authenticated using 802.1X.

G. The user failed the MAB.

H. The supplicant stopped responding to ISE which caused the failure.

Correct Answer: CF

Event Details:



it1 failed

### Overview

|                              |                            |
|------------------------------|----------------------------|
| Event                        | 5400 Authentication failed |
| Username                     | it1                        |
| Endpoint Id                  | 44:03:A7:62:41:7F          |
| Endpoint Profile             |                            |
| Authorization Profile        |                            |
| ISEPolicySetName             | Default                    |
| IdentitySelectionMatchedRule | Default                    |

### Authentication Details

|                    |  |
|--------------------|--|
| Source Timestamp   | 2014-05-07 00:16:55.392  |
| Received Timestamp | 2014-05-07 00:16:55.393  |
| Policy Server      | ise  |
| Event              | 5400 Authentication failed   |
| Failure Reason     | 24408 User authentication against Active Directory failed since user has entered the wrong password  |
| Resolution         | Check the user password credentials. If the RADIUS request is using PAP for authentication, also check the Shared Secret configured for the Network Device |
| Root cause         | User authentication against Active Directory failed since user has entered the   |

it1 failed

### Authentication Details

|                         |  |
|-------------------------|--|
| Source Timestamp        | 2014-05-07 00:16:55.392  |
| Received Timestamp      | 2014-05-07 00:16:55.393  |
| Policy Server           | ise  |
| Event                   | 5400 Authentication failed   |
| Failure Reason          | 24408 User authentication against Active Directory failed since user has entered the wrong password  |
| Resolution              | Check the user password credentials. If the RADIUS request is using PAP for authentication, also check the Shared Secret configured for the Network Device |
| Root cause              | User authentication against Active Directory failed since user has entered the wrong password  |
| Username                | it1  |
| User type               |  |
| Endpoint Id             | 44:03:A7:62:41:7F  |
| Endpoint Profile        |  |
| IP Address              |  |
| Identity Store          | AD1  |
| Identity Group          |  |
| Audit Session Id        | 0A0A0202000000D0070A388F   |
| Authentication Method   | dot1x  |
| Authentication Protocol | PEAP (EAP_MSCHAPv2)  |



#### QUESTION 2

Which three are required steps to enable SXP on a Cisco ASA? (Choose three).

- A. configure AAA authentication
- B. configure password
- C. issue the aaa authorization command aaa-server group command
- D. configure a peer
- E. configure TACACS
- F. issue the cts sxp enable command

Correct Answer: BDF

---

#### QUESTION 3

which is the default behavior of 802.1x

- A. monitor-mode
- B. bypass-mode
- C. close-mode
- D. low impact-mode

Correct Answer: C

---

#### QUESTION 4

In AAA, what function does authentication perform?

- A. It identifies the actions that the user can perform on the device.
- B. It identifies the user who is trying to access a device.
- C. It identifies the actions that a user has previously taken.
- D. It identifies what the user can access.

Correct Answer: B

---

#### QUESTION 5

Which statement about a distributed Cisco ISE deployment is true?



- A. It can support up to two monitoring Cisco ISE nodes for high availability.
- B. It can support up to three load-balanced Administration ISE nodes.
- C. Policy Service ISE nodes can be configured in a redundant failover configuration.
- D. The Active Directory servers of Cisco ISE can be configured in a load-balanced configuration.

Correct Answer: A

[300-208 PDF Dumps](#)

[300-208 VCE Dumps](#)

[300-208 Study Guide](#)



To Read the [Whole Q&As](#), please purchase the [Complete Version](#) from [Our website](#).

## Try our product !

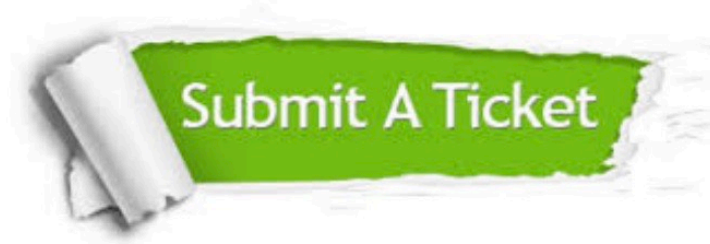
100% Guaranteed Success  
100% Money Back Guarantee  
365 Days Free Update  
Instant Download After Purchase  
24x7 Customer Support  
Average 99.9% Success Rate  
More than 800,000 Satisfied Customers Worldwide  
Multi-Platform capabilities - [Windows](#), [Mac](#), [Android](#), [iPhone](#), [iPod](#), [iPad](#), [Kindle](#)

We provide exam PDF and VCE of Cisco, Microsoft, IBM, CompTIA, Oracle and other IT Certifications.  
You can view Vendor list of All Certification Exams offered:

<https://www.geekcert.com/allproducts>

## Need Help

Please provide as much detail as possible so we can best assist you.  
To update a previously submitted ticket:



|   |   |  |
|---|---|--|
|  <p><b>One Year Free Update</b><br/>Free update is available within One Year after your purchase. After One Year, you will get 50% discounts for updating. And we are proud to boast a 24/7 efficient Customer Support system via Email.</p> |  <p><b>Money Back Guarantee</b><br/>To ensure that you are spending on quality products, we provide 100% money back guarantee for 30 days from the date of purchase.</p> |  <p><b>Security &amp; Privacy</b><br/>We respect customer privacy. We use McAfee's security service to provide you with utmost security for your personal information &amp; peace of mind.</p> |
|---|---|--|

Any charges made through this site will appear as Global Simulators Limited.  
All trademarks are the property of their respective owners.  
Copyright © geekcert, All Rights Reserved.