



300-370^{Q&As}

Troubleshooting Cisco Wireless Enterprise Networks

Pass Cisco 300-370 Exam with 100% Guarantee

Free Download Real Questions & Answers **PDF** and **VCE** file from:

<https://www.geekcert.com/300-370.html>

100% Passing Guarantee
100% Money Back Assurance

Following Questions and Answers are all new published by Cisco
Official Exam Center

-  **Instant Download** After Purchase
-  **100% Money Back** Guarantee
-  **365 Days** Free Update
-  **800,000+** Satisfied Customers





QUESTION 1

Refer to the exhibit. Which configuration must be addresses to correct this issue?

```
*Dec 12 00:59:44.069: %CAPMAP-3-EVENTLOG: Go Join the next controller
*Dec 12 00:59:44.069: %CAPMAP-3-EVENTLOG: Selected MWAR 'REMOTE' (index 0).
*Dec 12 00:59:44.069: %CAPMAP-3-EVENTLOG: Ap mgr count=1
*Dec 12 00:59:44.069: %CAPMAP-3-EVENTLOG: Go Join a capwap controller
*Dec 12 00:59:44.069: %CAPMAP-3-EVENTLOG: Choosing AP Mgr with index 0, IP =
0xA0AC8FE , Load = 4..
*Dec 12 00:59:44.069: %CAPMAP-3-EVENTLOG: Synchronizing time with AC time.
*Dec 12 00:58:39.324: %PKI-3-CERTIFICATE_INVALID_NOT_YET_VALID: Certificate
chain validation has failed. The certificate (SN: 46469F4C0000000A4C34) is
not yet valid Validity period starts on 22:50:55 UTC Aug 30 2012
*Dec 12 00:58:39.324: %CAPWAP-3-ERRORLOG: Certificate verification failed!
*Dec 12 00:58:39.324: DTLS_CLIENT_ERROR: ../capwap/capwap_wtp_dtls.c:352
Certificate verified failed!
*Dec 12 00:58:39.324: %DTLS-4-BAD-CERT: Certificate verification failed. Peer
IP: 10.10.200.254
*Dec 12 00:58:39.324: %DTLS-5-SEND_ALERT: Send FATAL : Bad certificate Alert
to 10.10.200.254:5246
*Dec 12 00:58:39.324: %DTLS-3-BAD_RECORD: Erroneous record received from
10.10.200.254: Malformed Certificate
*Dec 12 00:58:39.324: %DTLS-5-SEND_ALERT: Send FATAL: Close notify Alert to
10.10.200.254:5246
*Dec 12 00:58:39.324: %CAPWAP-3-ERRORLOG: Invalid event 38 & state 3
combination
```

- A. self-signed certificate
- B. DHCP Option 43
- C. Network Time Protocol
- D. AP authorization list

Correct Answer: A

QUESTION 2

A user reports being unable to connect to a server with a certain program while connected to wireless. Which troubleshooting methodology can be used to begin the troubleshooting process?

- A. top-down
- B. shoot from the hip
- C. follow the path



- D. bottom-up
- E. divide and conquer

Correct Answer: A

References:

QUESTION 3

A wireless engineer has completed the configuration of a new WLAN on the existing Cisco wireless infrastructure. During testing he found that the wireless clients authenticate and received the correct ip address from the switch, but they were not able to access any of the internal or external resources. Which action will resolve the issue?

- A. Configure static ip addresses for the wireless clients.
- B. Configure the default-router on the switch DHCP pool.
- C. Configure option 82 on the switch DHCP pool.
- D. Configure a dns-server on the switch DHCP pool.

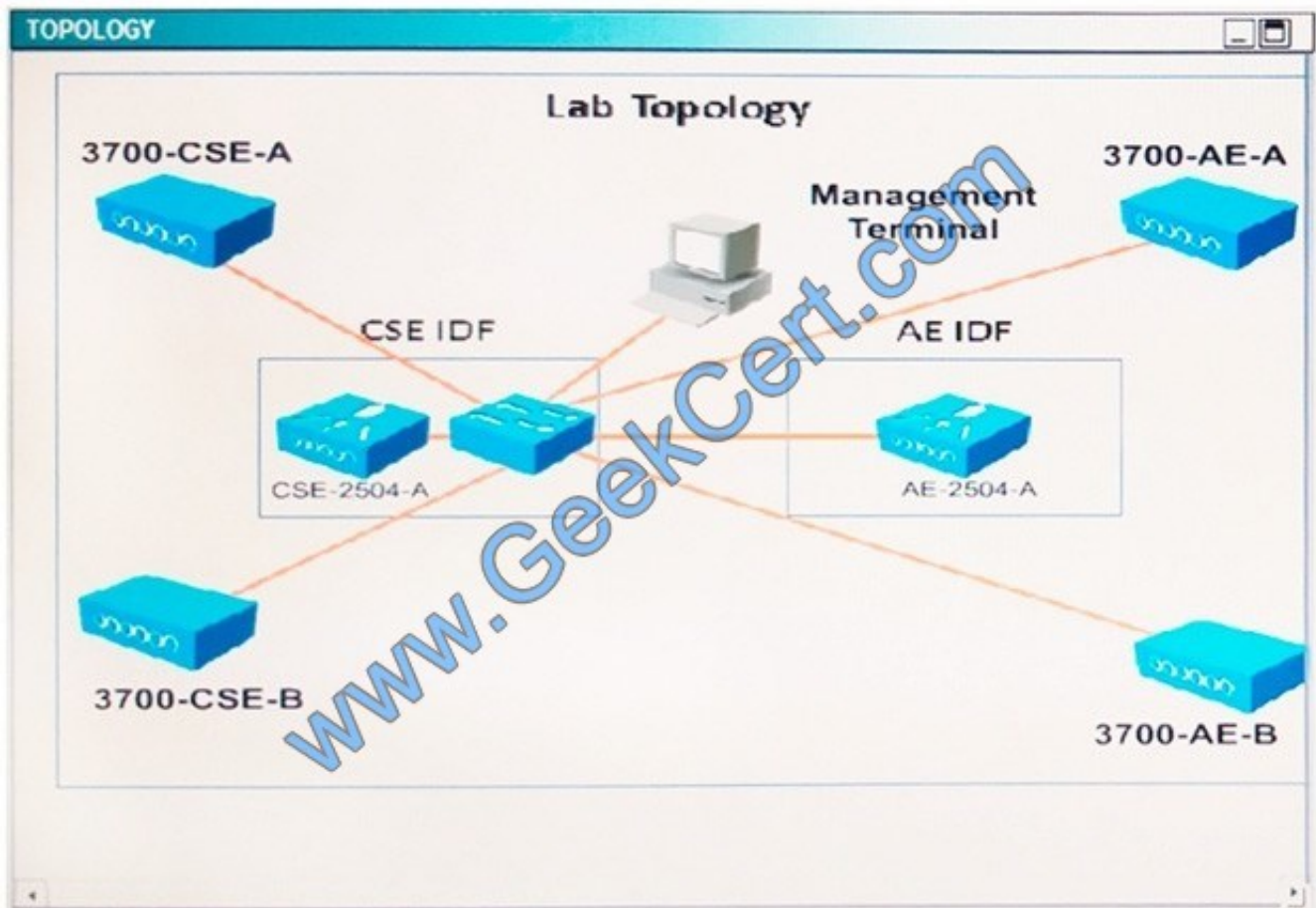
Correct Answer: C

QUESTION 4

Scenario The big Engineering IT team has been in the lab to test some new features that the existing network does not support. The AP Groups, AP Failover, and Local Web Auth features are having problems. In this test environment, the controllers support the only Composite Structural Engineering and Aerodynamic Engineering groups. All SSIDs must omit the department name.

Refer to the exhibit. The diagram is the floor plan for the Big Engineering office and the distribution of the departments. These tables show how the controllers have been configured.

Note, not all menu items, text boxes, or radio buttons are active.



BE-GA Controller Management Interfaces

Name	IP address	Gateway	DHCP Interface
CSE-2504A	192.168.2.98/24	192.168.2.1	192.168.2.98
AE-2504A	192.168.3.98/24	192.168.3.1	192.168.3.98
HF-2504A	192.168.4.98/24	192.168.4.1	192.168.4.98

Composite and Structural Engineering (CSE) WLANs

Profile Name	SSID
CSE-Engineering	CSE-Engineering
CSE-Contractors	CSE-Contractors
CSE-Employees	CSE-Employees

AP Groups-CSE-WLANs



WLANs	APs
CSE-Engineering	3700-CSE-A
CSE-Contractors	3700-CSE-B
CSE-Employees	

AE-User Names and Passwords

User Name	Password
Joan Smith	aetest
Carol Black	aetest

You review the configuration of the test network controller. Which four changes must be made to resolve the problems? (Choose four.)

- A. Change the High Availability Primary Controller Management Interfaces IP address for access point 3700-CSE-A.
- B. Remove the current WLANs and replace them with WLANs that have the same SSID names as on the AE-2504A controller.
- C. Add the Local Net User names and passwords.
- D. Change the Layer2 security to none and Layer3 Security to Web Policy for the CSE-Contractors WLAN.
- E. Remove the current WLAN from the CSE-WLAN AP Group and add all three of the WLANs configured in the CSE-2504A.
- F. Add the CSE APs to the CSE-WLANs AP-Group.
- G. Change the High Availability Secondary Controller management Interface IP address for access point 3700-CSE-B.
- H. Change the High Availability Primary Controller Name for access point 3700-CSE-B.

Correct Answer: BCDF

QUESTION 5

Refer to the exhibit.



Which statement describes how the Band Select feature works on the wireless controller?

- A. The access point uses the load balancing feature to move the clients to 5 Ghz.
- B. The access point changes the DTIM period on the 2.4 Ghz band.
- C. The access point recommends the band in the association response to the client.
- D. The access point ignores and delays the probe request of the client on the 2.4 Ghz.

Correct Answer: C

[300-370 PDF Dumps](#)

[300-370 VCE Dumps](#)

[300-370 Practice Test](#)



To Read the [Whole Q&As](#), please purchase the [Complete Version](#) from [Our website](#).

Try our product !

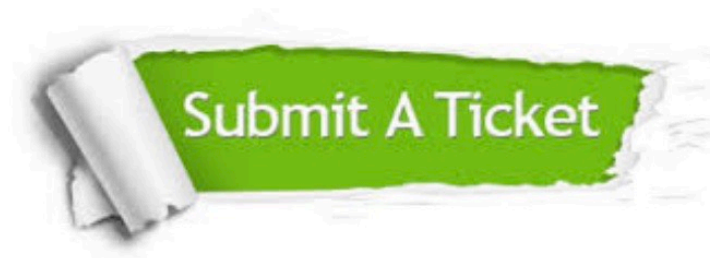
100% Guaranteed Success
100% Money Back Guarantee
365 Days Free Update
Instant Download After Purchase
24x7 Customer Support
Average 99.9% Success Rate
More than 800,000 Satisfied Customers Worldwide
Multi-Platform capabilities - [Windows](#), [Mac](#), [Android](#), [iPhone](#), [iPod](#), [iPad](#), [Kindle](#)

We provide exam PDF and VCE of Cisco, Microsoft, IBM, CompTIA, Oracle and other IT Certifications.
You can view Vendor list of All Certification Exams offered:

<https://www.geekcert.com/allproducts>

Need Help

Please provide as much detail as possible so we can best assist you.
To update a previously submitted ticket:



 <p>One Year Free Update Free update is available within One Year after your purchase. After One Year, you will get 50% discounts for updating. And we are proud to boast a 24/7 efficient Customer Support system via Email.</p>	 <p>Money Back Guarantee To ensure that you are spending on quality products, we provide 100% money back guarantee for 30 days from the date of purchase.</p>	 <p>Security & Privacy We respect customer privacy. We use McAfee's security service to provide you with utmost security for your personal information & peace of mind.</p>
---	---	--

Any charges made through this site will appear as Global Simulators Limited.
All trademarks are the property of their respective owners.
Copyright © geekcert, All Rights Reserved.