



# 300-415<sup>Q&As</sup>

Implementing Cisco SD-WAN Solutions (ENSDWI)

## Pass Cisco 300-415 Exam with 100% Guarantee

Free Download Real Questions & Answers **PDF** and **VCE** file from:

<https://www.geekcert.com/300-415.html>

100% Passing Guarantee  
100% Money Back Assurance

Following Questions and Answers are all new published by Cisco  
Official Exam Center

- ⚙️ **Instant Download** After Purchase
- ⚙️ **100% Money Back** Guarantee
- ⚙️ **365 Days** Free Update
- ⚙️ **800,000+** Satisfied Customers





### QUESTION 1

What is a requirement for a WAN Edge to reach vManage, vBond, and vSmart controllers in a data center?

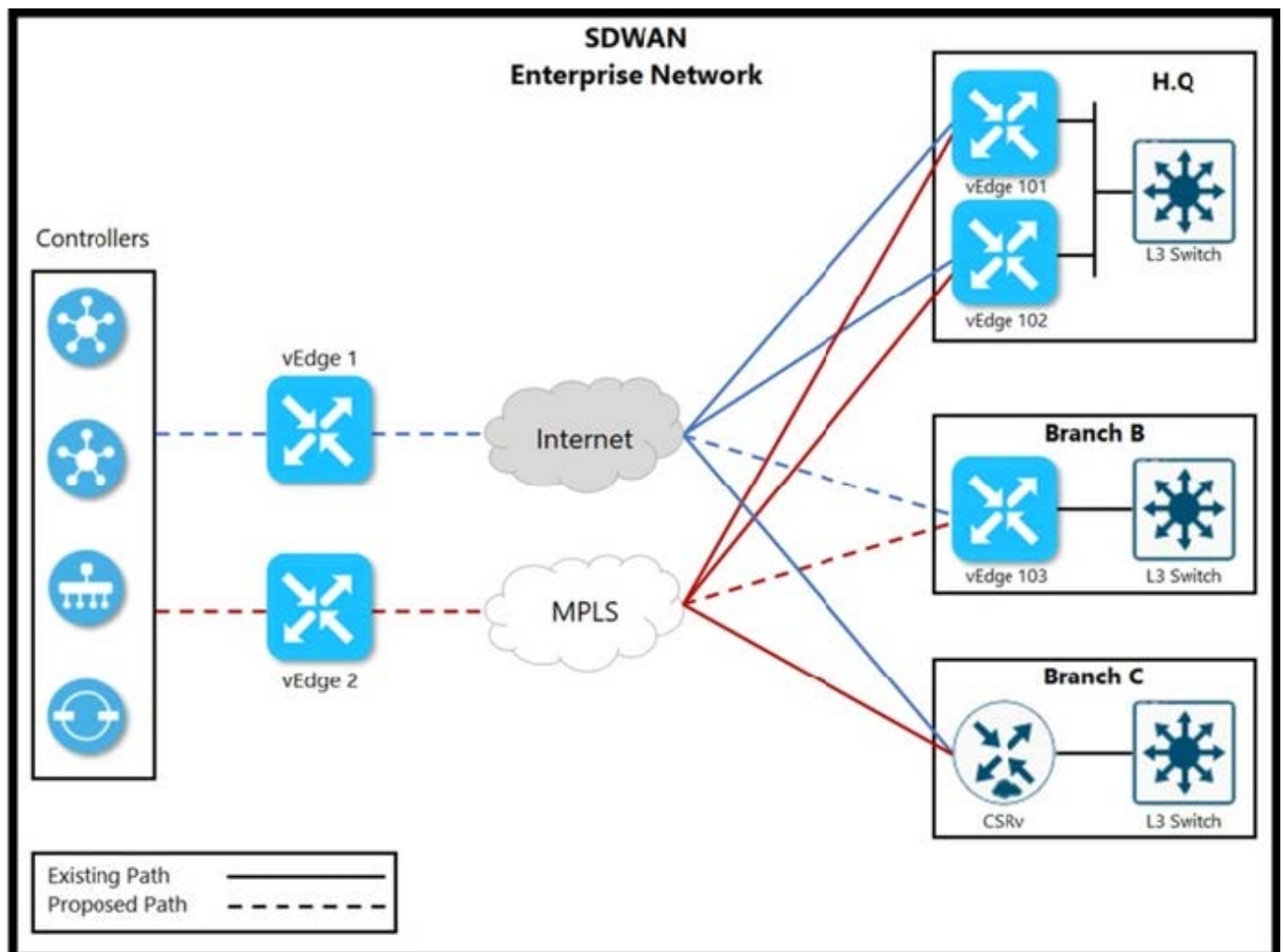
- A. OMP
- B. IGP
- C. QoS
- D. TLS

Correct Answer: B

<https://www.cisco.com/c/dam/en/us/td/docs/solutions/CVD/SDWAN/sdwan-wan-edge-onboarding-deploy-guide-2020nov.pdf>

### QUESTION 2

Refer to the exhibit.





The network team must configure branch B WAN Edge device 103 to establish dynamic full-mesh IPsec tunnels between all colors with branches over MPLS and Internet circuits. The branch is configured with:

```
viptela-system:system
  device-model          vedge-cloud
  host-name              vEdge-Cloud
  location               CA
  system-ip              10.4.4.4
  domain-id              1
  site-id                1
  organization-name ABC
  clock timezone US/Newyork
  vbond 10.10.0.1 port 12346

omp
  no shutdown
  graceful-restart

vpn 512
  interface eth0
  ip address 10.0.0.1/24
  no shutdown
```

Which configuration meets the requirement?



A. **vpn 0**  
**interface ge0/0**  
description **“Internet Circuit”**  
ip address **209.165.200.225/30**  
tunnel-interface  
encapsulation ipsec  
color public-internet  
allow-service all

**interface ge0/1**  
description **“MPLS”**  
ip address **10.10.0.101/30**  
tunnel-interface  
encapsulation ipsec  
color mpls  
allow-service all

B. **vpn 0**  
**interface ge0/0**  
description **“Internet Circuit”**  
ip address **209.165.200.225/30**  
tunnel-interface  
encapsulation ipsec  
color public-internet  
allow-service all

**vpn 1**  
**interface ge0/1**  
description **“MPLS”**  
ip address **10.10.0.101/30**  
tunnel-interface  
encapsulation ipsec  
color mpls  
allow-service all

C. **vpn 0**  
**interface ge0/0**  
description **“Internet Circuit”**  
ip address **209.165.200.225/30**  
tunnel-interface  
encapsulation ipsec  
color public-internet restrict  
group 500  
allow-service all

**interface ge0/1**  
description **“MPLS”**  
ip address **10.10.0.101/30**  
tunnel-interface  
encapsulation ipsec  
color mpls restrict  
group 50  
allow-service all



D.

```
vpn 0
interface ge0/0
description "Internet Circuit"
ip address 209.165.200.225/30
tunnel-interface
encapsulation ipsec
color public-internet restrict
allow-service all

interface ge0/1
description "MPLS"
ip address 10.10.0.101/30
tunnel-interface
encapsulation ipsec
color mpls restrict
allow-service all
```

A. Option A

B. Option B

C. Option C

D. Option D

Correct Answer: A

---



---

### QUESTION 3

Which component of the Cisco SD-WAN control plane architecture should be located in a public Internet address space and facilitates NAT-traversal?

- A. WAN Edge
- B. vSmart
- C. vBond
- D. vManage

Correct Answer: C

---

### QUESTION 4

A company deploys a Cisco SD-WAN solution but has an unstable Internet connection. When the link to vSmart comes back up, the WAN Edge router routing table is not refreshed, and some traffic to the destination network is dropped. The headquarters is the hub site, and it continuously adds new sites to the SD-WAN network. An engineer must configure route refresh between WAN Edge and vSmart within 2 minutes.

Which configuration meets this requirement?

- A. `omp no shutdown graceful-restart`

`timers`

`holdtime 120`

- B. `omp no shutdown graceful-restart`

`timers`

`advertisement-interval 120`

- C. `omp`

`no shutdown`

`no graceful-restart`

- D. `omp no shutdown graceful-restart`

`timers`

`eor-timer 120`

Correct Answer: A

---

### QUESTION 5



A network administrator is creating an OMP feature template from the vManage GUI to be applied to WAN edge routers. Which configuration attribute will avoid the redistribution of the routes back into the OMP from the LAN side?

- A. configure "Number of Paths Advertised per Prefix"
- B. configure "Overlay AS Number"
- C. configure "Send Backup Paths"
- D. configure "ECMP limit"

Correct Answer: B

By default, OMP is transparent to BGP even if propagate-aspath is configured. overlay-as is a feature that prepends AS specified as a parameter of this command to the BGP AS\_PATH attribute of routes exported from OMP to BGP. If you configure the same overlay AS number on multiple devices in the overlay network, all these devices are considered to be part of the same AS. As a result, they do not forward any routes that contain the overlay AS number, hence the routing loop is prevented.

[Latest 300-415 Dumps](#)

[300-415 VCE Dumps](#)

[300-415 Exam Questions](#)