



# 300-420<sup>Q&As</sup>

Designing Cisco Enterprise Networks (ENSLD)

## Pass Cisco 300-420 Exam with 100% Guarantee

Free Download Real Questions & Answers **PDF** and **VCE** file from:

<https://www.geekcert.com/300-420.html>

100% Passing Guarantee  
100% Money Back Assurance

Following Questions and Answers are all new published by Cisco  
Official Exam Center

- ⚙️ **Instant Download** After Purchase
- ⚙️ **100% Money Back** Guarantee
- ⚙️ **365 Days** Free Update
- ⚙️ **800,000+** Satisfied Customers



**QUESTION 1**

An engineer must peer with an ISP for internet connectivity using BGP, initially, the engineer wants to receive only specific prefixes from the ISP and a default route. However, the solution must provide the flexibility to add prefixes in the future at short notice. The ISP has a two-week change process in place. Which route filtering solution must the engineer employ?

- A. Request a limited internet routing table and a default route from the ISP and configure the BGP max-limit to 1 with an access list that permits only the specific internet prefixes and blocked networks
- B. Request only the required prefixes and default route be advertised from the ISO with whitelisted networks
- C. Request a full internet routing table and a default route from the ISP and configure inbound route filtering with a prefix list that permits the default route and required prefixes
- D. Configure outbound route filtering on the enterprise and ISP so that the enterprise tell the ISP which prefixes are required

Correct Answer: C

Explanation: anychange on the prefix list, engineer only need to update the prefix list and restart the BGP peer to the ISP. soft-reconfiguration inbound could be used to reduce down time of reset BGP peer, but it require lots of memory and in this case, connection to ISP and tons of route learnt will not be apporitated.

---

**QUESTION 2**

When a first hop redundancy solution is designed, which protocol ensures that load balancing occurs over multiple routers using a single virtual IP address and multiple virtual MAC addresses?

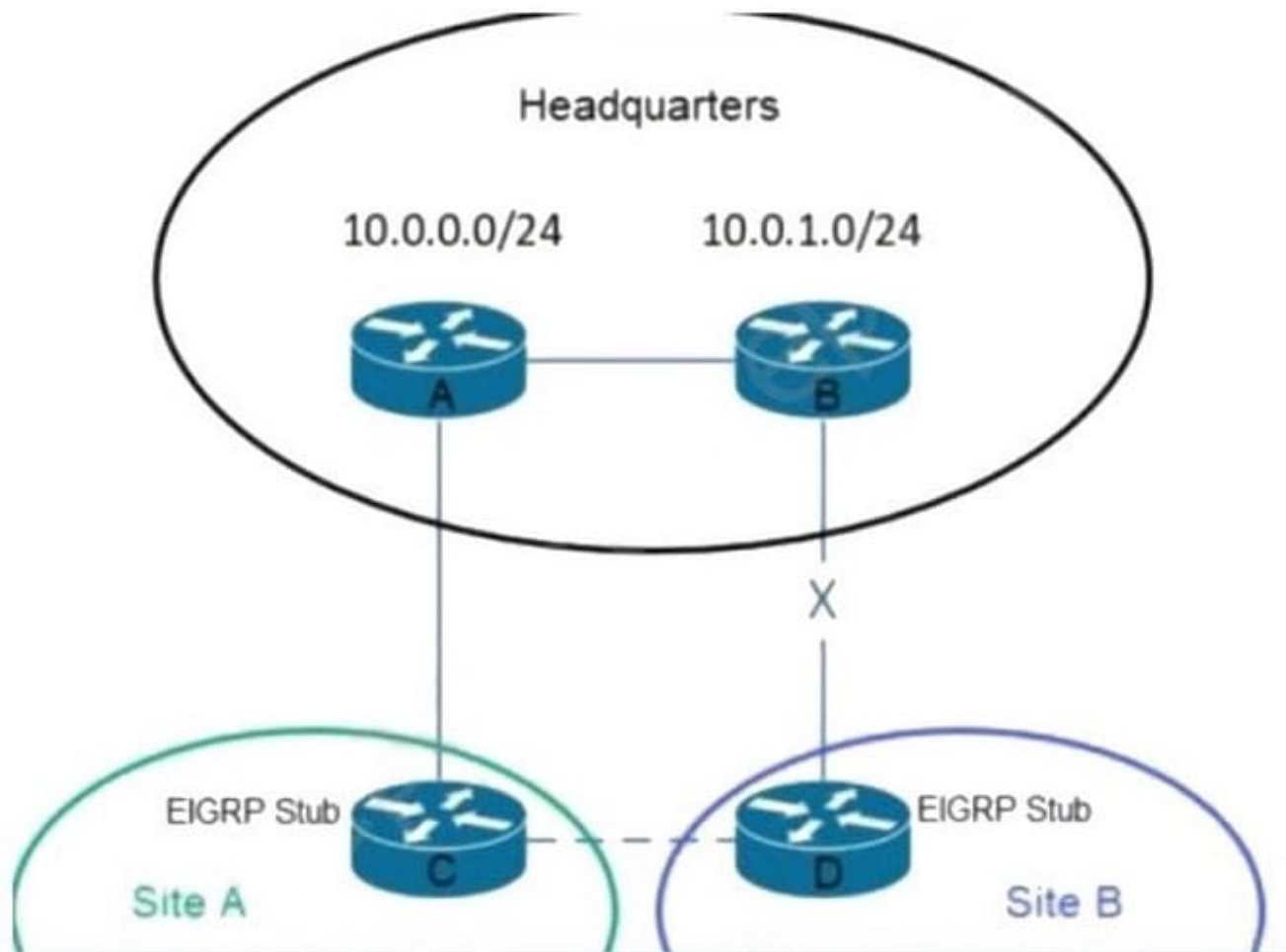
- A. GLBP
- B. IRDP
- C. VRRP
- D. HSRP

Correct Answer: A

---

**QUESTION 3**

Refer to the exhibit.



A network engineer must design a multicast solution based on:

1.

Many-to-many communications between the users and sources

2.

Support of up to 50 multicast sources

3.

Users that must register for streams Which multicast solution must the engineer select?

A. Any Source Multicast

B. Bidirectional PIM

C. Source-Specific Multicast

D. Multicast VPN

Correct Answer: B



#### QUESTION 4

An engineer is looking for a standards-driven YANG model to manage a multivendor network environment. Which model must the engineer choose?

- A. Native
- B. OpenConfig
- C. IETF
- D. IEEE NETCONF

Correct Answer: C

---

#### QUESTION 5

A client is moving to Model-Driven Telemetry and requires periodic updates. What must the network architect consider with this design?

- A. Updates that contain changes within the data are sent only when changes occur.
- B. Empty data subscriptions do not generate empty update notifications.
- C. Periodic updates include a full copy of the data that is subscribed to.
- D. The primary push update is sent immediately and cannot be delayed.

Correct Answer: C

Periodic updates contain a full copy of the subscribed data element or table for all supported transport protocols

[https://www.cisco.com/c/en/us/td/docs/ios-xml/ios/prog/configuration/166/b\\_166\\_programmability\\_cg/model\\_driven\\_telemetry.html](https://www.cisco.com/c/en/us/td/docs/ios-xml/ios/prog/configuration/166/b_166_programmability_cg/model_driven_telemetry.html)

[300-420 VCE Dumps](#)

[300-420 Study Guide](#)

[300-420 Braindumps](#)