



# 300-420<sup>Q&As</sup>

Designing Cisco Enterprise Networks (ENSLD)

## Pass Cisco 300-420 Exam with 100% Guarantee

Free Download Real Questions & Answers **PDF** and **VCE** file from:

<https://www.geekcert.com/300-420.html>

100% Passing Guarantee  
100% Money Back Assurance

Following Questions and Answers are all new published by Cisco  
Official Exam Center

- ⚙️ **Instant Download** After Purchase
- ⚙️ **100% Money Back** Guarantee
- ⚙️ **365 Days** Free Update
- ⚙️ **800,000+** Satisfied Customers



**QUESTION 1**

A company needs to increase access port capacity on one floor of a building. They want to leverage the existing catalyst access switch. There is no problem with uplink bandwidth capacity. However, no additional uplinks can be added because no ports are available on the distribution switches. Which solution must the company choose to provide additional access ports?

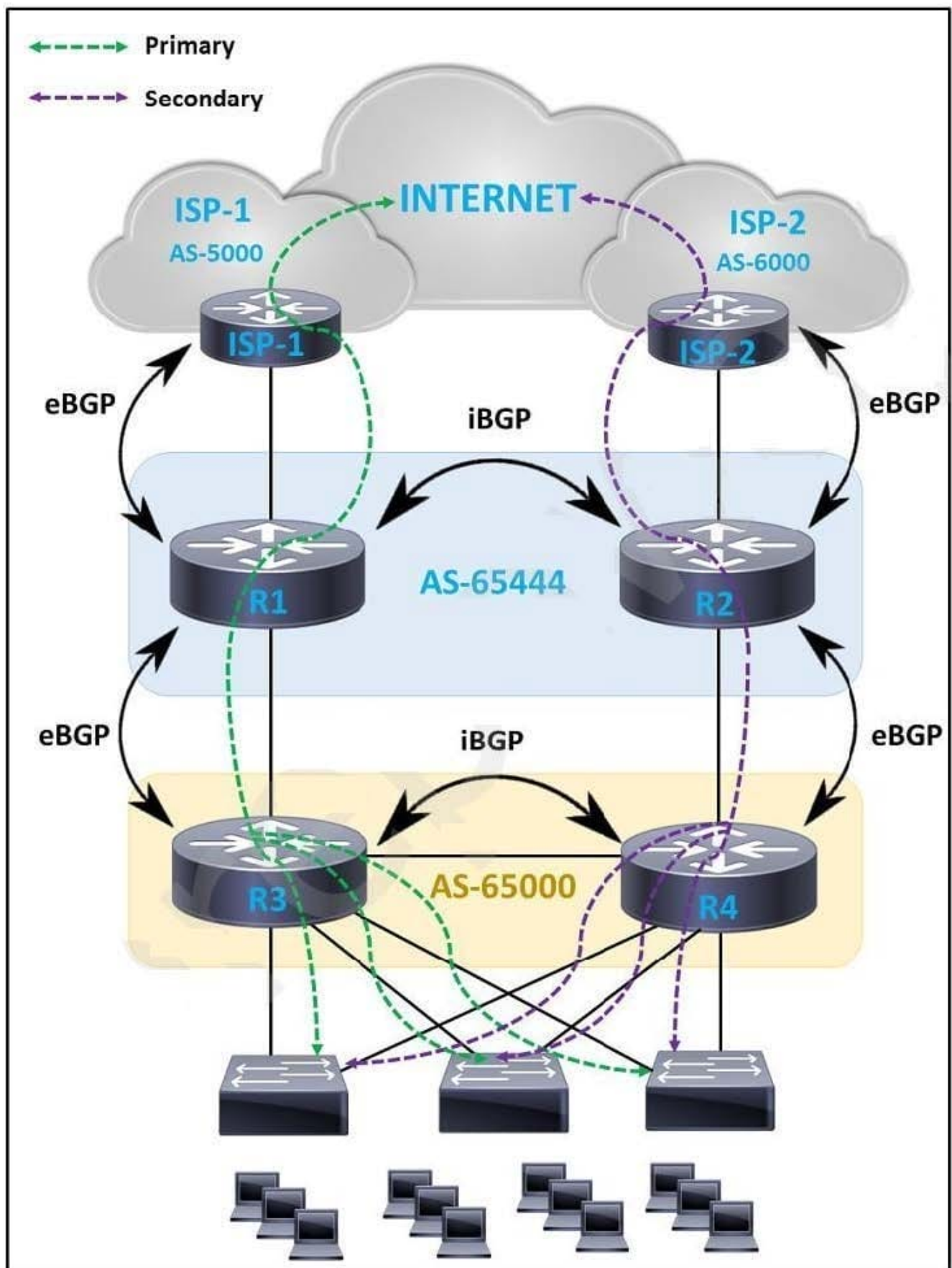
- A. VDC
- B. VSS
- C. Etherchannel
- D. Stackwise

Correct Answer: D

---

**QUESTION 2**

Refer to the exhibit. Where must an architect plan for route summarization for the topology?





- A. from the core toward the aggregation and the access toward the aggregation
- B. from the core toward the aggregation and the aggregation toward the core
- C. from the aggregation toward the access and the access toward the aggregation
- D. from the aggregation toward the core and the aggregation toward the access

Correct Answer: D

---

### QUESTION 3

Prior to establishing full-mesh iPsec tunnels in a typical Cisco SD-WAN deployment, which mechanism do WAN Edge routers use to exchange Key information for data plane encryption?

- A. They use vSmart controllers as key exchange servers.
- B. They use vManage as a key exchange server.
- C. They use IKEv2 when exchanging keys with each other.
- D. They use vBond as a key exchange server.

Correct Answer: A

---

### QUESTION 4

An ISP provides Layer 3 VPN service over MPLS to a customer with four branches and multiple CE routers at each branch. To exchange the routes that are learned from the CE routers, which BGP address family should the ISP activate among the PE routers?

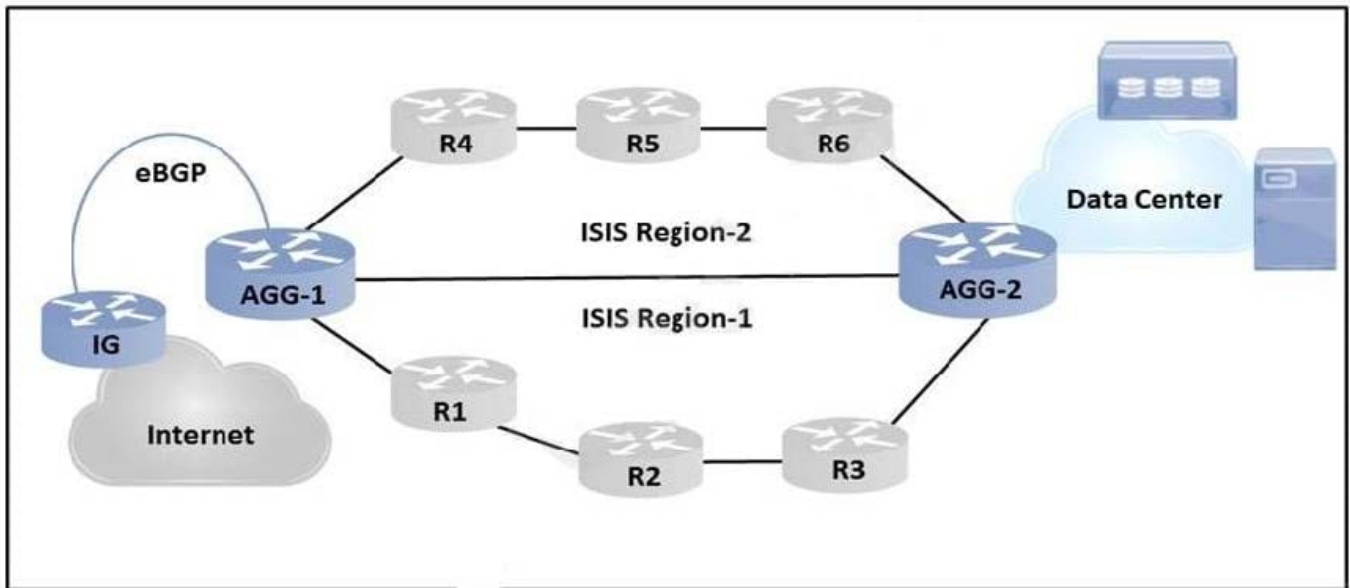
- A. address-family multicast
- B. L2VPN EVPN
- C. VPNv4 unicast
- D. IPv4 unicast

Correct Answer: C

---

### QUESTION 5

Refer to the exhibit.



An engineer is designing a routing solution for a customer. The design must ensure that a failure of network 10.1.0.0/24, 10.1.2.0/24, 10.2.1.0/24, or 10.2.3.0/24 does not impact the core. It also requires fast convergence time during any link failover in the core or access networks.

Which solution must the engineer select?

- A. Add aggregation layer between core and access networks.
- B. Enable graceful restart on routers A and C.
- C. Enable FRR for the connected networks of routers A and C.
- D. Enable summarization on routers A and C.

Correct Answer: C

[300-420 VCE Dumps](#)

[300-420 Practice Test](#)

[300-420 Exam Questions](#)