



300-510^{Q&As}

Implementing Cisco Service Provider Advanced Routing Solutions
(SPRI)

Pass Cisco 300-510 Exam with 100% Guarantee

Free Download Real Questions & Answers **PDF** and **VCE** file from:

<https://www.geekcert.com/300-510.html>

100% Passing Guarantee
100% Money Back Assurance

Following Questions and Answers are all new published by Cisco
Official Exam Center

- ⚙️ **Instant Download** After Purchase
- ⚙️ **100% Money Back** Guarantee
- ⚙️ **365 Days** Free Update
- ⚙️ **800,000+** Satisfied Customers





QUESTION 1

Refer to the exhibit.

Router 1:

```
interface TenGigE0/1
  point-to-point
  address-family ipv4 unicast
    fast-reroute per-prefix
  Fast-reroute per-prefix ti-lfa
```

```
R1#show isis fast-reroute 172.16.200.9/32
```

```
L2 172.16.200.9/32 [30/115]
    via 192.168.20.1, TenGigE0/1, R2, SRGB Base: 16000, Weight: 0
    FRR backup via 192.168.30.1, TenGigE0/2, R3, SRGB Base: 16000,
    Weight: 0, Metric 40
```

Router 1 is connected to router 2 on interface TenGigE0/1.

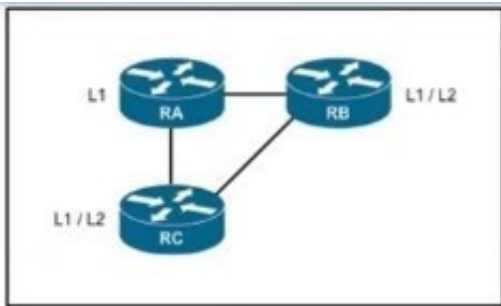
Which interface provides the alternate path to 172.16.200.9/32 when the link between router 1 and router 2 goes down?

- A. TenGigE0/1 interface provides the alternate path
- B. A backup path must be statically installed
- C. TenGigE0/2 interface provides the alternate path
- D. A primary path must be manually installed

Correct Answer: C

QUESTION 2

Refer to the exhibit.



Routers RA and RB are IS-IS peers configured for NSF but router RC is an IS-IS peer without NSF capability. If RA undergoes processor switchover, what is the effect on the network environment?

- A. If RC is operating without the Cisco configuration option, all three routers tear down their peering relationships and re-establish peering.
- B. All peer relationships remain up and the link-state database is unchanged.
- C. All peer relationships remain up, but the link-state database is rebuilt on each device.
- D. If RC is operating without the Cisco configuration option, only 2 routers tear down their peering relationships and re-establish peering.

Correct Answer: C

QUESTION 3

Refer to the exhibit.

```
Cisco(config)# extcommunity-set opaque overlay-color
Cisco(config-ext)# 1 co-flag 01
Cisco(config-ext)# end-set
Cisco(config)#
Cisco(config)# route-policy color
Cisco(config-rpl)# if destination in (10.10.10.1/32) then
Cisco(config-rpl-if)# set extcommunity color overlay-color
Cisco(config-rpl-if)# endif
Cisco(config-rpl)# pass
Cisco(config-rpl)# end-policy
```

An engineer is troubleshooting an issue with traffic steering using the color-only automated steering mechanism. BGP is failing to automatically steer traffic into an SR policy with the given color of a route, regardless of the next hop.

The layer 2 configuration is correct, and the physical connection between the devices is working normally.

Which additional command sequence must the engineer add to correct the issue?

- A. Cisco(config)# segment-routingCisco(config-sr)# traffic-engCisco(config-sr-te)# policy P1Cisco(config-sr-te-policy)# color 1 end-point ipv4 0.0.0.0



B. Cisco(config)# segment-routing traffic-engCisco(config-sr-te)# policy P1Cisco(config-sr-te-policy)# color 1 end-point ipv4 1.1.1.1Cisco(config-sr-te-policy)# autoroute Cisco(config-sr-te-policy-autoroute)# include all

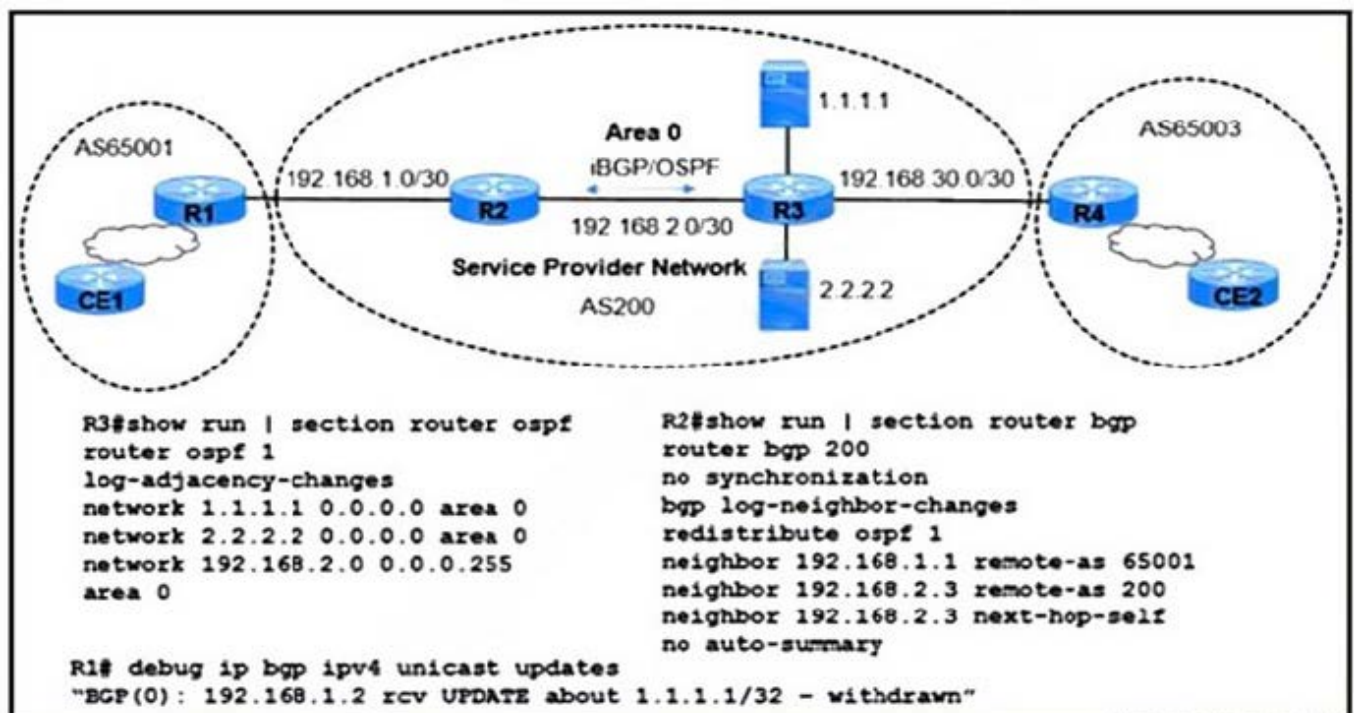
C. Cisco(config)# segment-routingCisco(config-sr)# traffic-engCisco(config-sr-te)# policy P1Cisco(config-sr-te-policy)# color 1 end ipv4 1.1.1.1Cisco(config-sr-te-policy)# autoroute include all

D. Cisco# configureCisco(config)# segment-routingCisco(config-sr)# traffic-engCisco(config-sr-te)# policy P1Cisco(config-sr-te-policy)# color 1 end-point

Correct Answer: A

QUESTION 4

Refer to the exhibit.



Users connected to an application on 1.1.1.1 via routers CE1 and CE2 are complaining of frequent disconnections. While troubleshooting the issue, a network engineer with an employee ID: 1234:56:789 determined that the application itself is working normally, but the link connected to the 1.1.1.1 application is flapping. The users on CE1 and CE2 are accessing applications on 2.2.2.2 without difficulty. Which action resolves the issue?

- A. Enable passive interface on the router R3 Loopback1 interface.
- B. Disable split horizon on router R2.
- C. Enable route dampening on routers R1 and R2.
- D. Redistribute CE1 routes on router R2.

Correct Answer: C



QUESTION 5

Which expression, when used with the as-path-set command, matches the AS path attribute of the route?

- A. neighbor-is
- B. dfa-regex
- C. ios-regex
- D. Length

Correct Answer: C

[300-510 Practice Test](#)

[300-510 Study Guide](#)

[300-510 Braindumps](#)