



300-515^{Q&As}

Implementing Cisco Service Provider VPN Services (SVPI)

Pass Cisco 300-515 Exam with 100% Guarantee

Free Download Real Questions & Answers **PDF** and **VCE** file from:

<https://www.geekcert.com/300-515.html>

100% Passing Guarantee
100% Money Back Assurance

Following Questions and Answers are all new published by Cisco
Official Exam Center

- ⚙️ **Instant Download** After Purchase
- ⚙️ **100% Money Back** Guarantee
- ⚙️ **365 Days** Free Update
- ⚙️ **800,000+** Satisfied Customers





QUESTION 1

What do routers on the network use to avoid routing loops when OSPF is running as the PE-CE routing protocol on a service provider network?

- A. the AS-Override feature
- B. the DN bit with type 3, 5, or 7 LSA
- C. the domain tag for type 2 LSA
- D. sham links to create a super backbone over the service provider network

Correct Answer: B

QUESTION 2

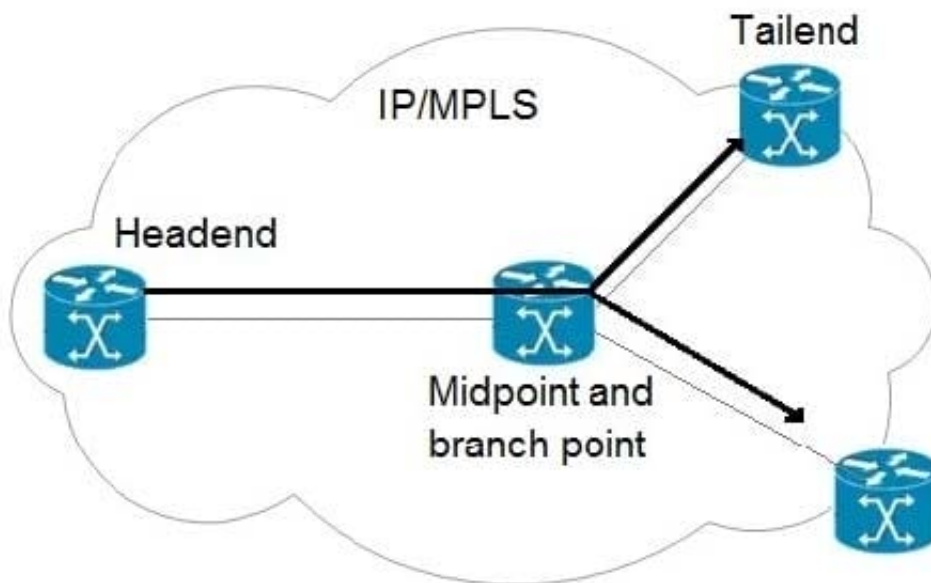
An engineer needs to improve MPLS network management by implementing a set of tools to support the NOC engineers in troubleshooting network failures. Which feature should the engineer implement to check the connectivity of the MPLS LSP between the ingress and egress PE routers?

- A. MPLS OAM
- B. MPLS-TP
- C. LDP autodiscovery
- D. extended ping

Correct Answer: A

Reference: https://www.cisco.com/c/en/us/td/docs/routers/asr9000/software/asr9k_r5-3/mpls/configuration/guide/b-mpls-cg53x-asr9k/b-mpls-cg53x-asr9k_chapter_01000.html

QUESTION 3



Refer to the exhibit. An engineer is implementing an MPLS P2MP TE solution. Which type of router can serve as the midpoint router and the tailend router in this P2MP TE network implementation?

- A. headend
- B. source
- C. transit
- D. bud

Correct Answer: D

Reference: https://www.cisco.com/c/en/us/td/docs/routers/asr920/configuration/guide/mppls/mp-te-path-setup-xe-3s-asr920-book/mp-te-path-setup-xe-3s-asr920-book_chapter_01.html

QUESTION 4

The network engineering group of a large ISP needs to harden the management plane of its Cisco 9000 Series ASRs. While addressing IPv6 ICMP issues, they realized they have to limit the rate at which IPv6 ICMP error messages are sent out on the network. Which command do they need to apply?

- A. icmp ipv6 rate-limit unreachable 1000
- B. ipv6 rate-limit 1000
- C. icmp ipv4 rate-limit unreachable 1000
- D. ipv6 icmp error-interval 50 20

Correct Answer: D

Reference: https://www.cisco.com/c/en/us/td/docs/ios-xml/ios/ipv6_basic/configuration/xs-3s/ip6b-xe-3s-book/ip6-icmp-rate-lmt-xe.html



QUESTION 5

Which statement describes the no bgp default route-target filter command?

- A. Prefixes that are received with route targets and distinguisher are accepted.
- B. Prefixes that are received with route targets and distinguisher are not accepted.
- C. Prefixes that are received with route targets that are not imported at the PE are not accepted.
- D. Prefixes that are received with route targets that are not imported at the PE are accepted.

Correct Answer: D

[Latest 300-515 Dumps](#)

[300-515 PDF Dumps](#)

[300-515 Practice Test](#)