



# 300-610<sup>Q&As</sup>

Designing Cisco Data Center Infrastructure (DCID)

## Pass Cisco 300-610 Exam with 100% Guarantee

Free Download Real Questions & Answers **PDF** and **VCE** file from:

<https://www.geekcert.com/300-610.html>

100% Passing Guarantee  
100% Money Back Assurance

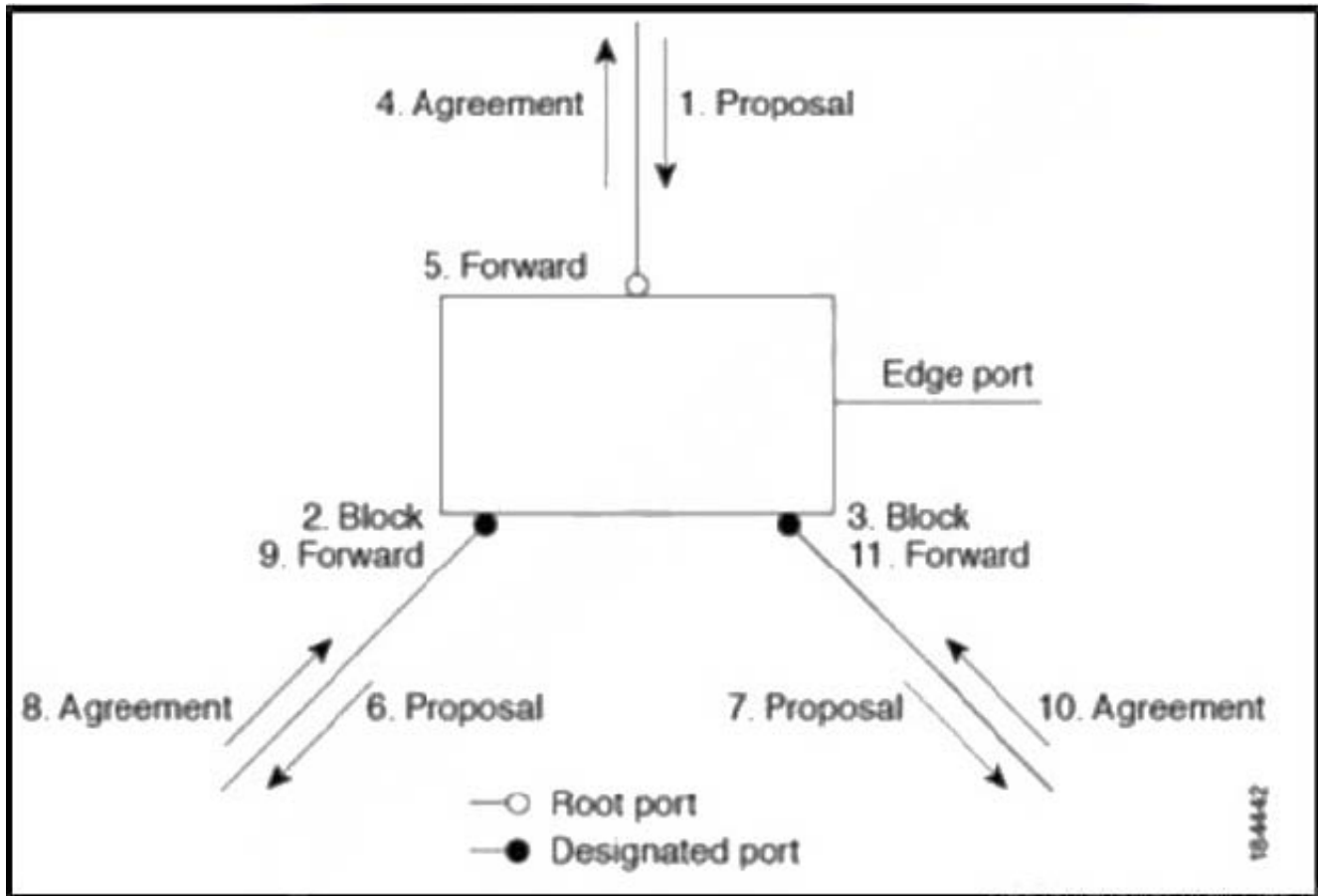
Following Questions and Answers are all new published by Cisco  
Official Exam Center

-  **Instant Download** After Purchase
-  **100% Money Back** Guarantee
-  **365 Days** Free Update
-  **800,000+** Satisfied Customers



**QUESTION 1**

Refer to the exhibit.



During a synchronization of port roles, a device receives a proposal message on one of its ports that is selected as the new root port. The logs show that Rapid PVST+ forced all other ports to synchronize with the new root information. The engineer analyzes the port states and concludes that the device is synchronized with superior root information received on the root port, and all other ports are synchronized. What happens to a designated port that is in the forwarding state and is not configured as an edge port, if Rapid PVST+ forces it to synchronize with new root information?

- A. It transitions to the blocking state.
- B. It discards frames switched from another port.
- C. It does not receive BPDUs for transmission.
- D. It immediately replies with its own information.

Correct Answer: A

**QUESTION 2**



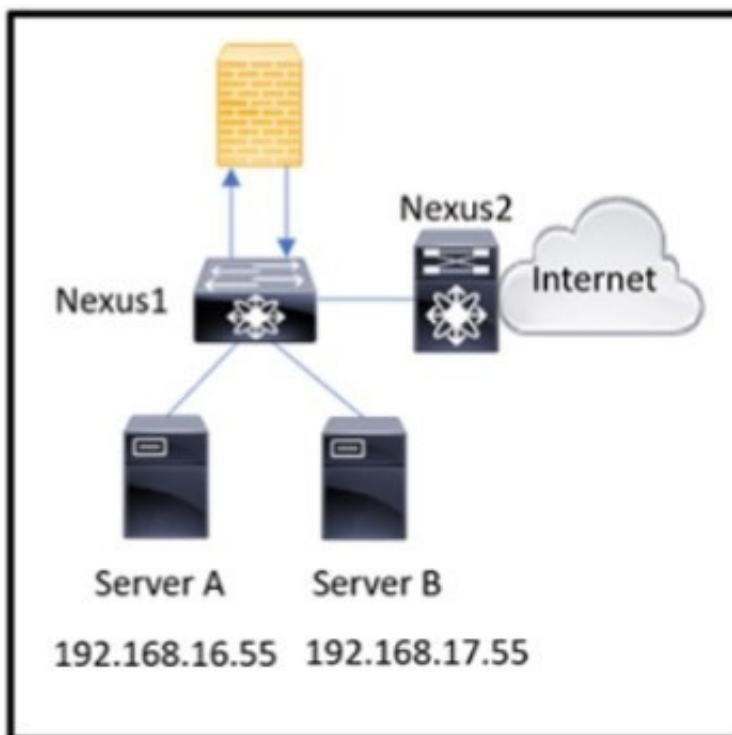
An engineer is expanding an existing iSCSI environment and must choose an addressing scheme. When checking one of the devices, the engineer discovers this target device naming used {prefix}. 2019-01.com.acme.123:00.ftd0cb21.bcb389458389 Which addressing scheme was used in the environment?

- A. Extended Unique identifier
- B. Fibre Channel ID
- C. iSCSI Qualified Name
- D. Network Address Authority

Correct Answer: A

### QUESTION 3

Refer to the exhibit.



The Cisco Nexus Series Switch with hostname Nexus1 is the default gateway for server A and server B. Both servers must have reachability to the internet, however, server A internet traffic must pass through the firewall for deep packet inspection. Also, the firewall must inspect any communication between server A and server B.

Which solution must be applied to separate the data plane path for server A and server B?

- A. VLAN
- B. VRF



C. VDC

D. VXLAN

Correct Answer: B

---

#### QUESTION 4

A Cisco engineer is configuring MPLS VPN BGP at a customer site that is connected to the provider site by more than one path MPLS VPN BGP Local Convergence link protection is enabled. After the engineer installs the main forwarding path and the redundant backup path within the BGP, they assign a unique route distinguisher to each VRF table on all PE devices that serve as a backup to the link.

What is a prerequisite for this local convergence to work?

- A. Inter autonomous system option A (back-to-back VRF) is active.
- B. BGP must support lossless switchover between operational paths
- C. IP/GRE is enabled.
- D. The system is performing a PE-CE link protection on both ends

Correct Answer: D

---

#### QUESTION 5

Which mode must be enabled on a Cisco UCS Fabric Interconnect to connect directly to a storage array?

- A. NPIV mode
- B. FC end-host mode
- C. NPV mode
- D. FC switching mode

Correct Answer: D

Reference: [https://www.cisco.com/c/en/us/td/docs/unified\\_computing/ucs/ucs-manager/GUI-User-Guides/Storage-Mgmt/3-1/b\\_UCSM\\_GUI\\_Storage\\_Management\\_Guide\\_3\\_1/b\\_UCSM\\_GUI\\_Storage\\_Management\\_Guide\\_3\\_1\\_chapter\\_01110.html](https://www.cisco.com/c/en/us/td/docs/unified_computing/ucs/ucs-manager/GUI-User-Guides/Storage-Mgmt/3-1/b_UCSM_GUI_Storage_Management_Guide_3_1/b_UCSM_GUI_Storage_Management_Guide_3_1_chapter_01110.html)

[300-610 PDF Dumps](#)

[300-610 VCE Dumps](#)

[300-610 Practice Test](#)