



# 300-615<sup>Q&As</sup>

Troubleshooting Cisco Data Center Infrastructure (DCIT)

## Pass Cisco 300-615 Exam with 100% Guarantee

Free Download Real Questions & Answers **PDF** and **VCE** file from:

<https://www.geekcert.com/300-615.html>

100% Passing Guarantee  
100% Money Back Assurance

Following Questions and Answers are all new published by Cisco  
Official Exam Center

- ⚙️ **Instant Download** After Purchase
- ⚙️ **100% Money Back** Guarantee
- ⚙️ **365 Days** Free Update
- ⚙️ **800,000+** Satisfied Customers





### QUESTION 1

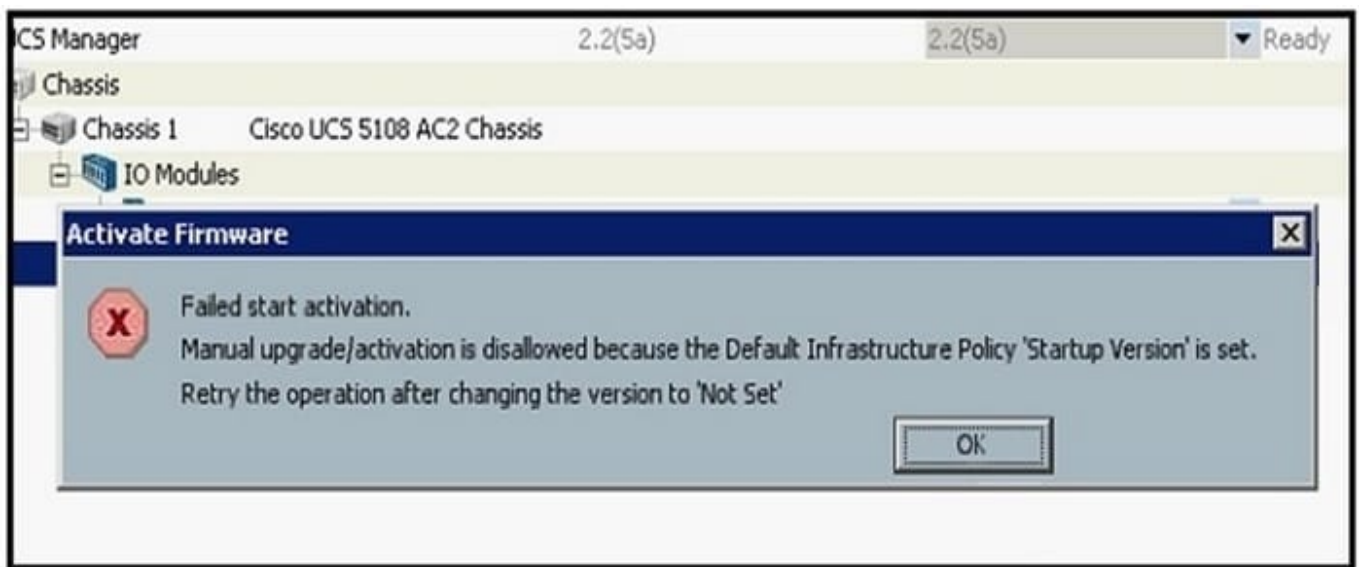
A server fails to boot from the operating system after a RAID1 cluster migration. The RAID remains in an inactive state during and after a service profile association. Which action resolves the issue?

- A. Configure the SAN boot target in the service profile.
- B. Configure the SAN boot target to any configuration mode.
- C. Use a predefined local disk configuration policy.
- D. Remove the local disk configuration policy.

Correct Answer: C

### QUESTION 2

Refer to the exhibit.



Cisco UCS Manager is being upgraded using the Auto Install feature, but the FSM fails. Which action resolves the issue?

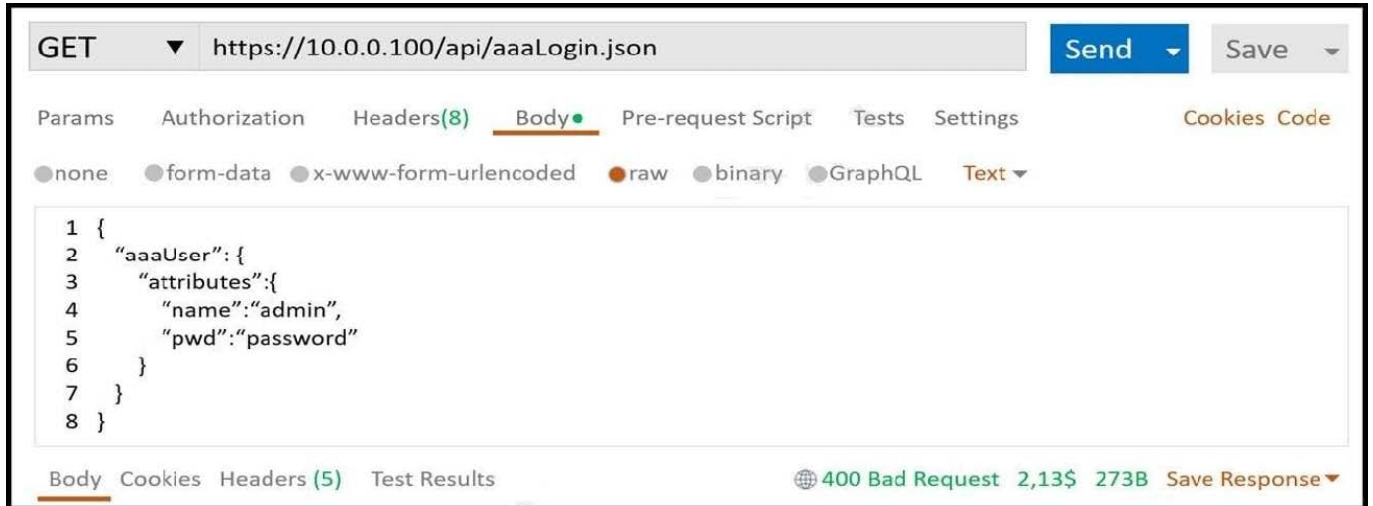
- A. Acknowledge the primary fabric interconnect.
- B. Remove the service pack from the subordinate fabric interconnect.
- C. Clear the startup version of the default infrastructure pack.
- D. Upgrade the firmware of the infrastructure firmware by using the force option.

Correct Answer: C



### QUESTION 3

Refer to the exhibit.



A Postman call to a Cisco APIC fails. The access credentials were confirmed to be configured as expected. Which action resolves the issue?

- A. Change operation type to POST
- B. Modify the protocol to HTTP
- C. Change the IP address to a domain name
- D. Modify the target protocol type to XML

Correct Answer: A

### QUESTION 4

Refer to the exhibit.



```
FI-A(nxos)# show int vfc 952
vfc952 is down (Error Disabled - VLAN L2 down on Eth interface)
Bound interface is Vethernet9155
Port description is server 1/5, VHBA fc0
Hardware is Ethernet
Port WWN is 23:c2:00:de:fb:2b:e6:ff
Admin port mode is F, trunk mode is on
snmp link state traps are enabled
Port vsan is 100
1 minute input rate 0 bits/sec, 0 bytes/sec, 0 frames/sec
1 minute output rate 0 bits/sec, 0 bytes/sec, 0 frames/sec
0 frames input, 0 bytes
0 discards, 0 errors
0 frames output, 0 bytes
0 discards, 0 errors
```

A network engineer is implementing a Cisco UCS environment. The environment consists of eight servers configured with the same service profile template and Windows 2012 installed. The VFC interfaces of five of these servers are showing the error shown in the exhibit. Which action resolves the issue?

- A. Modify the vHBAs name in the storage connectivity policy
- B. Configure upstream zoning
- C. Decommission and recommission the servers
- D. Modify the boot order in the boot policy

Correct Answer: A

## QUESTION 5

Refer to the exhibit.



```
18 SNMP packets input
  0 Bad SNMP versions
  18 Unknown community name
  0 Illegal operation for community name supplied
  0 Encoding errors
  0 Number of requested variables
  0 Number of altered variables
  0 Get-request PDUs
  0 Get-next PDUs
  0 Set-request PDUs
  0 No such name PDU
  0 Bad value PDU
  0 Read Only PDU
  0 General errors
  0 Get Responses
  0 Unknown Context name
0 SNMP packets output
  0 Trap PDU
  0 Too big errors (Maximum packet size 1500)
  0 No such name errors
  0 Bad values errors
  0 General errors
  0 Get Requests
  0 Get Next Requests
  0 Set Requests
  0 Get Responses
  0 Silent drops
```

Community	Group / Access	context	acl_filter
public	network-operator		

---

#### SNMP USERS

---

User	Auth	Priv(enforce)	Groups	acl_filter
admin	md5	des(no)	network-admin	

The monitoring team reports an inability to access the devices after a new centralized management integration. Which action resolves the issue?

- A. Enable SHA authentication for the admin user
- B. Update the community string



C. Modify the SNMP ACL to allow the incoming request packets

D. Change the admin user permissions to write

Correct Answer: B

[300-615 VCE Dumps](#)

[300-615 Practice Test](#)

[300-615 Braindumps](#)