



# 300-620<sup>Q&As</sup>

Implementing Cisco Application Centric Infrastructure (DCACI)

## Pass Cisco 300-620 Exam with 100% Guarantee

Free Download Real Questions & Answers **PDF** and **VCE** file from:

<https://www.geekcert.com/300-620.html>

100% Passing Guarantee  
100% Money Back Assurance

Following Questions and Answers are all new published by Cisco  
Official Exam Center

- ⚙️ **Instant Download** After Purchase
- ⚙️ **100% Money Back** Guarantee
- ⚙️ **365 Days** Free Update
- ⚙️ **800,000+** Satisfied Customers





### QUESTION 1

Which class of ACI object is presented in this output?

- A. Contract
- B. Bridge Domain
- C. Tenant
- D. Endpoint

Correct Answer: A

<https://www.cisco.com/c/en/us/td/docs/switches/datacenter/aci/apic/sw/4-x/openstack/ACI-Installation-Guide-for-Red-Hat-Using-OSP13-Director/m-configuringironic-for-openstack.html>

---

### QUESTION 2

A Cisco ACI fabric must send a packet between two pods in a Cisco ACI Multi-Pod topology where ARP flooding is disabled within the bridge domain. How does a Cisco ACI spine switch forward ARP messages from a leaf switch in POD1 to POD2?

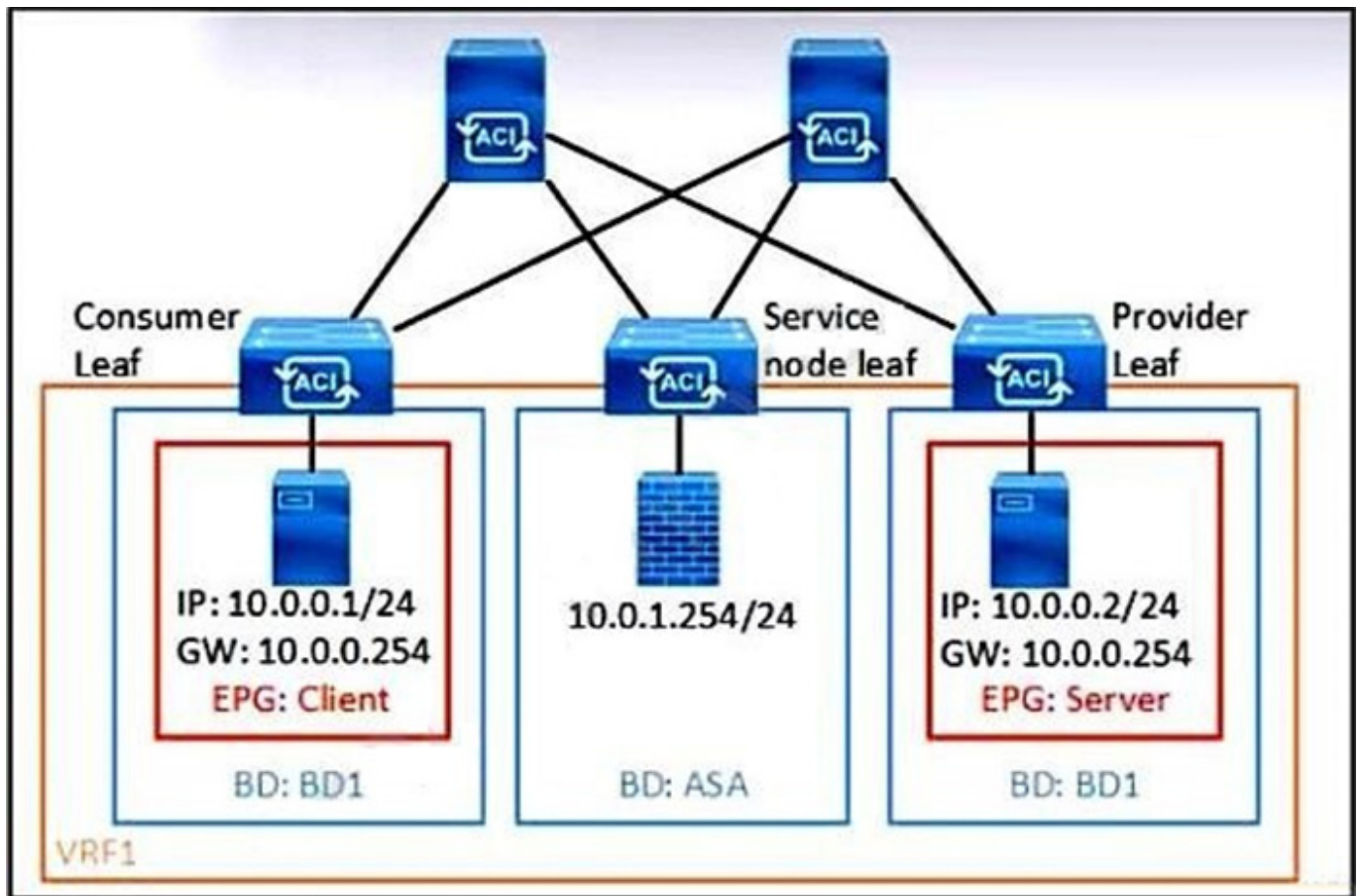
- A. ARP optimization is applied and sends ARP to remote anycast.
- B. The ARP message is dropped and connectivity is lost between the endpoints.
- C. A proxy ARP message is sent to destination group 225.224.0.0.
- D. An ARP Glean message is sent to multicast address 239.255.255.240.

Correct Answer: D

---

### QUESTION 3

Refer to the exhibit.



What must be configured in the service graph to redirect HTTP traffic between the EPG client and EPG server to go through the Cisco ASA firewall?

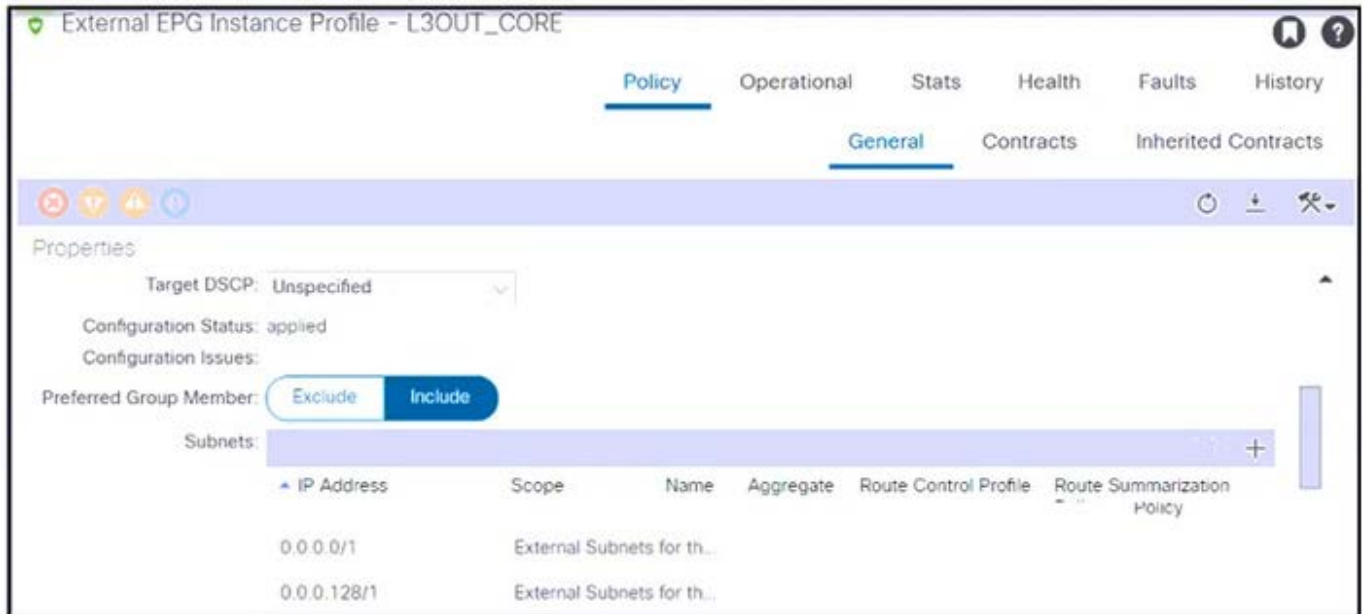
- A. precise filter to allow only HTTP traffic
- B. permit-all contract filter
- C. contract with no filter
- D. contract filter to allow ARP and HTTP.

Correct Answer: A

ARP and other bcast and mcast traffic should never be redirected to PBR device.

#### QUESTION 4

Refer to the exhibit.



An engineer configured subnets on the external EPG called L3OUT\_CORE. The external endpoints in the 10.1.0.0/24 subnet can reach internal endpoints, but the external endpoints in the 172.16.1.0/24 subnet are unreachable. Which set of actions enables the connectivity?

- A. Delete both external EPG subnets. Create the 0.0.0.0/1 subnet.
- B. Delete the external EPG subnet 0.0.0.128/1. Create the 128.0.0.0/1 subnet.
- C. Delete both external EPG subnets. Create the 0.0.0.0/0 subnet.
- D. Delete the external EPG subnet 0.0.0.0/0. Create the 0.0.0.0/128 subnet.

Correct Answer: B

The 0.0.0.0/0 matches every IP address, whereas 0.0.0.0/1 only matches half of them (0.0.0.0-127.255.255.255) and requires 128.0.0.0/1 as its pair to match the rest (128.0.0.0-255.255.255.255).

<https://serverfault.com/questions/1100250/what-is-the-difference-between-0-0-0-0-0-and-0-0-0-0-1>

## QUESTION 5

A Cisco ACI is integrated with a VMware vSphere environment. The port groups must be created automatically in vSphere and propagated to hypervisors when created in the ACI environment. Which action accomplishes this goal?

- A. Create the port groups on the vCenter that reflect the EPG names in the APIC
- B. Assign the uplinks of the ESXi hosts to the vDS that the APIC created
- C. Configure contracts for the EPGs that are required on the ESXi hosts
- D. Associate the VMM domain with the EPGs that must be available in vCenter

Correct Answer: D



VCE & PDF

GeekCert.com

<https://www.geekcert.com/300-620.html>

2024 Latest geekcert 300-620 PDF and VCE dumps Download

---

[300-620 Practice Test](#)

[300-620 Exam Questions](#)

[300-620 Braindumps](#)