



300-630^{Q&As}

Implementing Cisco Application Centric Infrastructure - Advanced
(DCACIA)

Pass Cisco 300-630 Exam with 100% Guarantee

Free Download Real Questions & Answers **PDF** and **VCE** file from:

<https://www.geekcert.com/300-630.html>

100% Passing Guarantee
100% Money Back Assurance

Following Questions and Answers are all new published by Cisco
Official Exam Center

- ⚙️ **Instant Download** After Purchase
- ⚙️ **100% Money Back** Guarantee
- ⚙️ **365 Days** Free Update
- ⚙️ **800,000+** Satisfied Customers





QUESTION 1

An engineer configures a new Cisco ACI Multi-Site Orchestrator node to join an MSO cluster. Which two components are necessary to ensure that the new node has IP connectivity in this configuration? (Choose two.)

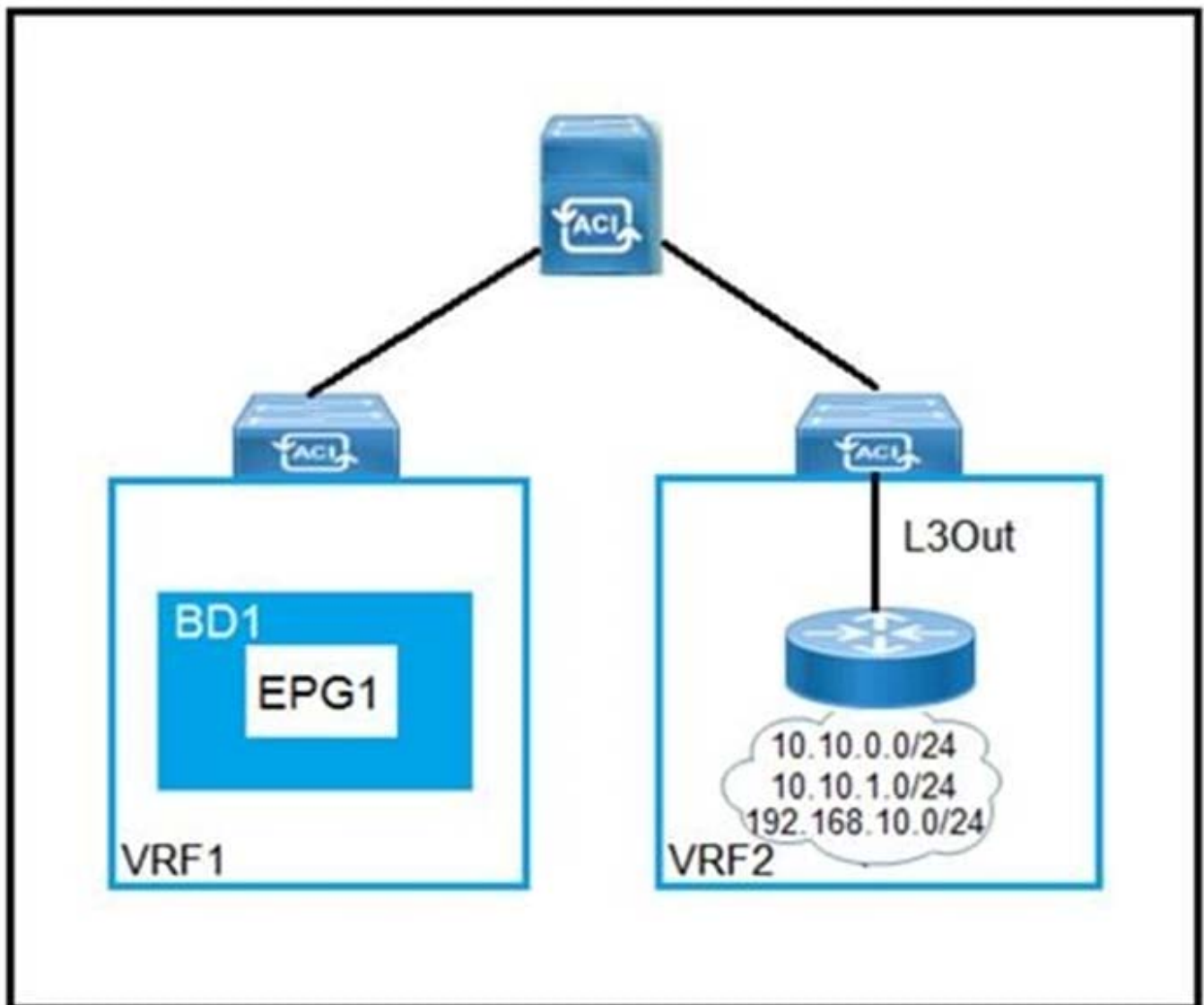
- A. Cisco ACI spine interfaces that are connected to ISN
- B. Cisco APICs over the OOB management network
- C. existing Cisco ACI Multi-Site Orchestrator node
- D. management IP of ESXi hosts where the controllers are deployed
- E. OOB interface of ISN

Correct Answer: BC

Reference: <https://www.cisco.com/c/en/us/solutions/collateral/data-center-virtualization/application-centric-infrastructure/white-paper-c11-739609.html>

QUESTION 2

DRAG DROP



Refer to the exhibit. Drag and drop the subnets and flags from the left into the External Network Instance Profile policies on the right to create a setup that advertises only 10.10.0.0/24 and 10.10.1.0/24 prefixes in VRF1 and establishes connectivity between VRFs. Not all options are used.

Select and Place:



Answer Area

10.10.0.0/16
10.10.0.0/23
0.0.0.0/0
External Subnets for the External EPG
Export Route Control Subnet
Shared Route Control Subnet
Import Route Control Subnet
Shared Security Import Subnet
Aggregate Export
Aggregate Import
Aggregate Shared

IP Address
IP Address
Scope
Scope 1
Scope 2
Scope 3
Aggregate
Aggregate

Correct Answer:



Answer Area

	IP Address
10.10.0.0/23	10.10.0.0/16
0.0.0.0/0	Scope
	Shared Route Control Subnet
Export Route Control Subnet	Shared Security Import Subnet
	External Subnets for the External EPG
Import Route Control Subnet	Aggregate
	Aggregate Shared
Aggregate Export	
Aggregate Import	

QUESTION 3

Which action must be taken to connect two nonsilent servers in active/standby mode to two ACI leaves?

- A. Implement a virtual PortChannel on ACI leaves
- B. Enable ARP flooding for the bridge domain if the MAC address of the active interface changes after NIC failover
- C. Configure ARP flooding for the bridge domain if the MAC address of the active interface stays identical after a NIC failover

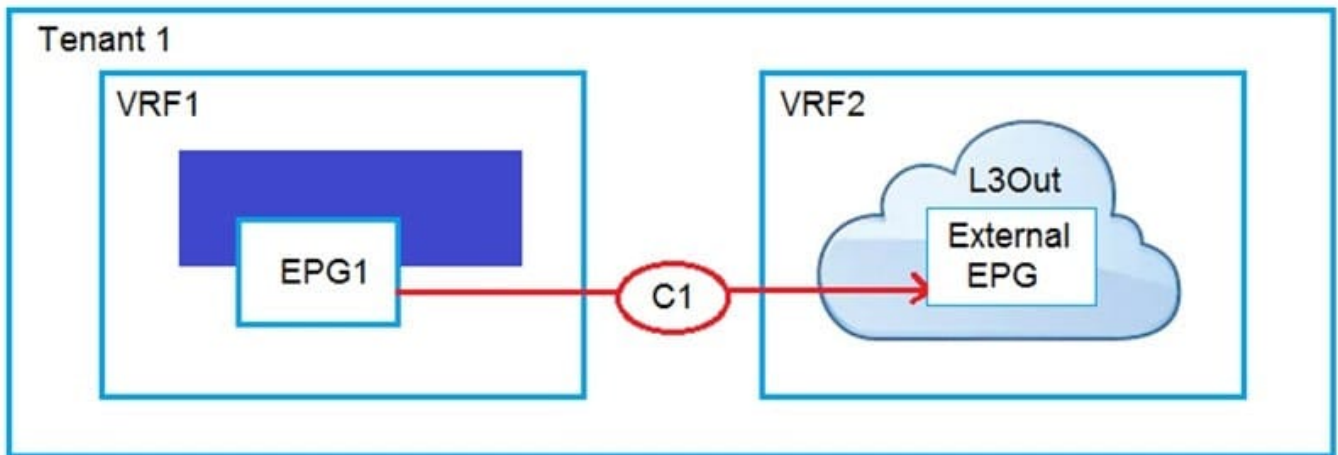


D. Disable dataplane learning to avoid endpoint flapping

Correct Answer: C

Reference: <https://www.cisco.com/c/en/us/td/docs/dcn/whitepapers/cisco-application-centric-infrastructure-design-guide.html>

QUESTION 4



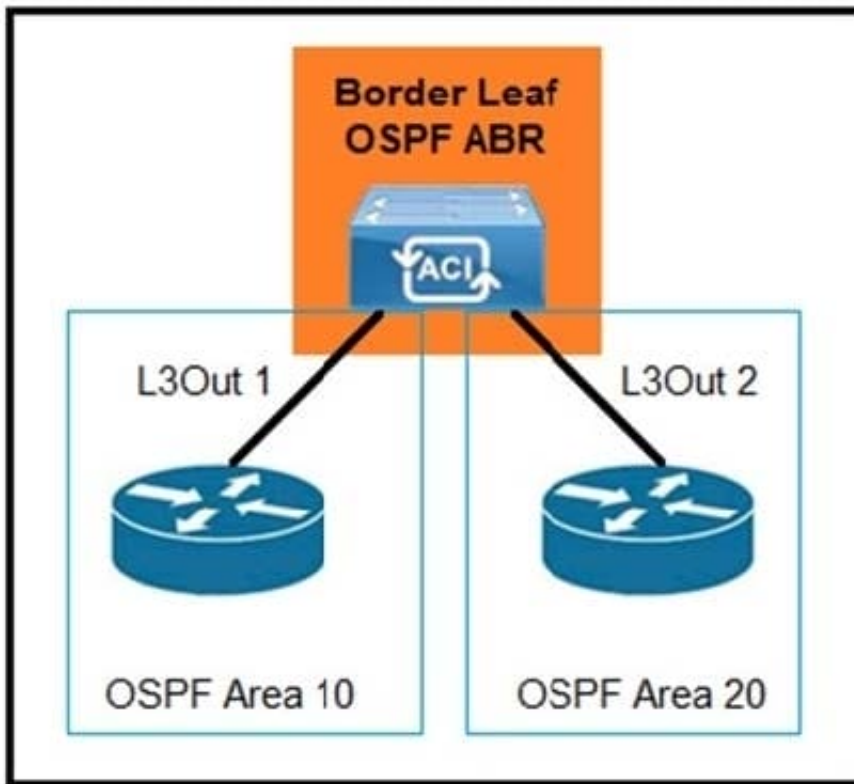
Refer to the exhibit. An engineer must have communication between EPG1 in VRF1 and External EPG in VRF2. Which three actions should be taken for the defined subnets in the L3Out External EPG to accomplish this goal? (Choose three.)

- A. Enable Shared Route Control Subnet
- B. Enable External Subnets for External EPG
- C. Enable Export Route Control Subnet
- D. Enable Shared Security Import Subnet
- E. Enable Aggregate Shared Routes
- F. Enable Import Route Control Subnet

Correct Answer: CDF

Reference: <https://www.cisco.com/c/en/us/solutions/collateral/data-center-virtualization/application-centric-infrastructure/guide-c07-743150.html>

QUESTION 5



Refer to the exhibit. Which configuration must be implemented to allow intra-VRF transit routing between the two external routers?

- A. Deploy both areas under the same L3Out policy
- B. Change one of the areas to area 0
- C. Configure OSPF virtual links
- D. Modify L3Out 1 to use the same OSPF area as L3Out 2

Correct Answer: A

[300-630 VCE Dumps](#)

[300-630 Practice Test](#)

[300-630 Braindumps](#)