



300-730^{Q&As}

Implementing Secure Solutions with Virtual Private Networks (SVPN)

Pass Cisco 300-730 Exam with 100% Guarantee

Free Download Real Questions & Answers **PDF** and **VCE** file from:

<https://www.geekcert.com/300-730.html>

100% Passing Guarantee
100% Money Back Assurance

Following Questions and Answers are all new published by Cisco
Official Exam Center

- ⚙️ **Instant Download** After Purchase
- ⚙️ **100% Money Back** Guarantee
- ⚙️ **365 Days** Free Update
- ⚙️ **800,000+** Satisfied Customers





QUESTION 1

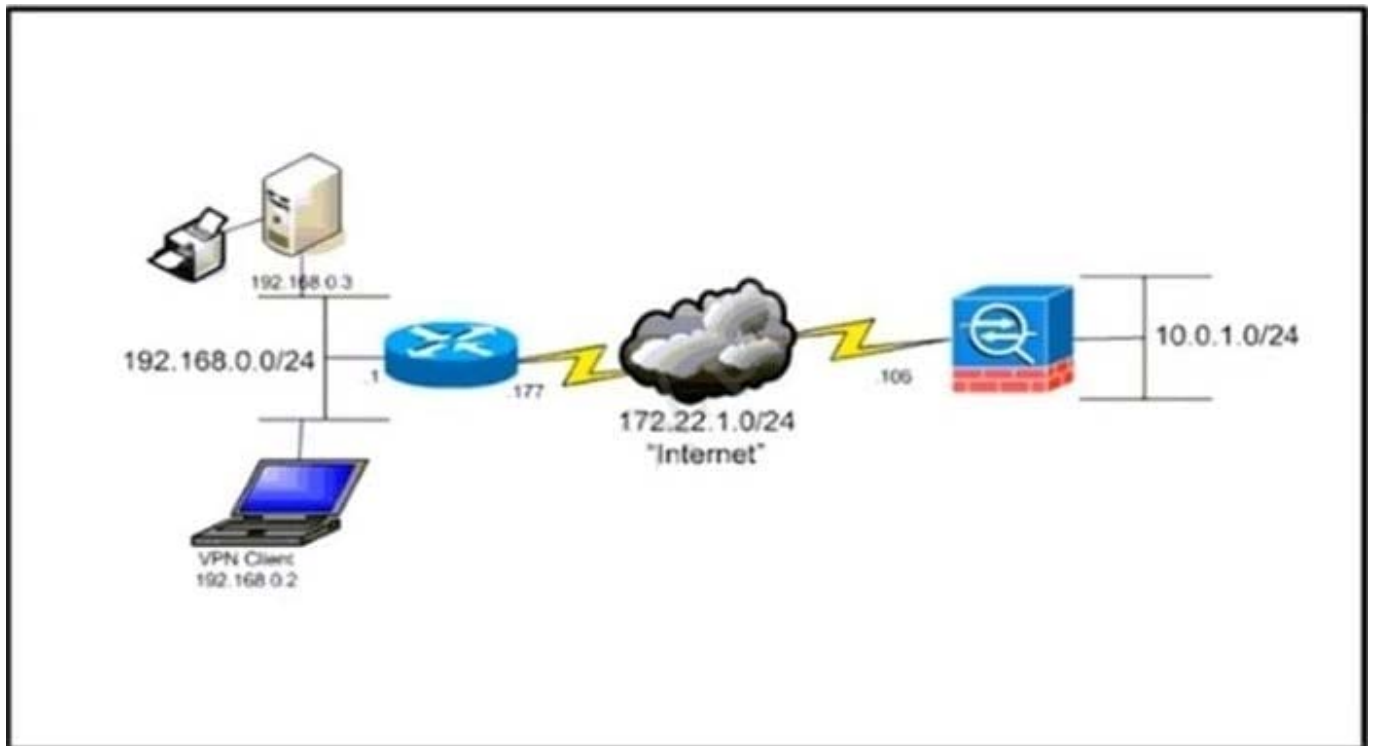
Which configuration construct must be used in a FlexVPN tunnel?

- A. EAP configuration
- B. multipoint GRE tunnel interface
- C. IKEv1 policy
- D. IKEv2 profile

Correct Answer: D

QUESTION 2

Refer to the exhibit.



The network administrator must allow the Cisco AnyConnect Secure Mobility Client to securely access the corporate resources via IKEv2 and print locally. Traffic that is destined for the Internet must still be tunneled to the Cisco ASA. Which configuration does the administrator use to accomplish this goal?

- A. Split exclude policy with a deny for 192.168.0.3/32.
- B. Split exclude policy with a permit for 0.0.0.0/32.
- C. Tunnel all policy.



D. Split include policy with a permit for 192.168.0.0/24.

Correct Answer: B

QUESTION 3

A Cisco ASA is configured in active/standby mode. What is needed to ensure that Cisco AnyConnect users can connect after a failover event?

- A. AnyConnect images must be uploaded to both failover ASA devices.
- B. The vpnsession-db must be cleared manually.
- C. Configure a backup server in the XML profile.
- D. AnyConnect client must point to the standby IP address.

Correct Answer: A

Reference: https://www.cisco.com/c/en/us/td/docs/security/asa/asa90/configuration/guide/asa_90_cli_config/ha_active_standby.html

QUESTION 4

Which VPN solution uses TBAR?

- A. GETVPN
- B. VTI
- C. DMVPN
- D. Cisco AnyConnect

Correct Answer: A

Reference: https://www.cisco.com/c/en/us/td/docs/ios-xml/ios/sec_conn_getvpn/configuration/xs/sec-get-vpn-xe-3s-book/sec-get-vpn.html

QUESTION 5

Refer to the exhibit.



```
webvpn
port 9443
enable outside
dtls port 9443
anyconnect-essentials
anyconnect image disk0:/anyconnect-win-4.9.03049-webdeploy-k9.pkg 3
anyconnect profiles vpn_profile_1 disk0:/vpn_profile_1.xml
anyconnect enable
tunnel-group-list enable
cache
disable
error-recovery disable
group-policy Cisc012345678 internal
group-policy Cisc012345678 attributes
  dns-server value 192.168.1.3
  vpn-tunnel-protocol ssl-client
address-pools value vpn_pool
```

Which type of Cisco VPN is shown for group Cisc012345678?

- A. Cisco AnyConnect Client VPN
- B. DMVPN
- C. Clientless SSLVPN
- D. GETVPN

Correct Answer: A

It is stated client-vpn as the vpn-tunnel-protocol.

[300-730 PDF Dumps](#)

[300-730 Practice Test](#)

[300-730 Study Guide](#)