



300-820^{Q&As}

Implementing Cisco Collaboration Cloud and Edge Solutions (CLCEI)

Pass Cisco 300-820 Exam with 100% Guarantee

Free Download Real Questions & Answers **PDF** and **VCE** file from:

<https://www.geekcert.com/300-820.html>

100% Passing Guarantee
100% Money Back Assurance

Following Questions and Answers are all new published by Cisco
Official Exam Center

- ⚙️ **Instant Download** After Purchase
- ⚙️ **100% Money Back** Guarantee
- ⚙️ **365 Days** Free Update
- ⚙️ **800,000+** Satisfied Customers





QUESTION 1

Cisco Expressways are being deployed for Mobile and Remote Access. The Expressway-E internal interface (LAN1) IP is 192.168.100.10/24, and the external interface (LAN2) IP is 172.16.100.10/24. The Expressway-C IP is 192.168.20.10/24. The default gateway for each subnet is the first useable address. How must the Expressway-E be configured to allow proper routing to the internal and external networks?

- A. IPv4 gateway: 172.16.100.1, and a static route for the 192.168.100.0/24 subnet using LAN1
- B. IPv4 gateway: 192.168.100.1, and a static route for the 192.168.20.0/24 subnet using LAN1
- C. IPv4 gateway: 192.168.100.1, and a static route for the 172.16.100.0/24 subnet using LAN2
- D. IPv4 gateway: 172.16.100.1, and a static route for the 192.168.20.0/24 subnet using LAN1

Correct Answer: D

QUESTION 2

An organization with a domain name of example.com.

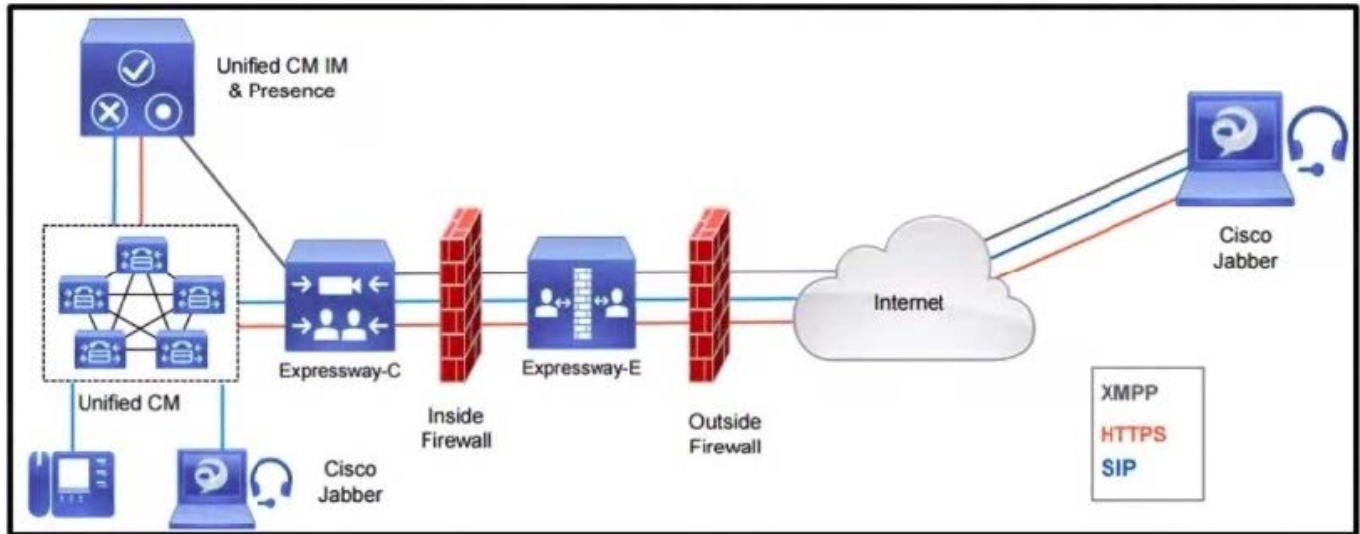
Which two SRV records are valid for a SIP and H.323 communication? (Choose two.)

- A. _sips._tcp.example.com
- B. _sips._udp.example.com
- C. _h323ls._udp.example.com
- D. _h323ls._tcp.example.com
- E. _collab-edge._tls.example.com

Correct Answer: AC

QUESTION 3

Refer to the exhibit.



Which inbound connection should an administrator configure on the outside firewall?

- A. Media: UDP 36000 to 36011
- B. HTTPS (tunneled over SSH between C and E): TCP 2222
- C. SIP TCP 5061
- D. XMPP TCP 5222

Correct Answer: D

Based on following LINK and page 18(SIP Calls) + 29 (MRA Connections): https://www.cisco.com/c/dam/en/us/td/docs/voice_ip_comm/expressway/config_guide/X12-5/Cisco-Expressway-IP-Port-Usage-for-Firewall-Traversal-Deployment-Guide-X12-5.pdf

SIP UDP: 5060 SIP TCP: 5060 SIP TLS: 5061 XMPP TCP: 5222 RTP/RTCP: 36000-59999

QUESTION 4

What is a requirement when configuring the Cisco Webex Hybrid Message account for accessing the API of the Cisco UCM IM and Presence Service?

- A. Add a new end-user with the "Standard AXL API Access" role
- B. Use an application user with only the "Standard CTI Allow Control of All Devices" role
- C. Use an application user not the main administrator account with the "Standard AXL API Access" role
- D. Use the main administrator account if it includes the "Standard AXL API Access" role

Correct Answer: C



QUESTION 5

Which entry in the public (external) DNS is valid to configure DNS SRV records for a Cisco Mobile and Remote Access solution?

- A. _cisco-uds._tcp.
- B. _cisco-mra._tls.
- C. _collab-edge._tls.
- D. _cisco-expwy._tls.

Correct Answer: C

[Latest 300-820 Dumps](#)

[300-820 Study Guide](#)

[300-820 Exam Questions](#)