



# 312-50V11<sup>Q&As</sup>

Certified Ethical Hacker v11 Exam

**Pass EC-COUNCIL 312-50V11 Exam with 100% Guarantee**

Free Download Real Questions & Answers **PDF** and **VCE** file from:

<https://www.geekcert.com/312-50v11.html>

100% Passing Guarantee  
100% Money Back Assurance

Following Questions and Answers are all new published by EC-COUNCIL Official Exam Center

-  **Instant Download** After Purchase
-  **100% Money Back** Guarantee
-  **365 Days** Free Update
-  **800,000+** Satisfied Customers





### QUESTION 1

An attacker identified that a user and an access point are both compatible with WPA2 and WPA3 encryption. The attacker installed a rogue access point with only WPA2 compatibility in the vicinity and forced the victim to go through the WPA2 four-way handshake to get connected. After the connection was established, the attacker used automated tools to crack WPA2-encrypted messages. What is the attack performed in the above scenario?

- A. Timing-based attack
- B. Side-channel attack
- C. Downgrade security attack
- D. Cache-based attack

Correct Answer: B

---

### QUESTION 2

Firewalls are the software or hardware systems that are able to control and monitor the traffic coming in and out the target network based on pre-defined set of rules. Which of the following types of firewalls can protect against SQL injection attacks?

- A. Data-driven firewall
- B. Packet firewall
- C. Web application firewall
- D. Stateful firewall

Correct Answer: C

---

### QUESTION 3

The network users are complaining because their system are slowing down. Further, every time they attempt to go a website, they receive a series of pop-ups with advertisements. What types of malware have the system been infected with?

- A. Virus
- B. Spyware
- C. Trojan
- D. Adware

Correct Answer: D

Adware, or advertising supported computer code, is computer code that displays unwanted advertisements on your pc. Adware programs can tend to serve you pop-up ads, will modification your browser's homepage, add spyware and



simply bombard your device with advertisements. Adware may be a additional summary name for doubtless unwanted programs. It's roughly a virulent disease and it's going to not be as clearly malicious as a great deal of different problematic code floating around on the net. create no mistake concerning it, though, that adware has to return off of no matter machine it's on. Not solely will adware be extremely annoying whenever you utilize your machine, it might additionally cause semipermanent problems for your device. Adware a network users the browser to gather your internet browsing history so as to 'target' advertisements that appear tailored to your interests. At their most innocuous, adware infections square measure simply annoying. as an example, adware barrages you with pop-up ads that may create your net expertise markedly slower and additional labor intensive.

#### QUESTION 4

What is the proper response for a NULL scan if the port is open?

- A. SYN
- B. ACK
- C. FIN
- D. PSH
- E. RST
- F. No response

Correct Answer: F

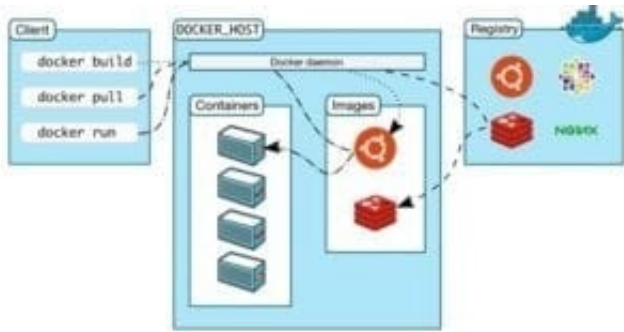
#### QUESTION 5

Annie, a cloud security engineer, uses the Docker architecture to employ a client/server model in the application she is working on. She utilizes a component that can process API requests and handle various Docker objects, such as containers, volumes, images, and networks. What is the component of the Docker architecture used by Annie in the above scenario?

- A. Docker client
- B. Docker objects
- C. Docker daemon
- D. Docker registries

Correct Answer: C

Docker uses a client-server design. The docker client talks to the docker daemon, that will the work of building, running, and distributing your docker containers. The docker client and daemon will run on the same system, otherwise you will connect a docker consumer to a remote docker daemon. The docker consumer and daemon communicate using a REST API, over OS sockets or a network interface.



The docker daemon (dockerd) listens for docker API requests and manages docker objects like pictures, containers, networks, and volumes. A daemon may communicate with other daemons to manage docker services.

[312-50V11 VCE Dumps](#)

[312-50V11 Study Guide](#)

[312-50V11 Braindumps](#)