



# 312-50V7<sup>Q&As</sup>

Ethical Hacking and Countermeasures (CEHv7)

## Pass EC-COUNCIL 312-50V7 Exam with 100% Guarantee

Free Download Real Questions & Answers **PDF** and **VCE** file from:

<https://www.geekcert.com/312-50v7.html>

100% Passing Guarantee  
100% Money Back Assurance

Following Questions and Answers are all new published by EC-COUNCIL Official Exam Center

- ⚙️ **Instant Download** After Purchase
- ⚙️ **100% Money Back** Guarantee
- ⚙️ **365 Days** Free Update
- ⚙️ **800,000+** Satisfied Customers





### QUESTION 1

How can a policy help improve an employee's security awareness?

- A. By implementing written security procedures, enabling employee security training, and promoting the benefits of security
- B. By using informal networks of communication, establishing secret passing procedures, and immediately terminating employees
- C. By sharing security secrets with employees, enabling employees to share secrets, and establishing a consultative help line
- D. By decreasing an employee's vacation time, addressing ad-hoc employment clauses, and ensuring that managers know employee strengths

Correct Answer: A

---

### QUESTION 2

A penetration tester is conducting a port scan on a specific host. The tester found several ports opened that were confusing in concluding the Operating System (OS) version installed. Considering the NMAP result below, which of the following is likely to be installed on the target machine by the OS?

Starting NMAP 5.21 at 2011-03-15 11:06 NMAP scan report for 172.16.40.65 Host is up (1.00s latency). Not shown: 993 closed ports PORT STATE SERVICE 21/tcp open ftp 23/tcp open telnet 80/tcp open http 139/tcp open netbios-ssn 515/tcp open 631/tcp open ipp 9100/tcp open MAC Address: 00:00:48:0D:EE:89

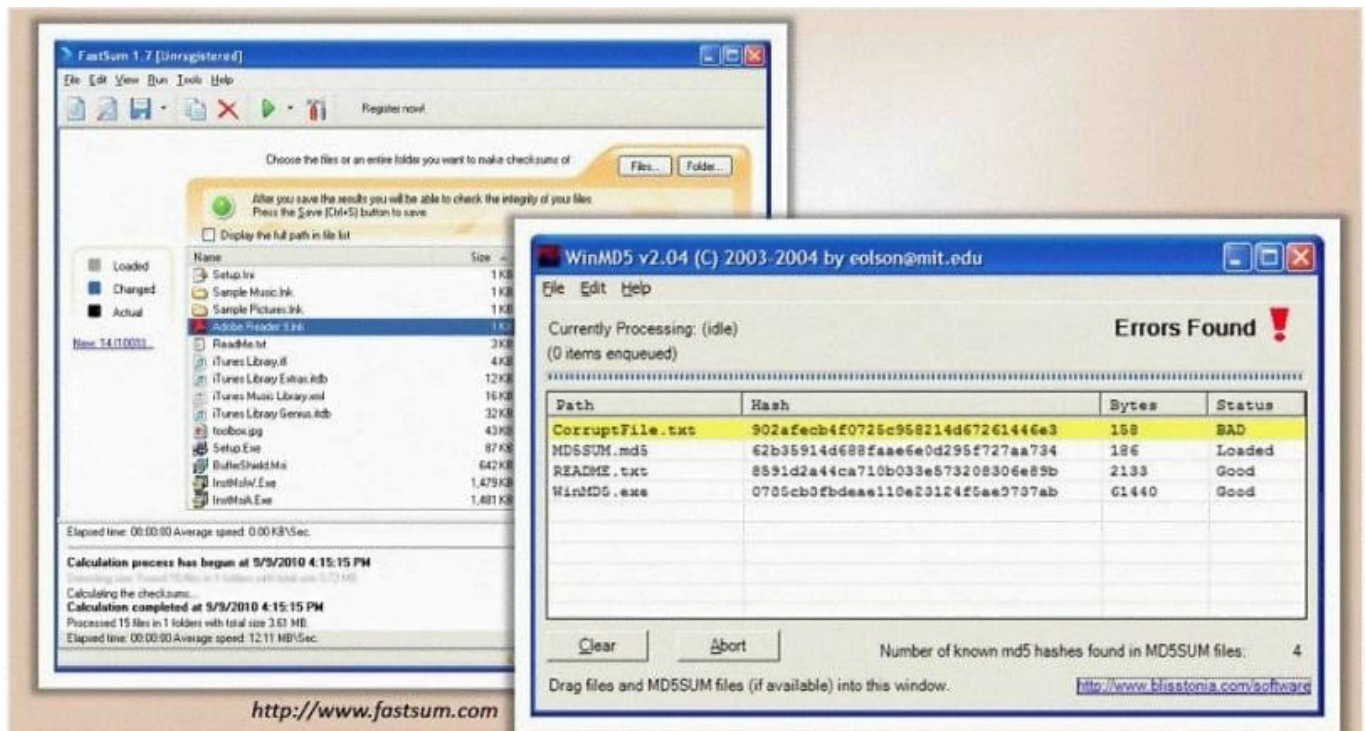
- A. The host is likely a Windows machine.
- B. The host is likely a Linux machine.
- C. The host is likely a router.
- D. The host is likely a printer.

Correct Answer: D

---

### QUESTION 3

You generate MD5 128-bit hash on all files and folders on your computer to keep a baseline check for security reasons?



What is the length of the MD5 hash?

- A. 32 character
- B. 64 byte
- C. 48 char
- D. 128 kb

Correct Answer: A

#### QUESTION 4

Which of the following programs is usually targeted at Microsoft Office products?

- A. Polymorphic virus
- B. Multipart virus
- C. Macro virus
- D. Stealth virus

Correct Answer: C

#### QUESTION 5

Stephanie works as a records clerk in a large office building in downtown Chicago. On Monday, she went to a mandatory security awareness class (Security5) put on by her company's IT department. During the class, the IT department informed all employees that everyone's Internet activity was thenceforth going to be monitored.



Stephanie is worried that her Internet activity might give her supervisor reason to write her up, or worse get her fired. Stephanie's daily work duties only consume about four hours of her time, so she usually spends the rest of the day surfing the web. Stephanie really enjoys surfing the Internet but definitely does not want to get fired for it.

What should Stephanie use so that she does not get in trouble for surfing the Internet?

- A. Stealth IE
- B. Stealth Anonymizer
- C. Stealth Firefox
- D. Cookie Disabler

Correct Answer: B

[312-50V7 PDF Dumps](#)

[312-50V7 VCE Dumps](#)

[312-50V7 Braindumps](#)