



# 350-401<sup>Q&As</sup>

Implementing and Operating Cisco Enterprise Network Core Technologies (ENCOR)

**Pass Cisco 350-401 Exam with 100% Guarantee**

Free Download Real Questions & Answers **PDF** and **VCE** file from:

<https://www.geekcert.com/350-401.html>

100% Passing Guarantee  
100% Money Back Assurance

Following Questions and Answers are all new published by Cisco  
Official Exam Center

- ⚙️ **Instant Download** After Purchase
- ⚙️ **100% Money Back** Guarantee
- ⚙️ **365 Days** Free Update
- ⚙️ **800,000+** Satisfied Customers





## QUESTION 1

An administrator is configuring NETCONF using the following XML string. What must the administrator end the request with?

```
<?xml version="1.0" encoding="UTF-8" ?>  
<rpc message-id="9.0"><notification-on/>
```

A. ]>]]>

B.

C.

D.

Correct Answer: A

<https://www.cisco.com/c/en/us/td/docs/ios-xml/ios/cns/configuration/xe-16/cns-xe-16-book/cns-netconf.html>

## QUESTION 2

### SIMULATION

#### Guidelines

This is a lab item in which tasks will be performed on virtual devices.

1.

Refer to the Tasks tab to view the tasks for this lab item.

2.

Refer to the Topology tab to access the device console(s) and perform the tasks.

3.

Console access is available for all required devices by clicking the device icon or using the tab(s) above the console window.

4.

All necessary preconfigurations have been applied.

5.

Do not change the enable password or hostname for any device.

6.



Save your configurations to NVRAM before moving to the next item.

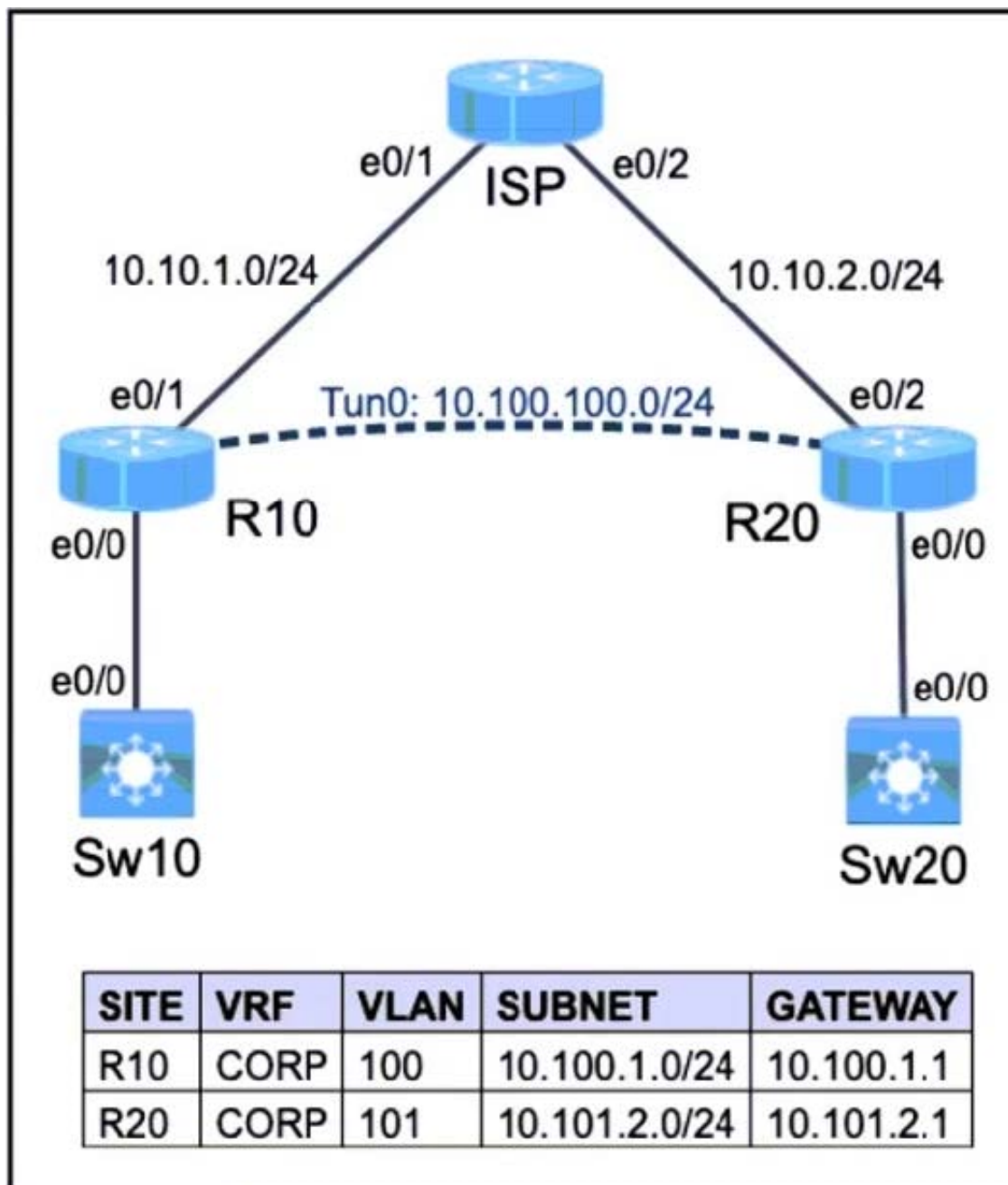
7.

Click Next at the bottom of the screen to submit this lab and move to the next question.

8.

When Next is clicked, the lab closes and cannot be reopened.

#### Topology Tasks



The operations team started configuring network devices for a new site. R10 and R20 are preconfigured with the CORP VRF. R10 has network connectivity to R20. Complete the configurations to achieve these goals:



1.

Extend the CORP VRF between R10 and R20 using Tunnel0.

2.

Protect Tunnel0 using the preconfigured profile.

R10R20ISP Sw10 Sw20

R10>

A. See the solution below in Explanation.

B. Place Holder

C. Place Holder

D. Place Holder



Correct Answer: A

Configuration on R10:

```
interface Tunnel0 ip tunnel source e0/1 ip tunnel destination 10.10.2.1 ip tunnel mode gre tunnel protection ipsec profile myprofile ip address 10.100.100.1 255.255.255.252 ip vrf forwarding CORP
```

Configuration on R20:

```
interface Tunnel0 ip tunnel source e0/1 ip tunnel destination 10.10.1.1 ip tunnel mode gre tunnel protection ipsec profile myprofile ip address 10.100.100.2 255.255.255.252 ip vrf forwarding CORP
```

---

### QUESTION 3

Refer to the exhibit.



```
CertBus-R1#sh run | begin line con  
line con 0
```

```
    exec-timeout 0 0  
    privilege level 15  
    logging synchronous  
    stopbits 1
```

```
line aux 0
```

```
    exec timeout 0 0  
    privilege level 15  
    logging synchronous  
    stopbits 1
```

```
line vty 0 4
```

```
    password 7 045802150C2E  
    login
```

```
line vty 5 15
```

```
    password 7 045802150C2E  
    login
```

```
!
```

```
end
```

```
CertBus-R1#sh run | include aaa | enable  
no aaa new-model  
CertBus-R1#
```

Which privilege level is assigned to VTY users?

- A. 1
- B. 7
- C. 13



D. 15

Correct Answer: A

Lines (CON, AUX, VTY) default to level 1 privileges.

#### QUESTION 4

Refer to the exhibit.

```
DSW2#sh spanning-tree vlan 10

VLAN0010
  Spanning tree enabled protocol rstp
    Root ID    Priority    4106
              Address     0018.7363.4300
              This bridge is the root
              Hello Time  2 sec  Max Age 20 sec  Forward Delay 15 sec

    Bridge ID  Priority    4106 (priority 4096 sys-id-ext 20)
              Address     0018.7363.4300
              Hello Time  2 sec  Max Age 20 sec  Forward Delay 15 sec
              Aging Time  300

Interface                Role Sts Cost          Prio.Nbr Type
-----
Fa1/0/7                  Desg FWD 2           128.9   P2p Peer (STP)
Fa1/0/10                  Desg FWD 4           128.12  P2p Peer (STP)
Fa1/0/11                  Desg FWD 2           128.13  P2p Peer (STP)
Fa1/0/12                  Desg FWD 2           128.14  P2p Peer (STP)
```

What is the result when a switch that is running PVST+ is added to this network?

- A. DSW2 operates in Rapid PVST+ and the new switch operates in PVST+
- B. Both switches operate in the PVST+ mode
- C. Spanning tree is disabled automatically on the network
- D. Both switches operate in the Rapid PVST+ mode.

Correct Answer: A

From the output we see DSW2 is running in RSTP mode (in fact Rapid PVST+ mode as Cisco does not support RSTP alone). When a new switch running PVST+ mode is added to the topology, they keep running the old STP instances as RSTP (in fact Rapid PVST+) is compatible with PVST+.

#### QUESTION 5



A server running Linux is providing support for virtual machines along with DNS and DHCP services for a small business. Which technology does this represent?

- A. container
- B. Type 1 hypervisor
- C. hardware pass-thru
- D. Type 2 hypervisor

Correct Answer: D

In contrast to type 1 hypervisor, a type 2 hypervisor (or hosted hypervisor) runs on top of an operating system and not the physical hardware directly. A big advantage of Type 2 hypervisors is that management console software is not required. Examples of type 2 hypervisor are VMware Workstation (which can run on Windows, Mac and Linux) or Microsoft Virtual PC (only runs on Windows).

[350-401 VCE Dumps](#)

[350-401 Practice Test](#)

[350-401 Exam Questions](#)