



350-501^{Q&As}

Implementing and Operating Cisco Service Provider Network Core Technologies (SPCOR)

Pass Cisco 350-501 Exam with 100% Guarantee

Free Download Real Questions & Answers **PDF** and **VCE** file from:

<https://www.geekcert.com/350-501.html>

100% Passing Guarantee
100% Money Back Assurance

Following Questions and Answers are all new published by Cisco
Official Exam Center

- ⚙️ **Instant Download** After Purchase
- ⚙️ **100% Money Back** Guarantee
- ⚙️ **365 Days** Free Update
- ⚙️ **800,000+** Satisfied Customers





QUESTION 1

Which two features describe TI-LFA? (Choose two.)

- A. TI-LFA uses PQ or P and Q nodes on the post-convergence path to compute the backup path.
- B. Post-convergence, TI-LFA considers the next-hop neighbor to calculate the backup repair path.
- C. TI-LFA works with point of local repair when the PQ node supports only LDP capability.
- D. Unlike RLFA, TI-LFA works without the PQ node and provides double segment failure protection.
- E. TI-LFA leverages the post-convergence path that carries data traffic after a failure.

Correct Answer: AE

QUESTION 2

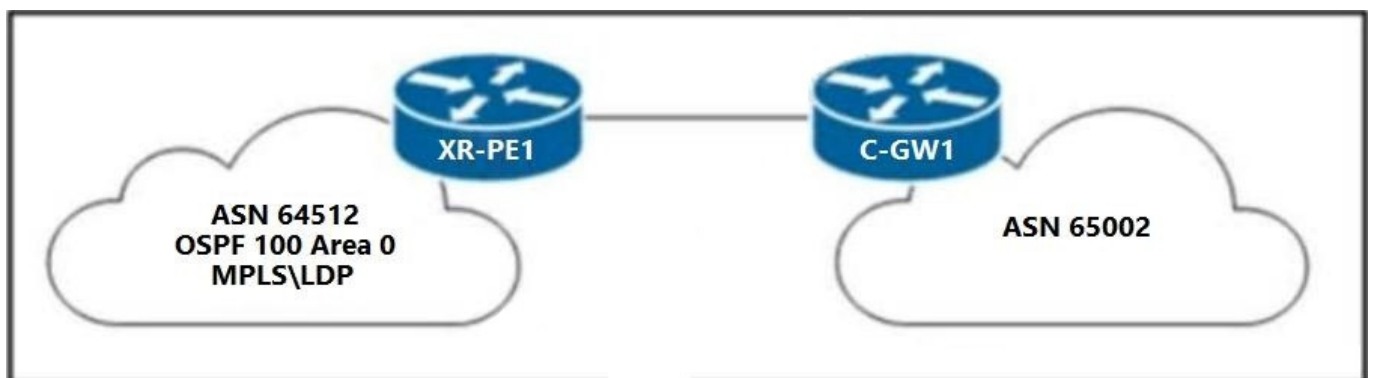
Which multicast feature listens multicast conversations maintaining a map in order to control which ports receive specific multicast traffic?

- A. Bidirectional PIM
- B. Source Specific Multicast
- C. PIM assertion
- D. IGMP snooping

Correct Answer: D

QUESTION 3

Refer to the exhibit.



A network engineer must configure XR-PE1 for uninterruptible failover from the active RP to the standby RP. Neither



peer device C-GW1 nor the core network of ASN 64512 support graceful restart extensions. Which configuration must the engineer apply to XR-PE1 to complete the task?

- A. nsr process-failures switchoverrouter ospf 100 nsf cisco
- B. router bgp 64512 nsrrouter ospf 100 nsrmppls ldp nsr
- C. nsr process-failures switchoverrouter bgp 64512 nsrrouter ospf 100 nsrmppls ldp nsr
- D. nsr process-failures switchoverrouter ospf 100 nsf letf

Correct Answer: C

QUESTION 4

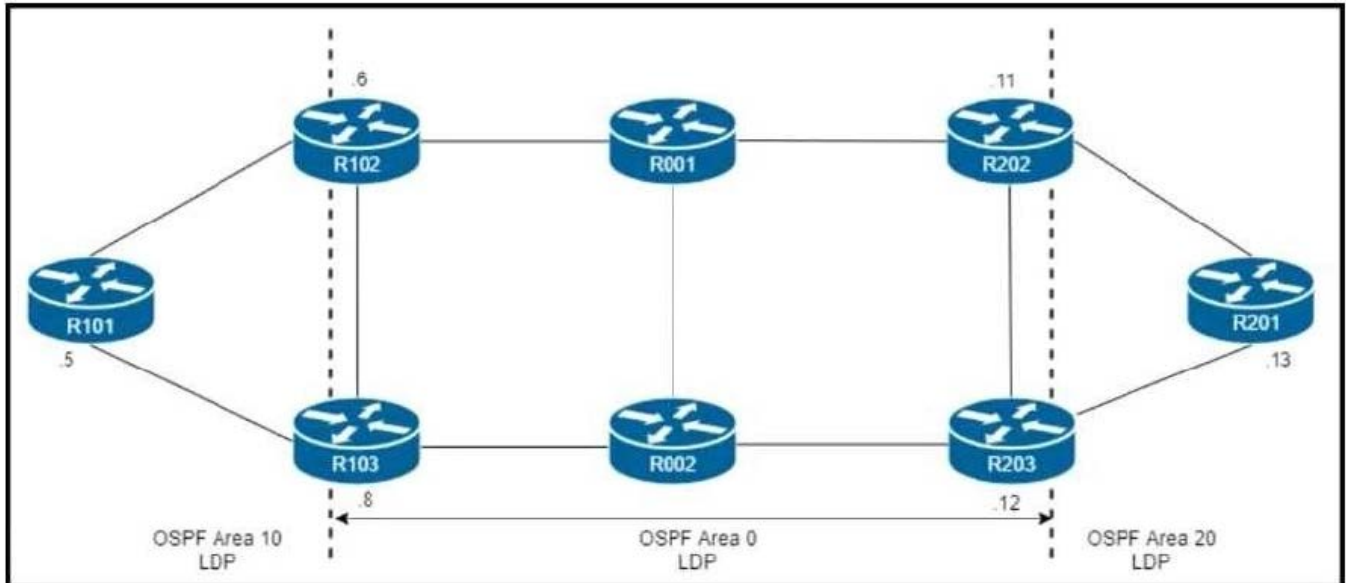
What is the role of NFVI?

- A. domain name service
- B. intrusion detection
- C. monitor
- D. network address translation

Correct Answer: C

QUESTION 5

Refer to the exhibit.



R101 is peering with R102 and R103, and R201 is peering with R202 and R203 using iBGP Labeled Unicast address families. The OSPF area 0 border routers are in a full iBGP Labeled Unicast mesh, and VPNv4 routes are exchanged directly between PE routers R101 and R201 through iBGP

Which address family-level configuration must be applied on ABR R102 on ABR R102 to support a Unified MPLS routing architecture with partitioned IGP domains?



- A. **router bgp 65512**
address-family ipv4
neighbor 172.16.0.5 route-reflector-client
neighbor 172.16.0.5 send-label
neighbor 172.16.0.11 route-reflector-client
neighbor 172.16.0.11 send-label
neighbor 172.16.0.12 route-reflector-client
- B. **router bgp 65512**
address-family ipv4
neighbor 172.16.0.5 route-reflector-client
neighbor 172.16.0.5 next-hop-self all
neighbor 172.16.0.5 send-label
neighbor 172.16.0.11 next-hop-self all
neighbor 172.16.0.11 send-label
neighbor 172.16.0.12 next-hop-self all
neighbor 172.16.0.12 send-label
- C. **router bgp 65512**
address-family ipv4
neighbor 172.16.0.5 route-reflector-client
neighbor 172.16.0.5 next-hop-self all
neighbor 172.16.0.11 next-hop-self all
neighbor 172.16.0.12 next-hop-self all
- D. **router bgp 65512**
address-family ipv4
neighbor 172.16.0.5 route-reflector-client
neighbor 172.16.0.5 next-hop-self
neighbor 172.16.0.5 send-label
neighbor 172.16.0.11 next-hop-self
neighbor 172.16.0.11 send-label
neighbor 172.16.0.12 next-hop-self
neighbor 172.16.0.12 send-label

A. Option A

B. Option B

C. Option C

D. Option D

Correct Answer: B